

## Steeda Ultra Light and Low Profile BOLT-IN Chassis Jacking Rails for 2012+ Focus ST/ 2016+ Focus RS

Installation Instructions for  
Part #: 555-5208

### Steeda Jacking Rail Installation

1. Support the car on a drive on lift, two post lift, or jack stands to do this install.
2. Remove the plastic covers shown in Figure 1 located in the rear of the vehicle by removing the 3 bolts indicated.
3. Remove the underside panels by removing the bolts, panel screws, and panel nuts shown in Figure 2.  
**NOTE:** Panel nuts can be removed with a flat head screw driver by unscrewing them. Panel screws can be removed with a flat head screw driver as well by prying the pieces apart.
4. Using a 15mm socket and ratchet remove the 4 bolts (2 on each side) securing the cross brace located behind the engine, in Figure 3.
5. Feed the long end of the offset stud into the slotted hole on the driver side shown in Figure 4.

**NOTES:**

- The offset stud needs to grip both sides of the chassis evenly in order to secure the attached bracket.
- Hole is **NOT** slotted on passenger side. If necessary, use the auxiliary hole to feed the stud into position.

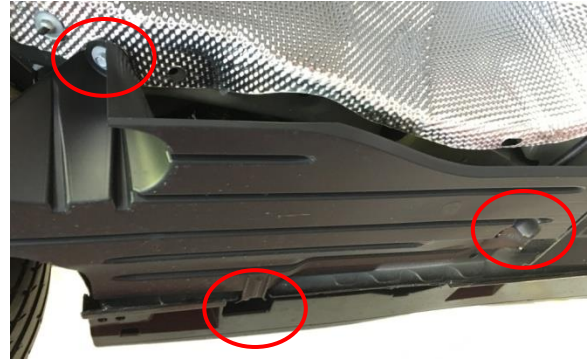


Figure 1: Rear plastic cover hardware



Figure 2: Underside panel hardware



Figure 3: Cross brace bolts

6. Mount the Steeda jacking rail front bracket by sliding the bracket under the cross brace and having the threaded portion of the offset stud fall through the outside hole, as shown in Figure 5, and loosely tighten the front bracket hardware enough to hold it in place.  
**NOTE:** If you would like to reuse the factory underside panels removed in step 3, please continue with step 7. Otherwise, skip to step 8.

7. Slide the underside panel between the jacking rail and the chassis and fix the rear of it by pressing on the panel nut indicated in Figure 6.

8. Feed the flag nut through the large hole towards the rear of the vehicle. Feed the bolt through the rear bracket and loosely tighten the rear bracket hardware enough to hold it in place.

9. Tighten all of the supplied bolts starting in the front and ending in the rear.

**NOTES:**

- Tighten the bolts evenly front to back to ensure proper fitment.
- If the underside panels are being reused, finish securing them with the hardware that was removed in step 3.

10. Repeat Steps 5 - 9 for the passenger side.

**NOTES**

- Steeda chassis jacking rail powder coating is only designed to withstand vehicle jacks with padded rubber jacking plates. Surface damage can be caused by using jacks without these rubber pads.
- Sometimes the factory seam sealer will prevent the rails from sitting flat. Simply scrape it off for better fitment and repaint body surfaces.



Figure 4: Slotted and auxiliary hole for offset stud



Figure 5: Steeda jacking rail front bracket



Figure 6: Underside panel mounting

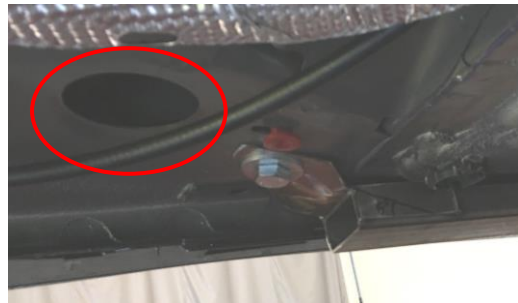


Figure 7: Steeda jacking rail rear bracket

