

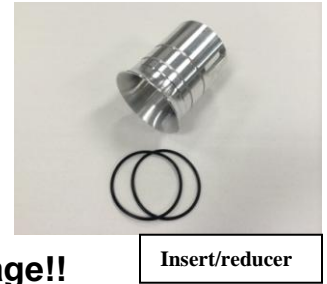
# STEEDA COLD AIR INDUCTION KIT

## 2005-2009 4.6L Mustangs GT

Instructions for part # 555-3198

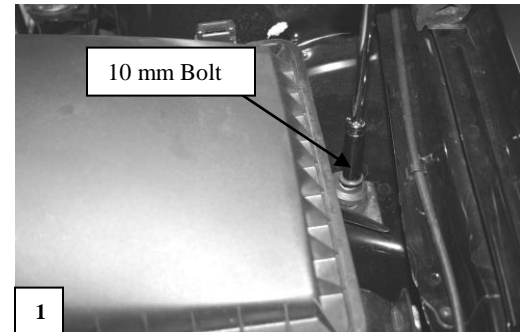
**\*Note:** This Cold Air Kit comes with a mass air meter insert/reducer. With the reducer installed, this kit is designed for use with the factory computer tune.

**Failure to install the reducer will cause engine damage!!**  
**Reducer can be removed, Only if an aftermarket Tune is installed.**



### Removal of factory air filter assembly

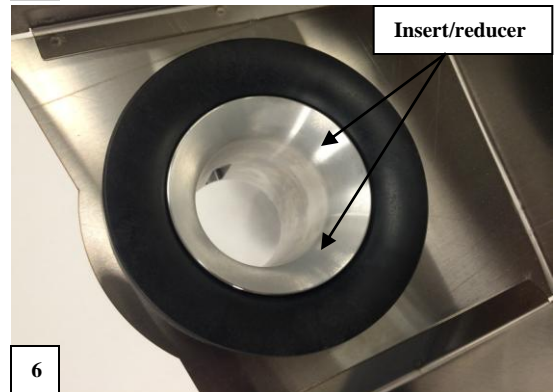
1. Disconnect the mass air meter wiring harness by depressing the red tab and pulling away the plug from the meter.
2. Remove the bolt that holds the air filter assembly to the inner fender . **Figure 1**
3. Loosen the hose clamp that attaches the factory flexible intake tube to the meter. **Figure 2**
4. Remove the factory air filter box assembly.
5. The mass air meter sensor is attached to the factory air filter box cover and must be removed for re-use in the new Steeda meter. Using a 20T Torx wrench, remove the factory mass air meter sensor from the air filter cover assembly and set aside. **Figure 3**
6. Remove the two rubber grommets on the bottom side of the air filter assembly mounting studs. Reinstall them into the inner fender holes. **Figure 4**



### Installation of the Steeda Cold Air Induction Kit

7. To assemble the new Steeda cold air kit you must attach the Steeda billet meter to the provided shield and air guide by passing the 1/4" bolts through the meter flange bolts holes, through the provided gasket, through the shield and screwing them into the mounting holes of the air guide. Take care to insure the air guide, meter and shield are all indexed so the air passages all match. **Figure 5**

8. Now install the mass air reducer/restrictor from the velocity stack end. Make sure to apply some grease to the rubber o-rings, this will aid in removing it later on if a tune is added. Make sure to orientate it properly so the sensor slot lines up. **Figure 6&7**
9. Insert the mass air meter sensor (removed in Step 5) into the Steeda billet aluminum meter and reducer using a 20T Torx wrench. Take care to install the sensor with the exposed metering wires facing the incoming air flow (toward the air filter).
10. Fit the edge molding onto the new shield. Difficult corners may require the use of a rubber mallet to get the trim all the way down. If the trim is loose it can be tightened by squeezing it lightly with pliers. **Figure 5**
11. Install the Steeda cold air assembly into the factory location by inserting the studs on the underside of the Steeda shield into the grommets installed in Step 6. Make sure the studs on the bottom side of the shield pass through the factory rubber grommets, with the shield completely seated. Relocate any wires that will prevent the cold air shield from completely seating in the grommets.
12. Re-install the factory flexible intake tube and tighten the hose clamp.
13. Reinstall the wiring harness to the mass air meter sensor. Re-check all clamps, bolts and the connector before starting your engine. **Figure 7**



*Thank you for choosing **STEEDA**. Any questions and/or comments on these instructions please contact us at (954) 960-0774 or e-mail us at [gofast@steeda.com](mailto:gofast@steeda.com)*

# Supplemental Instructions for STEEDA COLD AIR INDUCTION KIT

## 2005 4.6L Mustangs GT

Instructions for part # 555-3120

**This step should be done after the removal of the stock air box!**

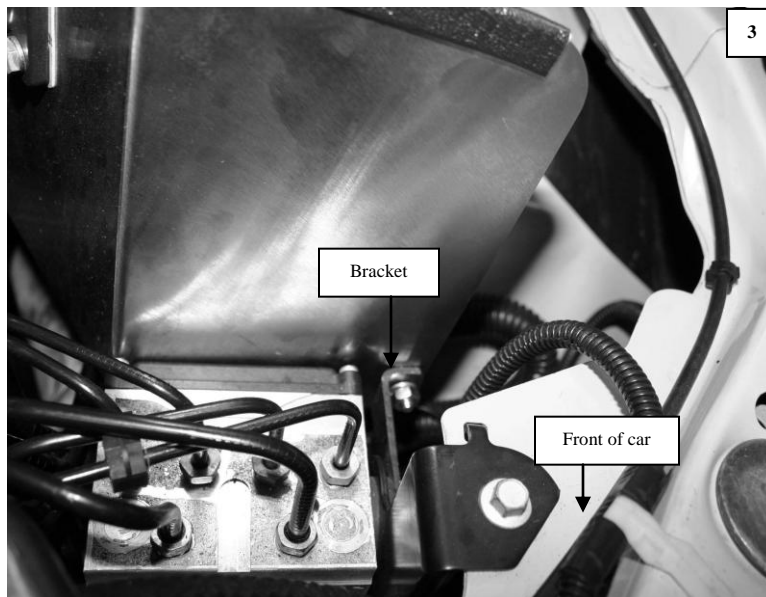
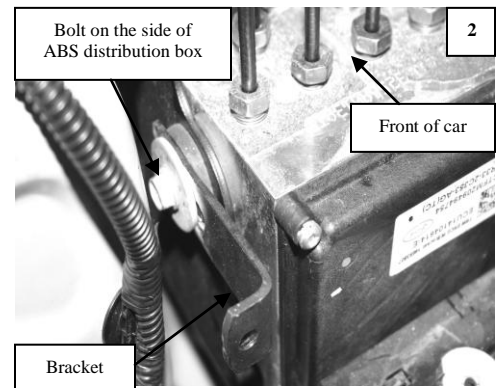
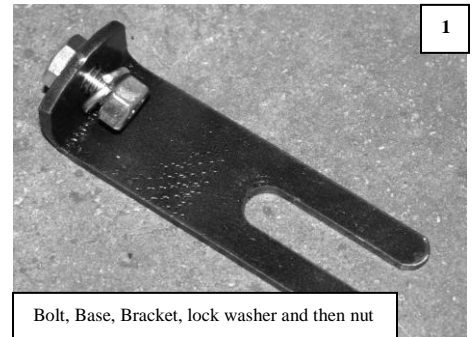
The new supplied bracket for our cold air kit is designed to add another attachment point for the base. It's made from 303 stainless steel with all stainless hardware.

1. Align bracket as shown in pic 1, with the bolt, bracket, lock washer and nut. The heat shield will go between the bolt head and bracket body.

2. Loosen the bolt on the drivers side of the ABS distribution box. Slide the fork end of the bracket between the bolt head and the rubber washer, pic # 2. Leave the bolt loose for now.

3. Once the Cold air box is installed you need to line up the hole in the heat shield with the hole in the mounting bracket. Attach with the

supplied hardware as stated in step 1. Final installation should look like pic 3. Tighten the bolt on the side of the ABS box and you are done!



*Thank you for choosing **STEEDA**. Any questions and/or comments on these instructions please contact us at (954) 960-0774 or e-mail us at [gofast@steeda.com](mailto:gofast@steeda.com)*

Warning: Not approved for sale in California or states that require a California E.O. #. This part has been designed and is intended for off-road application only. Installation of this part on a vehicle that is driven on public roads may violate U.S. and Canadian laws and regulations.

Note: Federal and several state and provincial laws prohibit the removal, modification or rendering inoperative of any part that affects emissions or safety on motor vehicles used on public streets or highways. Steeda Autosports assumes no liability for any violations arising out of any federal, state or provincial emissions or safety requirements on motor vehicles arising out of the customer's modifications and/or use of Steeda products. It is the responsibility of the customer to determine if their modified vehicle complies with applicable laws.

This limited warranty is the only express warranty applicable to Steeda Autosports products. Other rights may arise or vary from state to state in the United States. Steeda is not responsible for any time for which you may lose the use of your vehicle, any inconvenience you might be caused, the loss of your transportation or any part thereof, or any other incidental or consequential damages you may have.