



PedalBox

Anleitung // Manual



» Content

Overview	15
Scope of delivery	16
General information	17
Installation & Getting started	18
Individual tuning with PerfecTune	19
Programs & Settings	20
Troubleshooting	22
Safety instructions	23
Warranty	24
Disclaimer	25
Manufacturer's declaration	26



» Overview

- 1 Program button
- 2 Plus button
- 3 Status display
- 4 Minus button
- 5 Adapter cable



» Scope of delivery

- 1 PedalBox+
- 2 Manual
- 3 PedalBox+ Mount
- 4 Adhesive pads



» General information

Information about the product

The PedalBox⁺ changes the characteristics of the throttle pedal. By configuring the settings, an optimal customization to the vehicle-specific properties can be achieved. This adjustment compensates production-related series variances.

Objective of this manual

This manual is a brief introduction to the functions and benefits of the PedalBox⁺. Review this manual before installing and using PedalBox⁺. We recommend the installation in a professional workshop.

The PedalBox⁺ has been carefully designed and rigorously tested. By following the instructions and advice in this manual you will avoid incorrect fitment and ensure maximum enjoyment without running the risk of voiding the warranty.

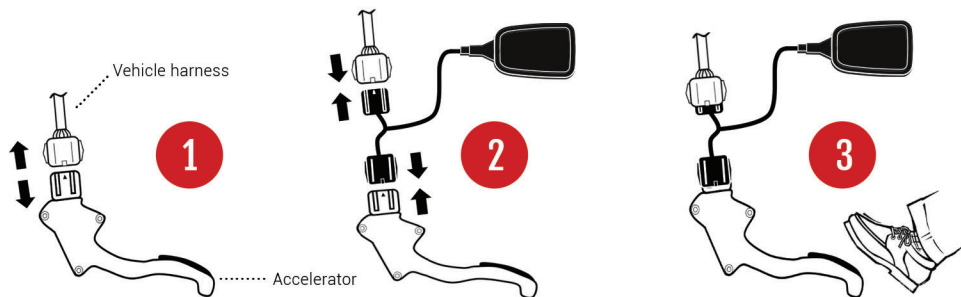
Note: Use the PedalBox⁺ only for the defined vehicle. Never install or remove the PedalBox⁺ system with the key inserted in the ignition or the ignition system active. Always switch off the ignition and wait 5 minutes for all electrical systems to power down and fully discharge.

On most vehicles the connection for the PedalBox⁺ is close to the accelerator pedal or the steering column. You must ensure that the PedalBox⁺ and the associated wiring loom do not interfere with the operation of the pedal or the steering and are secured at all times. Do not modify the PedalBox⁺ or wiring loom in any way. Any modifications will result in voiding of the warranty.



Please read the safety instructions on page 10.

» Installation & Getting started



Never install or remove the PedalBox+ system with the key inserted in the ignition or the ignition system active. Always switch off the ignition and wait 5 minutes for all electrical systems to power down and fully discharge.

- 1 Disconnect the accelerator from the vehicle harness.
- 2 Connect the plugs of the PedalBox+ to the two original accelerator pedal connectors.
- 3 Attach the PedalBox+ mount with the adhesive pads and make sure that the PedalBox+ is securely placed in the mount. **The PedalBox+ is now ready for the individual tuning with PerfecTune.**



Please read the safety instructions on page 10.

» Individual tuning with PerfectTune

How you perfectly match your PedalBox⁺ to your vehicle



Turn on the ignition. The engine does not need to run. If so, make sure your vehicle is idling.



Press and hold the **plus and minus buttons for at least 3 seconds**. The status display shows all **red and green bars**. PerfectTune is now ready to be customized to your accelerator pedal, the **program button is blinking in white**.



Slowly press the accelerator pedal from the neutral position to the full throttle position. For automatic gearshifts you may need to overcome a slight resistance (kick-down). Release the accelerator pedal back into the neutral position. You can measure the pedal path several times by pressing the accelerator, **the status display shows you the accelerator pedal position**.



To complete PerfectTune, press the **blinking program button for 3 seconds**. The PedalBox⁺ confirms the successful operation with a new **flashing and a green program button**. All programs are now perfectly matched to your accelerator pedal.

» Programs & Settings

Program selection



CITY

Program LED lights up green



SPORT

Program LED lights up orange



SPORT+

Program LED lights up red



STOCK

Program LED lights up white

Fine adjustment



Increase with the plus button

LED status bar lights up red, up to 3 times



Decrease with the minus button

LED status bar lights up green, up to 3 times



Example: PedalBox+ with program SPORT. The response is increased by two.

» Programs & Settings

The PedalBox+ starts with the last selected setting. The factory setting is program CITY. With the Program button you can choose between four presets.

Change programs

Press the program button to switch between four preset programs [CITY, SPORT, SPORT+ and STOCK]. To fine-tune the selected program, use the plus or minus button.

Overview of the programs

The **CITY** mode is perfectly designed for stop-and-go in urban traffic. It ensures an improved low-speed range with a response programmed for economic consumption.

The **SPORT** mode increases the throttle acceleration already clearly and is suitable for most driving situations. The engine reacts more spontaneously. A real plus of dynamism, which the driver feels especially when overtaking.

The **SPORT+** mode has an optimized throttle response throughout the complete speed range. The response is designed for fast acceleration.

The **STOCK** mode sets the vehicle in default setting.

Turn off

Press and hold the program button until the PedalBox+ LEDs go out. Your last settings will be saved automatically. Press any key to return to the previously saved setting.



Please read the safety instructions on page 10.

Error Descriptions

Solutions

The LED does not light up.

Checked all connected components? Is the PedalBox⁺ switched on? Turn on ignition or start the car, problem solved?
None of the above. Contact our customer support.

The car doesn't run smoothly.

Check all connected components.
Are the connectors in the right position?
Are the LED's lit? Have you changed the program?

The EML light is shown or the vehicle goes into LIMP mode.

Reduce the settings using the minus button.
Try an alternate program.
Contact customer support.

Engine light shows up.

Reduce the program by pressing the minus button.

There is no noticeable increase in performance.

Increase the setting using the plus button.
Try a different program.

How do I return to default throttle setting?

The STOCK mode sets the vehicle to default setting.
Turn off the ignition when removing the PedalBox⁺. Wait until all electrical consumers are switched off. Remove the PedalBox⁺ and reconnect the accelerator with the original plug.

» Safety instructions

Please read through the following information



We recommend the **installation by a car specialist**.

Never install or remove the PedalBox+ system with the key in the ignition or the ignition system active. **Always switch off the ignition and wait 5 minutes** for all electrical systems to power down and fully discharge.



Make sure that all cables are laid so that they cannot influence the operation of the pedals. **Fasten the cable under the cover, if necessary also use cable ties**.



Change the PedalBox+ settings while your car is stationary. By carefully pressing the accelerator pedal you get a feel for the sensitivity of the accelerator pedal.

Most vehicles have a different acceleration and accelerator behavior. Therefore, be careful and always **set the configuration of the PedalBox+ only in small steps** (+1 or -1).

Never start the PerfectTune configuration while driving.



Always **pay attention to road traffic**.

If you have questions regarding installation and safety, please **contact your authorized dealer** immediately.

» Warranty

The manufacturer's warranty of DTE Systems GmbH for customers is limited to customer's who have purchased the product from an official DTE dealer. End customers can receive warranty services at DTE Systems in Germany. These voluntary manufacturer's warranty services extend the legal rights according to applicable laws. Applicable national laws will not be affected by that.

While requesting warranty claims according to this warranty, the end customer is required to provide an original proof of purchase (i.e. the original invoice for the first purchase of the product by an end customer).

The warranty period is, if not otherwise stated in sales material, 2 years as of shipment.

The warranty is limited to proven material or production errors. Excluded are components that are affected by normal tear and wear. Furthermore, damages or errors due to improper usage, application outside the product specifications, negligence, manipulation, accidents, abnormal usage environments or improper installation are excluded, as well as consequential or incidental damages of any matter. The product has to be returned to

DTE Systems GmbH
Maria-von-Linden-Straße 23
45665 Recklinghausen
Germany

within 2 weeks after the error occurred, including a complete description of the error and the vehicle installation to allow for further investigation. Should the product not be sent within the stated period of time, the warranty is void.

» Disclaimer

For customers outside EU

Read carefully before installing the PedalBox*. Remember this is a high performance product. Use at your own risk. For off road, racing on private premises and demo use only. Please check your national traffic legislation prior usage. Do not use this product until you have carefully read the following agreement. This agreement sets forth the terms and conditions for the use of the PedalBox*. The installation of this product indicates that the buyer has read and fully understands this agreement and accepts its terms and conditions.

Disclaimer of Liability

PedalBox* Manufacturer, its distributors or dealers shall in no way be responsible for the product's improper use and service. The buyer of this system hereby waives all liability claims. The buyer acknowledges that he is not relying on the seller's skill or judgment to select or furnish goods suitable for any particular purpose and that there are no liabilities which extend beyond the description on the face hereof, and the buyer hereby waives all remedies or liabilities, expressed or implied arising by law or otherwise, (including without obligations of the seller with respect fitness, merchantability and consequential damages) or whether or not occasioned by the seller's negligence. The seller disclaims any warranty and expressly disclaims any liability for personal injury or damages. The buyer acknowledges and agrees that the disclaimer of any liability for personal injury is a material term for this agreement and the buyer agrees to indemnify the seller and to hold the seller harmless from any claim related to the item of the equipment purchased. Under no circumstances will the seller be liable for any damages or expenses by reason of use or sales of any such equipment. The seller assumes no liability regarding the improper installation or misapplication of its products. It is the installer's responsibility to check for proper installation and if in doubt the manufacturer is to be contacted.

Manufacturer's Declaration

Within the context of this documentation, a Declaration of Conformity is a declaration that the electrical equipment placed on the market complies with all applicable essential safety requirements.

With the Declaration of Conformity provided in this section, we declare that the product complies with the applicable essential safety requirements from the directives and standards.



What does the CE- and ECE- mark signify?

- a) CE-marking and ECE type approval certifies the conformity with all obligations that need to be met by the manufacturer in relation to the product on community directives containing provisions relating to CE and ECE marking.
- b) The CE and ECE mark applied to industrial products signifies that the natural or legal person who applies the mark or has the mark applied, has ensured that the product meets all Community directives on complete harmonization and has been subjected to all the conformity assessment procedures demanded by the regulations.

Directive on Waste Electrical and Electronic Equipment (WEEE)

Electrical and electronic equipment (EEE) contains materials, components and substances that could be dangerous or detrimental to human health and the environment if waste electrical and electronic equipment (WEEE) is not disposed of correctly.



Made in Germany

PedalBox® ist ein Qualitätsprodukt von
PedalBox® is a quality product by

DTE Systems GmbH
Maria-von-Linden-Straße 23
45665 Recklinghausen

PedalBox/PedalBox-Logo sind eingetragene
Marken von DTE Systems GmbH, Deutschland.
Alle Rechte vorbehalten.

PedalBox/PedalBox-Logo are registered trade-
marks of DTE Systems GmbH, Germany.
All rights reserved.