

CRAWLTEK

REVOLUTION

491 W. GARFIELD AVE., COLDWATER, MI 49036 • 517.278.1039
CRAWLTEKREVOLUTION.COM • E-MAIL: SALES-CRAWLTEK@RIDEFOX.COM

INSTALLATION INSTRUCTIONS

BLAZE REAR BUMPER

CWLFB22101A, CWLFB22101B - w/o sensors, w/o light cutouts
CWLFB22101A, CWLFB22141B - With sensors, w/o light cutouts
CWLFB22101A, CWLFB22131B - With sensors, With light cutouts

FOR USE WITH ALL FORD BRONCO 2020-2022



PLEASE READ THROUGH INSTRUCTIONS BEFORE INSTALLING

2024-12-04

WHAT'S IN THE BOX?

PLEASE VERIFY KIT CONTENTS BEFORE BEGINNING INSTALLATION

CWLFB22101		2020-22 FORD BRONCO BLAZE REAR BUMPER- W/O SENSORS W/O LIGHTS
CWLFB22101A	1	BUMPER: REAR BLAZE (BOX 1 OF 2)
06281	2	REAR BLAZE SPARE TIRE CARRIER CENTER SUPPORT BRACKET
06289	1	VENT: BRONCO BLAZE REAR CENTER UPPER PLATE
06291	2	VENT: BRONCO BLAZE REAR UPPER WING CAP PLATE
06288	1	VENT: BRONCO ST BLAZE R BUMPER: LOWER CENTER VENT W/O RLC
06287	1	VENT: BRONCO ST BLAZE R BUMPER: RLC TRIM RING UPGRADE
C0047	1	VENT HARDWARE PACK
	50	1/4"-20 X 5/8" BHSCS 18-8 STAINLESS - BLACK OXIDE COATED
	50	1/4"-20 FLANGE NUT 18-8 STAINLESS STEEL
C0053	1	MAIN HARDWARE PACK
	2	1/2"-13 X 1-1/4" SHCS - CLEAR ZINC
	8	1/2"-13 X 1-1/4" BHSCS - STAINLESS STEEL - BLACK OXIDE COATED
	2	1/2"-13 X 1-1/4" BOLT - GRADE 8 - YELLOW ZINC
	2	1/2" SAE THRU HARDENED WASHER - YELLOW ZINC
	12	1/2"-13 FLANGED NYLOCK NUT - CLEAR ZINC
	6	3/8" 0.281 HOLE TUBE CLAMP - FASTENAL # 0708759
	2	1/4"-20 PANEL NUT EQUIV TO MCMMASTER 94850A129
C0066	1	HITCH MOUNT HARDWARE PACK
	4	12MM-1.75 X 100MM FLANGE HEAD HEX BOLT, CLASS 10.9, CLEAR ZINC
	4	12MM-1.75 FLANGE NYLOCK NUT, CLEAR ZINC
CWLFB22101B	1	BUMPER: REAR BLAZE W/O SENSOR W/O LIGHTS (BOX 2 OF 2)
06294	1	VENT: BRONCO ST BLAZE R BUMPER: W/O SENSOR W/O LIGHTS - DS
06295	1	VENT: BRONCO ST BLAZE R BUMPER: W/O SENSOR W/O LIGHTS - PS
06272	2	BILLET SENSOR PLUG
06274	2	SENSOR BACKING BRACKET - 0.188 PLATE W/ HOLE
C0050	1	BOLT PACK - SENSOR PLUG
	8	#10-24 X 1/2" PAN HEAD PHILLIPS SCREW - STAINLESS STEEL
CWLFB22141		2020-22 FORD BRONCO BLAZE REAR BUMPER- WITH SENSORS W/O LIGHTS
CWLFB22101A	1	BUMPER: REAR BLAZE (BOX 1 OF 2)
06281	2	REAR BLAZE SPARE TIRE CARRIER CENTER SUPPORT BRACKET
06289	1	VENT: BRONCO BLAZE REAR CENTER UPPER PLATE
06291	2	VENT: BRONCO BLAZE REAR UPPER WING CAP PLATE
06288	1	VENT: BRONCO ST BLAZE R BUMPER: LOWER CENTER VENT W/O RLC
06287	1	VENT: BRONCO ST BLAZE R BUMPER: RLC TRIM RING UPGRADE
C0047	1	VENT HARDWARE PACK
	50	1/4"-20 X 5/8" BHSCS 18-8 STAINLESS - BLACK OXIDE COATED
	50	1/4"-20 FLANGE NUT 18-8 STAINLESS STEEL
C0053	1	MAIN HARDWARE PACK



	2	1/2"-13 X 1-1/4" SHCS - CLEAR ZINC
	8	1/2"-13 X 1-1/4" BHSCS - STAINLESS STEEL - BLACK OXIDE COATED
	2	1/2"-13 X 1-1/4" BOLT - GRADE 8 - YELLOW ZINC
	2	1/2" SAE THRU HARDENED WASHER - YELLOW ZINC
	12	1/2"-13 FLANGED NYLOCK NUT - CLEAR ZINC
	6	3/8" 0.281 HOLE TUBE CLAMP - FASTENAL # 0708759
	2	1/4"-20 PANEL NUT EQUIV TO MCMASTER 94850A129
C0066	1	HITCH MOUNT HARDWARE PACK
	4	12MM-1.75 X 100MM FLANGE HEAD HEX BOLT, CLASS 10.9, CLEAR ZINC
	4	12MM-1.75 FLANGE NYLOCK NUT, CLEAR ZINC
CWLFB22141B	1	BUMPER: REAR BLAZE WITH SENSOR W/O LIGHTS (BOX 2 OF 2)
06296	1	VENT: BRONCO ST BLAZE R BUMPER: W/ SENSOR W/O LIGHTS - DS
06297	1	VENT: BRONCO ST BLAZE R BUMPER: W/ SENSOR W/O LIGHTS - PS
06271	4	BILLET SENSOR HOLDER
06273	2	SENSOR BACKING BRACKET - 0.090 PLATE
06274	2	SENSOR BACKING BRACKET - 0.188 PLATE W/ HOLE
C0050	1	BOLT PACK - SENSOR HARDWARE
	8	#10-24 X 1/2" PAN HEAD PHILLIPS SCREW - STAINLESS STEEL
CWLFB22131		2020-22 FORD BRONCO BLAZE REAR BUMPER- WITH SENSORS WITH LIGHTS
CWLFB22101A	1	BUMPER: REAR BLAZE (BOX 1 OF 2)
06281	2	REAR BLAZE SPARE TIRE CARRIER CENTER SUPPORT BRACKET
06289	1	VENT: BRONCO BLAZE REAR CENTER UPPER PLATE
06291	2	VENT: BRONCO BLAZE REAR UPPER WING CAP PLATE
06288	1	VENT: BRONCO ST BLAZE R BUMPER: LOWER CENTER VENT W/O RLC
06287	1	VENT: BRONCO ST BLAZE R BUMPER: RLC TRIM RING UPGRADE
C0047	1	VENT HARDWARE PACK
	50	1/4"-20 X 5/8" BHSCS 18-8 STAINLESS - BLACK OXIDE COATED
	50	1/4"-20 FLANGE NUT 18-8 STAINLESS STEEL
C0053	1	MAIN HARDWARE PACK
	2	1/2"-13 X 1-1/4" SHCS - CLEAR ZINC
	8	1/2"-13 X 1-1/4" BHSCS - STAINLESS STEEL - BLACK OXIDE COATED
	2	1/2"-13 X 1-1/4" BOLT - GRADE 8 - YELLOW ZINC
	2	1/2" SAE THRU HARDENED WASHER - YELLOW ZINC
	12	1/2"-13 FLANGED NYLOCK NUT - CLEAR ZINC
	6	3/8" 0.281 HOLE TUBE CLAMP - FASTENAL # 0708759
	2	1/4"-20 PANEL NUT EQUIV TO MCMASTER 94850A129
C0066	1	HITCH MOUNT HARDWARE PACK
	4	12MM-1.75 X 100MM FLANGE HEAD HEX BOLT, CLASS 10.9, CLEAR ZINC
	4	12MM-1.75 FLANGE NYLOCK NUT, CLEAR ZINC
CWLFB22131B	1	BUMPER: REAR BLAZE WITH SENSOR WITH LIGHTS (BOX 2 OF 2)
06298	1	VENT: BRONCO ST BLAZE R BUMPER: W/ SENSOR W/ LIGHTS - DS
06299	1	VENT: BRONCO ST BLAZE R BUMPER: W/ SENSOR W/ LIGHTS - PS



06308	2	BRONCO REAR LIGHT MOUNTING BRACKETS
06271	4	BILLET SENSOR HOLDER
06273	2	SENSOR BACKING BRACKET - 0.090 PLATE
06274	2	SENSOR BACKING BRACKET - 0.188 PLATE W/ HOLE
C0050	1	BOLT PACK - SENSOR HARDWARE
	8	#10-24 X 1/2" PAN HEAD PHILLIPS SCREW - STAINLESS STEEL
06262	4	ALUMINUM SPACERS FOR LIGHTS



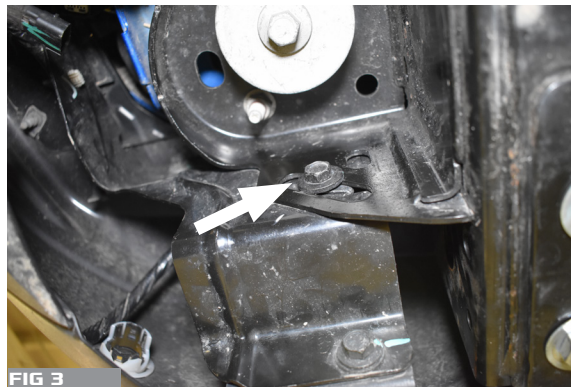
NOTE: THIS BUMPER INSTALLATION WILL ELIMINATE THE ORIGINAL LICENSE PLATE MOUNT. AN AFTERMARKET RELOCATION KIT WILL BE REQUIRED, BUT IS NOT INCLUDED.

FACTORY BUMPER REMOVAL

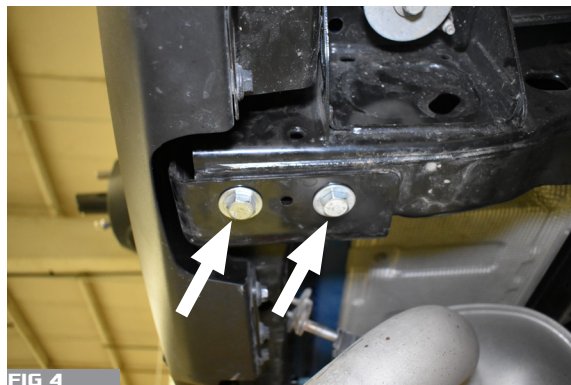
1. UNPLUG WIRING HARNESS FROM BOTH DRIVER AND PASSENGER SIDE OF THE BUMPER FIG. 1 & 2



2. REMOVE 2 BOLTS, 1 ON EACH SIDE. FIG.3



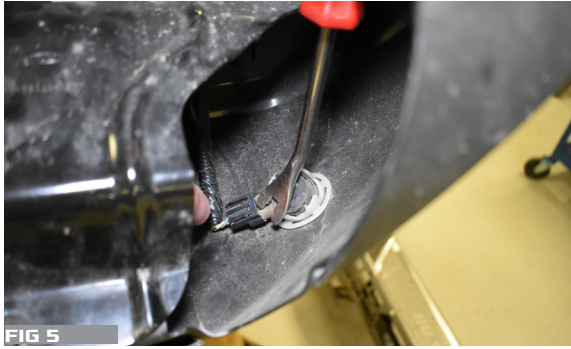
3. REMOVE 4 BOLTS, 2 ON EACH SIDE. FIG.4



4. REMOVE FACTORY BUMPER FROM VEHICLE.



5. IF EQUIPPED, UNPLUG 4 SENSORS FROM THE BUMPER FIG. 5 REMOVE SENSORS BY PRESSING OUT ON TABS. FIG. 6



6. UNPLUG LICENSE PLATE LIGHT. FIG. 7



7. REMOVE THE 14 WIRE HARNESS RETAINING CLIPS TO ALLOW FOR WIRE HARNESS REMOVAL. FIG. 8,9



ASSEMBLY OF NEW BUMPER

1. INSTALL 2 VENT GRILLS ON BOTH ENDS ON THE BUMPER USING THE 8 PROVIDED BOLTS AND NUTS. FIG. 10



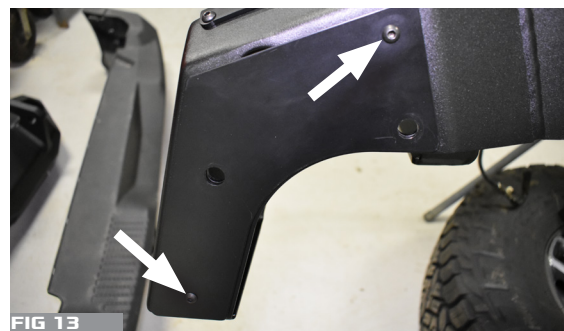
2. INSTALL THE LONG BUMPER TRIM PLATE TO THE FRONT OF THE BUMPER USING THE PROVIDED 18 BOLTS AND NUTS. DO NOT TIGHTEN UNTIL ALL HARDWARE IS INSTALLED. FIG. 11



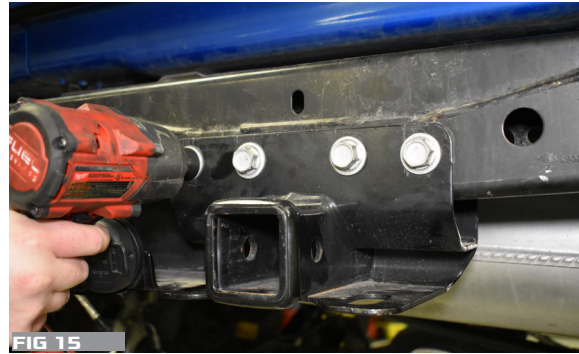
3. INSTALL THE SHORT BUMPER TRIM PLATE TO THE FRONT OF THE BUMPER USING THE PROVIDED 13 BOLTS AND NUTS. DO NOT TIGHTEN UNTIL ALL HARDWARE IS INSTALLED. FIG. 12



4. INSTALL BUMPER END TOP TRIM PLATES USING THE 2 PROVIDED BOLTS. FIG. 13



5. UNPLUG HITCH PLUG. FIG 14. REMOVE 4 FACTORY HITCH BOLTS. RETAIN BOLTS AND HITCH FOR RE-INSTALLATION. FIG. 15

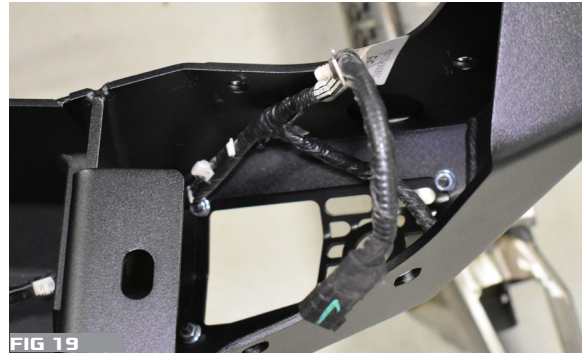


6. IF NOT EQUIPPED WITH A HITCH, THE HITCH WIRING SHIELD WILL NEED TO BE REMOVED BY REMOVING THE 2 BOLTS, FIG. 15B RETAIN BOLTS. (IT IS OPTIONAL TO USE EITHER THE FACTORY HARDWARE PLUS THE PROVIDED HARDWARE FOR THE BUMPER OR JUST THE PROVIDED HARDWARE. DETACH THE WIRING FROM THE INSIDE OF THE SHIELD. SHIELD WILL NOT BE REUSED, FIG. 15C

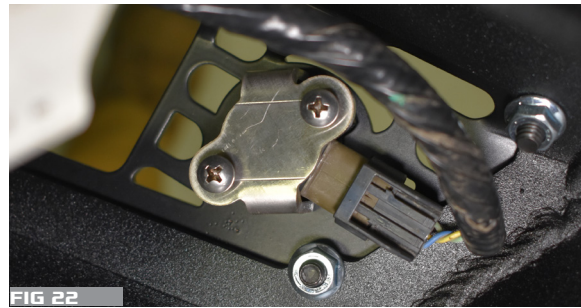
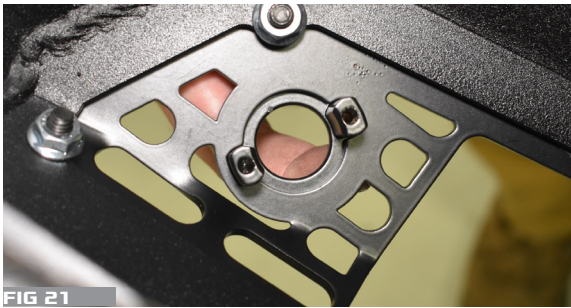


7. ROUTE WIRE HARNESS THROUGH NEW BUMPER NOTING CORRECT ORIENTATION. FIG. 16,17,18,19,20





8. INSTALL THE 4 FACTORY SENSORS WITH PROVIDED BEZELS, BRACKETS AND HARDWARE IF EQUIPPED INTO NEW BUMPER. INSTALL BEZEL INTO FRONT. FIG. 21 INSTALL SENSOR INTO BEZEL LOCKING INTO PLACE USING BRACKET AND PROVIDED SCREWS. FIG. 22 NOTE SENSOR MOUNTS WITH CENTER HOLES ARE TO BE USED ON THE INSIDE HOLES OF THE BUMPER FIG. 23



9. USE PROVIDED WIRING RETAINING CLIPS AS NEEDED TO KEEP WIRE HARNESS IN PLACE. FIG. 24



10. INSTALL LIGHT POD BRACKETS INTO THE BUMPER OFFSET TO CENTER, USING THE 2 PROVIDED BOLTS, NUTS AND WASHERS(1- 1/2" BUTTON HEAD AND 1- 1/4" BUTTON HEAD). FIG. 25

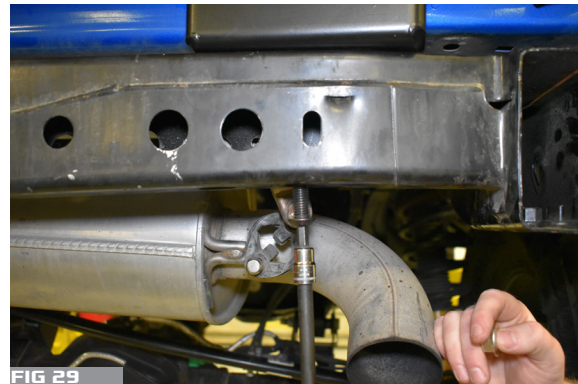
NOTE: DESIGNED WITH BAJA DESIGN 3X3 POD LIGHTS. PODS NEED TO BE INSTALLED UP SIDE DOWN.



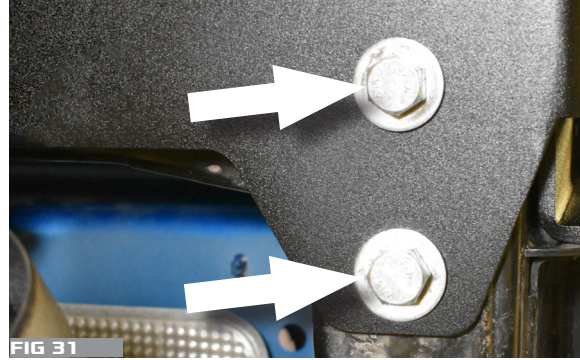
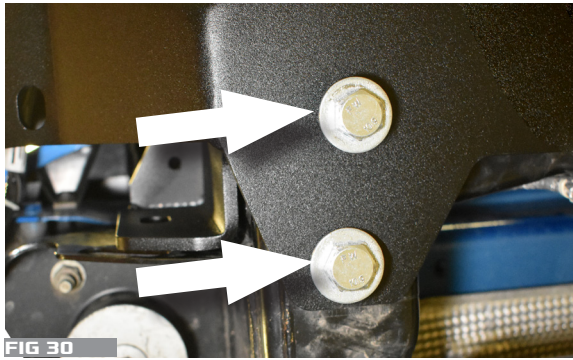
11. MOUNT LIGHT POD INTO THE BRACKET. FIG. 26 FEED LIGHT WIRING THROUGH THE HOLES SHOWN IN FIG. 27



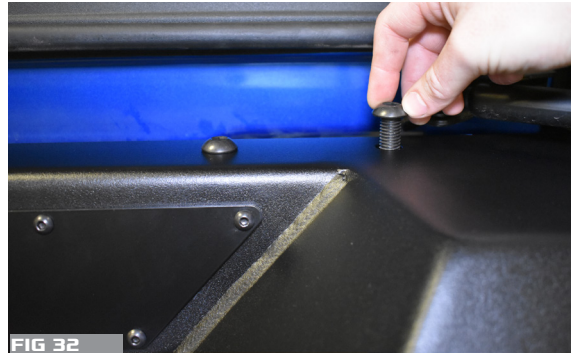
12. INSTALL BUMPER BRACKETS TO TOP OF THE REAR CROSS MEMBER. FIG. 28 BOLTS ARE INSTALLED FROM THE BOTTOM UP. FIG. 29 DO NOT TIGHTEN.



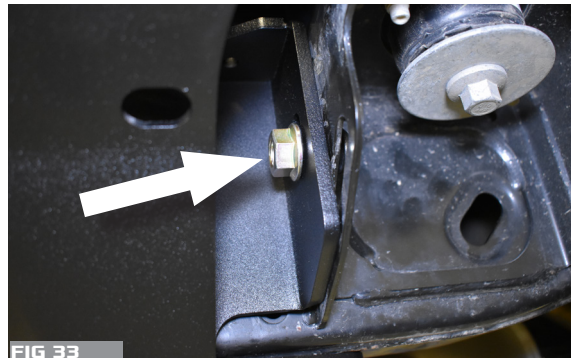
13. TO INSTALL BUMPER 2 PEOPLE ARE RECOMMENDED. LIFT BUMPER INTO PLACE INSTALLING THE 4 BOTTOM BOLTS ON DRIVER AND PASSENGER SIDE OF THE BUMPER. DO NOT TIGHTEN. FIG. 30, FIG 31



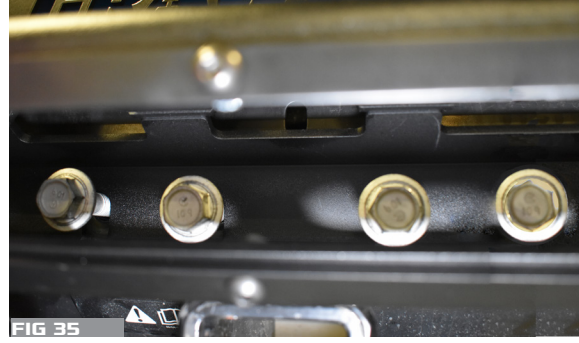
14. TO INSTALL THE 4 TOP BOLTS AND NUTS ON DRIVER AND PASSENGER SIDE OF THE BUMPER, FIRST OPEN THE REAR GATE TO ALLOW ROOM TO ACCESS THE TOP OF THE BUMPER. DO NOT TIGHTEN FIG. 32



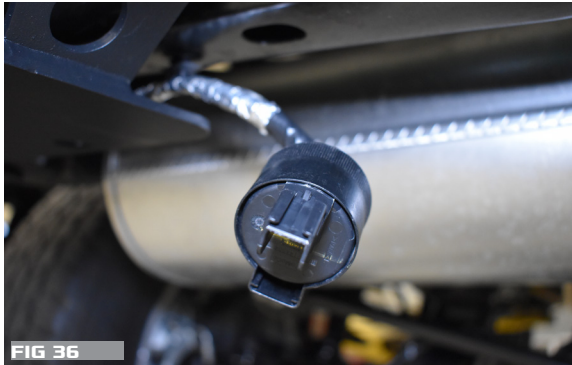
15. INSTALL 2 BOLTS AND NUTS ON BOTH SIDES OF THE BUMPER. DO NOT TIGHTEN FIG. 33



16. RE-INSTALL FACTORY HITCH, FITTING BETWEEN BUMPER AND REAR CROSS-MEMBER. USE THE OPENING IN THE REAR BUMPER TO INSTALL THE 4 FACTORY BOLTS. FIG. 34, 35. BRONCO MODELS NOT EQUIPPED WITH A FACTORY HITCH, USE C0066 HARDWARE TO ATTACH THE BUMPER TO THE REAR CROSS-MEMBER



17. ZIP TIE THE TRAILER PLUG HARNESS UP TO THE BOTTOM OF THE BUMPER FOR FUTURE ACCESS. FIG. 36, 37



18. TIGHTEN ALL HARDWARE
19. RE-CONNECT HITCH PLUG TO WIRE HARNESS.
20. RE-CONNECT WIRE HARNESS ON BOTH SIDES OF THE BUMPER.





YOU'RE NOT DONE YET!

Thank you for your new CrawlTek Revolution purchase! Follow us on facebook for up to date coverage of new product releases. We love feedback, if you have any questions about the installation or parts were missing please contact us at sales-crawltek@ridefox.com or call us at 517.278.1039.

*Be sure to show off your jeep to the rest of the CrawlTek Revolution online.
Find us on facebook and instagram to keep up on new products, upcoming events and more action.
Tag us @crawltek for a chance to get featured*

