

# INSTALLATION GUIDE

## MK7 VW GTI DOWNPIPE

**MAPPerformance.com**

### TOOLS REQUIRED:

6mm Allen Wrench  
13mm Socket  
22mm Wrench



### WHAT'S IN THE BOX:

1 Main Downpipe Section  
1 Straight Downpipe Section  
1 V-Band Clamp



### NOTES:

MAP MK7 Downpipes no longer include the rear engine bracket to improve ease of installation and due to bracket location differing on some models of MK7s.

If you have any questions please call!

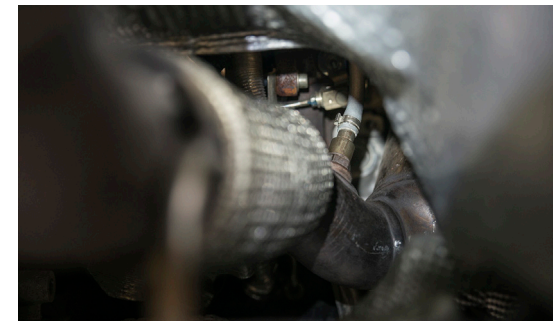
### 1. DISCONNECT THE BATTERY



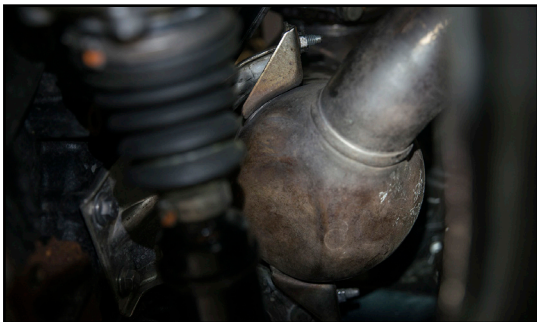
### 2. LOOSEN 6MM ALLEN BOLT FOR V-BAND



### 3. REMOVE DOWNSTREAM O2 SENSOR



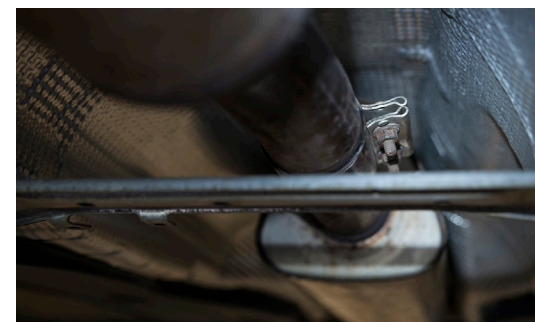
**4. REMOVE TWO 13MM NUTS ATTACHING  
DOWNPIPE TO THE SUPPORT BRACKET**



**5. REMOVE FOUR 13MM BOLTS FOR THE  
EXHAUST SUPPORT BRACE**



**6. REMOVE THE TWO 13MM NUTS FOR THE  
EXHAUST SLIP JOINT**



**7. REMOVE THE DOWNPIPE HANGER BRACKET  
AND SAVE**



**8. REMOVE THE OEM DOWNPIPE FULLY**

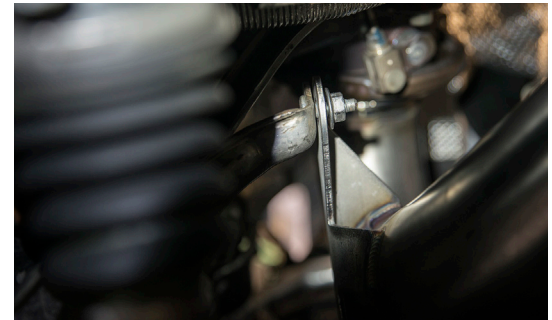




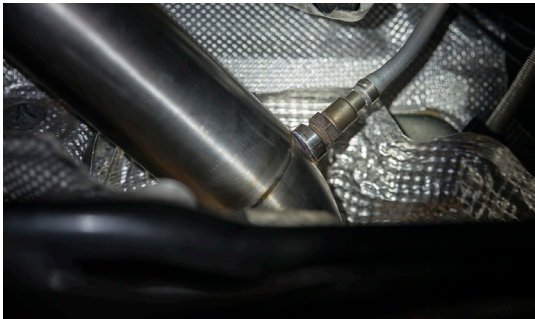
**9. INSTALL MAP DOWNPIPE ON  
SUPPORT BRACKET**



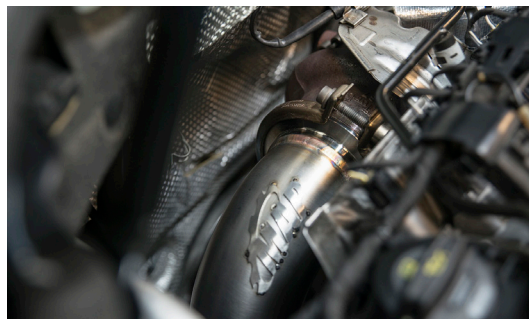
**10. START THE TWO 13MM BOLTS FOR  
SUPPORT BRACKET BUT DO NOT TIGHTEN**



**11. REINSTALL THE O2 SENSOR**



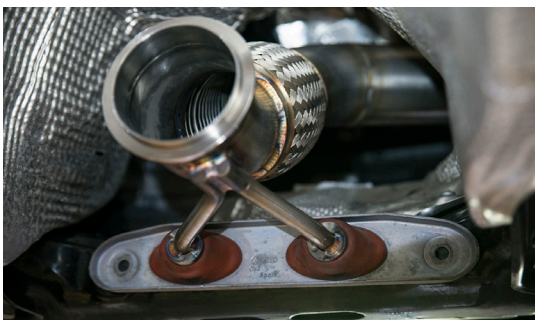
**12. TIGHTEN THE V-BAND CLAMP TO TOP  
OF DOWNPIPE AT TURBO**



**13. TIGHTEN THE HANGER BRACKET BOLTS**



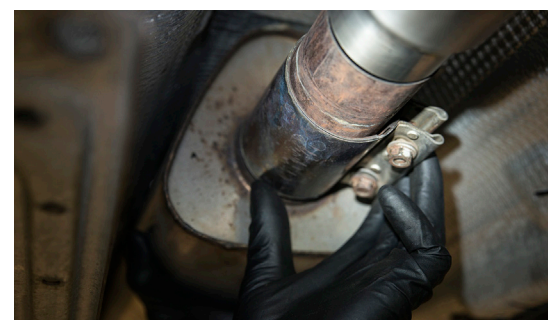
**14. FULLY TIGHTEN ALL NUTS AND BOLTS**



**15. ATTACH AND TIGHTEN V-BAND CLAMP TO  
STRAIGHT DOWNPIPE SECTION**

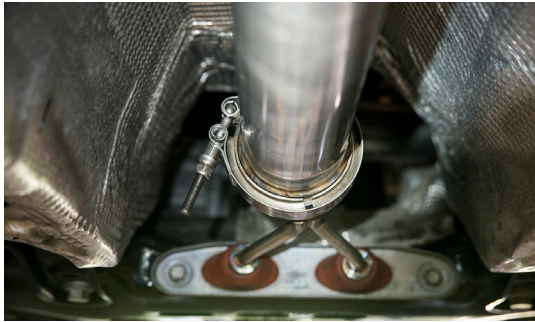


**16. PLACE AND TIGHTEN THE SLIP JOINT**





**17. TIGHTEN THE V-BAND FULLY**



**18. REINSTALL THE EXHAUST SUPPORT BRACE**



**19. RECONNECT THE BATTERY - DONE!**



**THANK YOU FOR CHOOSING MAPPERFORMANCE!**

If you have any problems or concerns during installation of this product, feel free to call or email us:

**1-888-MAPPERFORMANCE**

**[ajohnson@mapperformance.com](mailto:ajohnson@mapperformance.com)**

**Show us some photos! [@mapperformance](#) / [#mapperformance](#)**