

**RV6[®] TUBE AND FIN
FRONT-MOUNT INTERCOOLER
HONDA FL5 CIVIC TYPE R (23+) &
ACURA DE5 INTEGRA TYPE S (23+)**





PRODUCT DISCLAIMER

*** Not CARB approved. Off-Road/Competition use only.**

RV6 Performance LLC products are sold for off-road and racing competition use only and not legal for use on highway or street vehicles, or other non-racing competition off-road vehicles. All performance modifications and installations are at the customers' own risk. RV6 Performance highly suggests that a trained professional conduct the installation on all products. RV6 Performance LLC holds no responsibility either implied or otherwise for mechanical, electrical or other failure when using any aftermarket performance products. Items sold for off-road use only are illegal in many states and provinces, and are intended for racing vehicles which may never be used on a public road. By purchasing any aftermarket performance product, the installer and/or user of the product takes full responsibility for any use, and/or misuse of the product.



PROPOSITION 65

WARNING: This product can expose you to chemicals including lead, which is known to the State of California to cause cancer.

For more information, go to www.P65Warnings.ca.gov

HARDWARE COMPONENT LIST

Please ensure that all components listed below are accounted for before beginning installation.



1 x RV6 Acrylic Stencil



2 x Intercooler Gaskets



2 x Front Bumper Rubber Seals
(Civic Only)



1 x Pry Tools Kit

REQUIRED TOOLS

Ratchet	10mm Socket	12mm Socket
6" Socket Extension	Torque Wrench	Pliers
Phillips Head Screwdriver	Flat Head Screwdriver	Razor Blade
Drill	5/16" Drill Bit	Clip Removal Tool (Included)
Masking Tape (Optional)		

RECOMMENDED FOR STENCIL (OPTIONAL)

Automotive High Heat Enamel Spray Paint

Stenciling should be done before the installation process. Follow the cure time and instructions of the enamel spray paint.

INSTALLATION OVERVIEW

Please review this document in its entirety prior to proceeding with each step to familiarize yourself with the overall process and ensure you have the proper tools required. Use a storage tray to hold all the screws and clips during the installation process.

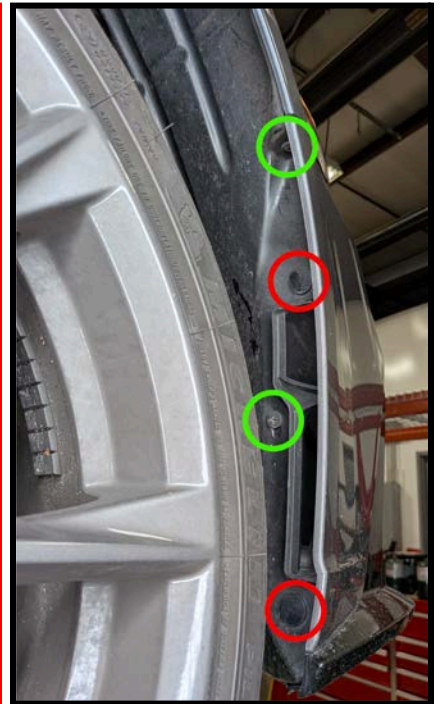
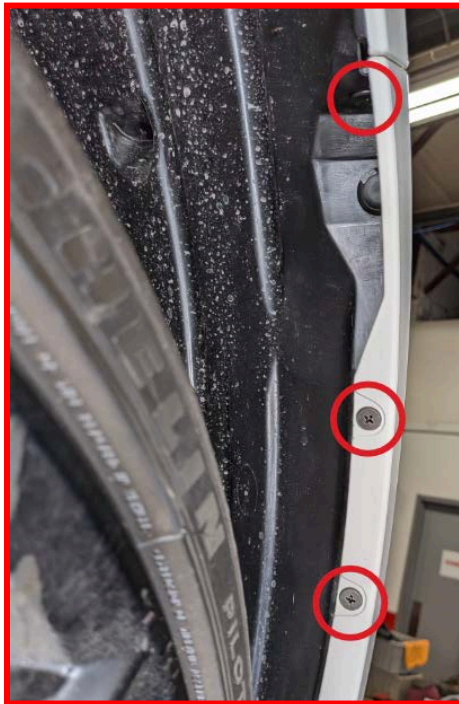
FRONT BUMPER REMOVAL GUIDE

1

Tools: Phillips Screwdriver and Clip Removal Tool.

FOR CIVIC (outline in red), remove the 3 screws from the fender liner in the wheel well. Repeat the same steps on the other side.

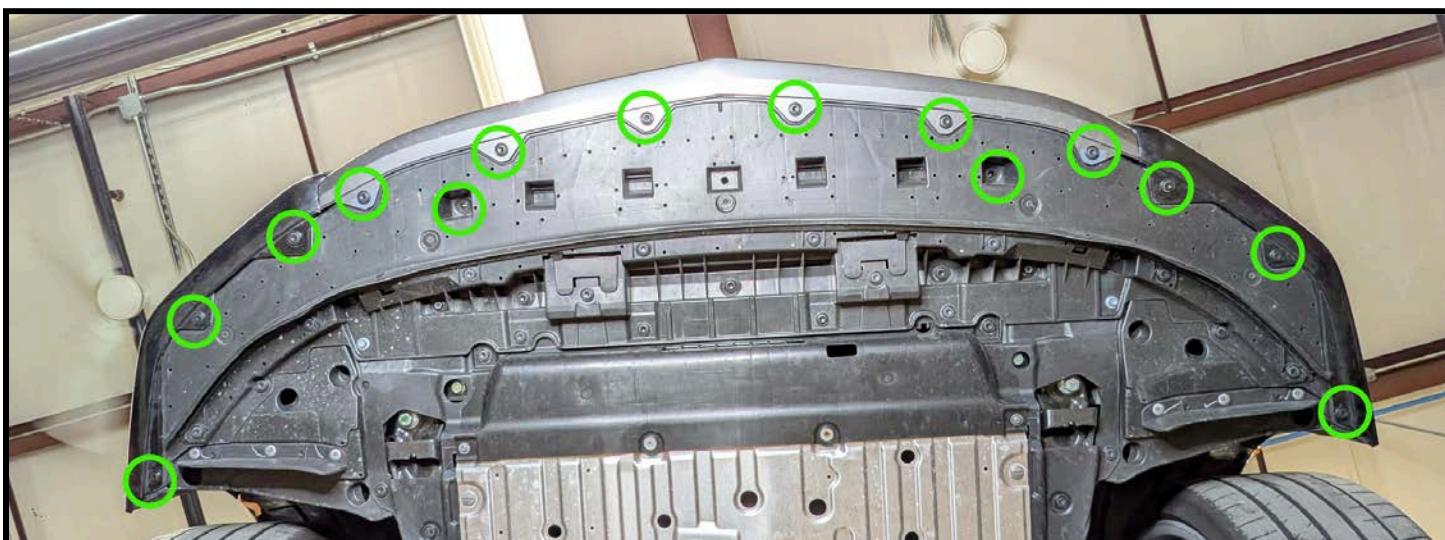
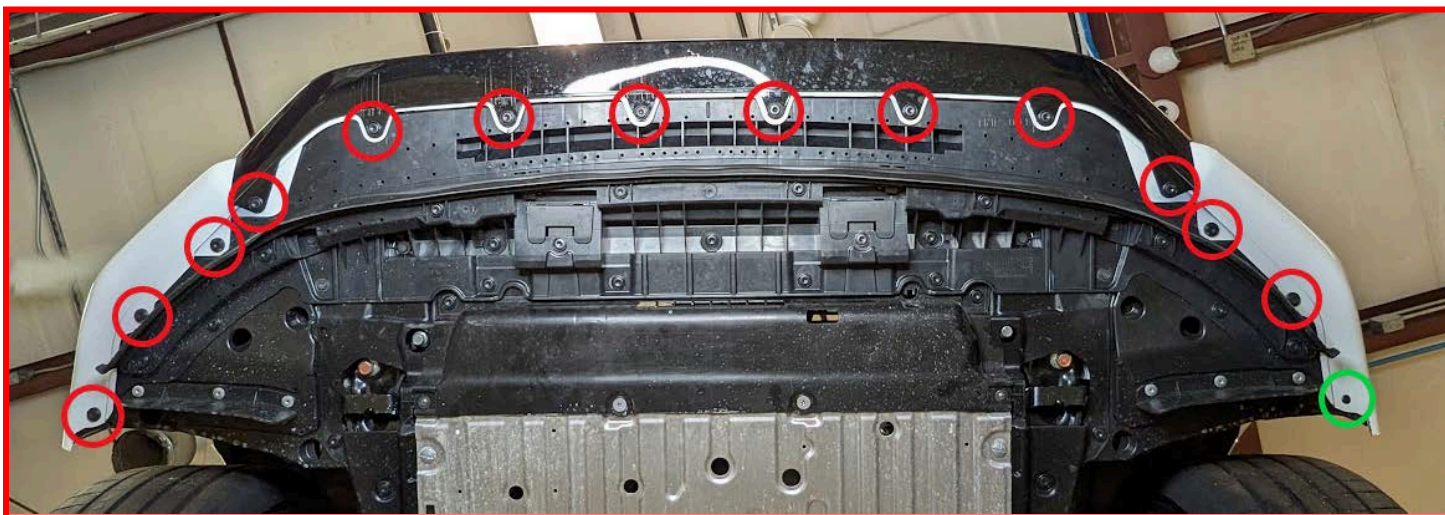
FOR INTEGRA (outline in black), remove the 2 screws and 2 clips from the fender liner in the wheel well. Repeat the same steps on the other side.



2

FOR CIVIC (outline in red), remove the clips from the undertray/skid plate where the front bumper is attached. 13 Clips circled in red and 1 screw circled in green.

FOR INTEGRA (outline in black), remove the 14 clips circled in green.



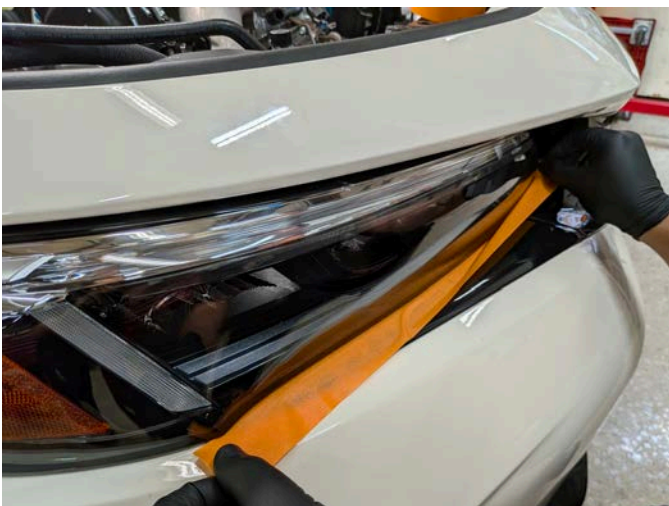
3

With the Clip Removal Tool, remove all the clips in the upper section of the front bumper in the engine bay. Please note that the last two clips (red arrows) on either side are hidden underneath the rubber weather seal. (12 Clips total)



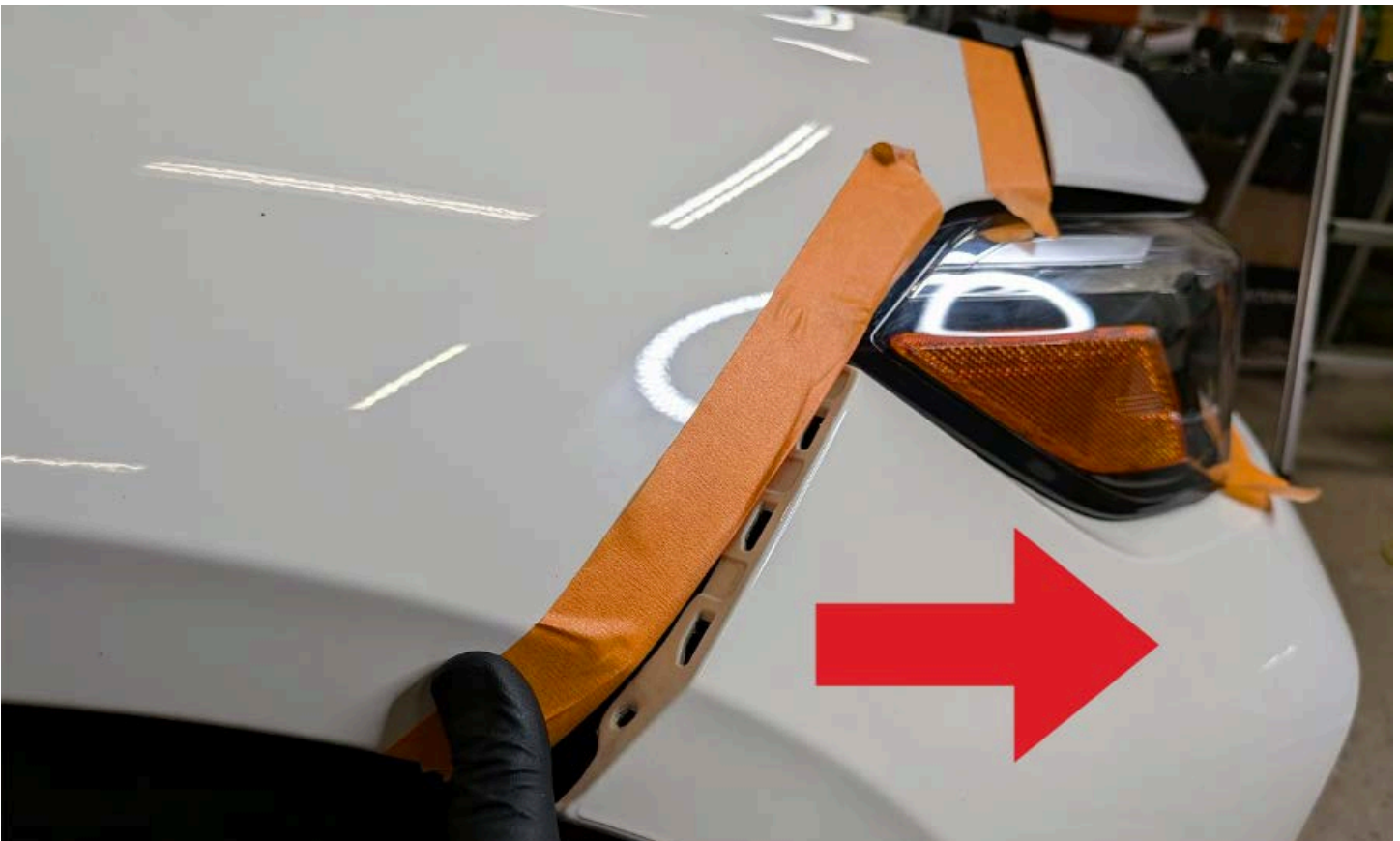
4

OPTIONAL: Use masking tape to protect the paint around the bumper during the removal process. Insert the masking tape into the cracks along the front bumper and headlights.



5

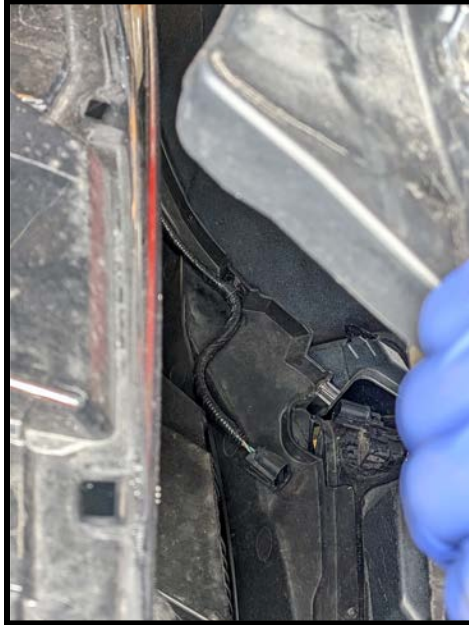
With a firm and controlled movement, push the upper part of the bumper towards the direction of the red arrow. Pry outward for the lower part of the bumper. Repeat on the other side. **For the Integra, please go to step 6 before removing the bumper.** Carefully set the bumper aside.



6

FOR INTEGRA WITH FRONT BUMPER SENSORS.

Detach the sensor cables from the sensor. Using pliers, pinch the clip holding the cable to the bumper. There are three sensor locations (left, center and right) along the bumper. Remove the bumper and carefully set the bumper aside.



INTERCOOLER INSTALLATION

1

Using a sharp razor blade, trim off the air temperature sensor mounting tag from the plastic air dam. **Use caution when trimming the tag, do not cut self or the wire.** Remove the sensor from the mounting tag.



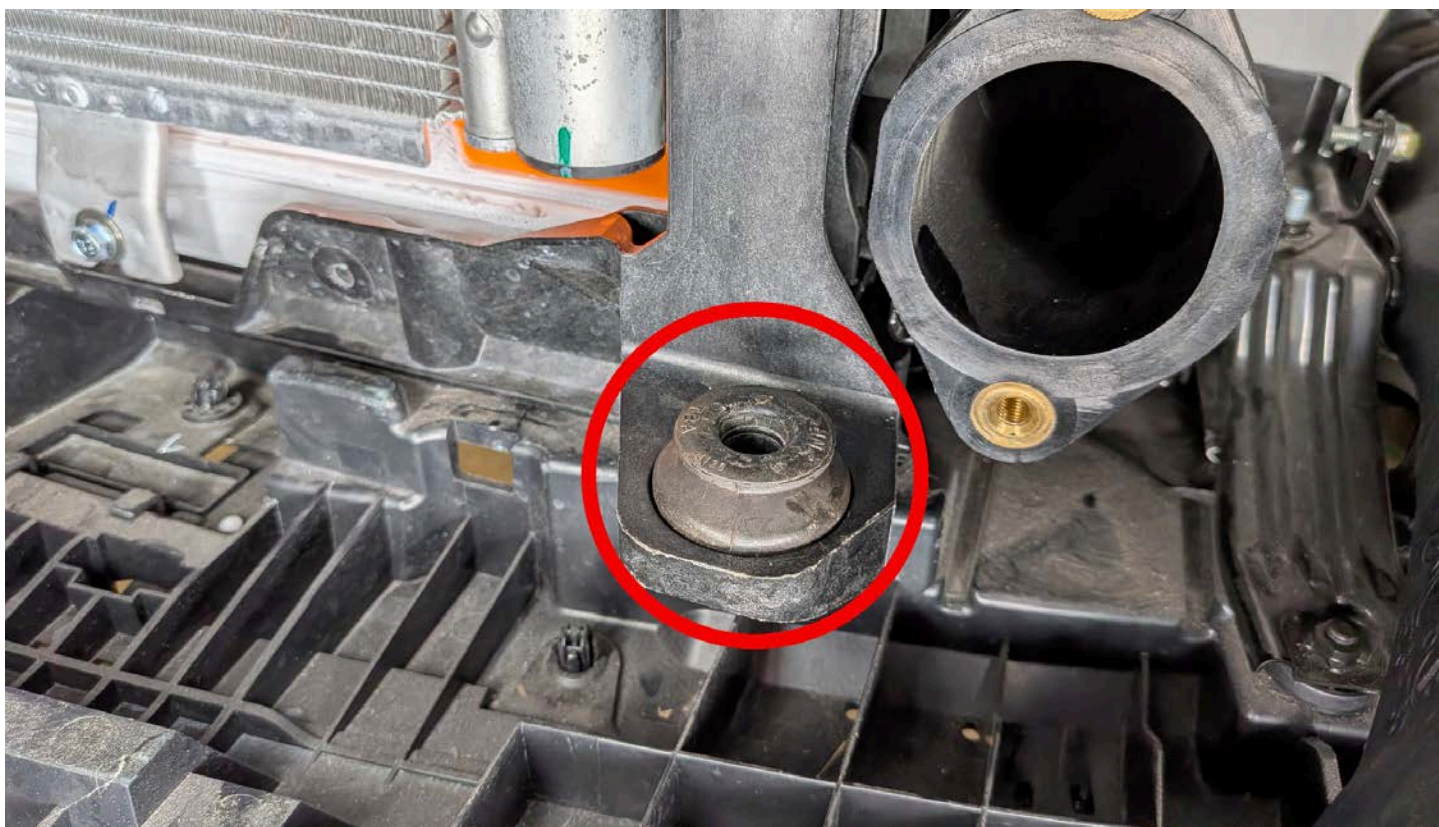
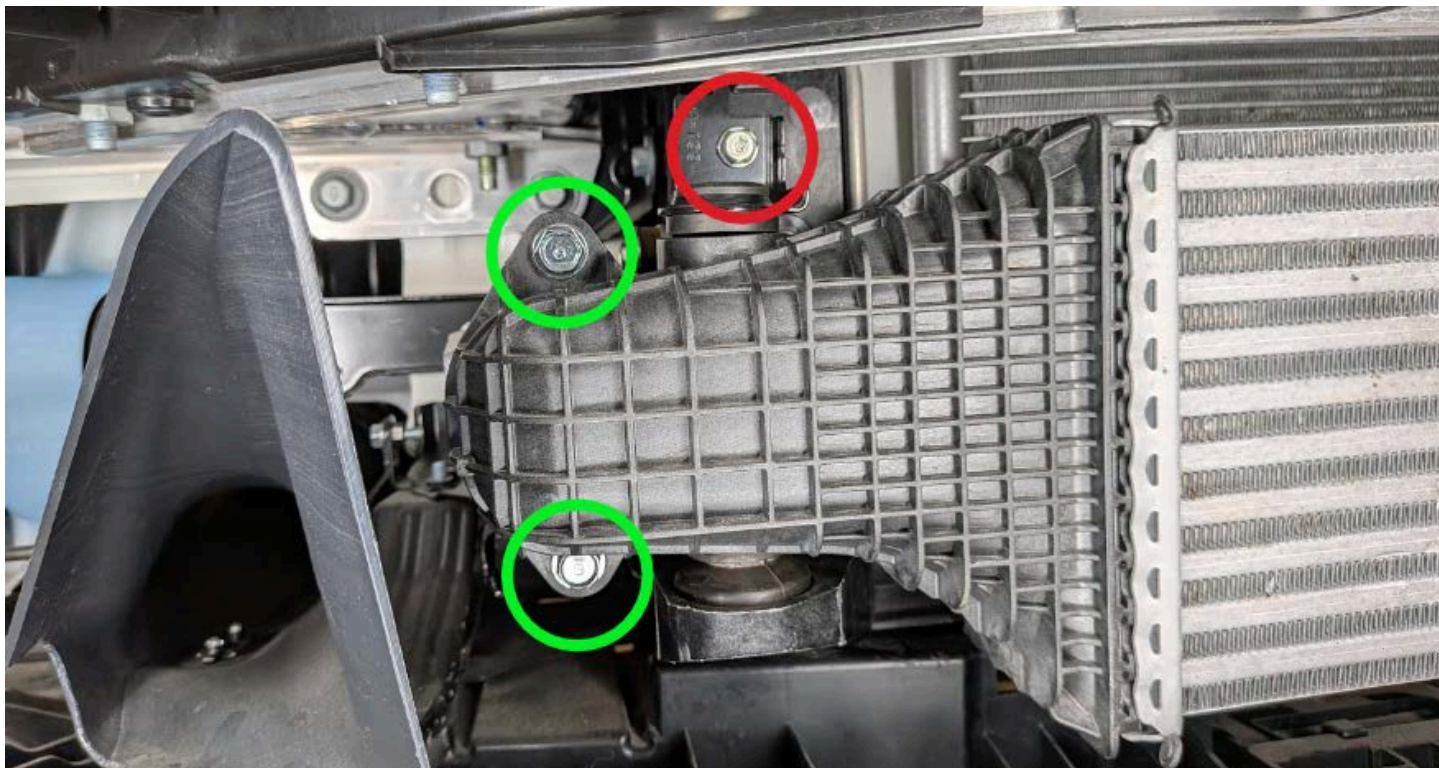
2

Drill a 5/16" hole in the plastic bumper support in front of where the original mounting tab location. Attach the sensor to the new location.



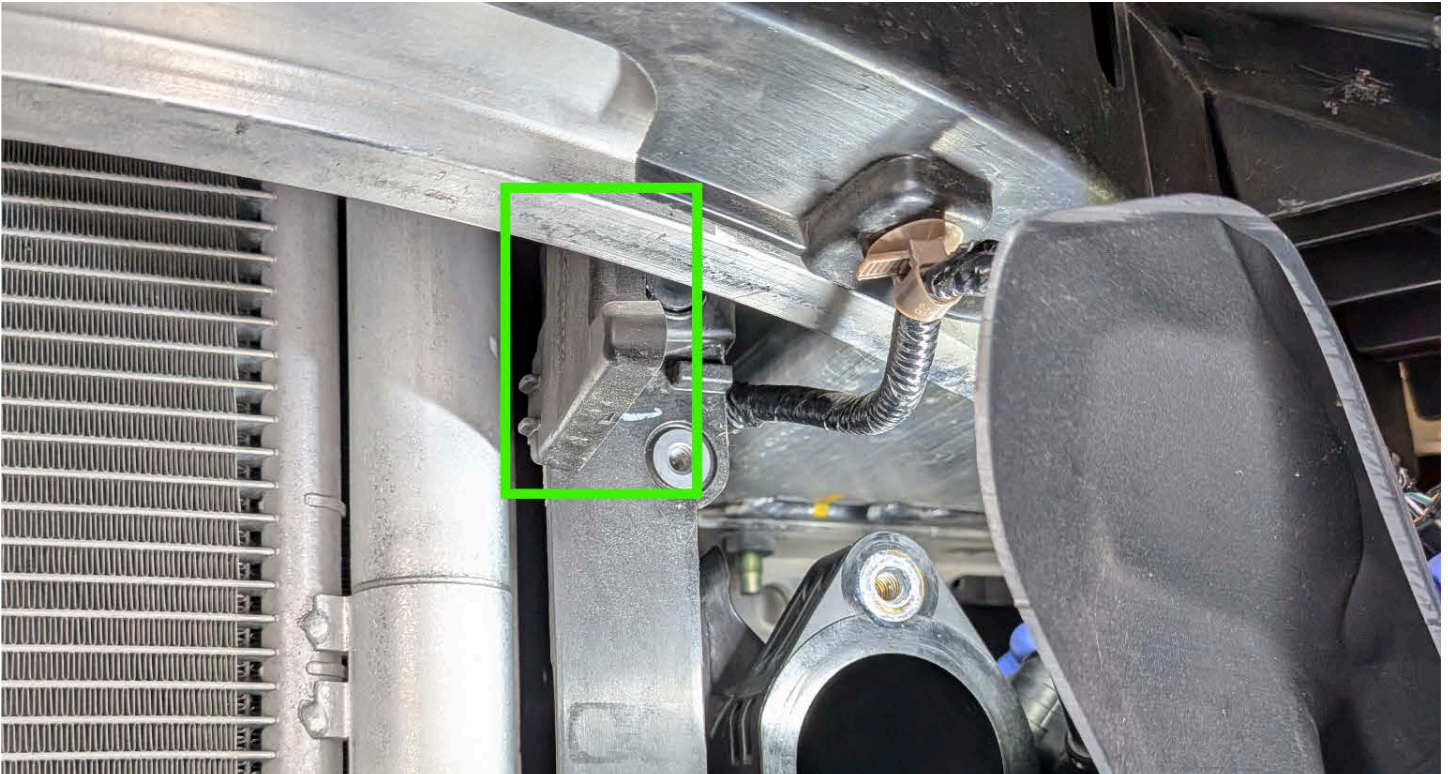
3

Remove the 10mm bracket bolt (red circle) and the two 12mm endtank bolts (green circle) from each side. Remove the intercooler and set aside. Keep the two factory mounting grommets.



4

Remove the Left and Right Induction Plate. The first clip will be above the bumper support and the second clip will be under the bumper support. Repeat on the other side.



5

FOR INTEGRA ONLY.

Remove the clip from the back side of the bottom guard. Remove the bottom guard.



6

FOR INTEGRA ONLY.

Lay the bottom guard, smooth side facing down. Use a sharp razer blade to remove the notches from the underside of the bottom guard.



7

Install the supplied Intercooler Gaskets into the groove of the RV6 Intercooler Endtanks. Press the gasket into the grove, making sure it is flush inside the groove.



8

Slide the factory mounting grommets onto the bottom peg of the RV6 Intercooler for both sides.



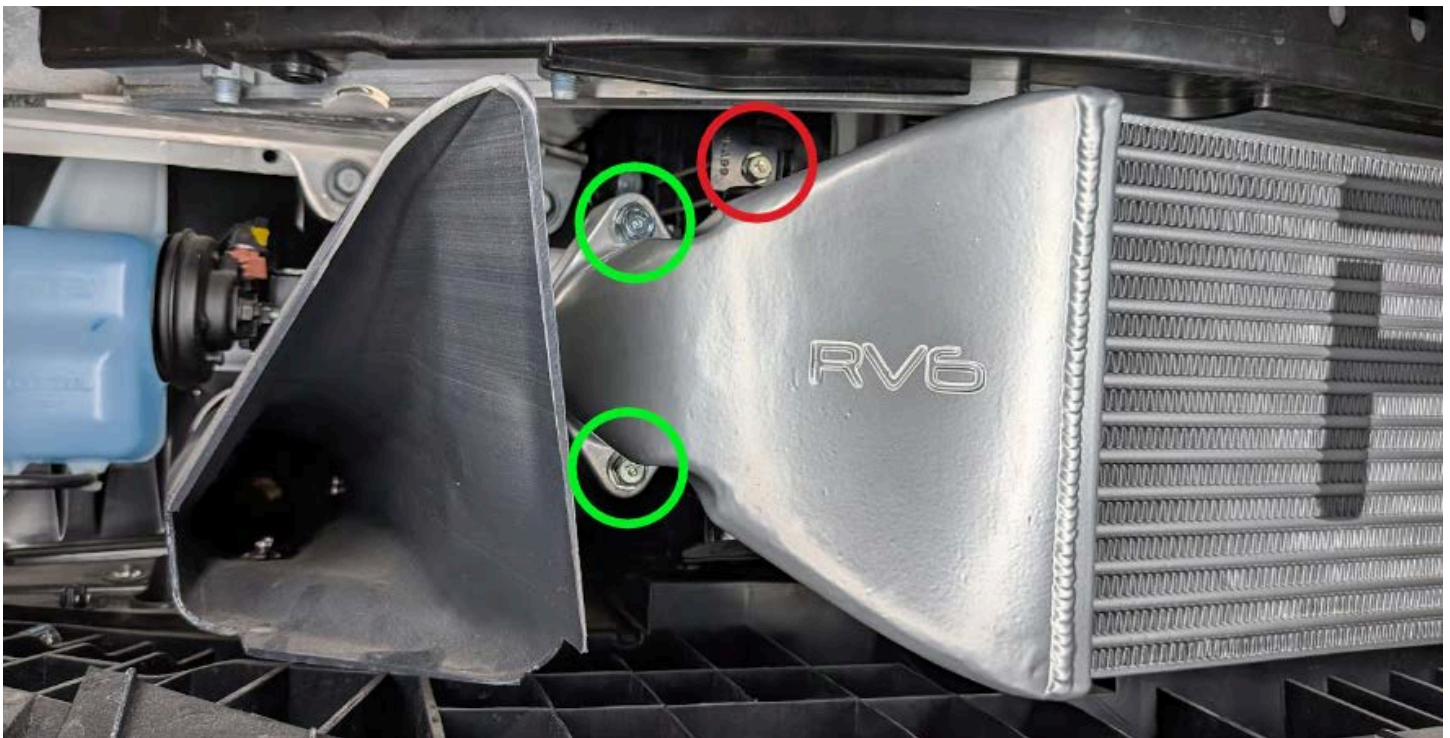
9

Install the new Intercooler into place. Ensure that the cast RV6 logo on the Endtank is positioned on the left side.



10

Secure the Intercooler by bolting it in place using the factory bracket and the chargepipes. **Torque the 10mm bracket bolt (red circle) at 9 lbs-ft and the two 12mm Endtank bolts (green circle) at 18 lbs-ft. Repeat on the other side.**



11

Using a Phillips screwdriver, remove the Duct Plates on the front bumper from both sides.



12

FOR CIVIC ONLY.

Install the supplied pressure fit Rubber Seals onto the plastic Intercooler grill on both sides by pressing it into place.



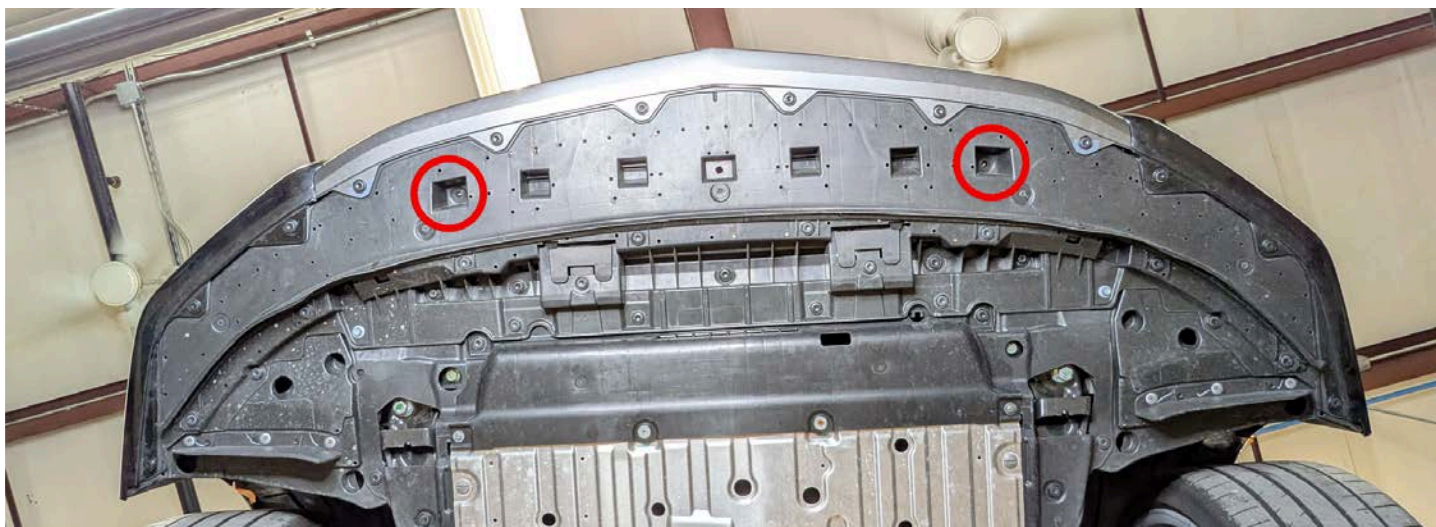
13

FOR THE INTEGRA ONLY.

Slide the bottom guard back into place underneath the Intercooler.



NOTE: The push-pins do not need to be re-installed in the location circled in red. The Intercooler will be sitting on top of the bottom guard, there won't be enough clearance for the push-pins to lock into place.



14

Once everything is secure and the components are in place. Begin the re-installation process for the front bumper. Follow the bumper removal instructions in reverse order.

