



## Toyota Yaris GR - FMINT25-WSRB FITTING INSTRUCTIONS



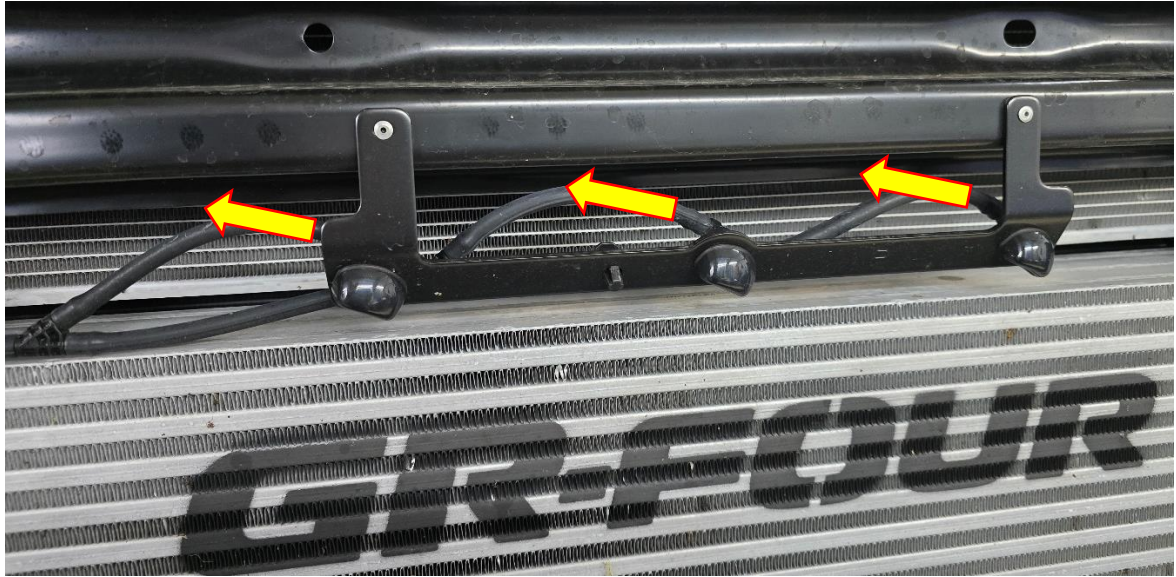
**Please thoroughly read through and familiarise yourself with these instructions in their entirety prior to beginning any part of the installation process of any component. Please also ensure the vehicle and engine has cooled down sufficiently to avoid risking possible skin burns or other injury.**

### **TOOLS NEEDED:**

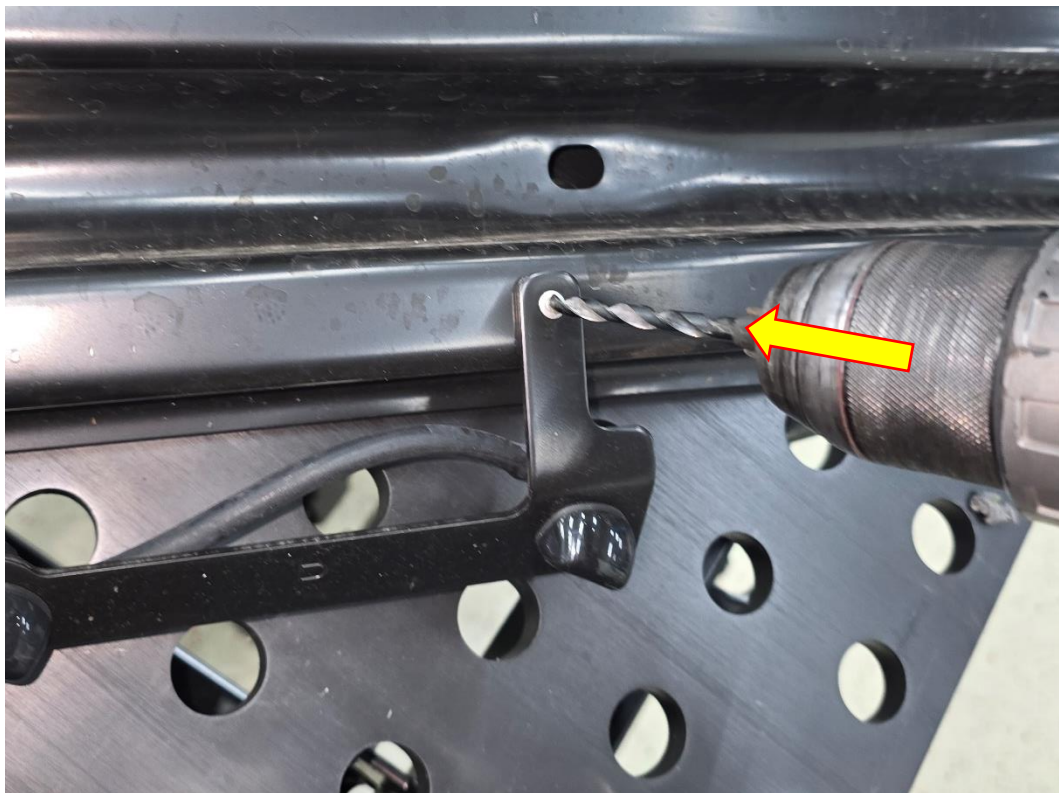
Drill – with 7mm drill bit  
T20 torx and suitable drive

**Following on from STEP 9 inside the FMINT25 fitting instructions**

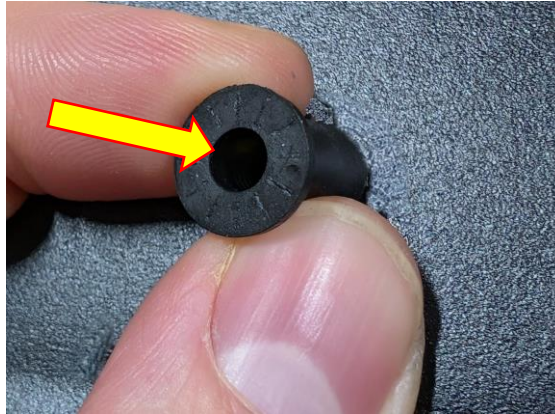
1. Disconnect the 3 water spray hoses from the back of each nozzle, by twisting and pulling gently at the base of the connection. You can now remove the crash bar from the vehicle.



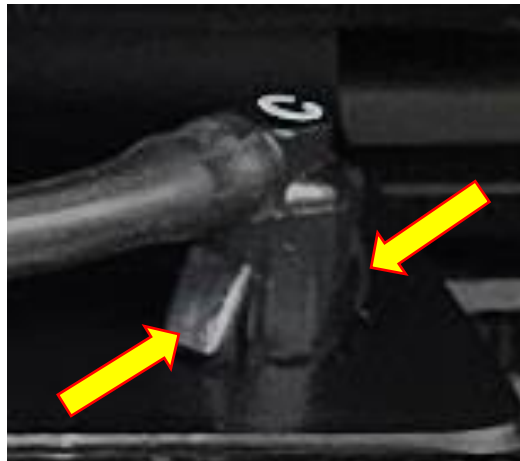
2. With the crash bar removed take your drill with a 3.5mm drill bit inserted and carefully drill out the two rivets that hold the OEM water spray bracket in place. Once the rivets are removed use a 7mm drill bit to increase the size of the drilled hole, this will be required for the rubber riv nut which will now be used to hold the Forge Motorsport water spray bracket in place.



3. Push the cylindrical end of the rubber riv nut into the x2 7mm holes you've just bored out in the crash bar, make sure the underside of the flange is flush against the crash bar.



4. Offer up the Forge Motorsport water spray bracket to the crash bar and bolt into place using a T20 torx and suitable drive with the supplied M4 bolts and washers.
5. Remove the nozzles from the OEM water spray bracket by depressing the tabs on either side of each nozzle then push through the hole to remove.



6. Push the nozzles into the appropriate holes on the Forge Motorsport water spray bracket, making sure to copy the same orientation (nozzle spray on underside of bracket, water line on top side of bracket)

7. Continue with STEP 10 from the FMINT25 fitting instructions to complete the installation of the Forge Motorsport intercooler. **REMEMBER that when the crash bar is refitted to the vehicle you MUST remember to reconnect the water lines to the nozzles to complete the installation for FMINT25-WSRB.**



Check out [WWW.FORGEMOTORSPORT.CO.UK](http://WWW.FORGEMOTORSPORT.CO.UK) and [WWW.FORGEMOTORSPORT.COM](http://WWW.FORGEMOTORSPORT.COM)  
For a full range of performance products for your vehicle.

If you have any questions or concerns about this product or anything else, please feel free to contact your local or preferred Forge Motorsport Dealer/Installer or you may contact us directly.

**Forge Motorsport UK** (+44)1452 380999  
**Forge Motorsport ASIA** +886-4-22516887

[info@forgemotorsport.co.uk](mailto:info@forgemotorsport.co.uk)  
[sales@forgemotorsport.asia](mailto:sales@forgemotorsport.asia)



Forge Motorsport



@forgemotorsport



@forgemotorsport



Forge Motorsport