



TOYOTA TACOMA 2WD/4WD '16-23 | 4-RUNNER '10-23 | FJ '10-14

PERFORMANCE SLAPPER LOWER CONTROL ARM KIT

PART# CAM-310167

Thanks for purchasing our performance lower control arms. If you are not installing these yourself have a qualified shop do so. These arms are designed to be used with stock OEM spindles or Camburg performance spindles. Check the parts list to make sure you have every component prior to installing. Camburg Engineering has made every attempt to insure you receive the highest quality components in the most complete manner. This is a guide to help you through the process with some recommended torque specs & notes. It's your responsibility to ensure parts are being installed correctly using the correct tools and procedures. For step-by-step instructions refer to a Toyota or Haynes service/repair manual.

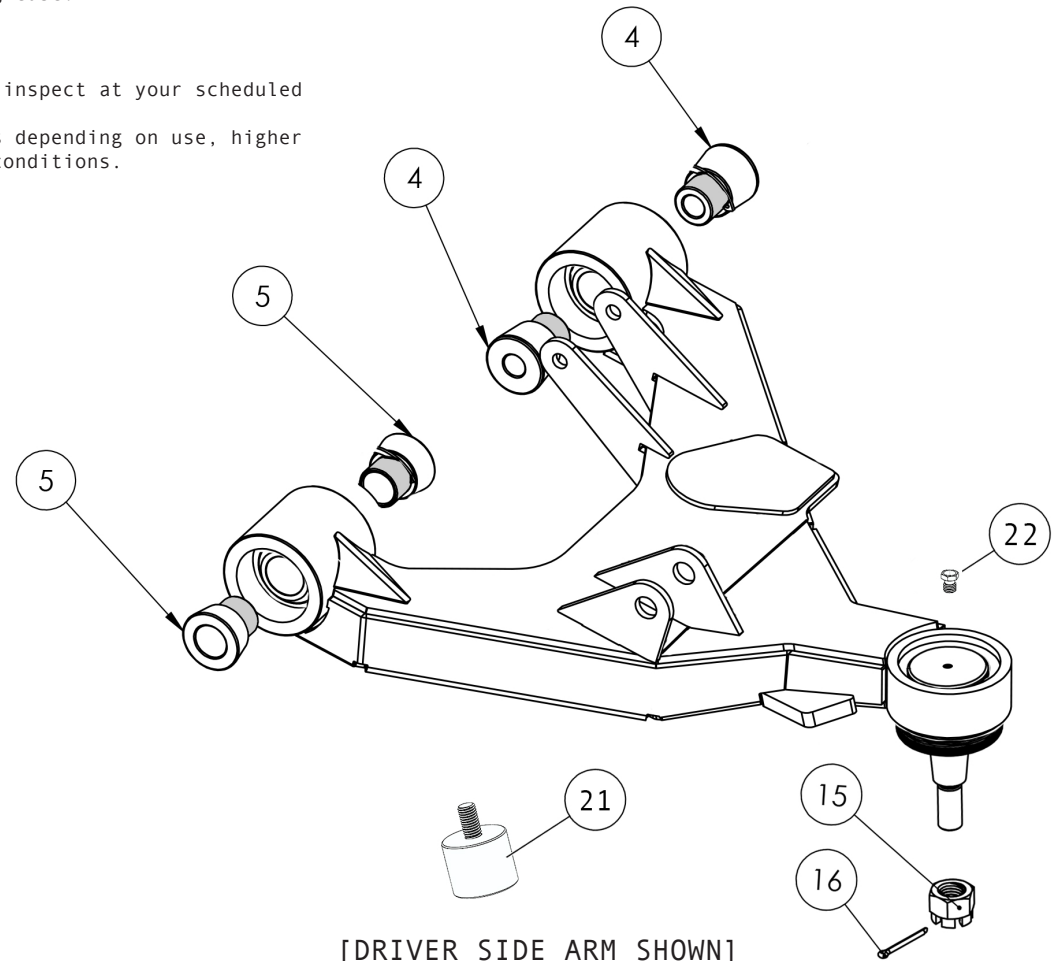
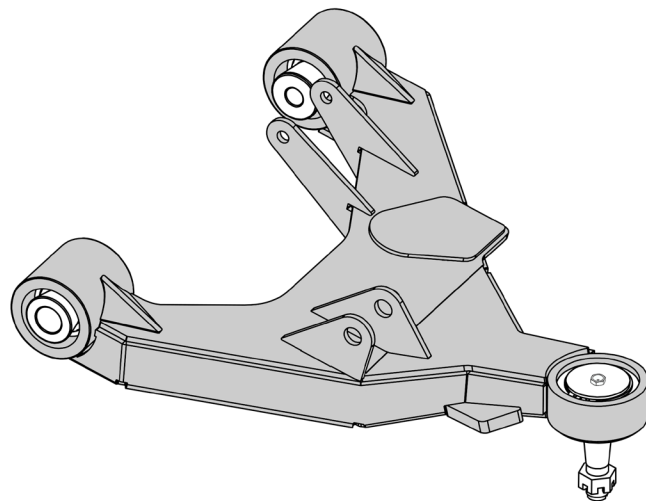
Important Installation Notes:

- Does NOT fit KDSS 4-Runner models
- 4-Runner/FJ's must use coilovers with bearing lower rod ends (OEM, TRD Pro & Bilstein 5100/6112 will not fit)
- When running larger than stock tires we recommend a zero offset wheel (maximum backspacing = 4.75")
- Re-uses lower OEM shock hardware and alignment cam hardware
- Use machined bump stop spacers with OEM rubber bump stops only
- Grease lower ball-joints prior to use or damage will occur using a grease gun with a tip/adaptor for flush fittings. We recommend using a high temp. lithium complex #2 synthetic grease.
- Apply anti-seize to uniball spacer surfaces (shaded gray in diagrams)
- Use RED loctite on all fasteners > 1/4" dia.
- Use BLUE loctite on all fasteners < 1/4" dia.
- Inspect and re-torque all hardware and components after the first 500 miles, inspect at your scheduled maintenance intervals and whenever using the vehicle off-road.
- We recommend greasing the ball-joints 2-3 times per year or every 5-8k miles depending on use, higher frequency lubing may be required when used off-road and/or in wet/snow/mud conditions.

Recommended Torque Specs:

- Lower Ball-Joint Castle Nut = 105 ft/lbs.
- Lower Ball-Joint Cradle M16 Bolts = 118 ft/lbs.
- Alignment Cam Hardware = 135 ft/lbs.
- Lower Shock Hardware = 65 ft/lbs.
- Outer Tie Rod Castle Nut = 67 ft/lbs.
- Bump Stop and Spacer = 25 ft/lbs.
- Ball-joint Upper Arm Castle Nut = 81 ft/lbs.
- Uniball Upper Arm Nut = 125 ft/lbs.

ID	PART NBR	DESCRIPTION	QTY
		DRIVER SIDE LOWER ARM	1
		PASSENGER SIDE LOWER ARM	1
5	960263	1.00 X 0.825" FRONT LCA UNIBALL FRAME SPACER (SHORT)	4
4	960262	1.00 X 0.630" REAR LCA UNIBALL FRAME SPACER (LONG)	4
21	960603	BUMP STOP LOWERING SPACER	2
22	950204-G	FLUSH GREASE ZERK FITTING	2
15	950204-N	M16 X 2.0 CASTLE NUT	2
16	950204-C	COTTER PIN	2
	030017	CAMBURG 8.5" STICKERS	4



[02.02.23]

Due to the extreme and punishing nature of off-road use, Camburg Engineering products have no implied or expressed warranty. Camburg Engineering products and components are designed and manufactured for off-road use only. Always inspect your suspension after off-roading and at your routine service intervals. Use of products sold by Camburg Engineering is at the consumer's own risk. Proper installation and proper use of all products must be followed for optimal safety and performance. Camburg Engineering does not accept responsibility for improper use, alterations, lack of maintenance/inspection and installation of any products. Installing most suspension products will raise the center of gravity of the vehicle and can increase the susceptibility to a rollover and alter the handling characteristics. Camburg Engineering products may void the vehicles warranty, check with your local dealer. The loss of use of the product, loss of time, inconvenience, removal, shipping costs, commercial loss or consequential damages are not covered. Camburg Engineering reserves the right to change the design, material or specifications of any product without assuming any obligation to modify any product previously manufactured and without prior notice. Every effort has been made to avoid printing errors and specifications. By purchasing, installing and/or using these products you are accepting these stated conditions and accept all liability and responsibility.