



CAMBURG FORD RAPTOR 2017-2020 PERFORMANCE SLAPPER LOWER CONTROL ARM KIT PART# CAM-110229

Thanks for purchasing our performance lower control arms. If you are not installing these yourself, have a qualified shop do so. These arms are designed to be used with stock OEM spindles or Camburg performance spindles. Check the parts list to make sure you have every component prior to installing. Camburg Engineering has made every attempt to insure you receive the highest quality components in the most complete manner. This is a guide to help you through the process with some recommended torque specs & notes. It's your responsibility to ensure parts are being installed correctly using the correct tools and procedures. For step-by-step instructions, refer to a Ford or Haynes/Chilton service/repair manual.

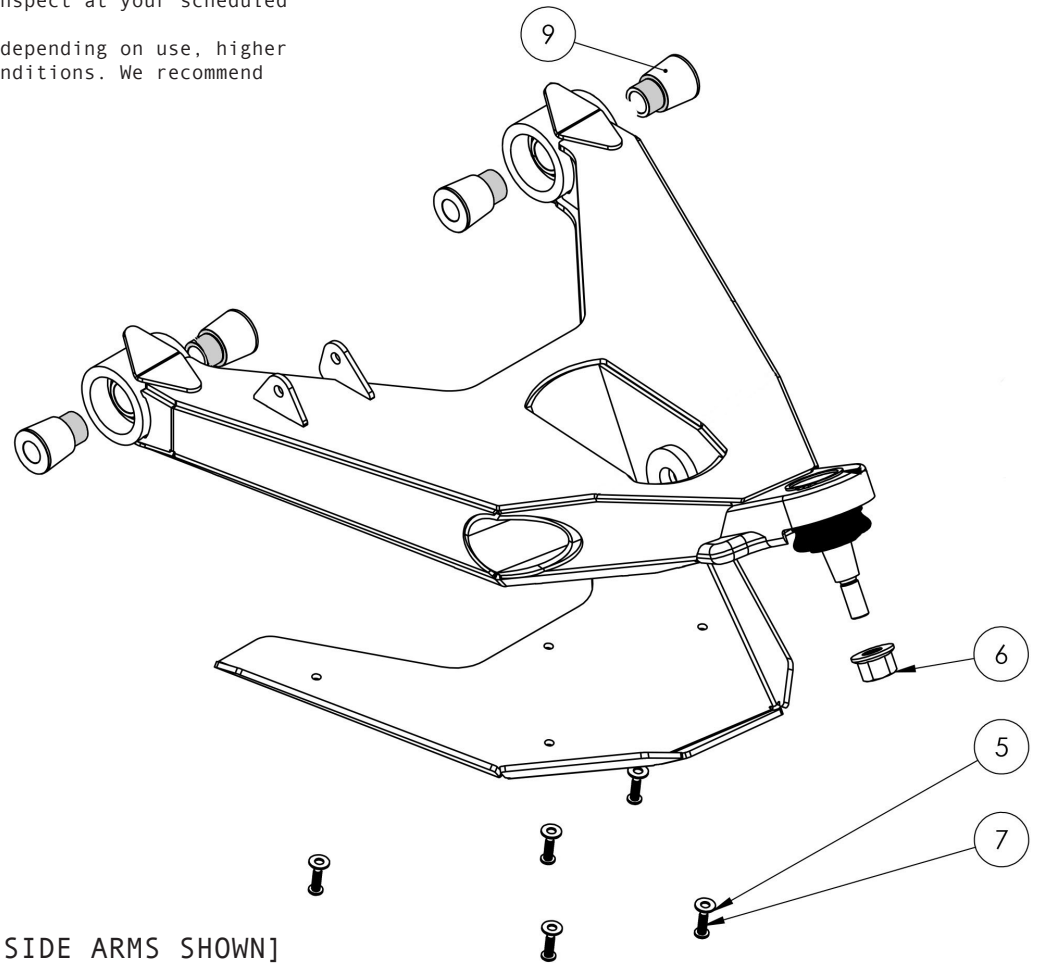
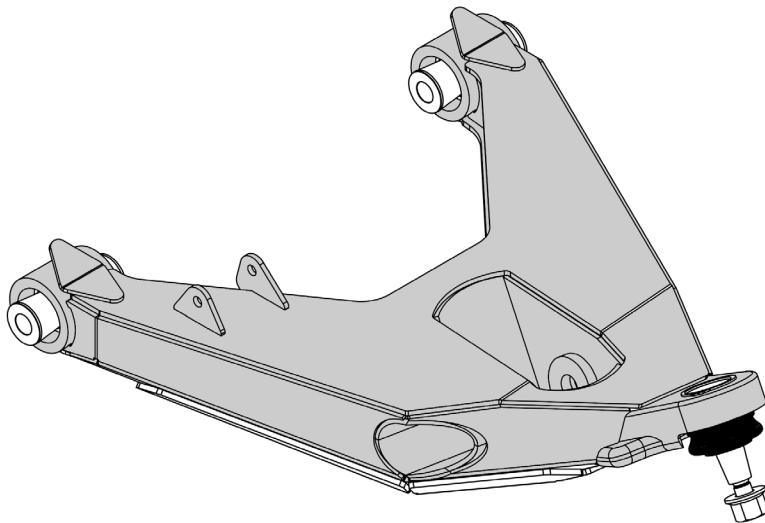
Important Installation Notes:

- Factory wheels will not work with these; you need aftermarket wheels with 4.75-5.00" of backspacing.
- The front sway-bar is eliminated with these lower control arms and needs to be removed.
- Re-uses lower OEM shock hardware and frame pivot hardware.
- Apply anti-seize to uniball spacer surfaces (shaded gray in diagram).
- Use RED loctite on all fasteners > 1/4" dia.
- Use BLUE loctite on 1/4" skid plate bolts.
- Inspect and re-torque all hardware and components after the first 500 miles, inspect at your scheduled maintenance intervals and whenever using the vehicle off-road.
- We recommend greasing the ball-joints 2-3 times per year or every 5-8k miles depending on use; higher frequency lubing may be required when used off-road and/or in wet/snow/mud conditions. We recommend using a high temp. lithium complex #2 synthetic grease.

Recommended Torque Specs:

- Lower Ball-joint Nyloc Nut = 115 ft/lbs.
- Lower Arm Frame Hardware = 260 ft/lbs.
- Lower Shock Hardware = 400 ft/lbs.
- 1/4" Skid Plate Bolts = 10-15 ft/lbs.
- Outer Tie Rod Nut = 85 ft/lbs.
- Ball-joint Upper Arm Nut = 85 ft/lbs.
- Uniball Upper Arm Nut = 125 ft/lbs.

| ID | PART NBR | DESCRIPTION | QTY |
|----|----------|-------------------------------------|-----|
| | | DRIVER SIDE LOWER ARM | 1 |
| | | PASSENGER SIDE LOWER ARM | 1 |
| | | DRIVER SIDE LOWER ARM SKID PLATE | 1 |
| | | PASSENGER SIDE LOWER ARM SKID PLATE | 1 |
| 9 | 960077 | LCA UNIBALL FRAME SPACER | 8 |
| 5 | 950010 | 1/4" SAE GRADE 8 ROUND WASHER | 10 |
| 7 | 950140 | 1/4-20 X 1" GRADE 8 HEX BOLT | 10 |
| 6 | 950137 | M14 X 2.0 NYLOC FLANGED NUT | 2 |
| | 030017 | CAMBURG 8.5" STICKERS | 4 |



[DRIVER SIDE ARMS SHOWN]

[04.12.23]

Due to the extreme and punishing nature of off-road use, Camburg Engineering products have no implied or expressed warranty. Camburg Engineering products and components are designed and manufactured for off-road use only. Always inspect your suspension after off-roading and at your routine service intervals. Use of products sold by Camburg Engineering is at the consumer's own risk. Proper installation and proper use of all products must be followed for optimal safety and performance. Camburg Engineering does not accept responsibility for improper use, alterations, lack of maintenance/inspection and installation of any products. Installing most suspension products will raise the center of gravity of the vehicle and can increase the susceptibility to a rollover and alter the handling characteristics. Camburg Engineering products may void the vehicle's warranty; check with your local dealer. The loss of use of the product, loss of time, inconvenience, removal, shipping costs, commercial loss or consequential damages are not covered. Camburg Engineering reserves the right to change the design, material or specifications of any product without assuming any obligation to modify any product previously manufactured and without prior notice. Every effort has been made to avoid printing errors and specifications. By purchasing, installing and/or using these products you are accepting these stated conditions and accept all liability and responsibility.