

HDRB-RZRTS-SBI-B

79-15093

**Polaris RZR Turbo S
HD Apexx Lower Radius Bar Kit**

HDRB-RZRTS-1-B-SBI

79-15096

**Polaris RZR Turbo S
HD Apexx Upper Radius Bar Kit**

HL

HIGHLIFTER

SEIZMIK


FALCON RIDGE



sales@highlifter.com



800-699-0947 | 8:00am - 5:00pm CST



7455 Atkinson Drive, Shreveport, LA 71129



www.highlifter.com

Parts Available For These Popular Brands and Others

POLARIS

can-am



HONDA

Kawasaki

 **YAMAHA**

PRODUCT DISCLAIMER

The installation of products sold or manufactured by High Lifter Products, Inc. including, but not limited to suspension components such as lift kits, gear reduction lifts, frame stiffener kits, snorkels, and tires that exceed the original specifications for the vehicle, may change the vehicle's center of gravity and handling characteristics both on- and off-road. You are aware that the installation of tires that are larger than original vehicle specifications may reduce the effectiveness of the braking system. Use of these products may place added stress to the original factory vehicle components which could cause them to weaken or possibly fail.

Products sold or manufactured by High Lifter Products, Inc. are intended for off-road use only. Operation of a vehicle modified with these products on a road could result in serious bodily injury or death, and such operation may violate the laws of your state or municipality. You agree to operate your vehicle exclusively in the manner intended by the vehicle manufacturer. You agree that failure to safely and reasonably operate your vehicle could result in serious bodily injury or death, and that, as a result of installation of this product(s) to your vehicle, extreme care must be taken to prevent vehicle rollover or loss of control, which may be more likely to occur as a result of said modifications. You will avoid unsafe maneuvers, including sudden sharp turns or other abrupt maneuvers, which could make a vehicular accident more likely. You understand that High Lifter Products, Inc. is not responsible or liable for any damages or any injuries to yourself or your passengers that could occur upon possible accidents due to driver error, incorrect installations, bad judgment, incompatibility with other aftermarket accessories or natural disasters to the fullest extent allowable by law. You will have all vehicle occupants fasten seatbelts, if equipped, and wear proper safety equipment, such as DOT approved helmet and eye protection prior to operating the vehicle. You understand and acknowledge that failure to wear proper safety equipment may increase the risk of serious bodily injury or death to yourself and any passengers.

Proper installation of products sold or manufactured by High Lifter Products, Inc. requires knowledge of the factory recommended procedures for removal and installation of original equipment components. Installation of these products without proper knowledge and experience may affect the performance of these components and the safety of the vehicle and cause serious bodily injury or death. It is strongly recommended that a certified mechanic familiar with the installation of similar components perform the product(s) installation.

Prior to installing any products sold or manufactured by High Lifter Products, Inc., you will perform or cause to be performed an inspection of their vehicle to confirm its condition is suitable for the installation of these products. A proper inspection of the vehicle includes confirmation that the vehicle has not been in a collision and is free of corrosion. If the vehicle is suspected to have been in a collision or misused, or is otherwise unsuitable for modification, you will not install the product(s). You will continue to inspect the vehicle prior to each use to confirm its condition is suitable for its intended use, and you acknowledge that the failure to do so may result in serious bodily injury or death, as well as damage to the vehicle itself.

You will install any warning labels provided with the product so it may be prominently seen by yourself and all passengers. You will notify all passengers of the modifications performed to your vehicle prior to operation.

Insurance companies may handle coverage of a modified vehicle differently. Please check with your insurance carrier prior to modifying the vehicle to ensure your coverage remains sufficient.

Installation of this product(s) may void your vehicle warranty. If this is a concern, please check with the manufacturer or dealer before purchase or installation of this product(s).

High Lifter Products, Inc., 7455 Atkinson Drive, Shreveport, LA 71129 - Phone: 1-800-699-0947

HIGHLIFTER

PARTS DIAGRAM

UPPER RADIUS BARS (HDRB-RZRTS-1-B-SBI) 79-15096



79-11953
7/8 Heim
Bushings (4ea)



54-61001
12mm x 80mm
Hex Bolt (2ea)



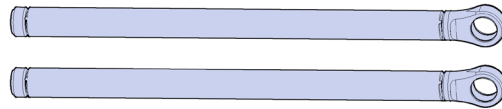
54-96044
12mm Lock
Nut (2ea)



54-61027
12mm Flat
Washer (2ea)



73-13005
Spherical Bearing
(2ea)



79-14519
Upper Radius
Bars (1ea)



73-10077
C-Clip (4ea)



73-12960
Tapered Bushing
(4ea)



73-12790
Inner Cone
(4ea)



73-10788
Upper Radius Spacer
(1ea)



79-12001
7/8-14 Heim
Joint (2ea)



54-60883
7/8-14 Jam
Nut (2ea)

LOWER RADIUS BARS (HDRB-RZRTS-SBI-B) 79-15093



79-11953
7/8 Heim
Bushings (4ea)



54-61001
12mm x 80mm
Hex Bolt (2ea)



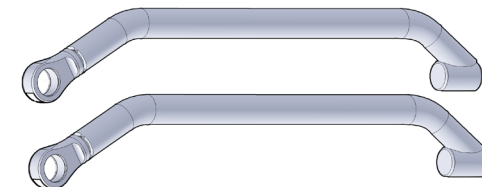
54-96044
12mm Lock
Nut (2ea)



54-61027
12mm Flat
Washer (2ea)



73-13005
Spherical Bearing
(2ea)



79-14522
Lower Radius
Bars (1ea)



73-10077
C-Clip (4ea)



13-12960
Tapered Bushing
(4ea)



73-12790
Inner Cone
(4ea)



73-10801
Lower Radius
Spacer (2ea)

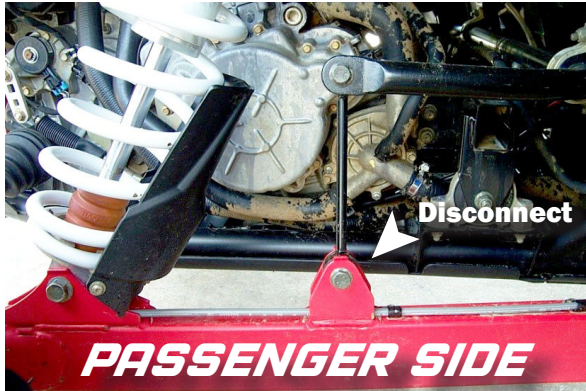


79-12001
7/8-14 Heim Joint
(2ea)



54-60883
7/8-14 Jam
Nut (2ea)

1



Disconnect the sway bar link **BEFORE** jacking up the vehicle.

KEEP ALL FACTORY HARDWARE.

2



DRIVER SIDE

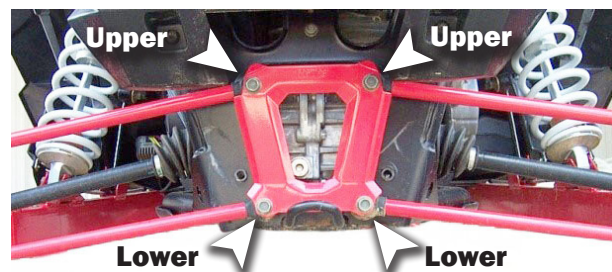
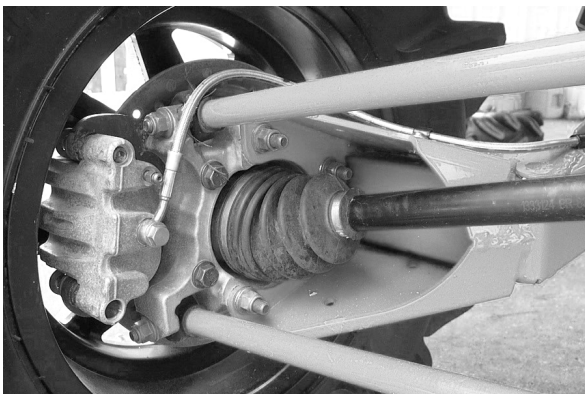
! KEEP ALL FACTORY HARDWARE.

Place **jack** under the **FRONT center** of the RZR and lift until the weight is off the suspension. Ensure that the vehicle is properly secured.

ONCE LIFTED, USE JACK STANDS ON EACH SIDE OF THE UNIT'S FRAME TO PROPERLY SECURE IT.

Remove the front wheels.

3

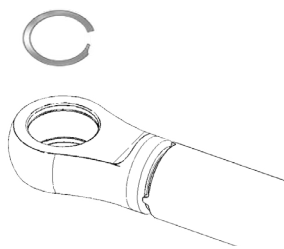
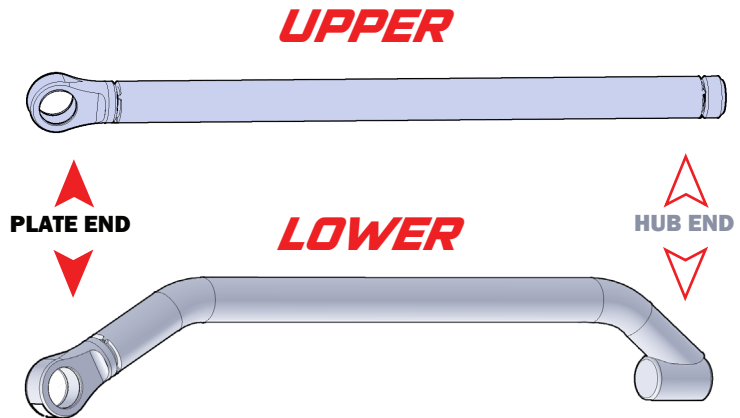


Disconnect the **upper** and/or **lower** factory radius bars, depending on which bars correspond with your new kit. This must be done at the **frame** and the **hub**.

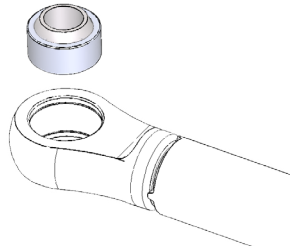
4 RADIUS BAR

Assemble the new radius bars.

Note: The steps for the upper and lower bars are the same.

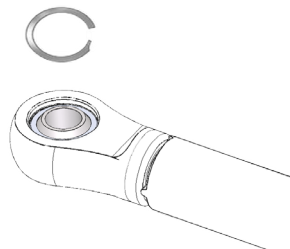


Insert a **c-clip (73-10077)** into one side of the bar, on the plate end.



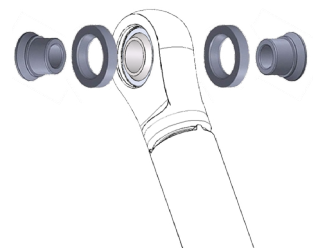
Insert **spherical bearing (73-13005)**. Use a socket with the same diameter as the outer race to secure.

Note: For ease of install, apply grease to outer race.



Insert a **c-clip** over the spherical bearing.

Note: Make sure the c-clip groove is clean. Use a fine point to clear any debris.

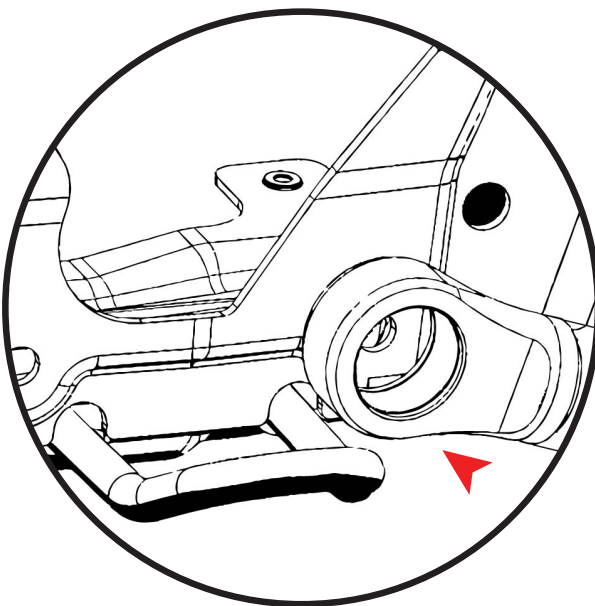


Insert the **alignment cone (73-12790)** into **bushing (73-12960)**. Insert this assembly through the spherical bearing.

CLEARANCE CHECK

Lower Radius Bar

5 LOWER RADIUS BAR ONLY



HITCH & RADIUS BAR CLEARANCE

BEFORE INSTALLING THE RADIUS BAR TO THE FRAME YOU WILL NEED TO CHECK THE CLEARANCE.

Your tow hitch may become bent from use over time. This can cause clearance issues when fitting the new radius bar, which has a larger inner bung.

If your tow hitch is bent upward, it will likely need to be bent back down to meet tolerances.

6 FRAME SPACERS

FRAME AND FRAME PLATE WILL
NEED TO BE DRILLED OUT TO
12MM FOR:

RZR STANDARD MODEL 2014-2017
RZR HIGH LIFTER EDITION 2015-2016

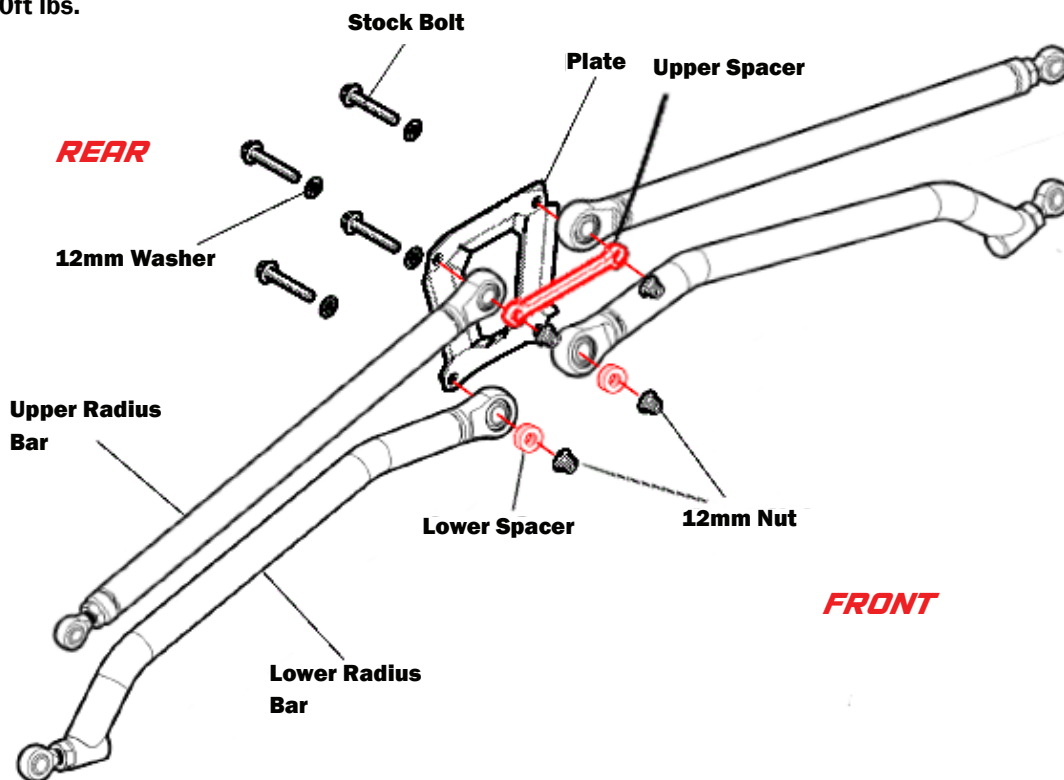
Attach the upper radius bars to the frame using the upper radius spacer (73-10788) or If you have a lower kit use the lower radius spacer (73-10801) for the lower radius bars. Fasten them with the 12x80mm Hex Bolts, 12mm Flat Washers, and 12mm Lock Nuts provided in the kit. Torque to 90ft lbs.



Upper (73-10788)

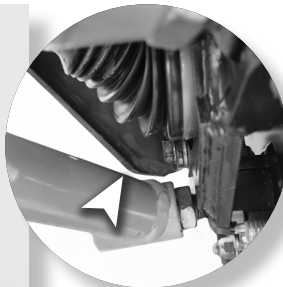
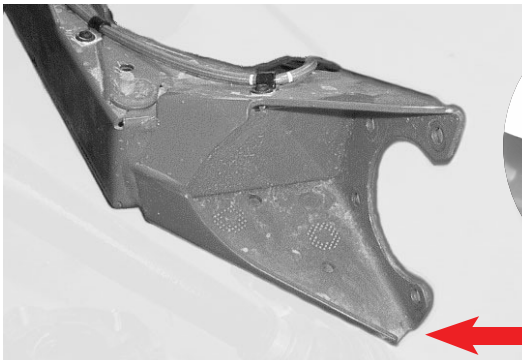


Lower (73-10801)



TRAILING ARM

Modification



LOWER RADIUS BAR ONLY

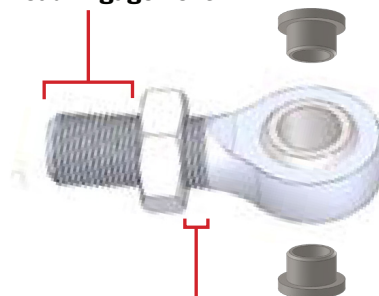
You may need to trim the trailing arm to gain the desired clearance for the lower radius bar.

← TRIM TIP OF TRAILING ARM.

7 HEIM ADAPTERS

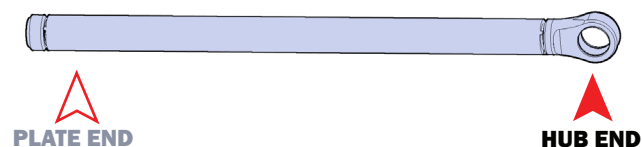
Insert the two Heim adapters (79-11953) into the eyelet of the Heim joint (79-12001).

1" Thread Engagement



3/4" of Adjustment

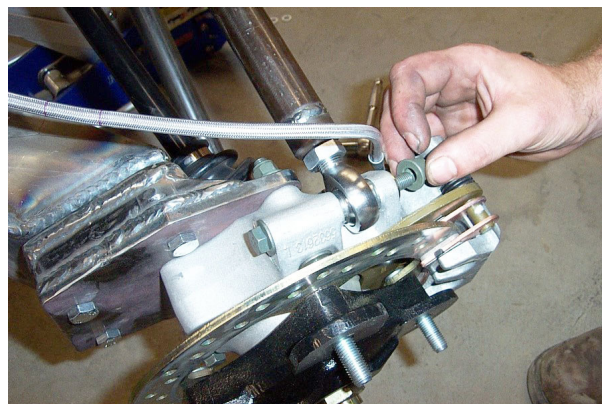
UPPER



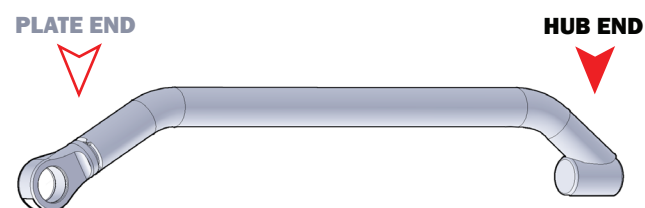
Measure the distance of the **stock radius bar** from each center hole to the other, then adjust the new **HD bar** to that length.

Thread the **jam nut** onto the **heim joint (79-12001)**. Leave **1"** of thread from the **jam nut** to the end of the **Heim joint**. Screw the **Heim joint** into the **radius bar**. This should allow **3/4"** of adjustment.

Attach the **upper radius bar** to the **knuckle assembly** using the factory hardware.

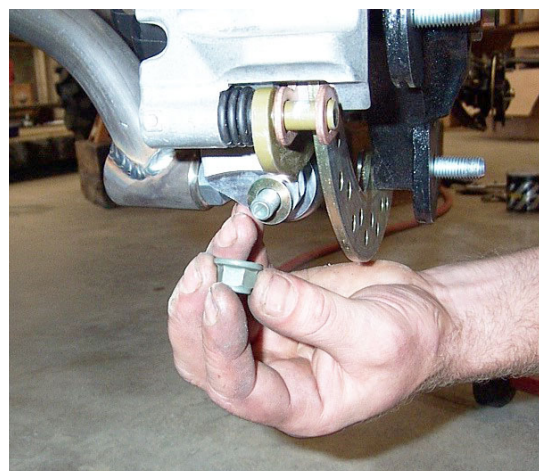


LOWER

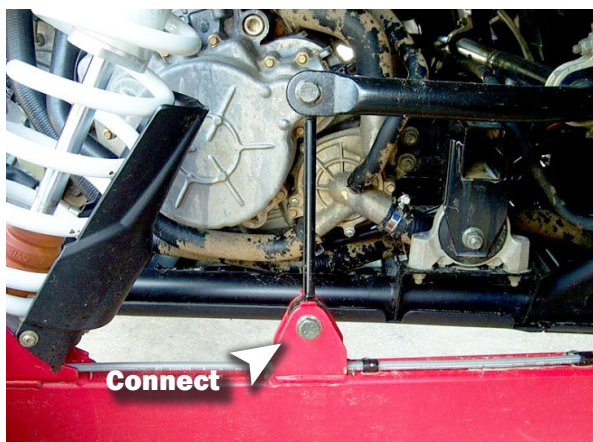


THE STEPS WILL BE THE SAME AS ABOVE.

Attach the **lower bar** to the **knuckle assembly** using the factory hardware.



8



Reconnect the sway bar.

REPEAT STEPS ON OPPOSITE SIDE.

9



Once you have repeated the steps on the opposite side, reinstall the wheels. Carefully lower the jack. Inspect vehicle to make sure all components are secure.

TORQUE ALL BOLTS TO FACTORY SPEC.



HIGH LIFTER LIMITED LIFETIME WARRANTY

High Lifter offers a Limited Lifetime Warranty to the original purchaser that our product shall be free from defects in material and workmanship for the life of the product if utilized in accordance with the manufacturer's instructions for installation and operation of said products.

LIMITED LIFETIME WARRANTY EXTENDS TO THE FOLLOWING PRODUCT LINES:

- **Lift Kits (Signature, Standard and Big Lifts)**
- **Control Arms**
- **Trailing Arms**
- **Radiator Relocation Kits**
- **Portal Gear Lifts**
- **Wheel Spacers**
- **Tow Hooks**
- **Control Arm Link Kits**

Damages to vehicle or any other object during the installation, use, or removal of High Lifter products are not covered under this warranty. Normal wear items included with any of the products covered under this Limited Lifetime Warranty are excluded from coverage. These items include, but are not limited to heim joints, tie rods, bearings, bushings, seals, gaskets, zinc plating, painted and powder coated finishes. Other exclusions of coverage under this warranty include, but are not limited to: damage or product failure due to improper installation, lack of maintenance, product modification, abuse, collision or use on vehicles for which product was not designed, repairs performed by anyone other than approved High Lifter personnel or made using non-High Lifter components. This warranty is valid for the original purchaser only and is non-transferable. High Lifter reserves the right to inspect any product before determining if the claim is valid and covered under this warranty. Claims determined to be caused by reasons other than a manufacturer defect will be rejected and an estimate for repair or cost of a replacement product if a repair is not possible, will be provided.

This warranty is exclusive and is in lieu of any implied warranty of merchantability, fitness for a particular purpose or other warranty of quality, whether express or implied, except the warranty of title.

WARRANTY PROCESSING

If you suspect your product is defective, **DO NOT** disassemble the product to determine the cause without prior approval as it may void your warranty status. This is especially true with our Portal Gear Lift. To begin the claim process, please e-mail our warranty team at warranty_care@highlifter.com and include the following in the e-mail:

- ☐ Your full name, address and contact phone number.
- ☐ The year, make and model of your vehicle
- ☐ The part number of the product
- ☐ Photos of the product installed, and vehicle product is installed on
- ☐ Proof of Purchase (Required for all warranty claims and you must be the original purchaser)

Once a claim is created, you will receive a return authorization number (RMA). Write this number on the outside of the box containing your defective product and include it along with your name and contact information inside the box. Product must be returned in the original box or a box of equal strength and packaging. Product sent without an RMA number visible on the outside of the box or sent COD will be refused. Ship your product to the following address:

High Lifter Products, Inc.

Attn: Returns 7455 Atkinson Drive, Shreveport, LA 71129

Once your product is received, we often have your replacement or repaired product shipped back to you within 3-business days of receiving it. Please note that High Lifter is not responsible for shipping charges on product returned for warranty or repair, including duties and fees required by those residing outside the United States.

THANK YOU FOR CHOOSING
HIGH LIFTER

OBTAINING A WARRANTY CLAIM

All returns for warranty must be pre-approved by calling **1.800.699.0947**. After warranty approval has been granted and a Return Merchandise Authorization (RMA) number issued, the product must be received by **HIGH LIFTER PRODUCTS** within **15 calendar days**. The RMA number must be clearly displayed on the return box or the return will be refused. An RMA number does not imply a replacement or refund on any product, but only that we will inspect the product for warranty claims. For orders outside the United States, any fees associated with customs or duties are non-refundable. All claims must be accompanied by the sales receipt detailing date and place of purchase, a written explanation of the problem, a phone number, and e-mail address. **A copy of this receipt must be included with the product submitted for warranty repair or replacement. The purchaser is responsible for any freight charges on a warranty claim or repair service after the warranty expires, including incoming freight to High Lifter and return freight to the purchaser.**

HIGH LIFTER PRODUCTS WARRANTY CLAIM

Name: _____

Product Number: _____

Address: _____

Place of Purchase: _____

Date of Purchase: _____

Phone Number: _____

Reason for Return: _____

E-Mail Address: _____

Reminder – This claim must be accompanied by a copy of the original receipt.

