

## 16-21 TOYOTA 4RUNNER USER GUIDE

LOW BEAM

HIGH BEAM

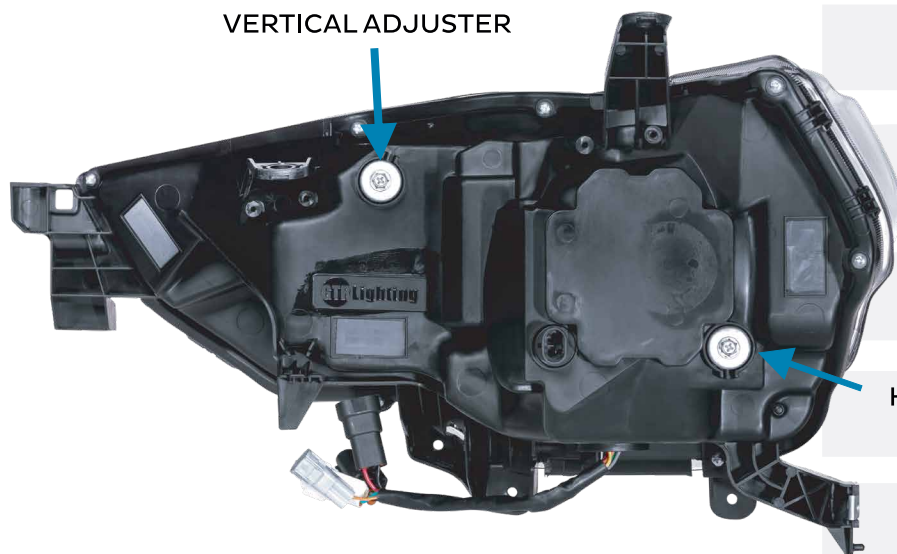
SIDEMARKER

DAYTIME RUNNING LIGHT  
& SEQUENTIAL TURN SIGNAL



VERTICAL ADJUSTER

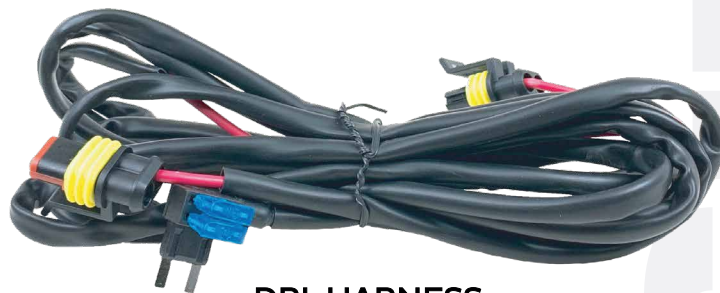
HORIZONTAL ADJUSTER



# TABLE OF CONTENTS

2	REQUIRED TOOLS FOR INSTALL
3	INSTALL PROCESS
11	DAYTIME RUNNING LIGHT FIX
14	ADDITIONAL INFORMATION

## INCLUDED PARTS



DRL HARNESS

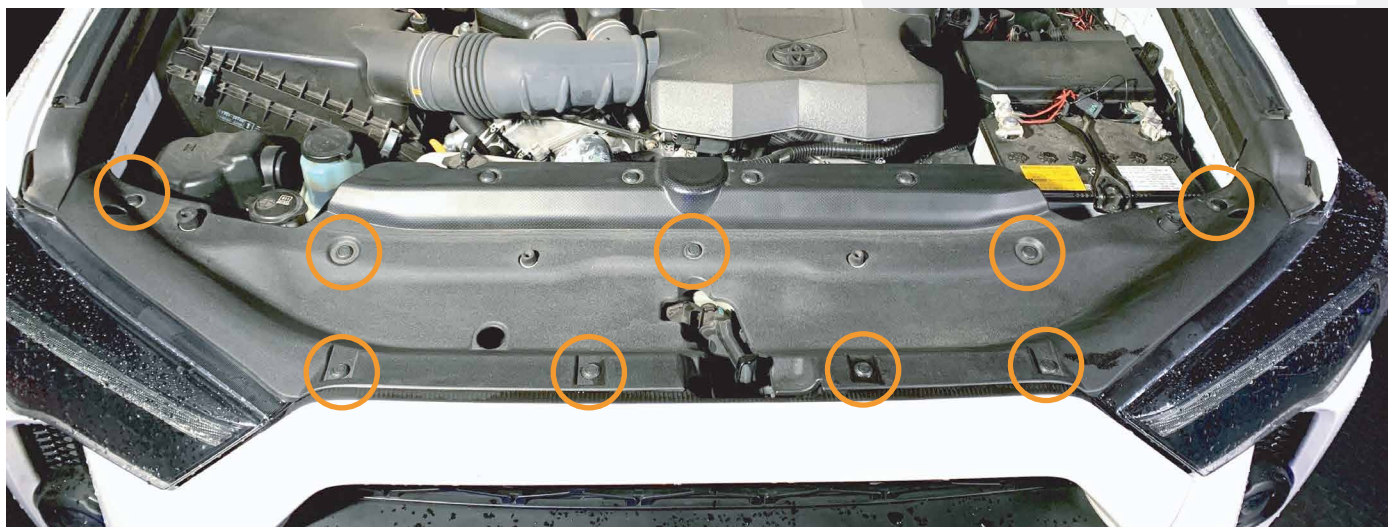
## REQUIRED TOOLS FOR INSTALL

- RATCHET
- 10MM SOCKET
- FLAT HEAD SCREWDRIVER OR TRIM REMOVAL TOOL
- PHILIPS HEAD SCREWDRIVER
- NEEDLE NOSE PLIERS

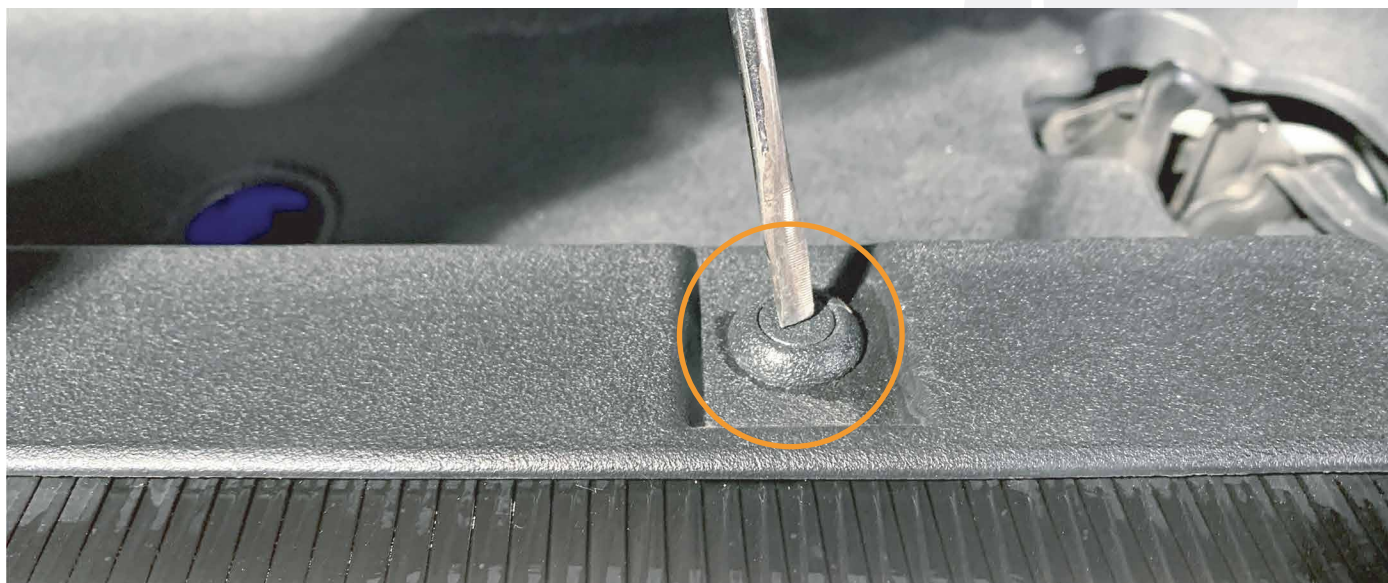
**WARNING:** By reading this document, you agree it is only to be used as an educational guide. GTR Lighting nor its dealers make guarantees on any finished results, nor are they to be held responsible for any damage, misuse, or personal injuries. If you are unable to clearly understand and adapt the information below, professional installation is recommended.

## INSTALL PROCESS

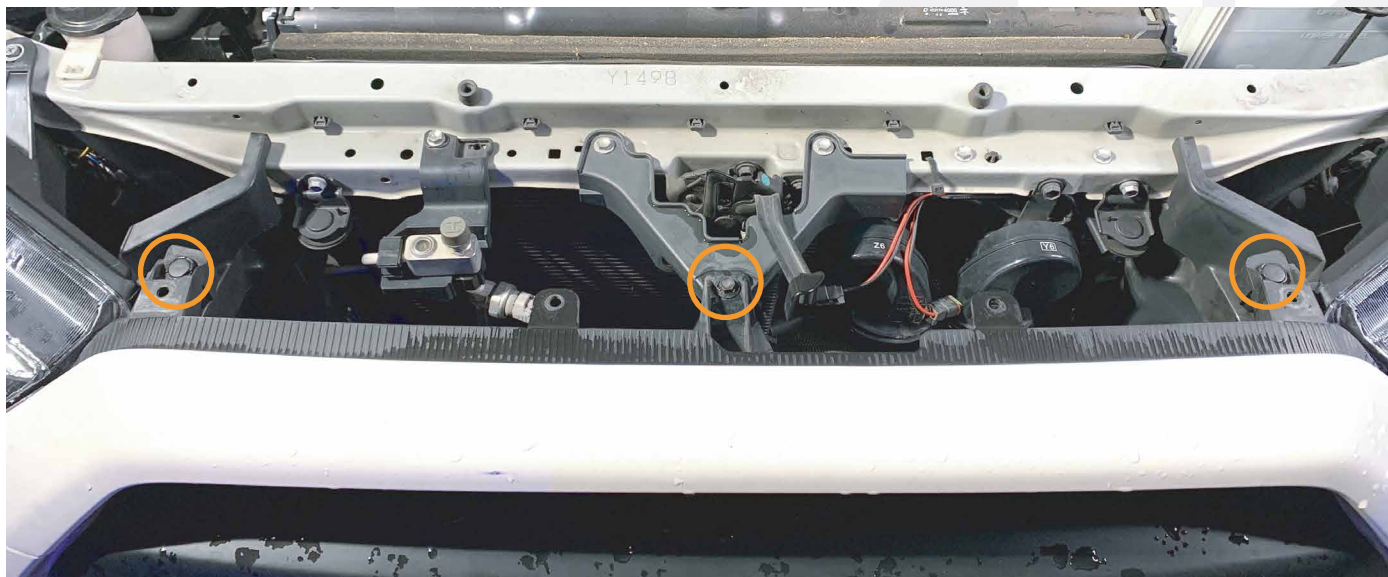
1. Remove 9 push tab clips that secure the radiator cover.



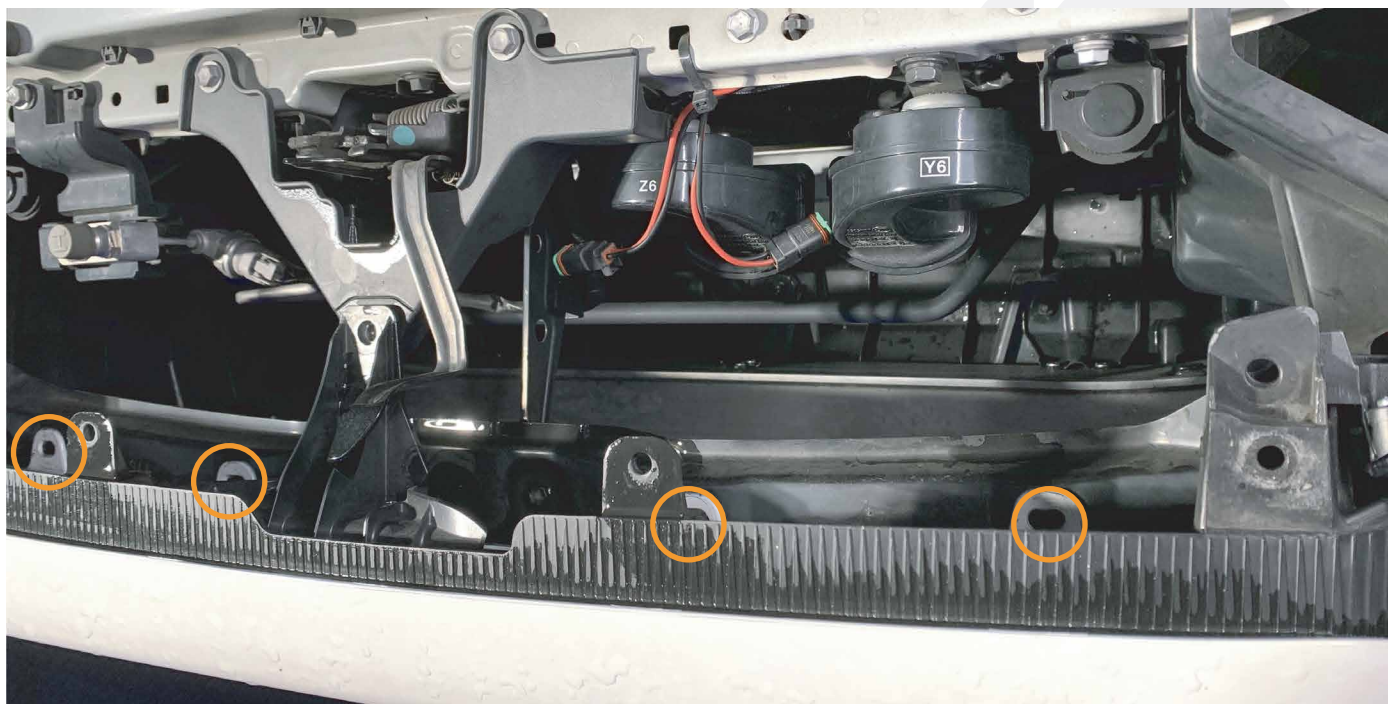
- Release these clips by pushing down the head til you feel a click, then pry the whole clip up and out.



2. Remove 2 push clips and 1 bolt (10MM) securing the grille. To release the clips, simply pry the head of clip up til it reaches it's unlock position, then pry the base of the clip up to remove the whole clip.



3. Remove 4 push clips that secure the top of the bumper.



4. From underneath the vehicle, remove 2 bolts (10MM) holding the center of the bumper.



5. Also underneath the vehicle, remove 2 bolts (10MM) holding each side of the bumper.



6. Remove 3 bolts (10MM) holding the side of the bumper.



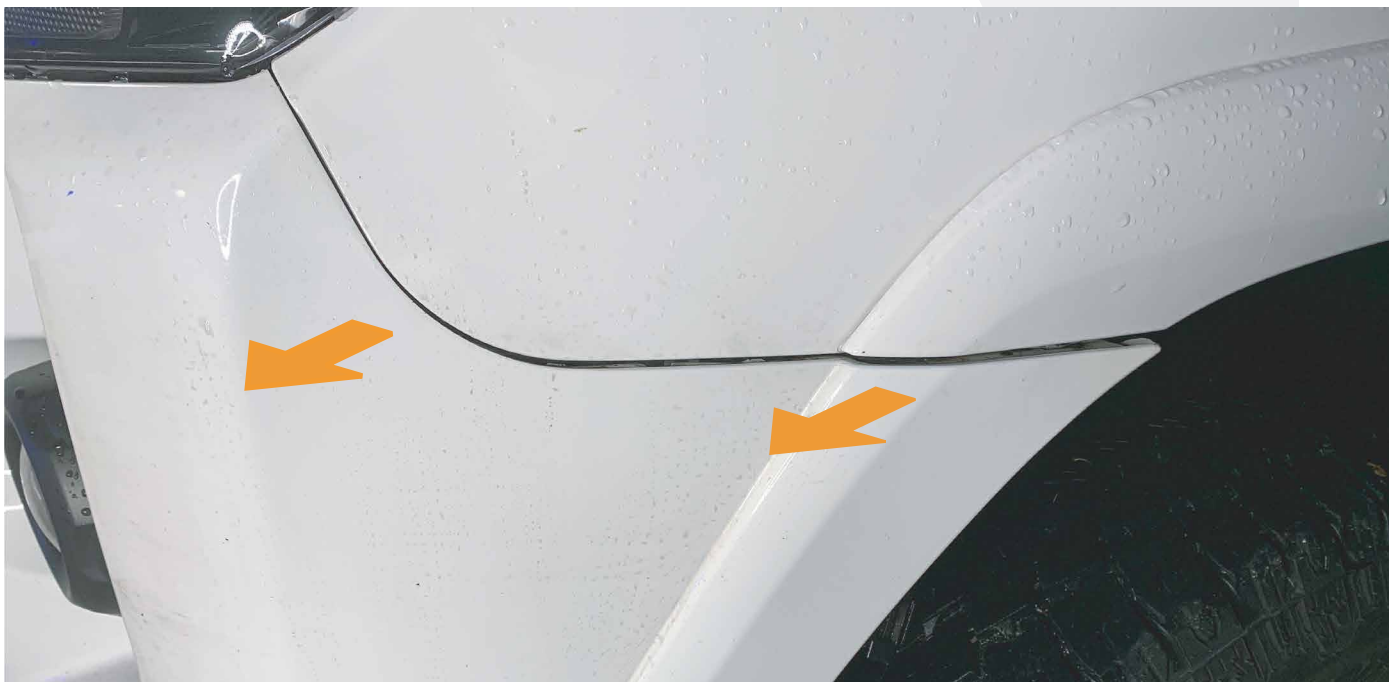
7. Using a flat head screwdriver, pry the 2 fender liner clips away from the bumper.



8. Using a flat head screwdriver, pry the top tab of the bumper up and over the plastic nut.



9. Pull the bumper away from the fender

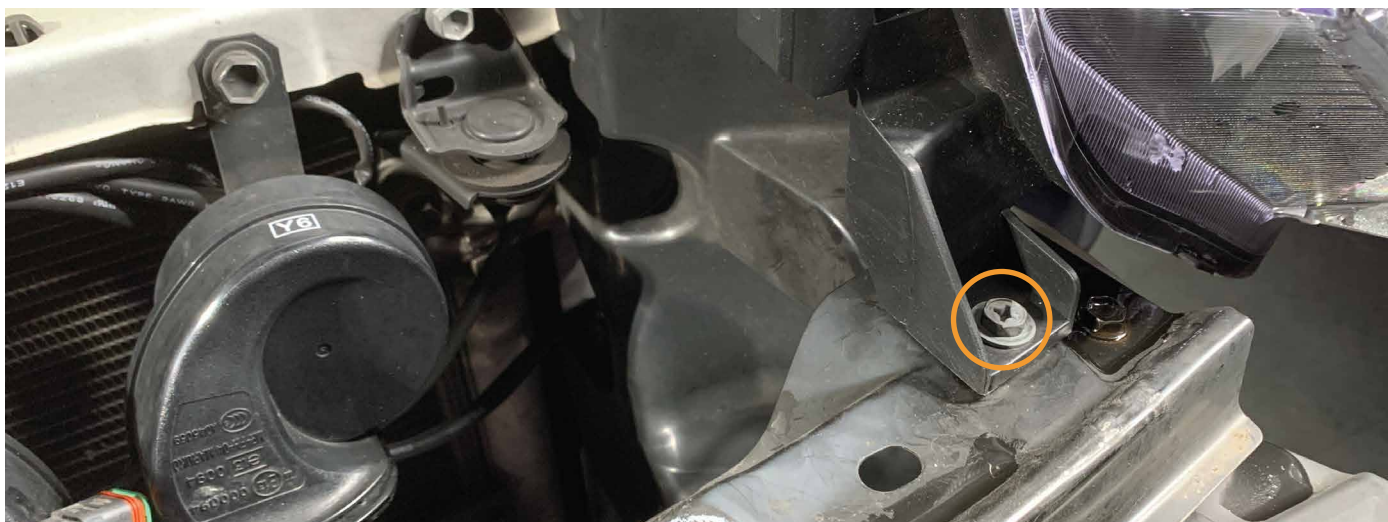


10. Repeat steps 6-9 on the other side of the vehicle.

11. Remove 2 bolts (10MM) holding the top of the headlight.



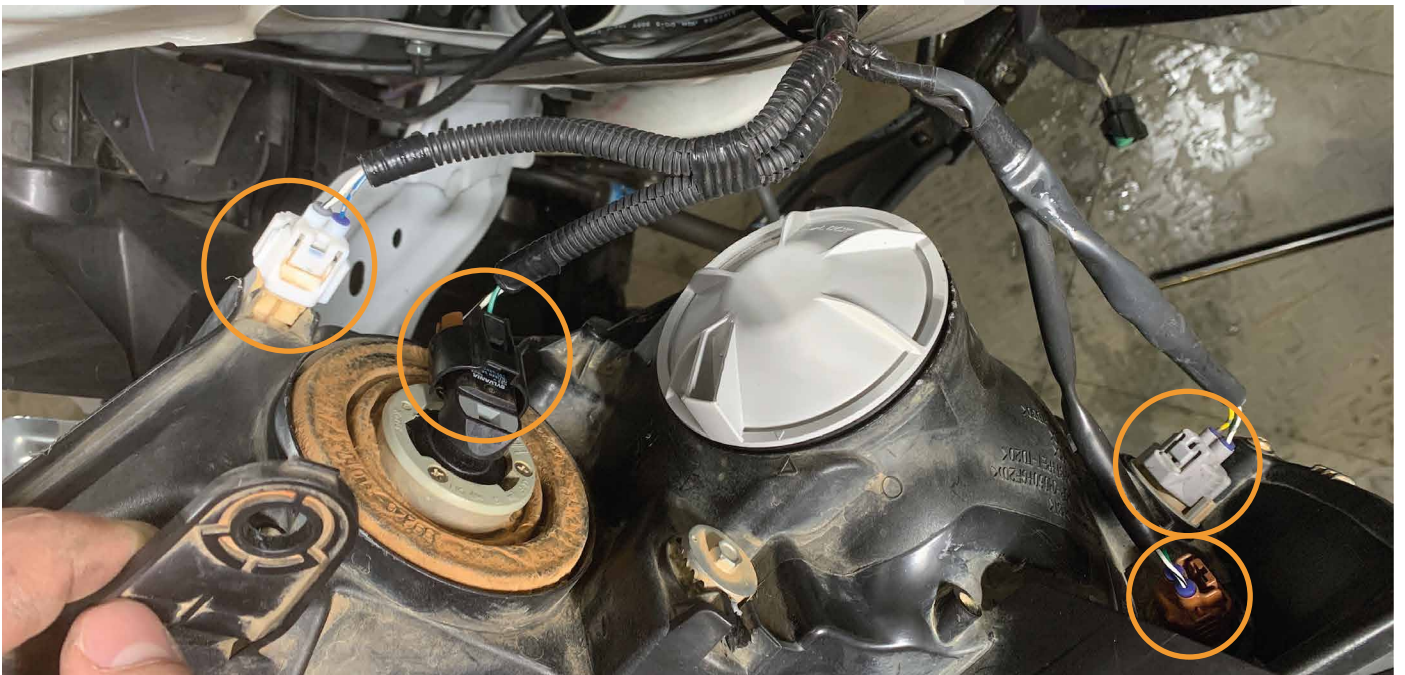
12. Remove 1 bolt (10MM) holding the headlight to the bumper support.



13. Remove 1 bolt (10MM) holding the side of the headlight to the fender.

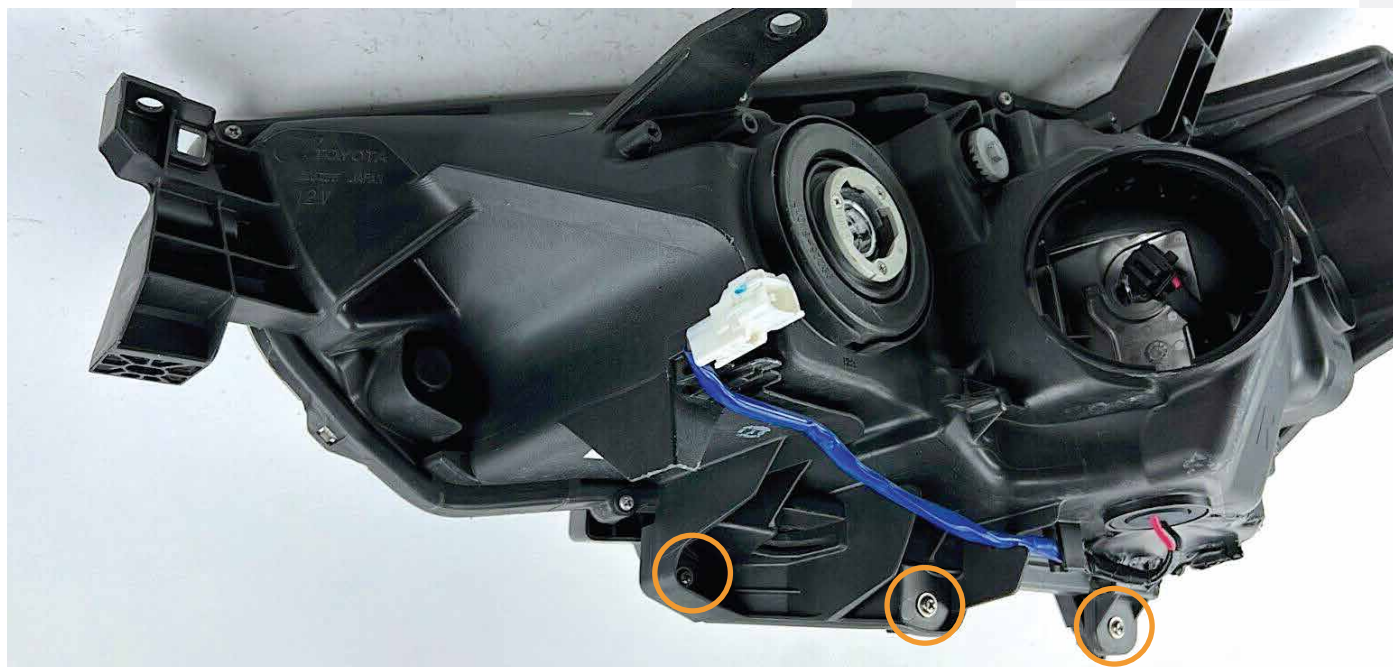


14. Disconnect these 4 headlight connectors and remove the headlight off the vehicle.



15. Repeat steps 11-14 on the other side of the vehicle.

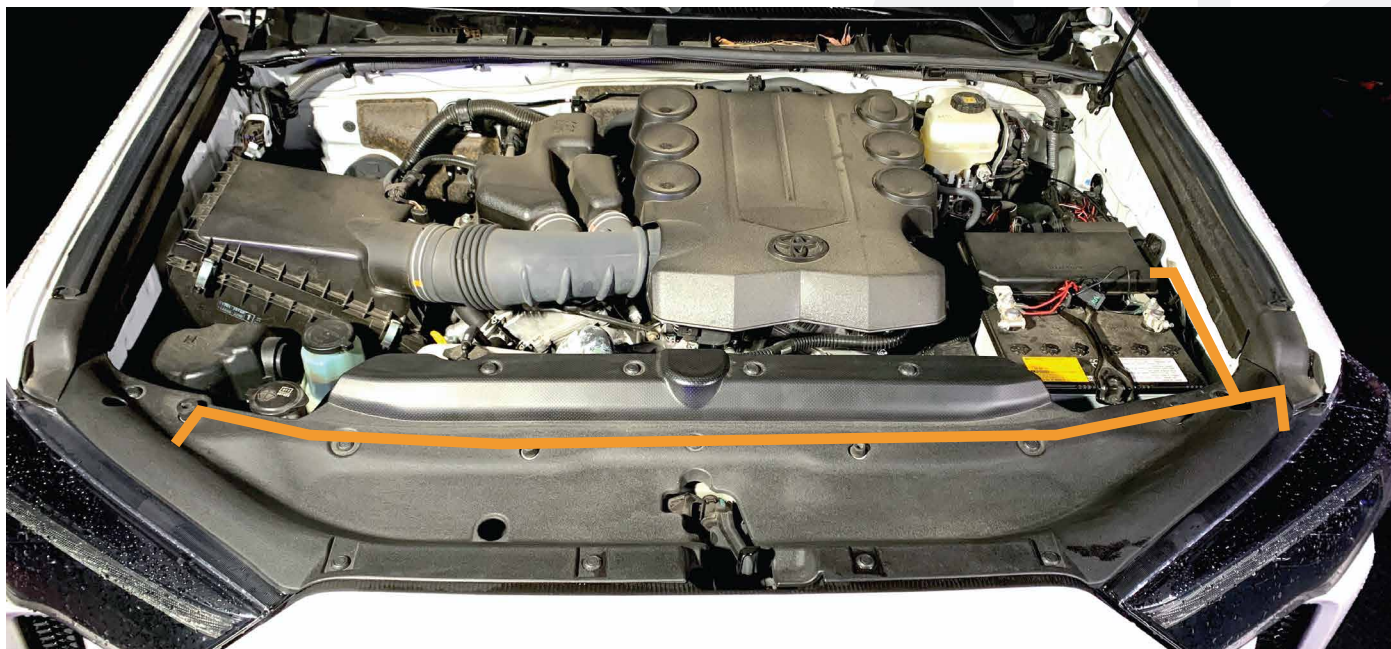
16. Set your oem headlights down. Remove the 3 screws (philips head) and bracket (per headlight). Transfer the brackets and bolts onto your GTR Lighting headlights.



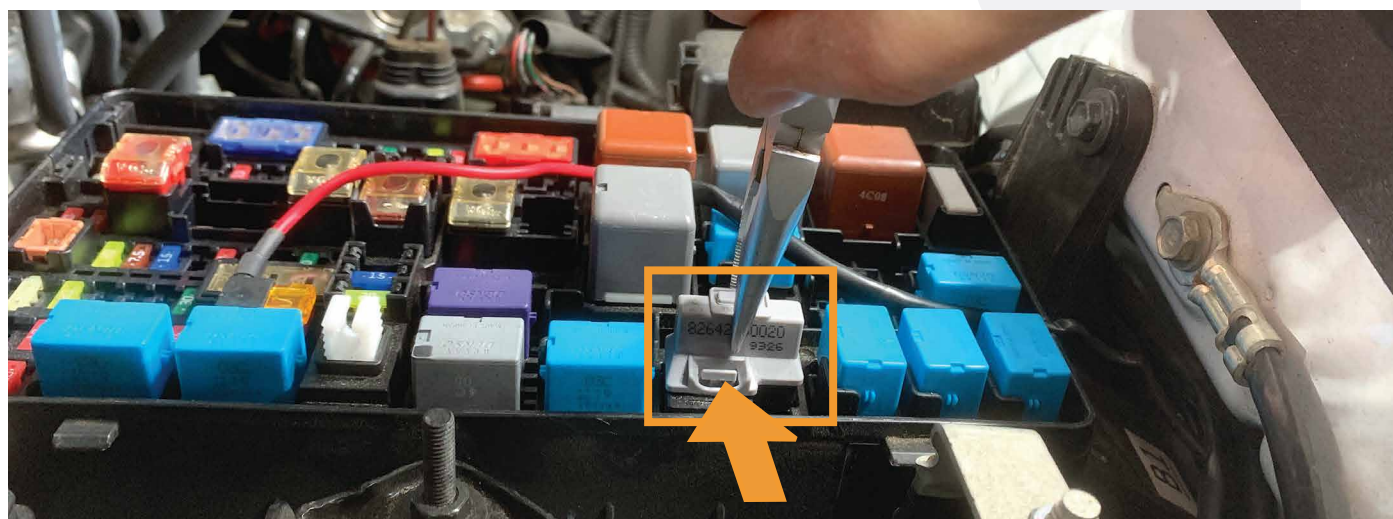
17. Locate the fuse box, behind the battery, on the driver side of the engine bay. Remove this 10A fuse labeled "INJ". Replace this fuse with the included DRL harness fuse tap.



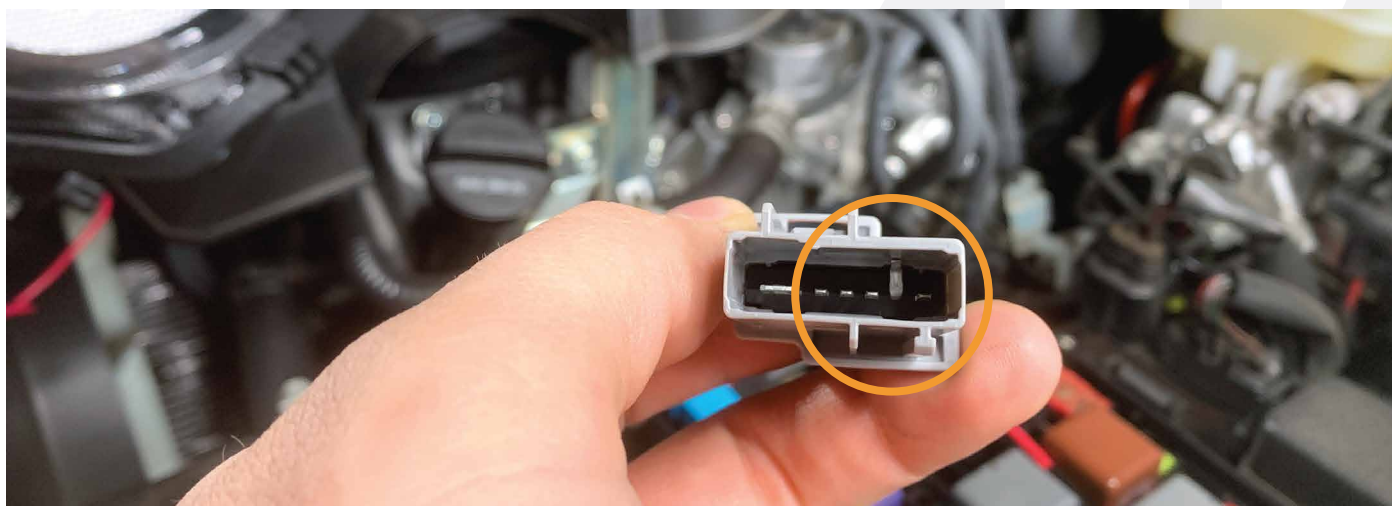
18. Run the short part of the DRL harness to the driver side headlight. Run the longer side to the passenger side headlight area.



19. Also in your fuse box, remove this relay. To remove it push in the tab and pull the relay up.



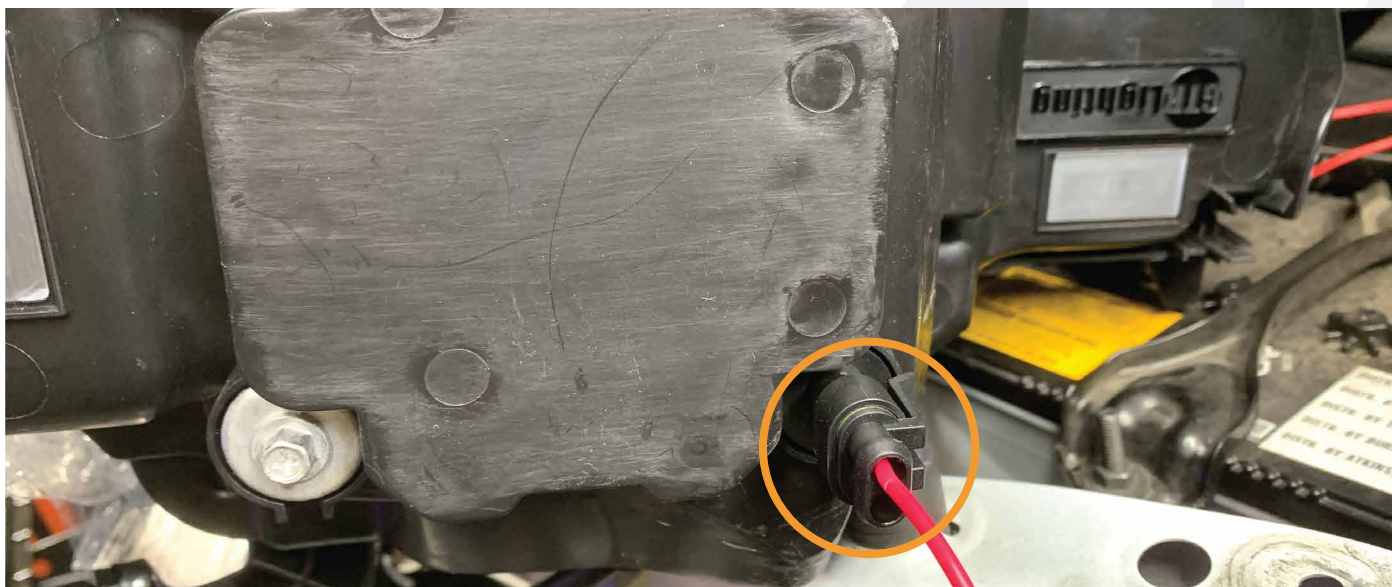
20. Using a pair of needle nose pliers, bend this pin down in the relay. Reinstall the relay into the fuse box.



21. Grab one of your GTR Lighting headlights and plug in these 4 connectors to your factory vehicle harness.



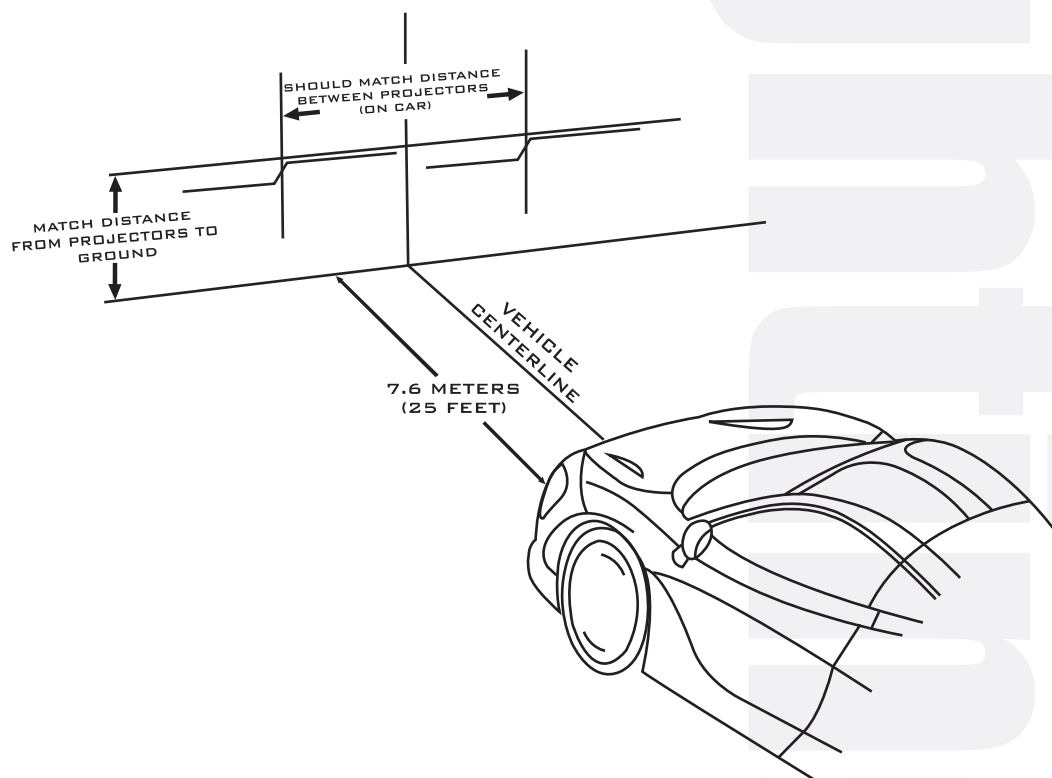
22. Also plug in the DRL harness connector into this plug on the back of the headlight.



23. Plug in the other side headlight and turn the vehicle "ON" to test all of the headlight functions.

24. Reinstall the headlights into the factory position and reassemble the vehicle.

25. Align your headlights to the diagram below.



# CONDENSATION VS WATER INGRESS



As the climate changes, condensation can form inside the headlights. This is normal and will evaporate over time.



This is an image of actual water ingress. Consult your dealer for warranty information and processes.

**IMPORTANT:** If your vehicle is equipped with anything but OEM turn signals (full assemblies, LED bulbs, or otherwise) in the tail lights or elsewhere: You may experience a hyper flash and/or problem with the sequential signal setting on these headlights. This is not a defect in the headlight, and caused by un-matched Impedance with your original vehicle settings.

For assistance, troubleshooting or warranty please either contact your dealer or give GTR Lighting a call at 813-463-0345.

# ENJOY YOUR NEW CARBIDE HEADLIGHTS

