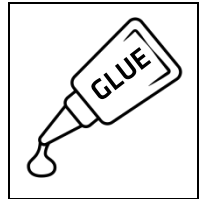


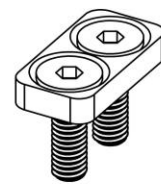
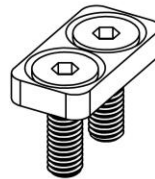
Nut made specifically for this application with elongated thread for enhanced strength.

**WARNING!** If included in set, always use thread adhesive with this type of nut. Tighten the nut to 50Nm / 36ft-lbs. Do not use any impact tools.



Stainless steel sliders provide enlarged contact area with the plate, thus improving overall rigidity. Flat alignment with the plate allows for maximum adjustment range.

**WARNING!** Tighten the bolts to torque specification given on the plate.

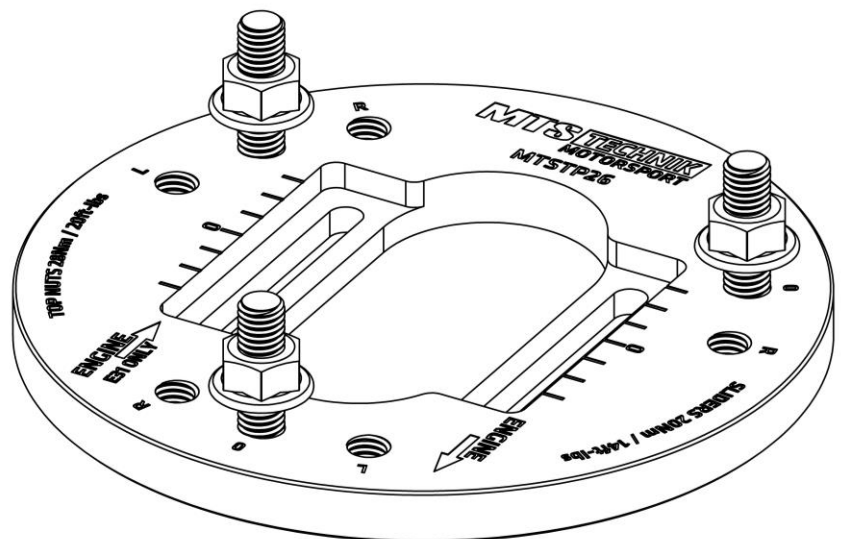


High strength anodized aluminium plate with additional caster correction bolt patterns. Orientation and caster marking ensures easy installation.

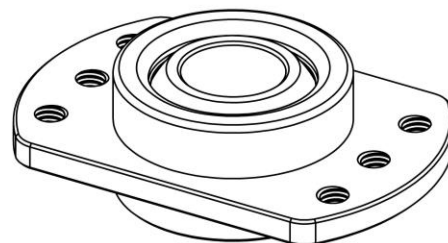
**L marking for LHD driver's side.**

Please turn the page for setup clarification.

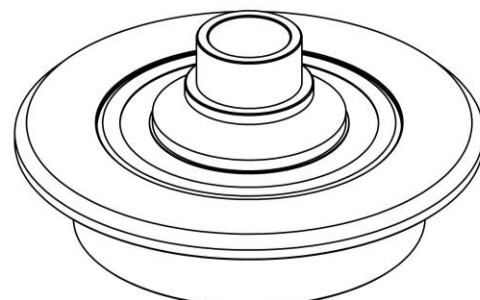
**WARNING!** Tighten the top nuts to torque specification given on the plate. While tightening the nuts hold the bolts still from the bottom.

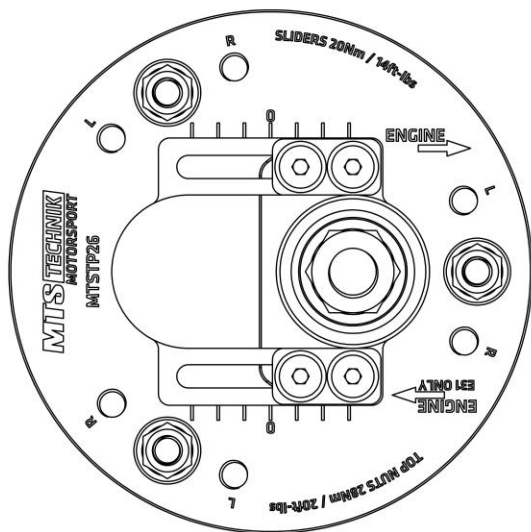


Brand new, preloaded, spherical bearing - developed and tested in extreme conditions by MTSTechnik. Optimal bearing material selection for best corrosion resistance. Proven to withstand thousands of kilometres without any damage.



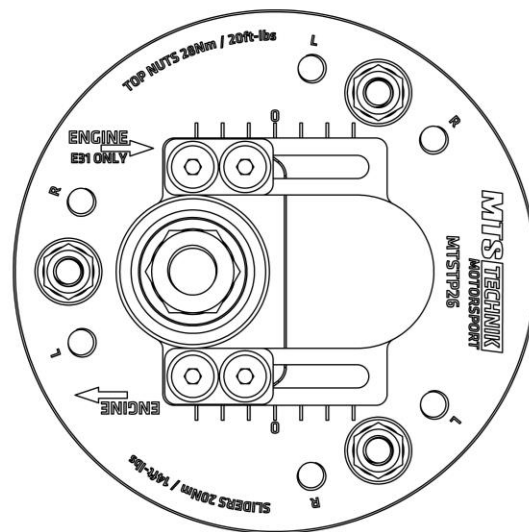
Top spring cap with integrated sealed bearing offers smooth and quiet operation with great reliability. Precise steering without knocks and creaks.



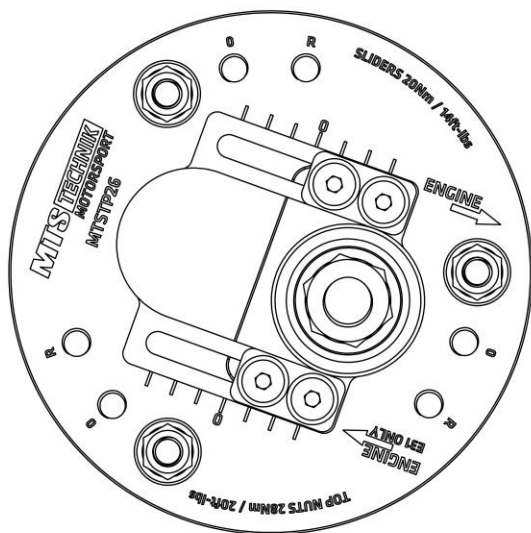


**FULL CAMBER  
OEM CASTER**

**LHD DRIVER'S SIDE**



**LHD PASSENGER'S SIDE**



**FULL CAMBER  
+30' CASTER**

