



BRAND *Chevrolet* **MODEL** *Corvette C7* **YEAR** *2014 and up*
PART NAME *GTX Side Skirt set*
PART NUMBERS *C7-CCC7-GTX-SS-CF* *C7-CCC7-GTX-SS-FRP*
C7-CCC7-GTX-SS-CBF

www.C7carbon.com

C7 CARBON - INSTALLATION GUIDE

BRAND Chevrolet MODEL Corvette C7

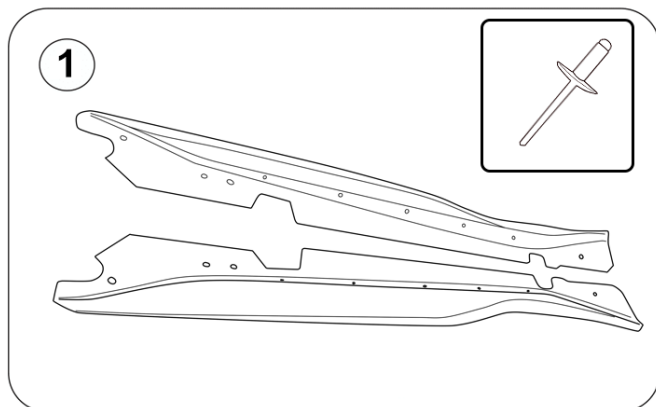
YEAR 2014 and up

PART NAME GTX Side Skirt set

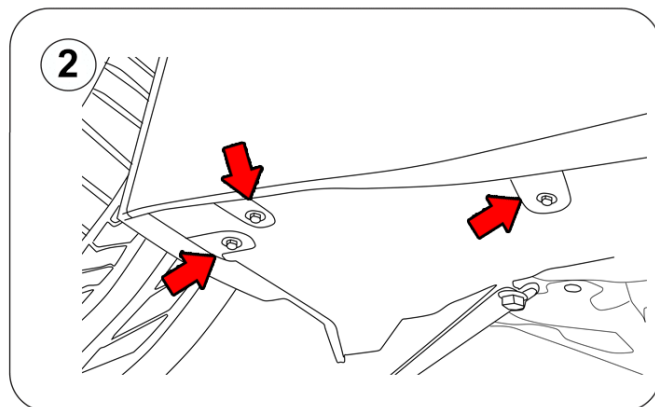
PART NUMBERS C7-CCC7-GTX-SS-CF

C7-CCC7-GTX-SS-FRP

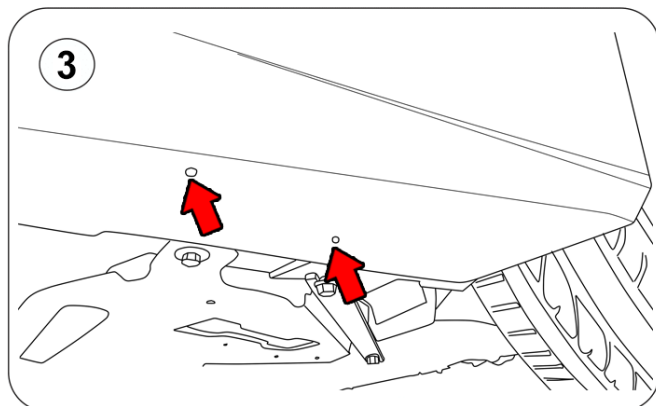
C7-CCC7-GTX-SS-CBF



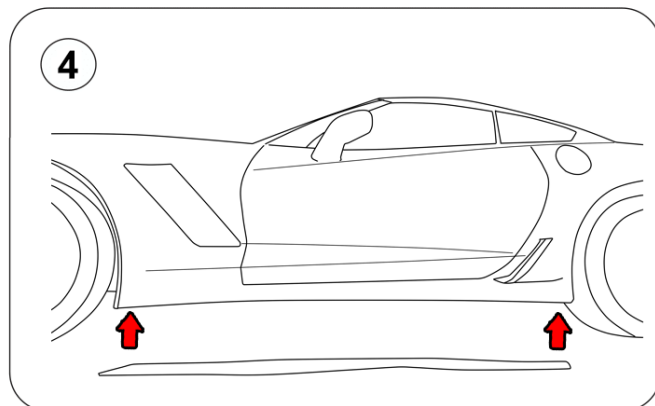
1.- Parts received in this package:
Driver and passenger side sideskirts.
24x Aluminum Pop rivets.



2.- Remove the 3 size 7 bolts located underneath the front fender.



3.- Remove the 2 bolts located at the rear of the rocker panel.



4.- Place the side skirt, matching up the side skirt's pre-drilled holes with the vehicle's factory mounting points.

NOTE: for additional grip, pop rivets can be used on the extra pre-drilled holes on the side skirts. Drilling on the vehicle's rocker panel is required for this step.

NOTE-2: Double sided tape [not included] can be used instead of pop rivets to help carry out the installation without having to drill on the vehicle's rocker panel.

www.C7carbon.com

Page 1 of 2

PLEASE NOTE: All parts must be prepped and installed by a professional body shop that has experience working with carbon fiber and fiberglass car parts including but not limited to cutting, filling, sanding, and shaving. Extra fees can be incurred for proper fitment. All parts are sold for off-road and show use only. We do not accept liability for injuries resulting from customization of buyer/owners car, this is done at their own risk. You, as the buyer, are responsible for complying with any/all local, state, and federal laws.

C7 CARBON - INSTALLATION GUIDE

BRAND Chevrolet MODEL Corvette C7

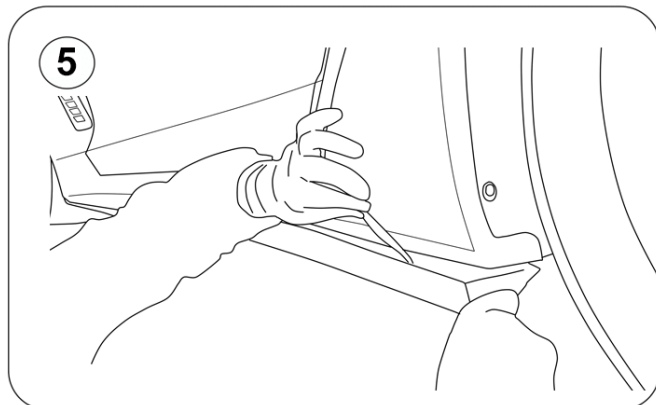
YEAR 2014 and up

PART NAME GTX Side Skirt set

PART NUMBERS C7-CCC7-GTX-SS-CF

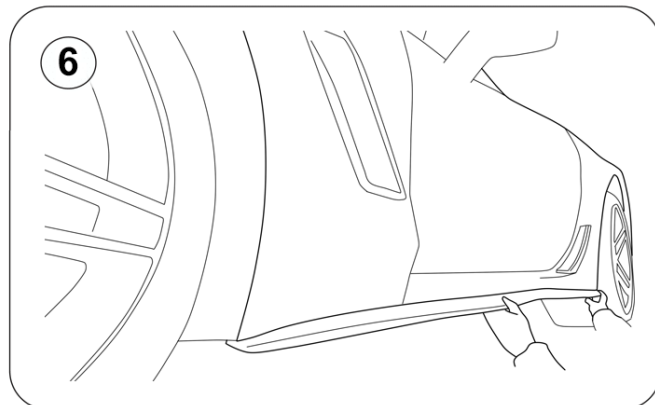
C7-CCC7-GTX-SS-FRP

C7-CCC7-GTX-SS-CBF



5.- If double sided tape is being used as an additional gripping method. Make sure to stick the side skirt on to the rocker panel before fully tightening the bolts at the bottom.

NOTE: If using pop rivets, these can be used after the side skirts are fully bolted on to the vehicle. The side skirt's extra pre-drilled holes can be used as templates for the drilling points on the rocker panel.



6.- Bolt the side skirt, using the factory bolts previously removed.

NOTE FOR Z06/GS MODELS: the last bolt at the rear of the rocker panel may sit just outside the side skirt's flange. A washer can be added to that same bolt to be able to catch up to the flange.