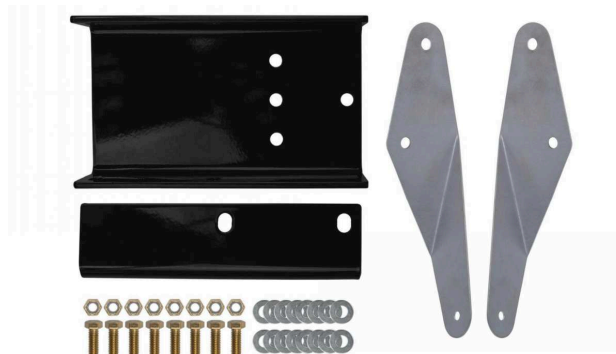


# INSTALLATION INSTRUCTIONS



73-87 Chevy C10

## Tank Relocation Kit

PART NUMBER (PN): 6429

### Technical Support

We strive to provide the utmost pre- and post-sales support for our products. Whether you just need upgrade advice, or assistance in adjusting or installing a product, our experienced support staff is always ready to help optimize your UMI product.

### CHAT WITH A UMI PROFESSIONAL TODAY

Need installation advice or clarification on the instructions? Scan the QR code (right) to chat directly with a UMI Professional or use the contact information provided to talk to customer service.

*Note: UMI social media accounts do not respond to customer service questions.*



### CONTACT CUSTOMER SERVICE

**Hours:** M-F 8:00-4:30 (EST)

**Email:** [support@umiperformance.com](mailto:support@umiperformance.com)

**Call:** +1 (814) 343-6315

**Address:** 509 Hemlock Street  
Philipsburg, PA 16866

### SOCIAL MEDIA

#umiequipped #umiperformance

@umiperformanceinc

### Included Parts

Part Description	Quantity	PN
Hardware kit	1 kit	6426-BK
Cross Member Mount	2 pieces	6416A
Hole Template - Driver	1 piece	6429DR
Hole Template - Passenger	1 piece	6429PA

### Tools Needed



**SOCKET**



**WRENCH**



**RATCHET**

## INSTALLATION INSTRUCTION

### DISCLAIMER

UMI Performance shall not be held liable for any injuries or damages resulting from the improper installation of this product. It is the sole responsibility of the user to ensure that the product is installed correctly and in accordance with all applicable laws, codes, and regulations. The user assumes all risk and liability for any injuries or damages that may arise from the improper installation of this product. It is important to follow these steps carefully and use the proper tools to avoid damaging the vehicle or causing injury to yourself. If you are uncertain about any part of the installation process, it is recommended that you seek the assistance of a professional mechanic.

### STEP 1:

Organize and lay out all necessary parts and hardware prior to beginning the installation process. Carefully review the components and tools required to ensure that all necessary items are present. Once confirmed, proceed to disassembly

**STEP 2:** Park the truck on a flat level surface and place the transmission in park.

### STEP 3: Removing the bed and rear bumper.

A) Disconnect fuel filler assembly from bedside. Remove all unwanted debris and contents from the bed of the truck to gain access to the top of the bed rail bolts. Unhook all rear tail light wiring, and remove bed bolts. Also remove the rear bumper.

B) Phone a Few Friends and lift the bed off!

### Step 4: Removing factory crossmember and Spare tire mount

A) Locate and remove your spare tire. Using a 4.5 in grinder, hammer, and punch remove the spare tire crossmember. **(FIG:1)**

B) Move back the frame and remove the rear crossmember using the same method as before. **(Fig:2)**

C) Clean and paint areas of the frame if bare metal is showing to prevent rust.

### Step 5: Install crossmember mounting brackets

A) Locate 6429DR and 6429PA **(FIG:3)**. These are templates to mark the first set of holes used to bolt the crossmember mounting brackets to the frame. Each template uses the hole for the brake line mounting clip to position it. Lay the template on top of the frame like shown in Figure 3, place a bolt through the hole shown and mark the top two holes. Repeat on the opposite side of the frame.

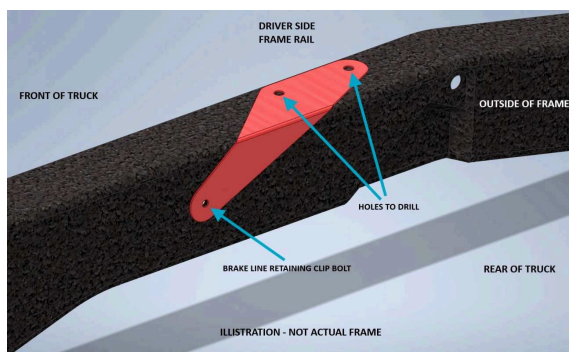


Figure 3: Mark Holes for Drilling

## FIGURES FOR REFERENCE



Figure 1: Spare tire crossmember

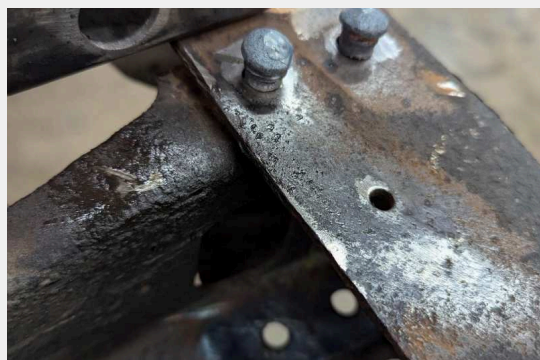


Figure 2: Removing rear crossmember rivets

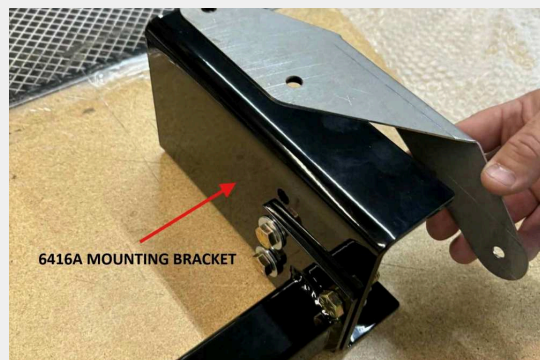


Figure 4A: Installing 6416A Brackets. Shown with 6429PA template to show how 6416A bolts up to drilled holes.

## INSTALLATION INSTRUCTION

B) Drill the marked holes with a  $\frac{3}{8}$ " drill bit.

C) Locate the 6416A brackets (**FIG:4A-B**) and bolt them onto the frame using the provided  $\frac{3}{8}$ -16 bolts in the holes you just drilled. The top flange of the bracket goes on the under side of the frame rail. (**FIG:5**)

D) Once the 6416A brackets are bolted in with the top holes, you can use the bottom holes of the brackets to mark the next set of holes.

E) Drill bottom holes with a  $\frac{3}{8}$ " drill bit.

F) Install the bottom  $\frac{3}{8}$ -16 bolts. Leave bolts loose for the next step

### Step 5: Install Crossmembers.

A) Install middle crossmember to your 6416A brackets using the six  $\frac{3}{8}$ -16 x 1" Gr 8 Hex Bolts, twelve flat washers, and six Nylock Nuts which are all provided. The large oval holes should face up. Install tank isolator on flange. (**Fig:6**).

B) Torque all  $\frac{3}{8}$ -16 bolts to 45ft-lbs.

**Note: Depending on your preference you can either slide the Tanks Inc. Tank into the frame from the rear (some trimming may be required) or cut the side flanges off to lift it up through the bottom of the frame rails at a later step. This will allow you to do maintenance on the tank without the need to remove the bed, rear crossmember, and rear bumper.**

C) If not cutting the flanges completely, you may need to trim the front of the side flanges. (leave  $\frac{1}{4}$  in from edge of tank pinch weld as to not damage the tank if you do trim it). The frames on these old trucks can vary widely but in the example shown, we trimmed about an inch off both sides. If your frame is perfect, you shouldn't have to trim at all. (**Fig: 7**)

D) Install tank strap isolators into the grooves of the tank on the bottom. Sticky side to the tank. It may be beneficial to bend and work the isolator so it sticks to the tank better.

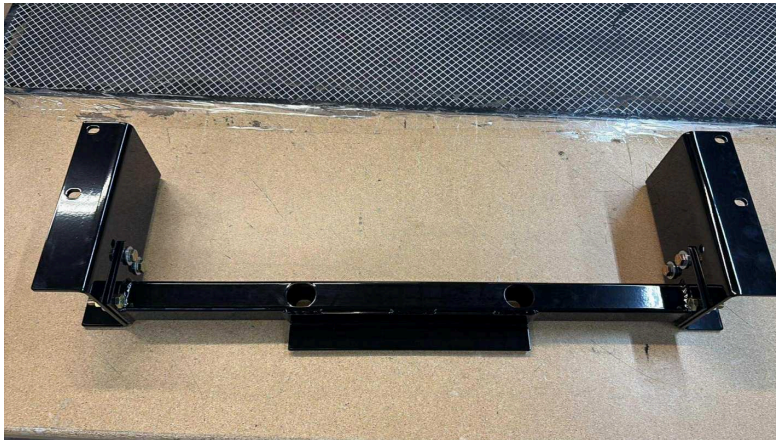


Figure 6: Middle crossmember placement and tank Insulator installed.

## FIGURES FOR REFERENCE



Figure 4B: Installing 6416A Brackets. Shown with 6429DR template to show how 6416A bolts up to drilled holes.

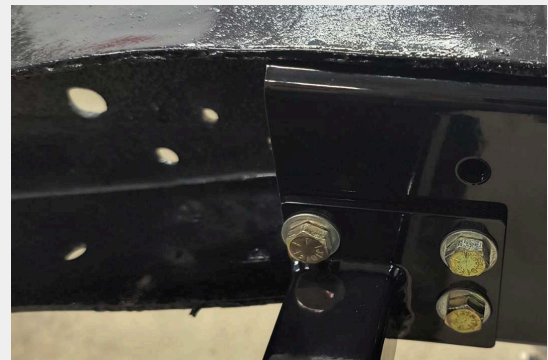


Figure 5: 6416A mounted under frame rail



Figure 7: Side Flanges trimmed to allow better fitment under the crossmembers



## INSTALLATION INSTRUCTION

E) Bend the tank straps around the tank. The bend around the back of the tank begins 5" down the strap. **(Fig: 8)** With the rear bend in place, bend the tank strap to conform against the bottom of the tank along the isolators. **(Fig: 9)**

F) If not cutting the flanges or just trimming, slide the tank into place through the rear of the frame now.

G) Install rear crossmember making sure to align the top bed bolt holes in the frame before tightening the bottom of the crossmember down using a 1/2-13 x 1 1/2" Hex Bolt, two flat washers, and a Nylock Nut for each side. Install tank isolator on flange. Make sure the tank is under both the middle and rear crossmember flanges. **(Fig: 10)**

H) If you are cutting the flanges off the tank you will want to do that now. ( If cutting fuel tank flanges leave 1/4 in from edge of tank pinch weld as to not damage the tank itself and cut excess flange off)

I) Loosely install tank straps to the Middle crossmember. To do this, stick the 1/2-13 2 1/2" hex head flange bolt through the tank strap, put a jam nut on top, then add a washer and feed through the bottom of the middle crossmember. Reach through the large oval hole on top of the crossmember and place another washer and a nyloc nut on the bolt. Do this for both the left and right side. **(Fig 11)**

J) Lift the tank into place (for those that cut the flanges) and wrap the straps around the tank and attach them to the rear crossmember with one 1/2-13 x 1 1/2" Gr 8 Hex Bolt, two 1/2 SAE flat washers, and a 1/2-13 Nylock Nut for each side.

K) Tighten simultaneously until straps are snug. **Do Not Overtighten.** Too tight could cause damage to the tank and prematurely wear the rubber isolator.

L) Once the tank straps are snug and the tank is secure, tighten the jam nut up against the bottom of the middle crossmember.

M) Install filler neck, sending unit and fuel pump for your desired application. The position of the filler neck is intended for a tail light fill position of your choice. **(Fig 12).**

N) Finish plumbing and wiring for the tank and Reinstall Bed, bumper, and filler hose in reverse order.



Figure 11: Front tank strap bolt assembly.

## FIGURES FOR REFERENCE



Figure 8: Measurement for tank strap bending



Figure 9: Tank straps bent around tank bottom

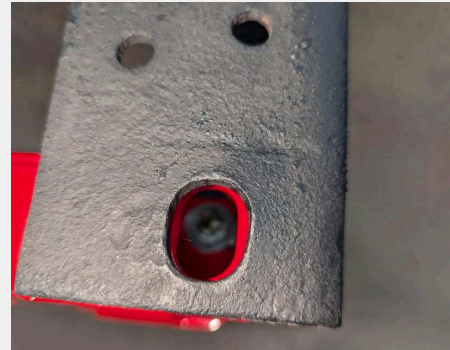


Figure 10: Rear crossmember bed bolt alignment

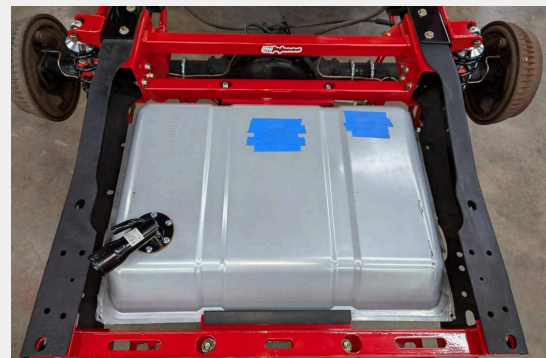


Figure 12: Tank installed along with filler neck.  
(Shown with optional 4 Link Kit)