



#J5003, J5004, J5008, J5010, J5011
1987-1995 Jeep YJ, 1997-2006 Jeep TJ
Transfer Case Drop Kit

Read and understand all instructions and warnings prior to installation of product and operation of vehicle.

Zone Offroad Products recommends this system be installed by a professional technician. In addition to these instructions, professional knowledge of disassembly/ reassembly procedures and post installation checks must be known. Minimum tool requirements include the following: Assorted metric and standard wrenches, hammer, hydraulic floor jack and a set of jack stands. See the "Special Tools Required" section for additional tools needed to complete this installation properly and safely.

» PRODUCT SAFETY WARNING

Certain Zone Suspension Products are intended to improve off-road performance. Modifying your vehicle for off-road use may result in the vehicle handling differently than a factory equipped vehicle. Extreme care must be used to prevent loss of control or vehicle rollover. Failure to drive your modified vehicle safely may result in serious injury or death. Zone Offroad Products does not recommend the combined use of suspension lifts, body lifts, or other lifting devices.

You should never operate your modified vehicle under the influence of alcohol or drugs. Always drive your modified vehicle at reduced speeds to ensure your ability to control your vehicle under all driving conditions. Always wear your seat belt.

» TECHNICAL SUPPORT

Live Chat provides instant communication with Zone tech support. Anyone can access live chat through a link on www.zoneoffroad.com.

www.zoneoffroad.com may have additional information about this product including the latest instructions, videos, photos, etc.

Send an e-mail to tech@zoneoffroad.com detailing your issue for a quick response.

888.998.ZONE Call to speak directly with Zone tech support.

Difficulty Level

easy 1 **2** 3 4 5 difficult

Estimated installation: 0.5-1 hours

Special Tools Required

None

» PRE-INSTALLATION NOTES

1. Special literature required: OE Service Manual for model/year of vehicle. Refer to manual for proper disassembly/reassembly procedures of OE and related components.
2. Adhere to recommendations when replacement fasteners, retainers and keepers are called out in the OE manual.
3. Larger rim and tire combinations may increase leverage on suspension, steering, and related components. When selecting combinations larger than OE, consider the additional stress you could be inducing on the OE and related components.
4. Post suspension system vehicles may experience drive line vibrations. Angles may require tuning, slider on shaft may require replacement, shafts may need to be lengthened or trued, and U-joints may need to be replaced.
5. Secure and properly block vehicle prior to installation of Zone Offroad Products. Always wear safety glasses when using power tools.
6. If installation is to be performed without a hoist, Zone Offroad Products recommends rear alterations first.
7. Due to payload options and initial ride height variances, the amount of lift is a base figure. Final ride height dimensions may vary in accordance to original vehicle attitude. Always measure the attitude prior to beginning installation.

rev090523

Kit Contents

***Important* Verify you have all of the kit components before beginning installation.**

Qty Part

#J5003

6 Tapered Washer
6 T-Case Drop Spacer
6 1/2" x 3" Bolt
6 7/16" USS Washer
1 Loctite

#J5004

6 Tapered Washer
6 T-Case Drop Spacer
6 1/2" x 2.5" Bolt
6 7/16" USS Washer
1 Loctite

#J5008

6 Tapered Washer
6 T-Case Drop Spacer
6 1/2" x 3" Bolt
6 7/16" USS Washer
1 Linkage Bracket
1 Bolt Pack - #704
1 Loctite

#J5010

8 T-Case Drop Spacer
1 Bolt Pack 734
8 12mm-1.75 x 50mm bolt
8 7/16" USS flat washer
1 Loctite

#J5011

6 T-Case Drop Spacer
1 Bolt Pack 716
6 12mm-1.75 x 70mm bolt
6 12mm flat washer
1 Linkage Bracket
1 Bolt Pack 704
2 1/4"-20 prevailing torque nut
2 1/4" SAE flat washer
1 Loctite

INSTALLATION INSTRUCTIONS

» PRE-INSTALLATION NOTES

- 03-06 TJ models equipped with a factory transmission skid plate: Transmission skid plate must be removed for proper front driveshaft clearance when installing #J5011 (1-1/2" Drop). If installing a #J5010, skid plate may need to be removed depending on amount of suspension down travel. Spacers and hardware are provided in this kit to drop the transmission skid if possible.
- Adding a transfer case drop will affect front and rear driveshaft angles. Front and rear pinion angles may need to be adjusted to compensate for transfer case drop.
- Check all clearances after transfer case drop is installed. Check clearance between transfer case and skid plate. Also, the exhaust is attached to the transmission mount which will be in a new location. Check full length of exhaust for proper clearances.
- Read instructions carefully. These instructions cover multiple years/models and kits. Not all steps pertain to all vehicle installations.
- If installing on a vehicle with a body lift, additional modifications of shift linkage/lever may be necessary to achieve proper shifting clearance and function.

» TRANSFER CASE DROP INSTALLATION - ALL MODELS

- Park the vehicle on a clean, flat surface and block the rear wheels for safety.
- Locate and loosen the 4 nuts mounting the transmission mount to the transfer case skid plate. These are accessed from the bottom of the skid plate. Do not completely remove the nuts.

3. Support the transfer case skid plate with a hydraulic floor jack.
4. Loose but do not remove all six skid plate mounting bolts. See pre-installation note #1 for 03-06 TJs.
5. Remove the three passenger's side bolts and slowly lower the skid plate from the frame. Lower the skid plate just enough to install the provided spacers between the frame and the skid plate. The hollow side of the the spacer should face up and fit over the raised area in the frame. Remove any rust so the spacers will sit flush to the bottom of the frame.
6. Attach the skid plate to the frame with the provided hardware: 87-02 models use 1/2" bolts with the provided 7/16 USS washers and conical washers. 03-06 models use 12mm bolts with 7/16" USS washers only. **Figure 1** Leave hardware loose.

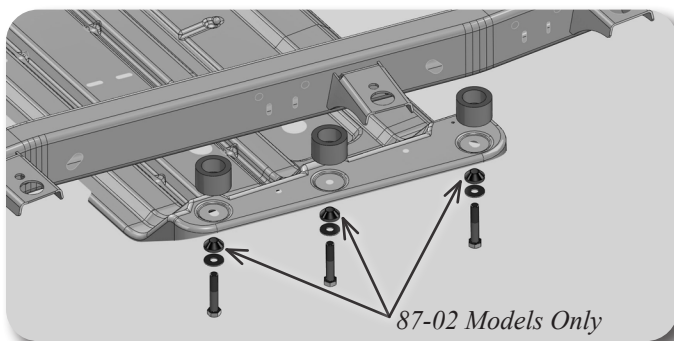


Figure 1

7. Repeat the procedure on the driver's side.
8. With all the spacers/bolts installed remove each bolt one at a time and apply Loctite to the threads. Install bolts and torque to 65 ft-lbs.
9. Torque the 4 transmission mount nuts to 18 ft-lbs.

» T-CASE SHIFT LINKAGE - TJ MODELS WITH 1-1/2" DROP ONLY

1. Locate the transfer case shift linkage pivot bracket mounted to the underside of the floor on the driver's side, next to the transfer case. The bracket is mounted to the floor with four bolts that are accessed under the carpet in front of the driver's seat. Pull the carpet up and remove the bolts **Figure 2**. Save hardware.

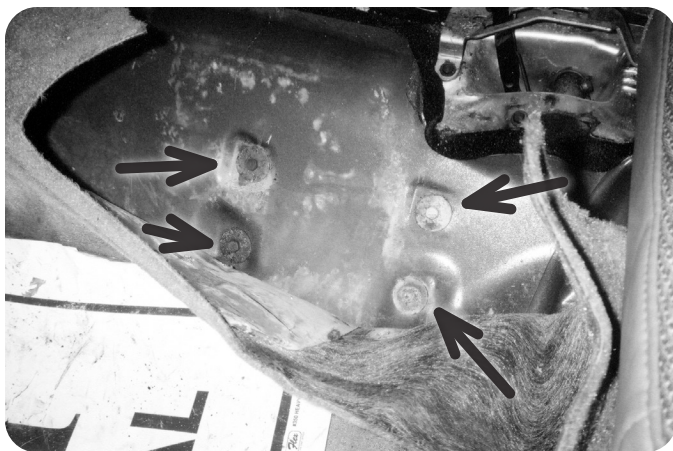


Figure 2

2. Working underneath the vehicle, slide the pivot bracket down and off of the pivot rod running from the transfer case. Remove the bracket assembly from the vehicle.
3. Remove the two bolts that fasten the pivot bushing plate to the bracket. Remove the bushing plate and gasket (when equipped). Save hardware.
4. Attach the provided pivot bushing relocation bracket to the factory bracket with the original hardware. The studs in the new bracket should point out away from the main factory bracket. Torque bolts to 10 ft-lbs.
5. Attach the pivot bushing plate and gasket (when equipped) to the studs on the new plate with the provided 1/4" nuts and washers. Torque nuts to 10 ft-lbs.
6. Install the modified pivot bracket assembly in the vehicle by sliding the linkage rod into the relocated pivot bushing. Reattach the bracket to the floor with the original hardware **Figure 3**. Torque nuts to 15 ft-lbs.



Figure 3

7. Check transfer case shift operation to see that all positions engage completely. Adjust the shift linkage as necessary. The linkage adjustment is located near the pivot bracket at the shifter.

» **POST- INSTALLATION - ALL MODELS**

1. Check transfer case shift lever operation. In some cases additional adjustment/trimming may be necessary to achieve proper engagement in all gears.
2. Check all hardware for proper torque.
3. Check hardware after 500 miles.