



BRIGHT IS ONLY THE BEGINNING

INSTALL GUIDE

XB LED TAIL LIGHTS: NISSAN 370Z (GEN II)

LF417/LF418



WARNING: IT IS THE INSTALLERS RESPONSIBILITY TO CONFIRM COMPLIANCE WITH STATE AND LOCAL LAWS. BY READING THIS DOCUMENT, YOU AGREE IT IS ONLY TO BE USED AS AN EDUCATIONAL GUIDE. MORIMOTO LIGHTING NOR ITS DEALERS MAKE GUARANTEES ON ANY FINISHED RESULTS, NOR ARE THEY TO BE HELD RESPONSIBLE FOR ANY DAMAGE, MISUSE, OR PERSONAL INJURIES. IF YOU ARE UNABLE TO CLEARLY UNDERSTAND AND ADAPT THE INFORMATION BELOW, PROFESSIONAL INSTALLATION IS RECOMMENDED.

IMPORTANT: IF YOUR VEHICLE IS EQUIPPED WITH ANYTHING BUT MORIMOTO OR OEM TAILLIGHTS, SIDE MARKERS OR OTHER OEM EXTERIOR LIGHTING; YOU MAY EXPERIENCE A HYPER FLASH AND/OR PROBLEMS WITH THE SEQUENTIAL SIGNAL SETTING ON THESE HEADLIGHTS. THIS IS NOT A DEFECT IN THE HEADLIGHT AND CAUSED BY UN-MATCHED IMPEDANCE WITH YOUR ORIGINAL VEHICLE SETTINGS.



XB LED TAIL LIGHTS: NISSAN 370Z

TABLE OF CONTENTS	PAGE
DISASSEMBLY -----	3
BOOST BAR INSTALLATION (OPTIONAL) -----	10
TAIL LIGHT CONFIGURATION -----	12
TAIL LIGHT INSTALLATION -----	13

WHAT'S INCLUDED



**2X (PAIR) TAIL LIGHT
ASSEMBLIES**



**2X MAGENT-MOUNT
RESISTORS**

REQUIRED TOOLS

- **TRIM REMOVAL TOOL**
- **RATCHET**
- **8MM SOCKET**
- **10MM SOCKET**
- **WIRE SNAKE (FOR
OPTIONAL BOOST BAR
INSTALLATION)**



DISASSEMBLY

THIS DOCUMENT IS MEANT TO SERVE AS A GENERAL GUIDE FOR VEHICLE DISASSEMBLY AND PRODUCT INSTALLATION. WHILE WE TRY TO COVER THE PROCESS AS THOROUGHLY AS POSSIBLE, YOUR EXPERIENCE MAY DIFFER SLIGHTLY DUE TO DIFFERENCES BETWEEN YEARS, TRIM PACKAGES, OPTIONS, OR AFTERMARKET PARTS INSTALLED.

VEHICLE USED IN THIS GUIDE:

2014 NISSAN 370Z NISMO

1. RAISE THE REAR HATCH OF THE CAR
2. REMOVE THE REAR HATCH MAT AND CARPET. YOU CAN ALSO REMOVE THE SPARE TIRE COVER TRAY, OR SIMPLY SLIDE IT OUT OF THE WAY

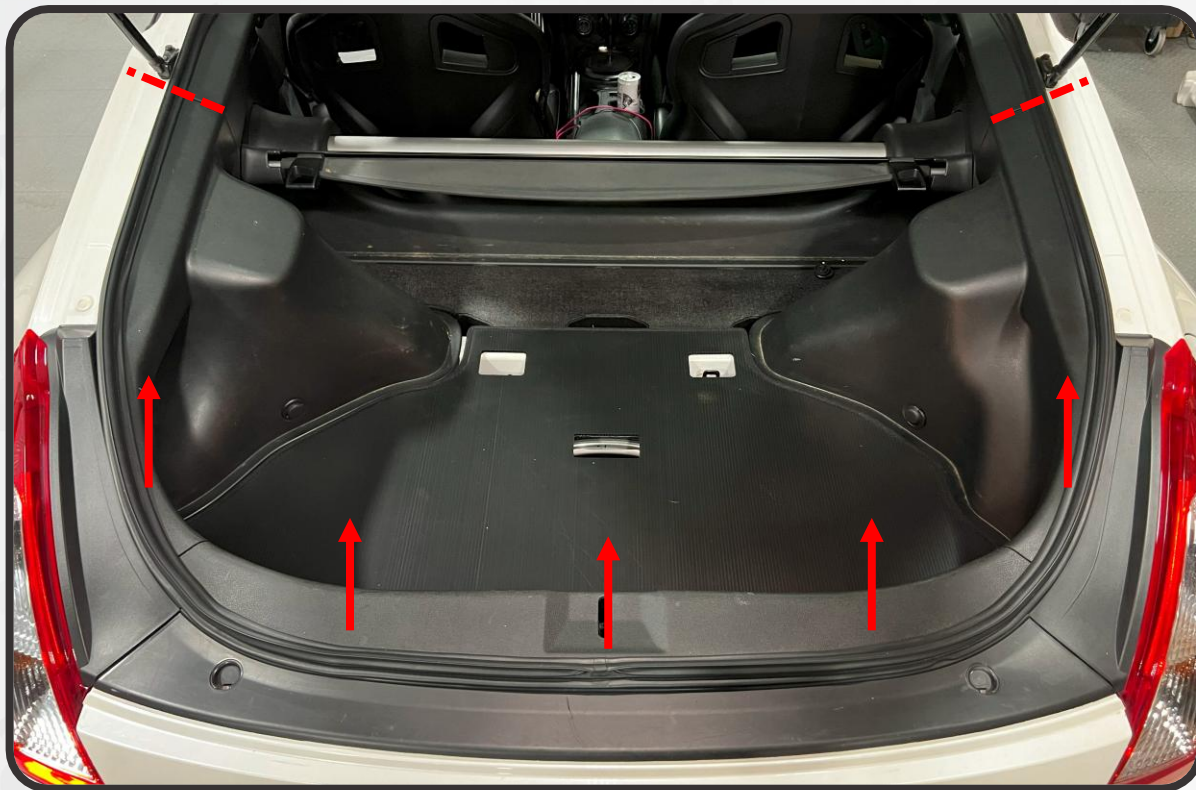


3. REMOVE THE TWO TIE-DOWNS FROM THE REAR HATCH PANEL BY PRYING OUT THE CENTER/TOP PORTION, AND THEN PULLING OUT THE TIE DOWN



DISASSEMBLY

4. STARTING AT THE MIDDLE OF THE CAR, PULL THE HATCH WEATHER STRIP LOOSE UP TO JUST ABOVE THE EDGE OF THE INTERIOR HATCH SIDE PANELS



5. PRY LOOSE THE INTERIOR HATCH LIGHT LOCATED ON THE REAR INTERIOR PANEL AND DISCONNECT THE HARNESS FROM THE LIGHT ASSEMBLY. SET THE ASSEMBLY ASIDE AND TUCK THE HARNESS BACK IN BEHIND THE PANEL



DISASSEMBLY

6. FIRMLY PRY UP ON THE REAR HATCH PANEL TO RELEASE THE CLIPS SECURING IT TO THE BODY OF THE CAR. REMOVE THE PANEL AND SET IT ASIDE



7. REMOVE THE TIE DOWN FROM THE SIDE PANEL



DISASSEMBLY

8. REMOVE THE PLASTIC PUSH CLIP FROM THE REAR EDGE OF THE SIDE PANEL BY PRYING UP THE CENTER, THEN PRYING OUT THE BODY OF THE CLIP

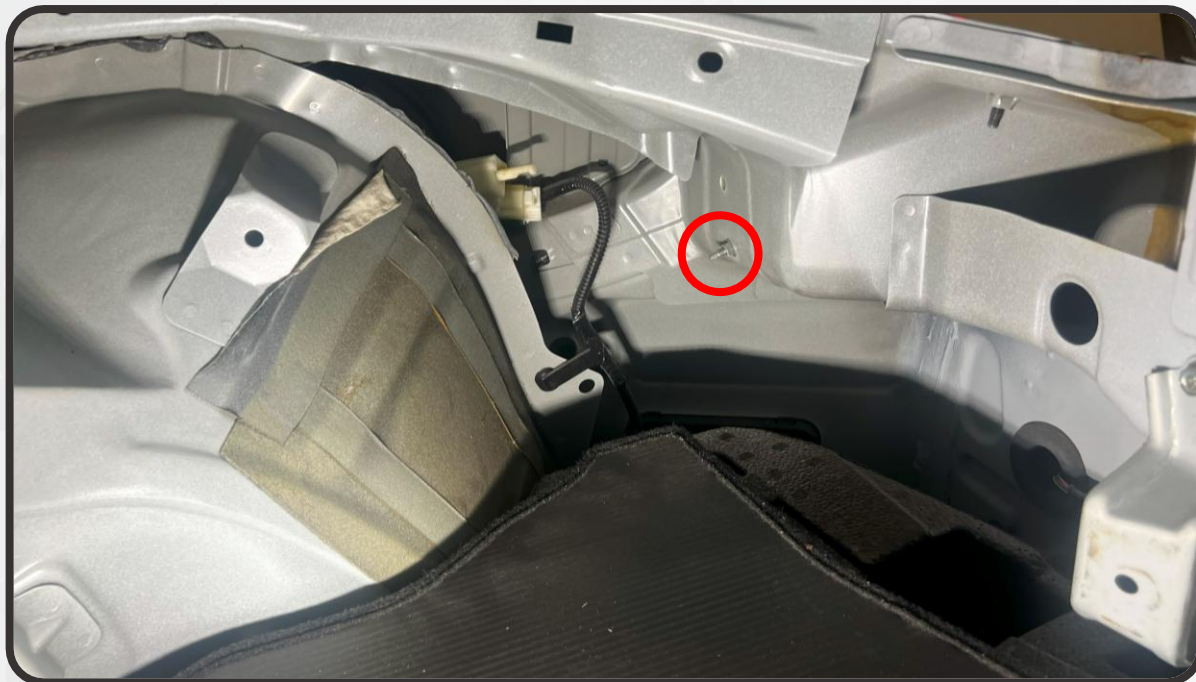


9. WITH THE HARDWARE REMOVED, FIRMLY PRY LOOSE THE SIDE HATCH PANEL TO RELEASE THE CLIPS THAT SECURE IT. REMOVE THE PANEL FROM THE CAR AND SET IT ASIDE



DISASSEMBLY

10. REMOVE THE 8MM NUT FROM THE CAVITY BEHIND THE TAIL LIGHT



11. PRY UPWARDS ON THE TRIM PANEL ABOVE THE TAIL LIGHT TO REMOVE IT. SET IT ASIDE ONCE YOU DO



DISASSEMBLY

12. WITH THE TRIM REMOVED, REMOVE THE TWO 10MM BOLTS THAT SECURE THE TAIL LIGHT TO THE CAR



13. WITH THE TAIL LIGHT HARDWARE REMOVED, PULL THE TAIL LIGHT STRAIGHT BACK TO REMOVE IT FROM THE VEHICLE



DISASSEMBLY

14. WITH THE TAIL LIGHT OFF OF THE CAR, REACH AROUND TO THE BACK OF THE LIGHT AND DISCONNECT THE TAIL LIGHT HARNESS FROM THE ASSEMBLY BY DEPRESSING THE TAB ON THE CONNECTOR AND PULLING THE PLUGS APART



15. REPEAT STEPS 7-14 ON THE OPPOSITE SIDE OF THE CAR

BOOST BAR INSTALLATION (OPTIONAL)

IF YOU ARE INSTALLING THE MORIMOTO BACK-UP LIGHT BOOST BAR (OPTIONAL, SOLD SEPARATELY), FOLLOW THE STEPS BELOW. IF YOU ARE NOT, PROCEED TO PAGE 12

16. REMOVE THE TWO 10MM BOLTS SECURING THE LICENSE PLATE TO THE CAR



17. FIT THE BOOST BAR ONTO THE TOP OF THE LICENSE PLATE AND REINSTALL THE LICENSE PLATE HARDWARE

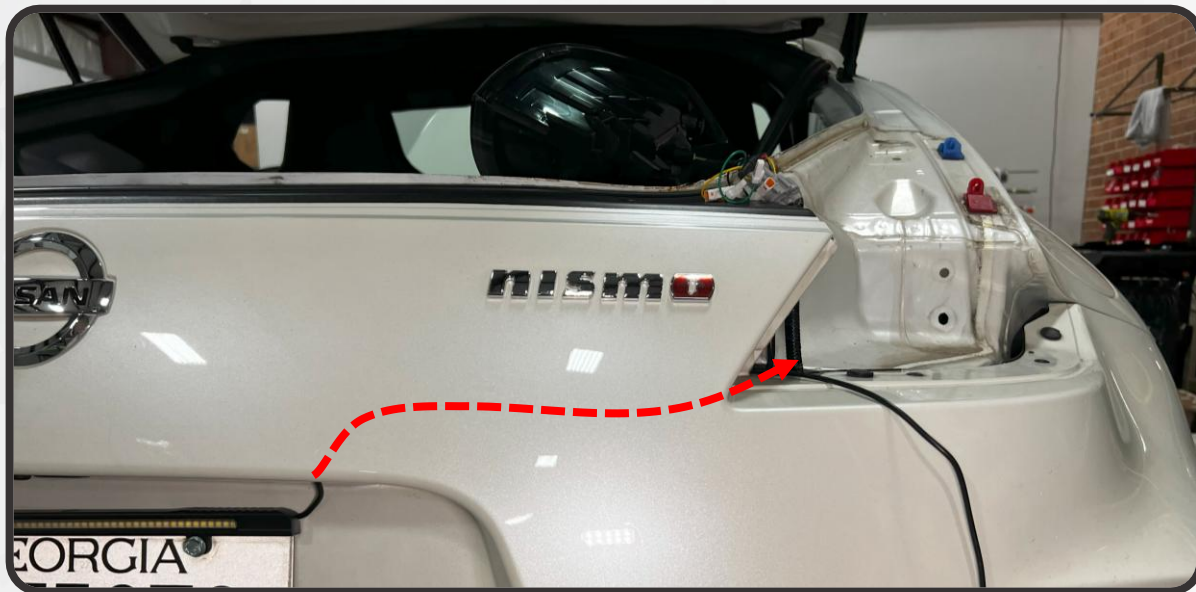


18. POP THE RIGHT-SIDE LICENSE PLATE LIGHT ASSEMBLY LOOSE SO THAT THE BOOST BAR WIRING CAN BE ROUTED INTO THE REAR BUMPER COVER



BOOST BAR INSTALLATION (OPTIONAL)

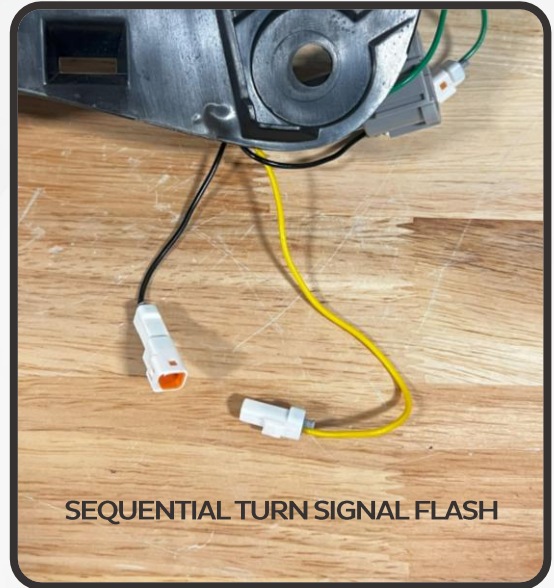
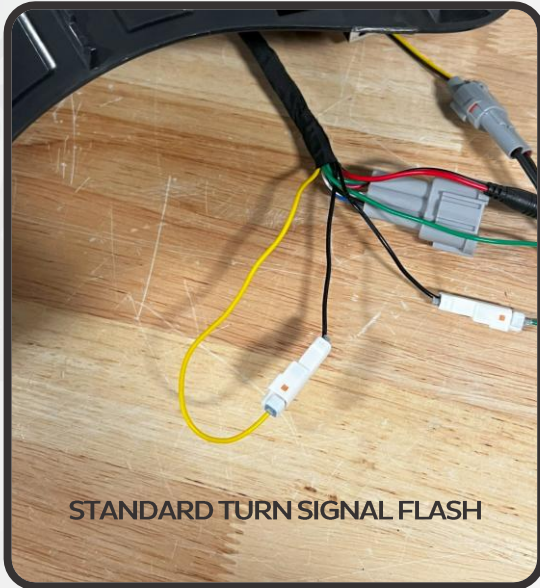
19. USING FISH TAPE OR AN IMPROVISED WIRE SNAKE, ROUTE THE BOOST BAR WIRING INTO THE REAR BUMPER COVER AND OUT OF THE RIGHT-SIDE TAIL LIGHT CAVITY. PULL THE WIRING THROUGH, AND REINSTALL THE LICENSE PLATE LIGHT ASSEMBLY



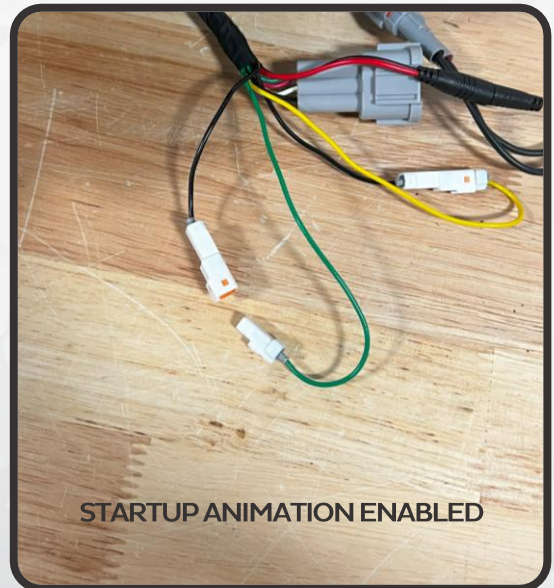
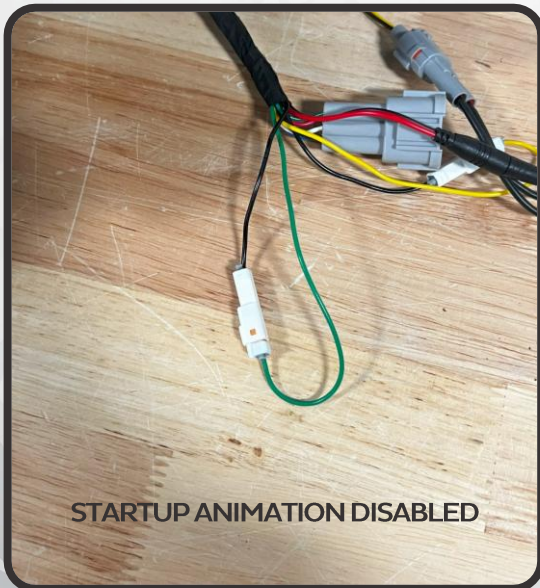
20. BUNDLE AND SECURE THE EXCESS WIRING AND LEAVE THE CONNECTOR IN THE RIGHT-SIDE TAIL LIGHT CAVITY TO BE CONNECTED TO THE NEW TAIL LIGHT LATER

TAIL LIGHT CONFIGURATION

21. USE THE YELLOW FUNCTION SELECTOR WIRE ON THE BACK OF THE LIGHT TO SWAP BETWEEN STANDARD TURN SIGNAL FLASH AND SEQUENTIAL FLASH. LEAVE THE WIRES CONNECTED FOR STANDARD FLASH, OR DISCONNECTED FOR SEQUENTIAL FLASH



22. USE THE GREEN FUNCTION SELECTOR WIRE ON THE BACK OF THE LIGHT TO EITHER ENABLE OR DISABLE THE STARTUP ANIMATION WHEN THE PARKING LIGHT IS TURNED ON. LEAVE THE WIRES CONNECTED FOR NO STARTUP ANIMATION, OR DISCONNECTED FOR THE STARTUP ANIMATION



TAIL LIGHT INSTALLATION

23. PLACE ONE OF THE MAGNET-MOUNT RESISTORS ON THE BODY OF THE CAR IN THE CAVITY BETWEEN THE BODY AND THE REAR BUMPER COVER, AS SHOWN BELOW



24. RAISE THE NEW TAIL LIGHT ASSEMBLY UP TO THE VEHICLE AND CONNECT THE TAIL LIGHT HARNESS, RESISTOR, AND BOOST BAR (IF INSTALLED, RIGHT SIDE ONLY)



TAIL LIGHT INSTALLATION

25. PUSH THE TAIL LIGHT ASSEMBLY INTO THE TAIL LIGHT CAVITY ON THE CAR. MAKE SURE THAT THE WIRING DOES NOT GET PINCHED OR CAUGHT AS YOU DO. REINSTALL THE TWO 10MM BOLTS THAT SECURE THE TAIL LIGHT TO THE CAR



26. WHEN PUTTING THE TAIL LIGHT ON THE CAR, YOU CAN POSITION THE FUNCTION SELECTOR LOOPS IN THE GAP SHOWN BELOW SO THAT THEY REMAIN ACCESSABLE AFTER INSTALLATION IF YOU DECIDE TO CHANGE THEM LATER



XB LED TAIL LIGHTS: NISSAN 370Z

- 27. REPEAT STEPS 23-26 ON THE OPPOSITE SIDE OF THE CAR
- 28. GET IN THE VEHICLE AND CONFIRM THAT ALL FUNCTIONS ARE WORKING PROPERLY
- 29. REASSEMBLE THE CAR IN THE REVERSE ORDER OF DISASSEMBLY



- ENJOY YOUR NEW MORIMOTO XB TAIL LIGHTS! -

