



BRIGHT IS ONLY THE BEGINNING

INSTALL GUIDE

XRGB EVO HEADLIGHTS: DODGE RAM (09-18)

LF2-520R



WARNING: IT IS THE INSTALLERS RESPONSIBILITY TO CONFIRM COMPLIANCE WITH STATE AND LOCAL LAWS. BY READING THIS DOCUMENT, YOU AGREE IT IS ONLY TO BE USED AS AN EDUCATIONAL GUIDE. MORIMOTO LIGHTING NOR ITS DEALERS MAKE GUARANTEES ON ANY FINISHED RESULTS, NOR ARE THEY TO BE HELD RESPONSIBLE FOR ANY DAMAGE, MISUSE, OR PERSONAL INJURIES. IF YOU ARE UNABLE TO CLEARLY UNDERSTAND AND ADAPT THE INFORMATION BELOW, PROFESSIONAL INSTALLATION IS RECOMMENDED.

IMPORTANT: IF YOUR VEHICLE IS EQUIPPED WITH ANYTHING BUT MORIMOTO OR OEM TAILLIGHTS, SIDE MARKERS OR OTHER OEM EXTERIOR LIGHTING; YOU MAY EXPERIENCE A HYPER FLASH AND/OR PROBLEMS WITH THE SEQUENTIAL SIGNAL SETTING ON THESE HEADLIGHTS. THIS IS NOT A DEFECT IN THE HEADLIGHT AND CAUSED BY UN-MATCHED IMPEDANCE WITH YOUR ORIGINAL VEHICLE SETTINGS.



XRGB EVO HEADLIGHTS: DODGE RAM (09-18)

TABLE OF CONTENTS

PAGE

DISASSEMBLY -----	3
HEADLIGHT SETUP -----	7
INSTALLATION -----	10
AIMING -----	13
RGB CONTROLLER OPERATION -----	14

WHAT'S INCLUDED



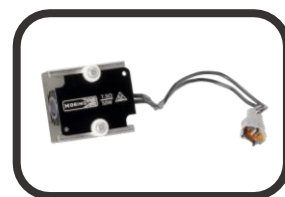
2X (PAIR) HEADLIGHT
HOUSINGS



2X OE PROJECTOR
HEADLIGHT
HARNESSES



2X OE REFLECTOR
HEADLIGHT
HARNESSES



2X MAGNET-
MOUNTED
RESISTORS



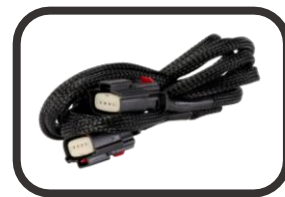
1X MICRO FUSE TAP



1X MINI FUSE TAP



1X DRL HARNESS



1X RGB
CROSSOVER
HARNESS



4X PAIRS MODE
SELECTOR KEYS



REQUIRED TOOLS

- TRIM REMOVAL TOOL
- RATCHET

- 10MM SOCKET
- PHILLIPS HEAD
SCREWDRIVER



DISASSEMBLY

THIS DOCUMENT IS MEANT TO SERVE AS A GENERAL GUIDE FOR VEHICLE DISASSEMBLY AND PRODUCT INSTALLATION. WHILE WE TRY TO COVER THE PROCESS AS THOROUGHLY AS POSSIBLE, YOUR EXPERIENCE MAY DIFFER SLIGHTLY DUE TO DIFFERENCES BETWEEN YEARS, TRIM PACKAGES, OPTIONS, OR AFTERMARKET PARTS INSTALLED.

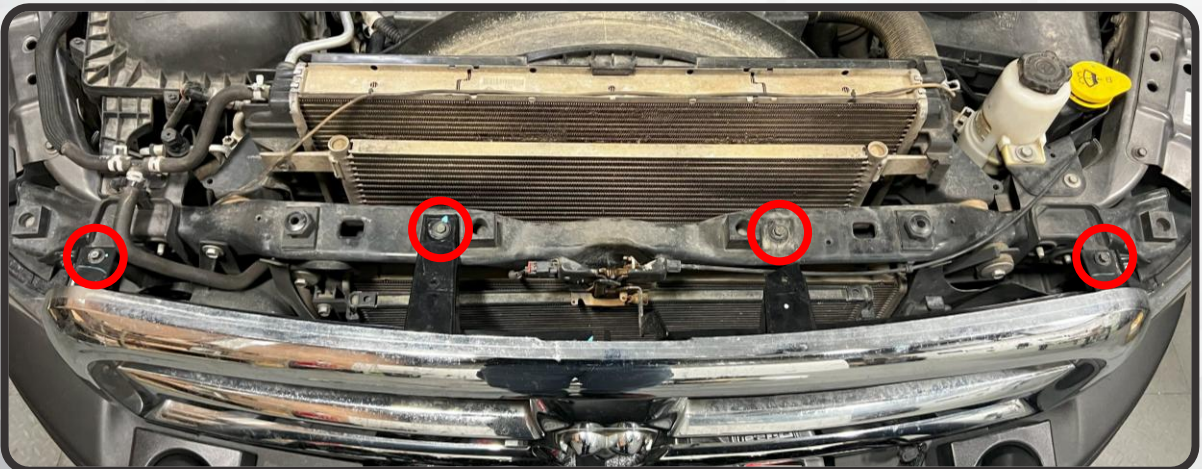
VEHICLE USED IN THIS GUIDE:

2014 RAM 2500HD

1. RAISE THE HOOD OF THE VEHICLE
2. USING A TRIM REMOVAL PRY TOOL, REMOVE THE FOUR PLASTIC PUSH CLIPS THAT SECURE THE PLASTIC RADIATOR SHROUD TO THE VEHICLE. ONCE THE CLIPS ARE REMOVED, REMOVE THE SHROUD AND SET IT ASIDE

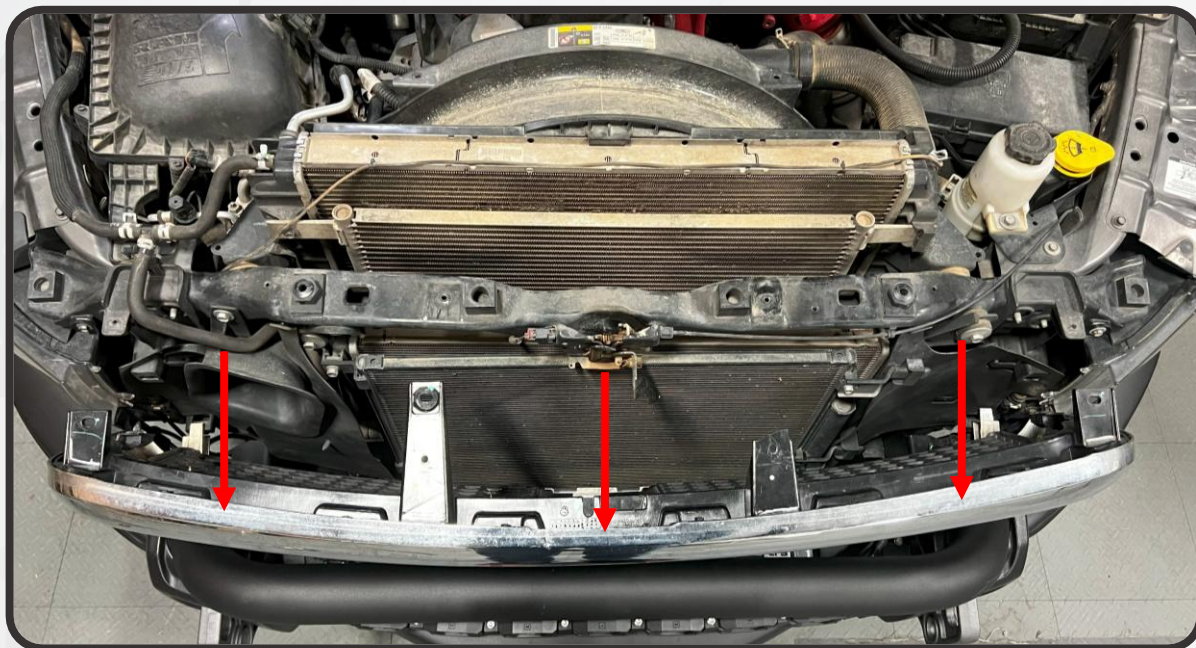


3. REMOVE THE FOUR 10MM BOLTS THAT SECURE THE TOP OF THE GRILLE TO THE UPPER RADIATOR SUPPORT

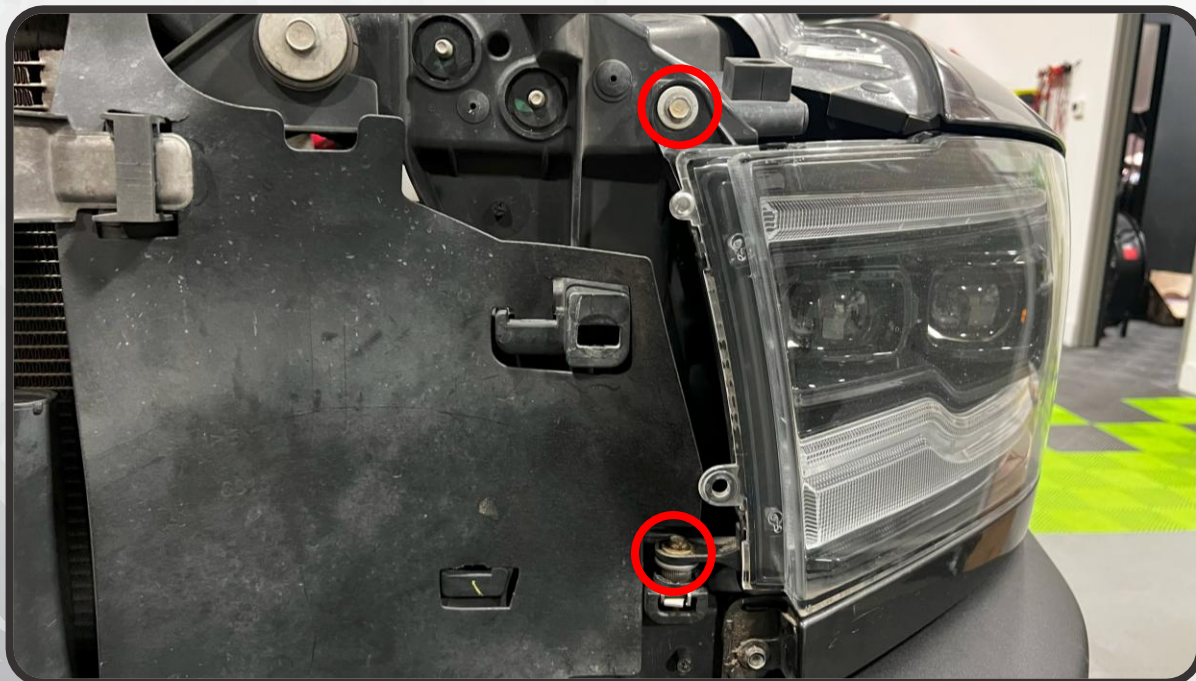


DISASSEMBLY

4. PULL THE FRONT GRILLE ASSEMBLY FORWARD WITH MODERATE FORCE TO RELEASE THE FOUR CLIPS THAT SECURE IT TO THE TRUCK. ONCE IT IS RELEASED, REMOVE THE GRILLE FROM THE TRUCK AND SET IT ASIDE



5. REMOVE THE TWO 10MM BOLTS THAT SECURE THE INNER CORNERS OF THE DRIVER-SIDE HEADLIGHT HOUSING

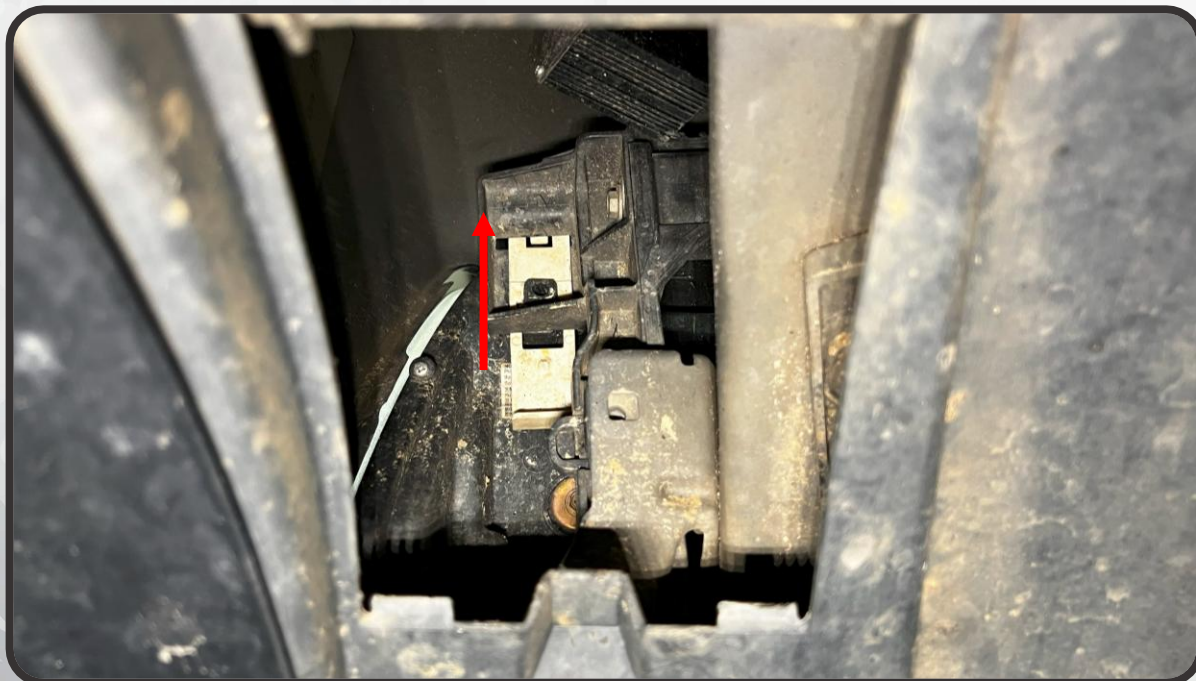


DISASSEMBLY

6. MOVING TO THE DRIVER-SIDE WHEEL WELL, OPEN THE ACCESS PANEL ON THE FENDER LINER

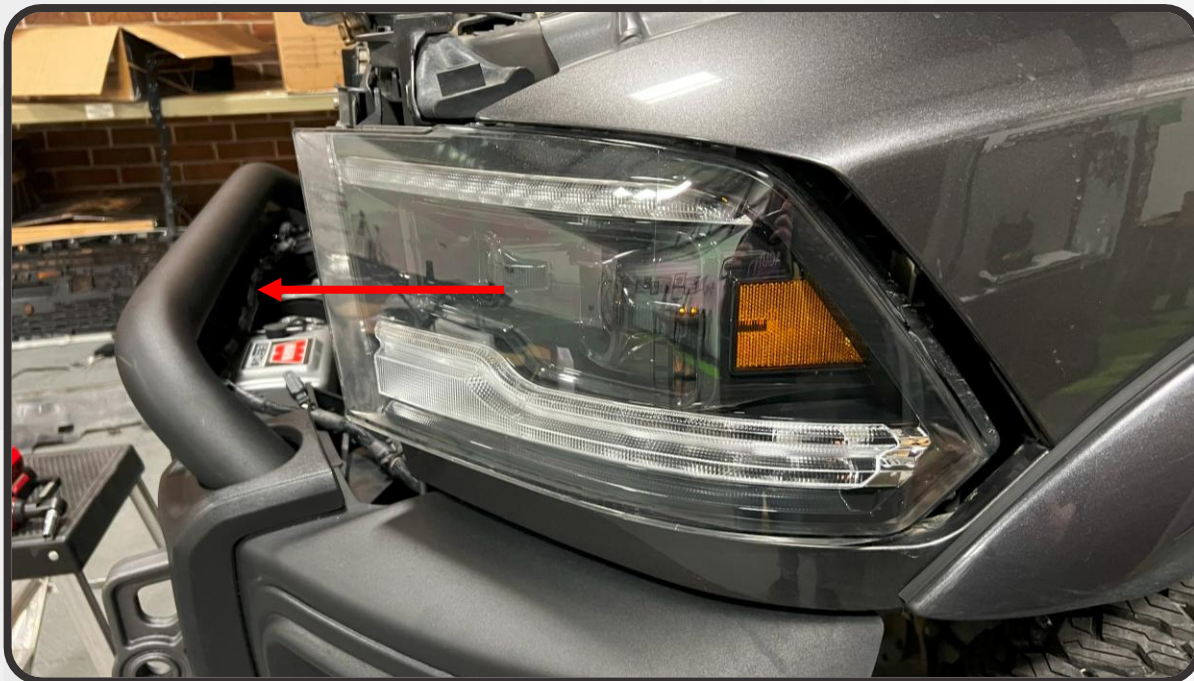


7. REACH THROUGH THE ACCESS PANEL AND SLIDE THE WHITE CLIP UPWARDS INTO THE "UNLOCKED" POSITION



DISASSEMBLY

8. FIRMLY PULL THE HEADLIGHT FORWARD TO RELEASE IT FROM THE TRUCK. DISCONNECT THE CONNECTOR(S) ON THE BACK OF THE HOUSING, AND SET THE LIGHT ASIDE



9. REPEAT STEPS 5-8 ON THE OPPOSITE SIDE

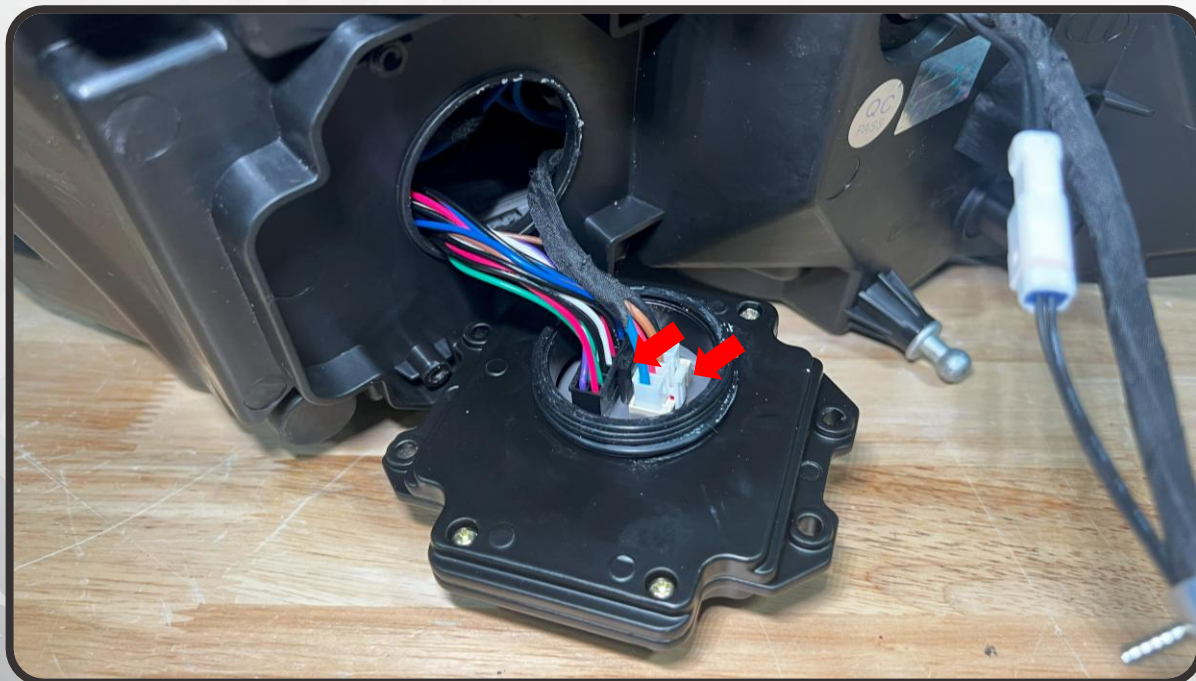


HEADLIGHT SETUP

12. IF YOU HAVE PURCHASED THE MORIMOTO XB SUPERCHARGED HEADLIGHT DRIVERS (SOLD SEPARATELY, FOR OFFROAD USE ONLY), REMOVE THE FOUR PHILLIPS HEAD SCREWS SECURING THE STANDARD HEADLIGHT DRIVER TO THE BACK OF THE HEADLIGHT

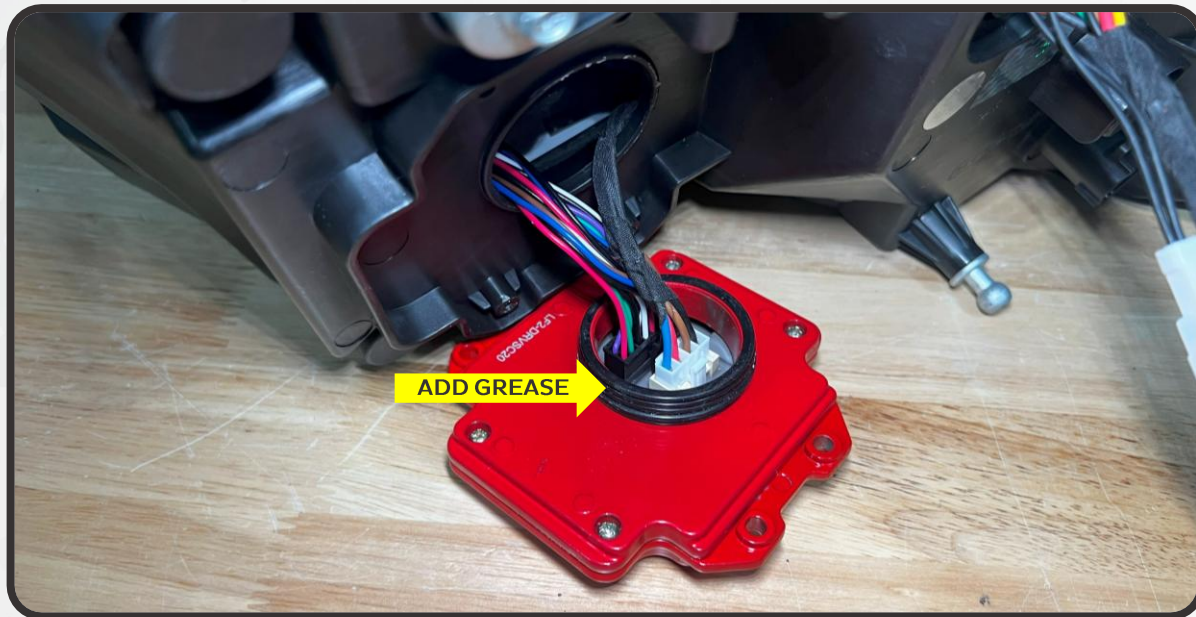


13. PULL THE DRIVER OFF OF THE HOUSING. DEPRESS THE CLIP ON EACH OF THE DRIVER CONNECTORS AND PULL TO DISCONNECT THE DRIVER FROM THE INTERNAL HEADLIGHT WIRING

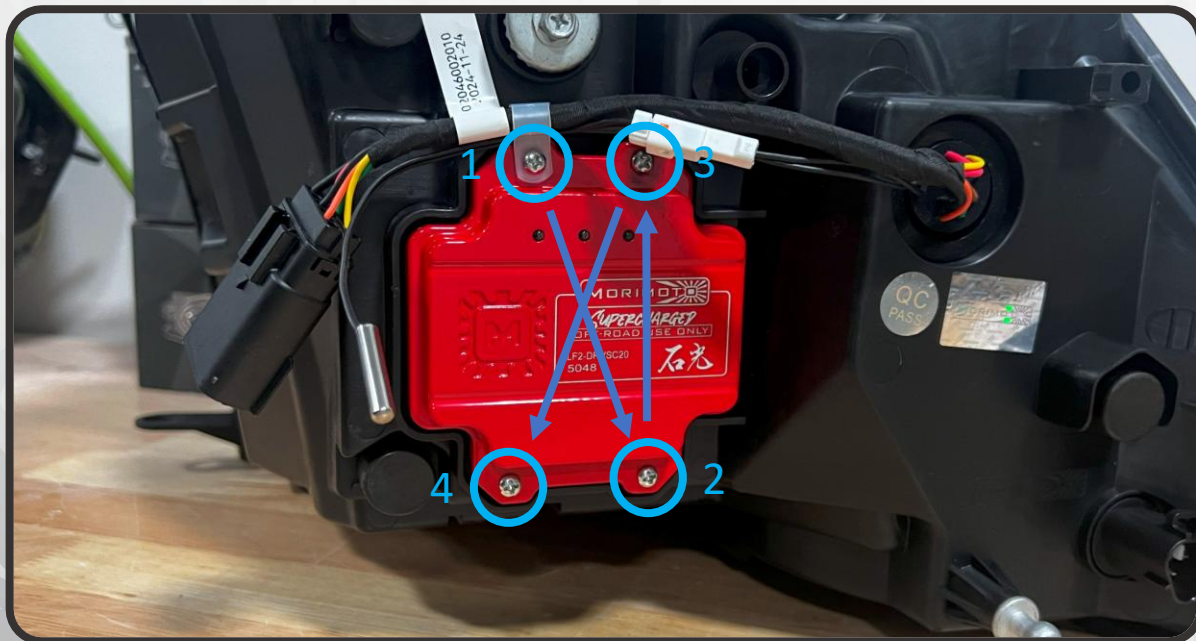


HEADLIGHT SETUP

14. CONNECT THE NEW SUPERCHARGED DRIVER TO THE INTERNAL HEADLIGHT WIRING, MAKING SURE THE TAB ON EACH OF THE CONNECTOR'S CLIPS SECURELY INTO PLACE. APPLY A THIN LAYER OF THE INCLUDED GREASE TO THE OUTER EDGE OF THE SEAL ON THE NEW DRIVER



15. PRESS THE SUPERCHARGED DRIVER STRAIGHT INTO THE MOUNTING LOCATION, MAKING SURE THE RUBBER SEAL IS SEATED PROPERLY AND DOES NOT GET PINCHED OR BUNCHED UP. SECURE THE DRIVER TO THE HOUSING USING THE ORIGINAL FOUR PHILLIPS HEAD SCREWS, HAND TIGHTENING THEM DOWN IN A STAR PATTERN TO ENSURE THE DRIVER SEATS EVENLY AGAINST THE HOUSING



HEADLIGHT SETUP

10. WITH THE MORIMOTO XB MODE SELECTOR KEYS, YOU CAN DECIDE WHAT STYLE YOU'D LIKE FOR YOU DAYTIME RUNNING LIGHT AND TURN SIGNAL. CHOOSE FROM THE COLORCODED KEYS SHOWN BELOW FOR YOUR DESIRED STYLE

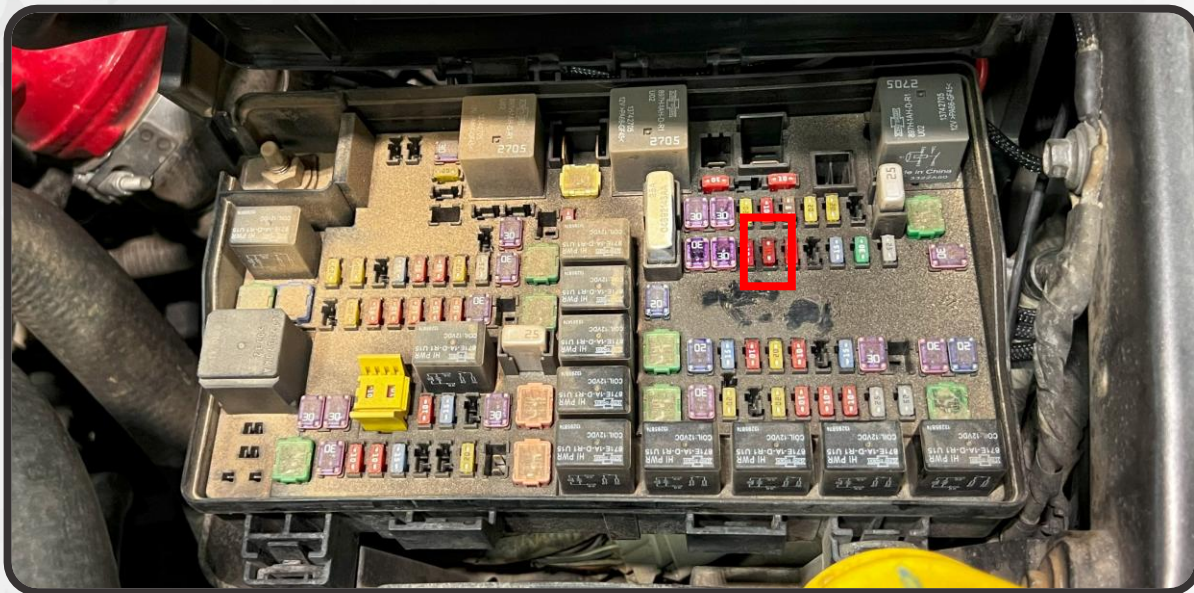
			
<ul style="list-style-type: none">• DRL: WHITE• TURN SIGNAL: FADE-OFF	<ul style="list-style-type: none">• DRL: WHITE• TURN SIGNAL: SEQUENTIAL	<ul style="list-style-type: none">• DRL: AMBER• TURN SIGNAL: FADE-OFF	<ul style="list-style-type: none">• DRL: AMBER• TURN SIGNAL: SEQUENTIAL

11. INSTALL THE MODE SELECTOR FOR YOUR PREFERRED MODE ONTO THE 3-PIN CONNECTOR ON THE BACK OF EACH HEADLIGHT (BLUE WILL BE PREINSTALLED OUT OF THE BOX). THIS CAN ALWAYS BE CHANGED AFTER INSTALL IF DESIRED. MAKE SURE THE VEHICLE AND HEADLIGHTS ARE OFF WHEN CHANGING MODE SELECTORS



INSTALLATION

11. OPEN THE LID TO THE FUSE BOX LOCATED IN THE ENGINE BAY
12. LOCATE AND REMOVE THE 10A FUSE IN THE F66 "SUNROOF/LRSM" SLOT ('09-'12 MODEL YEAR TRUCKS HAVE A DIFFERENT FUSE BOX. USE FUSE SLOT M6 OR M19)



13. INSTALL THE PROVIDED MICRO FUSE TAP INTO THE F66 FUSE SLOT (FOR '09-'12 MODEL YEAR TRUCKS, USE THE MINI FUSE TAP). ROUTE THE FUSE TAP WIRE OUT OF THE FUSE BOX AND CLOSE THE LID



INSTALLATION

14. CONNECT THE DRL HARNESS TO THE FUSE TAP. ROUTE THE HARNESS FORWARD TO THE DRIVER-SIDE HEADLIGHT CAVITY, THEN ACROSS THE UPPER RADIATOR SUPPORT TO THE PASSENGER-SIDE HEADLIGHT CAVITY. TAKE THIS TIME TO ALSO ROUTE THE RGB CROSSOVER HARNESS BETWEEN THE HEADLIGHT CAVITIES, FOLLOWING THE SAME ROUTING AS THE DRL HARNESS



REFLECTOR STYLE



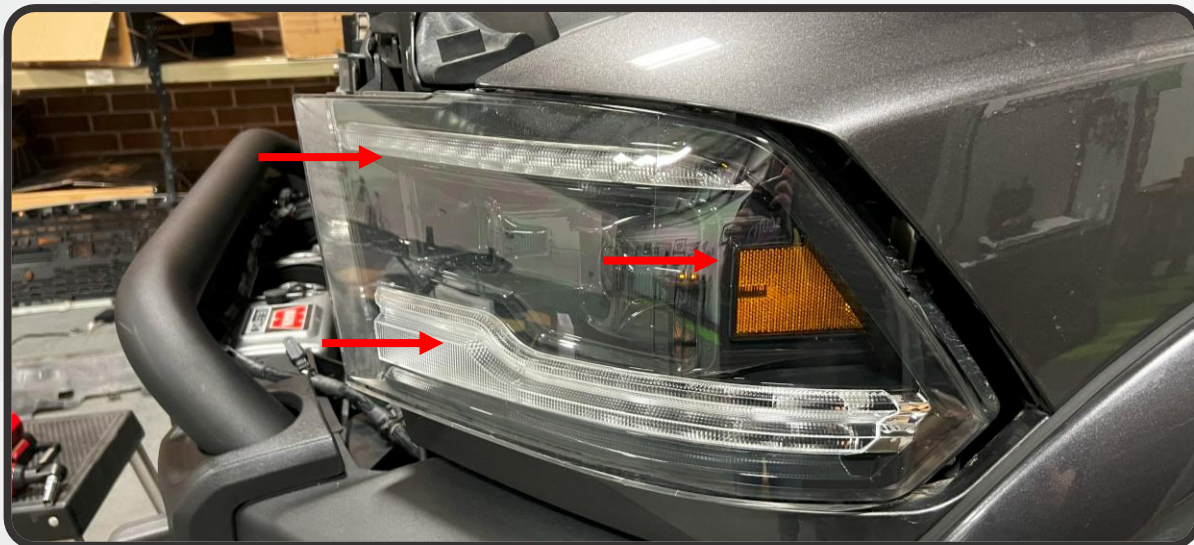
PROJECTOR STYLE

15. IDENTIFY YOUR FACTORY HEADLIGHTS ABOVE. CONNECT THE CORRESPONDING HEADLIGHT HARNESS TO THE HEADLIGHT CONNECTOR(S). FOR TRUCKS WITH FACTORY REFLECTOR HEADLIGHTS, ATTACH ONE MAGNET-MOUNT RESISTOR TO THE FRAME OF THE TRUCK IN THE HEADLIGHT CAVITY AND CONNECT THE RESISTOR TO THE HEADLIGHT HARNESS. DO THIS ON BOTH SIDES



INSTALLATION

22. LIFT THE HEADLIGHT UP TO THE TRUCK AND CONNECT THE HEADLIGHT HARNESS, DRL HARNESS, AND RGB CROSSOVER HARNESS TO THE CORRESPONDING CONNECTORS ON THE BACK OF THE HOUSING. THEN, FIT THE HOUSING INTO THE HEADLIGHT CAVITY AND PUSH IT STRAIGHT ONTO THE VEHICLE



23. LOOSELY REINSTALL THE FACTORY HARDWARE AND LOCK THE TAB ON THE BACK OF THE HOUSING TO SECURE THE LIGHT TO THE TRUCK
24. REPEAT STEPS 20-23 ON THE OPPOSITE SIDE OF THE TRUCK
25. GET IN THE VEHICLE AND CONFIRM THAT ALL FUNCTIONS ARE WORKING PROPERLY
- THERE ARE THREE LEDS ON THE BACK OF THE LED DRIVER THAT INDICATE WHEN POWER IS BEING RECEIVED BY THE HEADLIGHT. IF ANY OF THESE INDICATOR LIGHTS ARE NOT ILLUMINATED WHEN THE CORRESPONDING FUNCTION SHOULD BE POWERED, RECHECK YOUR CONNECTIONS AND RELEVANT FUSES



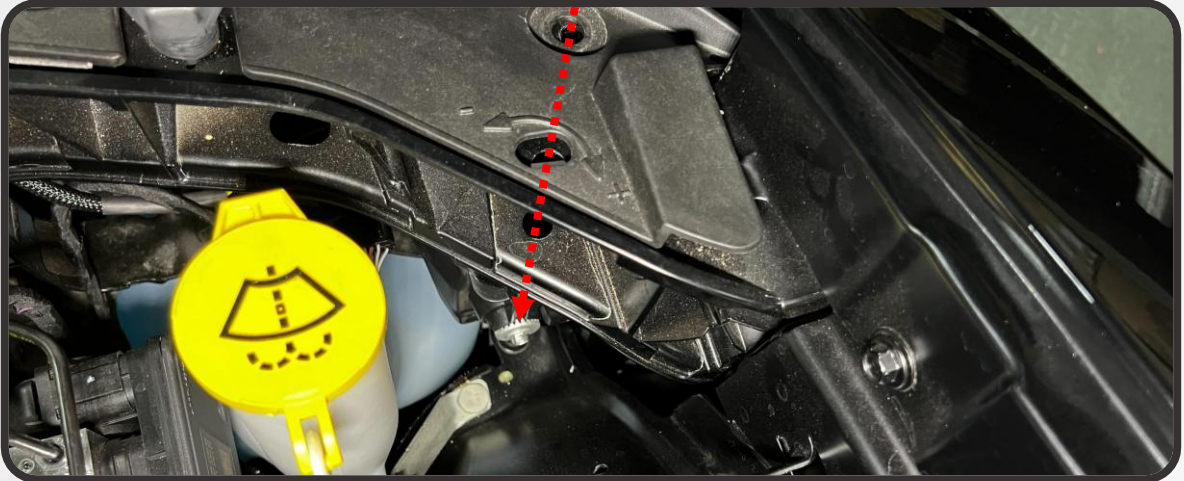
- GREEN – LOW BEAM
- BLUE – HIGH BEAM
- RED – FUSE TAP

26. GO BACK AND TIGHTEN DOWN ALL HARDWARE AND REASSEMBLE THE FRONT OF THE VEHICLE IN THE REVERSE ORDER OF DISASSEMBLY

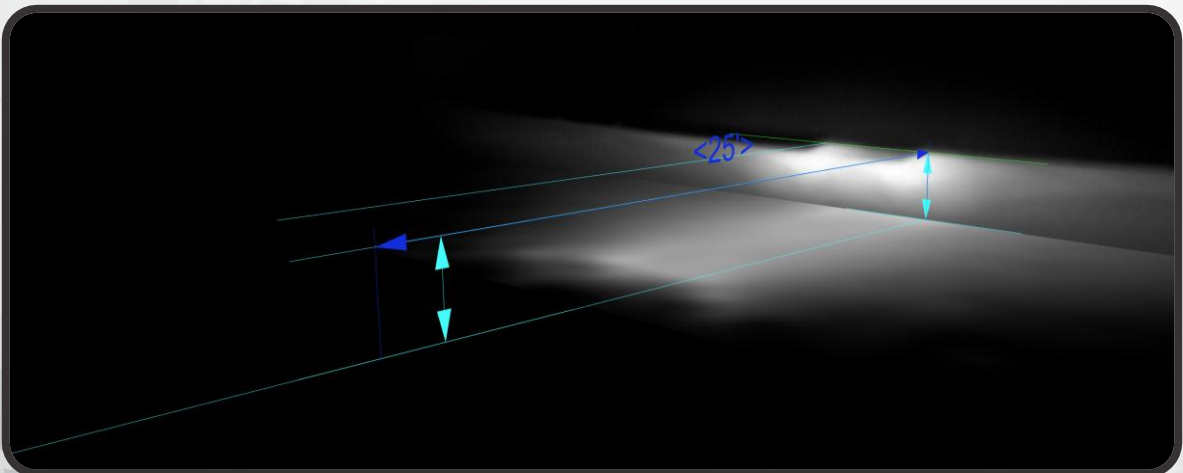


AIMING

20. THE HEADLIGHTS COME OUT OF THE BOX AIMED FOR STOCK RIDE HEIGHT, HOWEVER IT IS RECOMMENDED TO FINE TUNE THE AIM OF YOUR LOW BEAM AFTER INSTALLATION REGARDLESS. USING A LONG PHILLIPS HEAD SCREWDRIVER DOWN THE BACK OF THE HEADLIGHT TO THE ADJUSTER GEAR, FOLLOW THE INSTRUCTIONS BELOW TO PROPERLY ALIGN YOUR HEADLIGHTS' LOW BEAM CUTOFF (THE UPPER HORIZONTAL EDGE OF THE LOW BEAM)



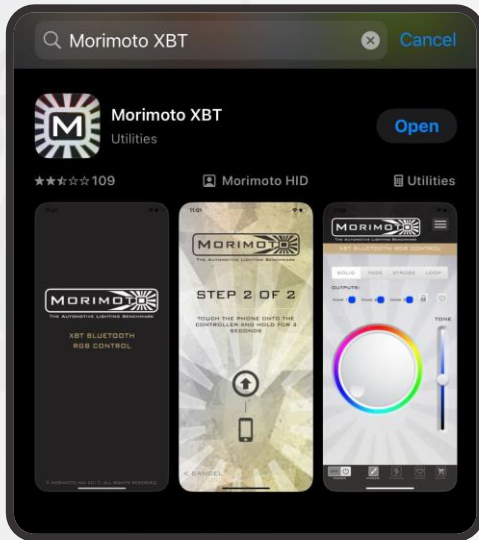
21. WITH THE VEHICLE PARKED ON LEVEL GROUND, 25' FROM A WALL, MEASURE THE DISTANCE FROM THE GROUND TO THE OPTICAL CENTER OF THE OUTERMOST PROJECTOR IN THE HEADLIGHT
- IF THE DISTANCE FROM THE GROUND TO THE OPTICAL CENTER IS LESS THAN 34.5", ADJUST THE TOP OF THE HEADLIGHT CUTOFF TO THE SAME HEIGHT AS THE HEADLIGHT MEASUREMENT YOU TOOK
 - IF THE HEIGHT IS BETWEEN 35"-39", ADJUST THE CUTOFF TO 2" BELOW YOUR HEADLIGHT MEASUREMENT
 - IF THE HEIGHT IS GREATER THAN 39.5", ADJUST THE CUTOFF TO 3" BELOW YOUR HEADLIGHT MEASUREMENT



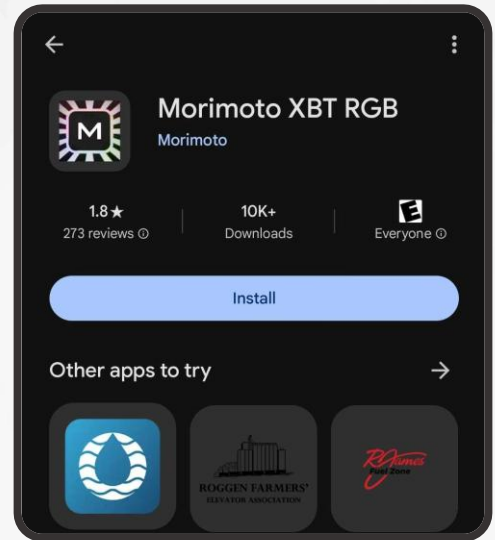
NOTE: AIMING SHOULD NOT REQUIRE MORE THAN THREE FULL TURNS OF THE ADJUSTER IN EITHER DIRECTION. OVER-ADJUSTING THE LIGHT MAY RESULT IN DAMAGE TO THE ADJUSTER

RGB CONTROLLER OPERATION

22. THE RGB DAYTIME RUNNING LIGHT IS CONTROLLED VIA AN APP ON YOUR SMARTPHONE. DOWNLOAD THE FREE MORIMOTO XBT APP TO GET STARTED

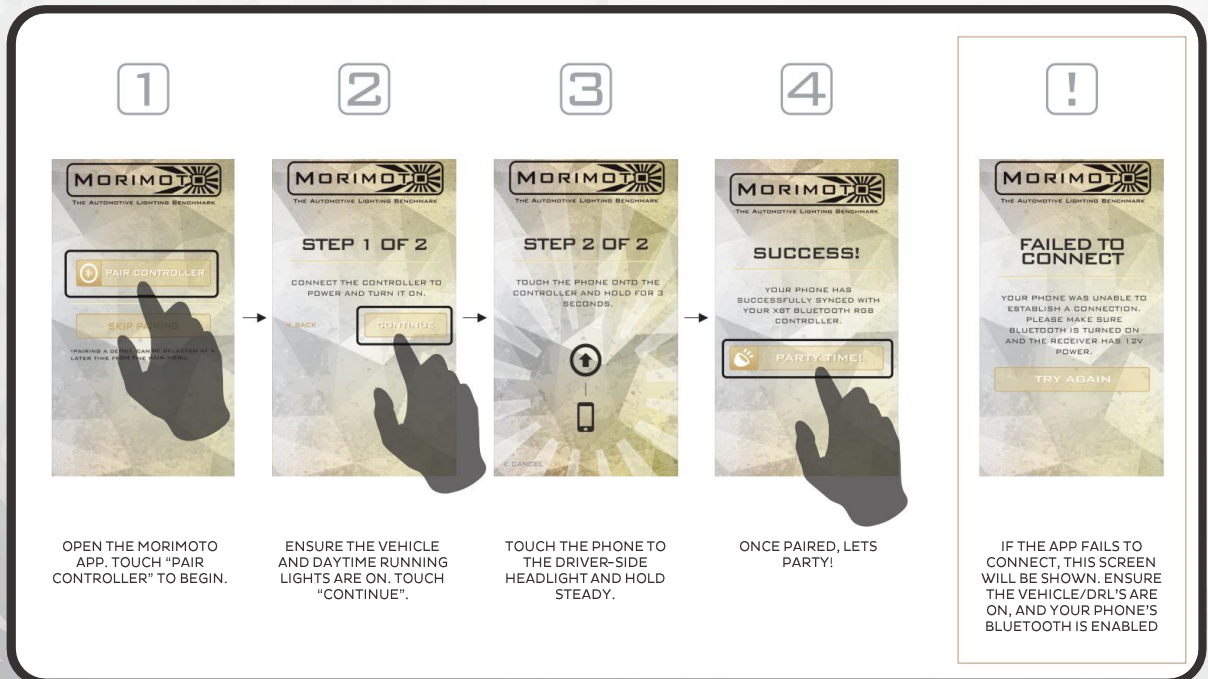


iOS



ANDROID

23. OPEN THE APP AND FOLLOW THE PROMPTS ON THE SCREEN TO PAIR YOUR PHONE TO THE HEADLIGHTS



RGB CONTROLLER OPERATION

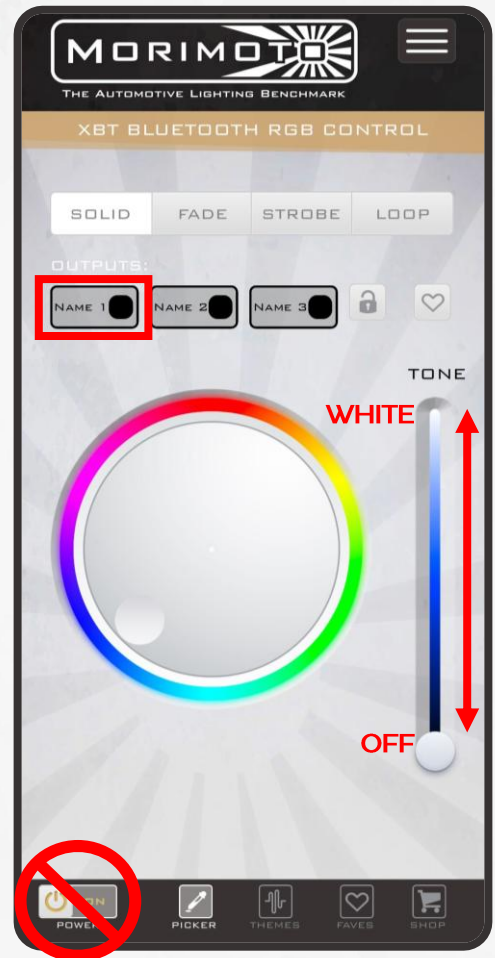
FUNCTION NOTES

MAKE SURE YOUR APP IS SET TO "OUTPUT 1"

TO SWITCH YOUR DAYTIME RUNNING LIGHT TO WHITE, SIMPLY SLIDE THE TONE BAR ON THE RIGHTHAND SIDE OF THE SCREEN ALL THE WAY TO THE TOP

DO NOT USE THE ON/OFF TOGGLE IN THE BOTTOM LEFT TO TURN OFF THE DAYTIME RUNNING LIGHT AS THIS WILL TURN OFF THE CONTROLLER ENTIRELY. VEHICLE IGNITION WILL NEED TO BE CYCLED OFF AND BACK ON TO POWER THE CONTROLLER ON AGAIN. IF YOU WOULD LIKE TO TURN THE DAYTIME RUNNING LIGHT STRIP OFF, SLIDE THE TONE BAR ON THE RIGHTHAND SIDE OF THE SCREEN ALL THE WAY TO THE TOP

THE CONTROLLER IS DESIGNED SO THAT WHEN THE VEHICLE IS TURNED ON, THE DAYTIME RUNNING LIGHT WILL DEFAULT TO THE COLOR IT WAS LAST SET TO



XRGB EVO HEADLIGHTS: DODGE RAM (09-18)



- ENJOY YOUR NEW MORIMOTO XRGB HEADLIGHTS! -

