



BRIGHT IS ONLY THE BEGINNING

INSTALL GUIDE

BANGER FOG BRACKETS: TYPE SD OE-LED

BAF256



WARNING: IT IS THE INSTALLERS RESPONSIBILITY TO CONFIRM COMPLIANCE WITH STATE AND LOCAL LAWS. BY READING THIS DOCUMENT, YOU AGREE IT IS ONLY TO BE USED AS AN EDUCATIONAL GUIDE. MORIMOTO LIGHTING NOR ITS DEALERS MAKE GUARANTEES ON ANY FINISHED RESULTS, NOR ARE THEY TO BE HELD RESPONSIBLE FOR ANY DAMAGE, MISUSE, OR PERSONAL INJURIES. IF YOU ARE UNABLE TO CLEARLY UNDERSTAND AND ADAPT THE INFORMATION BELOW, PROFESSIONAL INSTALLATION IS RECOMMENDED.



BANGER FOG BRACKETS: TYPE SD OE-LED

TABLE OF CONTENTS

PAGE

BRACKET ASSEMBLY-----	3
DISASSEMBLY-----	5
INSTALLATION-----	7
AIMING-----	9

WHAT'S INCLUDED



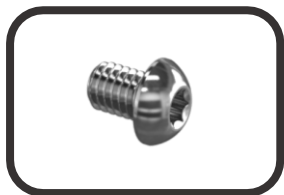
2X (PAIR) FOG LIGHT
BEZELS



2X (PAIR) BANGER
BRACKETS



2X 1<3 FOG LIGHT
SPLITTERS



6X T20 TORX SCREWS



6X WASHERS



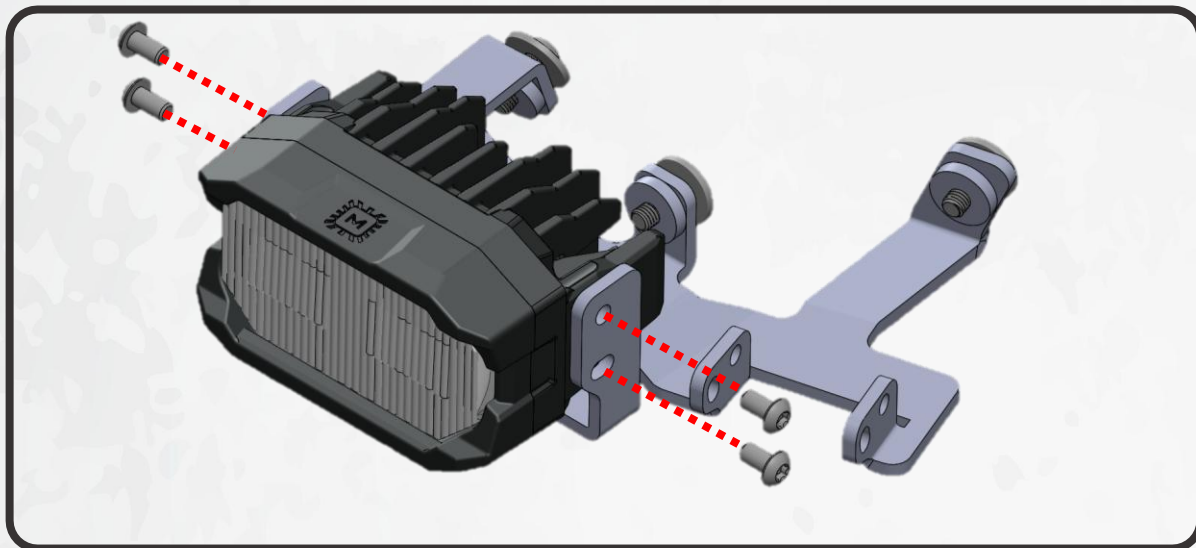
REQUIRED TOOLS

- SMALL PRY TOOL
- RATCHET
- 15MM SOCKET
- EXTENDED T20 TORX DRIVER
- PLASTIC TRIM REMOVAL TOOL

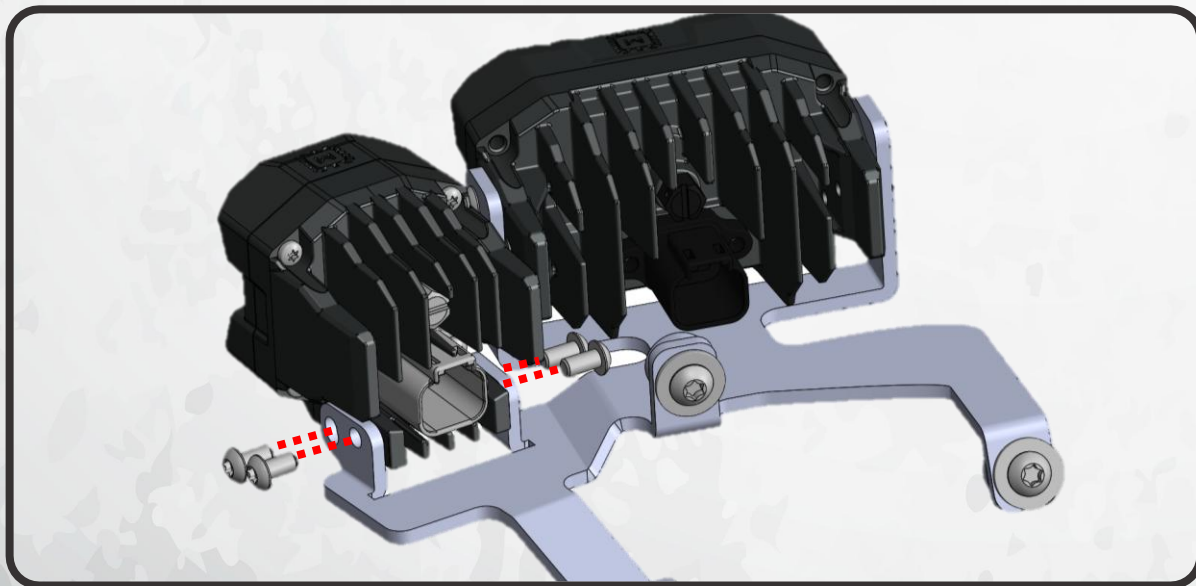


BRACKET ASSEMBLY

1. BEGIN BY INSTALLING YOUR 2BANGER ONTO THE BRACKET USING FOUR OF THE T20 TORX HEAD SCREWS INCLUDED WITH THE 2BANGERS. LOOSELY HAND TIGHTEN TO ALLOW FOR AIMING LATER



2. INSTALL THE 1BANGER ONTO THE BRACKET USING FOUR OF THE T20 TORX HEAD SCREWS INCLUDED WITH THE 1BANGERS, AGAIN, LOOSELY HAND TIGHTENING TO ALLOW FOR AIMING LATER. YOU WILL NEED TO USE A LONG T20 TORX BIT TO REACH THE INNER TWO SCREWS



3. REPEAT STEPS 1 AND 2 ON THE OTHER BRACKET

BRACKET ASSEMBLY

4. WITH THE INCLUDED FOG LIGHT SPLITTER, YOU HAVE THE OPTION OF TYING THE 1BANGER AND 2BANGER INTO YOUR FACTORY FOG LIGHT. TO DO THIS, CONNECT THE SPLITTER TO THE PODS ON EACH BRACKET AS SHOWN BELOW



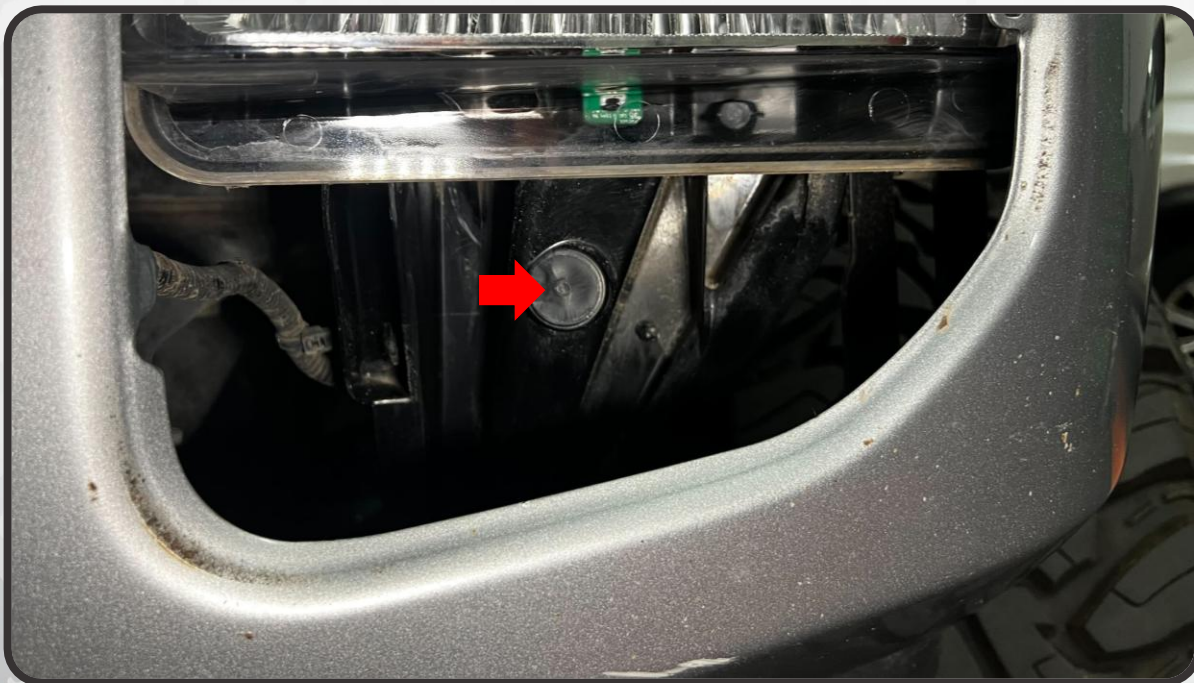
ALTERNATELY, IF YOU DO NOT WANT TO TIE THE 1BANGER AND 2BANGER INTO YOUR FACTORY FOG LIGHTS, YOU CAN WIRE THEM UP AS TRADITIONAL POD LIGHTS USING TWO MORIMOTO 2-POD POWER HARNESSSES (SOLD SEPARATELY)

DISASSEMBLY

- MOVING TO THE TRUCK, USE A PLASTIC PRY TOOL/TRIM REMOVAL TOOL TO PRY THE FOG LIGHT BEZEL OFF OF THE BUMPER OF THE TRUCK. THERE ARE THREE CLIPS THAT WILL RELEASE AS YOU DO. SET THE BEZEL ASIDE

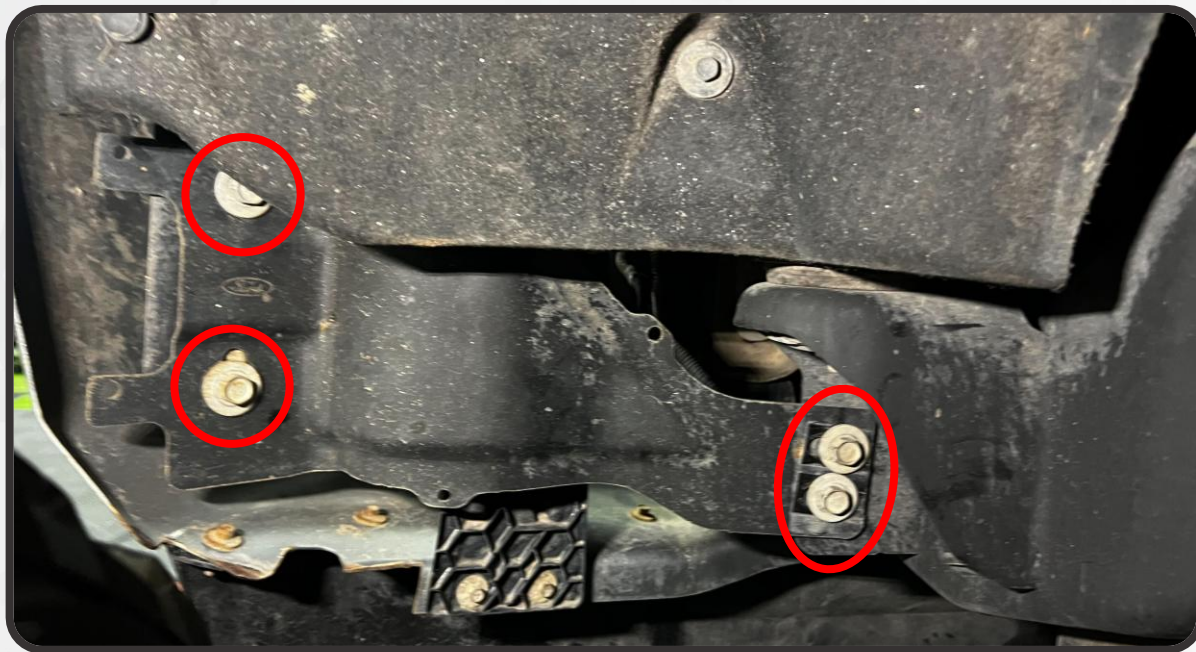


- LOCATE THE CIRCULAR MARK ON THE FOG LIGHT BRACKET AND DRILL A 1/4" HOLE IN THE CENTER OF IT. THIS CAN BE DONE FROM THE FRONT, HOWEVER YOU CAN REMOVE THE BRACKET FIRST IF YOU PREFER

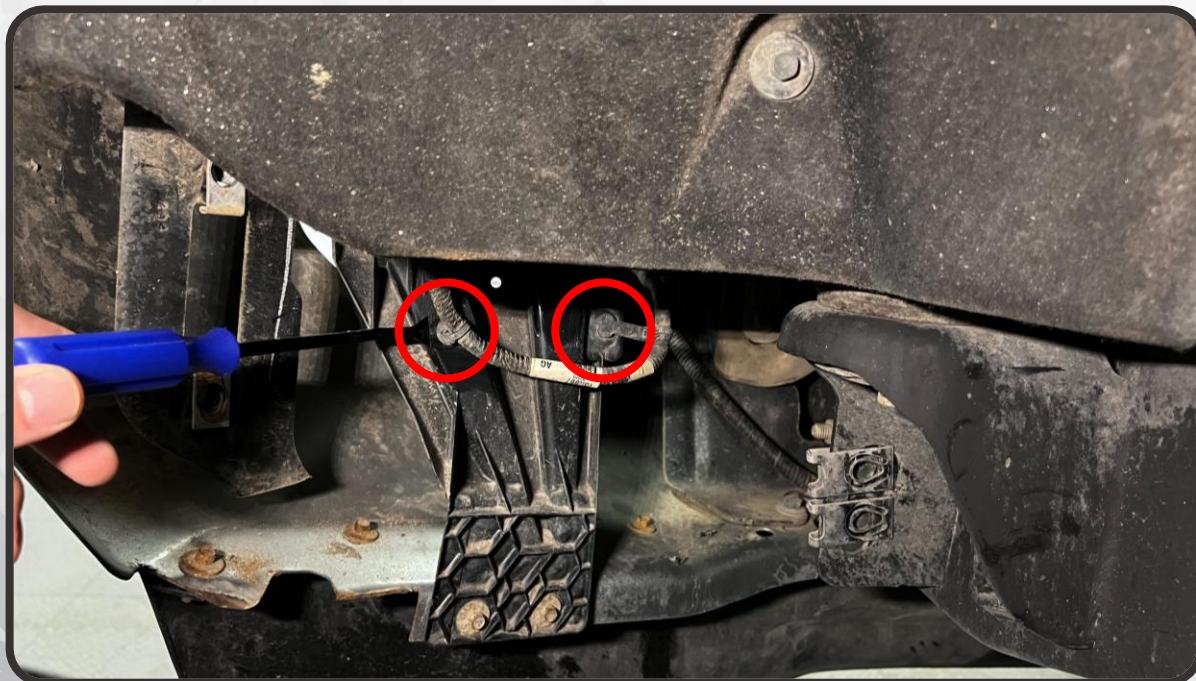


DISASSEMBLY

- MOVING TO THE BACK-SIDE OF THE BUMPER, REMOVE FOUR 15MM BOLTS SECURING THE STEEL PLATE BEHIND THE FOG LIGHT AND SET THE STEEL PLATE ASIDE



- USING A SMALL PRY TOOL, PRY OUT THE TWO WIRE HARNESS CLIPS FROM THE BACK OF THE FOG LIGHT BRACKET

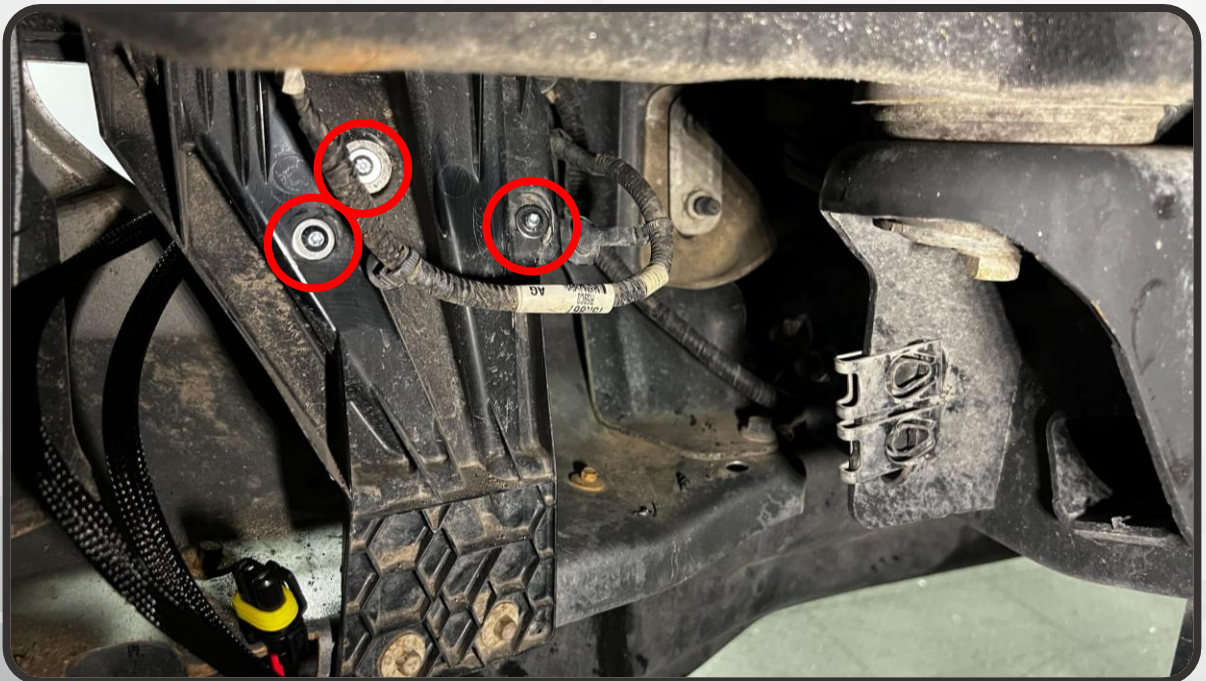


INSTALLATION

9. PLACE THE BRACKET IN THE FOG LIGHT CAVITY AND ALIGN THE THREE THREADED HOLES WITH THE HOLE YOU DRILLED, AND THE TWO HOLES YOU PRYED THE HARNESS CLIPS OUT OF

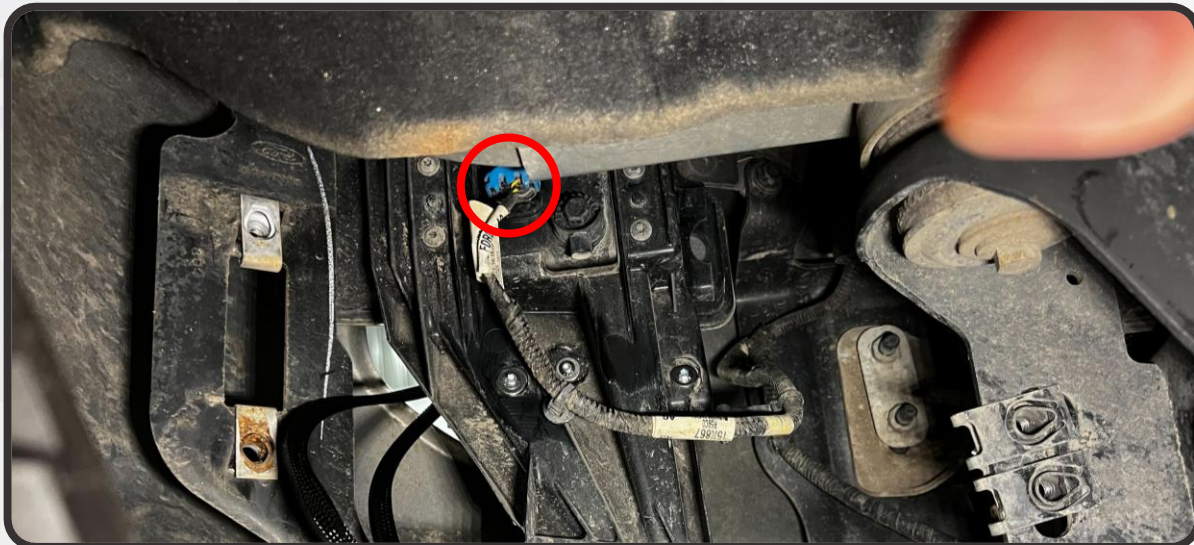


10. INSTALL THE THREE INCLUDED T20 TORX SCREWS AND WASHERS THROUGH THE HOLES AND INTO THE BRACKET. TIGHTEN THEM ALL DOWN UNTIL HAND-TIGHT

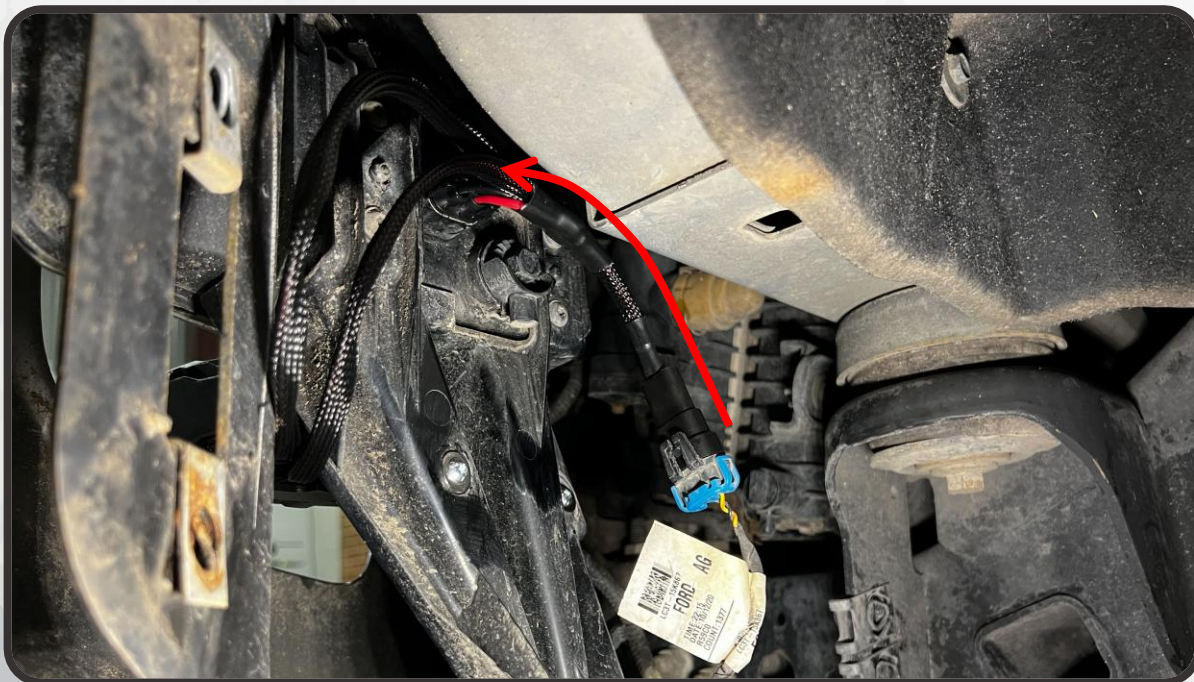


INSTALLATION

11. IF YOU'RE INSTALLING THE INCLUDED FOG LIGHT SPLITTER TO TIE THE BRANGER POD LIGHTS INTO YOUR FACTORY FOG LIGHTS, DISCONNECT THE FACTORY PLUG FROM THE FACTORY FOG LIGHT



12. PLUG THE FACTORY FOG LIGHT CONNECTOR INTO THE INPUT ON THE SPLITTER, AND PLUG THE REMAINING OUTPUT ON THE SPLITTER INTO THE FACTORY FOG LIGHT



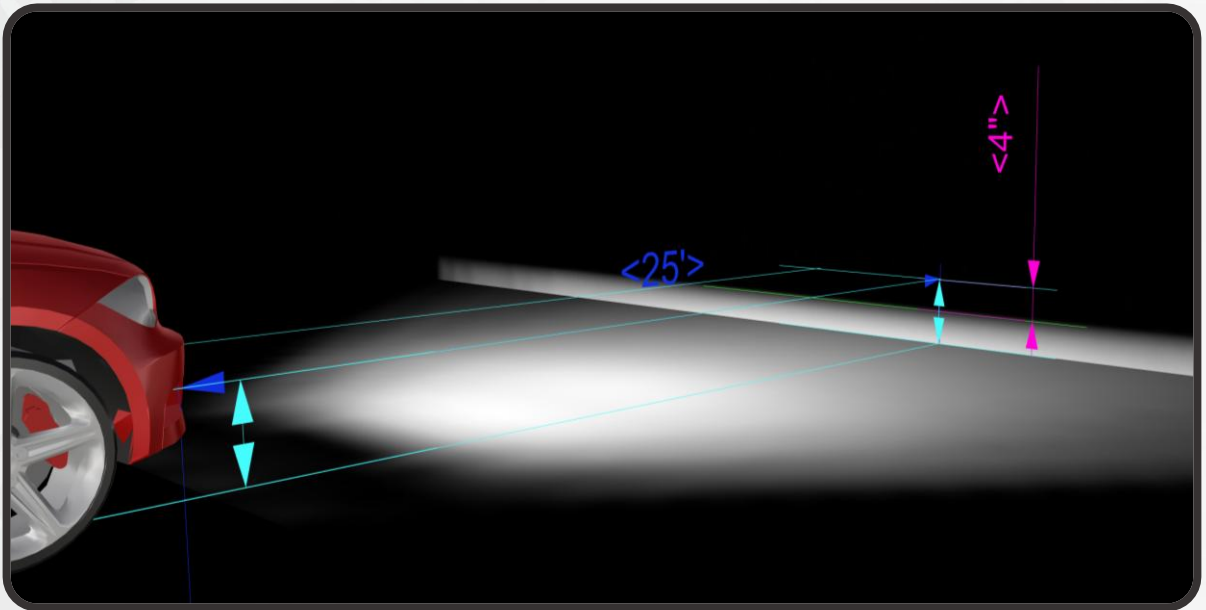
13. REPEAT STEPS 5-12 ON THE OPPOSITE SIDE OF THE VEHICLE



AIMING

14. IF YOU ARE GOING TO BE USING YOUR NEW PODS AS AUXILLARY FOG LIGHTS, FOLLOW THE INSTRUCTIONS BELOW TO PROPERLY AIM THEM. ONCE OU'VE SET THE AIM OF THE LIGHTS, GO BACK AND TIGHTEN DOWN THE SCREWS SECURING THE PODS TO THE BRACKET. IF YOU ARE NOT USING THE PODS AS FOG LIGHTS, SET YOUR AIM AS DESIRED AND TIGHTEN DOWN THE HARDWARE

- WITH THE TRUCK PARKED ON LEVEL GROUND, 25' FROM A WALL, MEASURE THE DISTANCE FROM THE GROUND TO THE CENTER OF THE FOG LIGHT, AND THE DISTANCE FROM THE GROUND TO THE TOP OF THE LIGHT'S BEAM ON THE WALL. THERE SHOULD BE A 4" DROP FROM THE CENTER OF THE FOG LIGHT ON THE TRUCK, TO THE TOP OF THE BEAM ON THE WALL



INSTALLATION

15. USING A SMALL PRY TOOL, PRY OFF THE THREE CLIPS FROM THE TABS ON THE BACK OF THE OEM FOG LIGHT BEZEL



16. TRANSFER THE THREE CLIPS OVER TO THE CORRESPONDING TABS ON THE NEW FOG LIGHT BEZEL



INSTALLATION

17. SNAP THE FRONT FOG LIGHT BEZELS ONTO THE BUMPER
18. REINSTALL THE STEEL BRACKET BEHIND EACH OF THE FOG LIGHTS USING THE FACTORY HARDWARE



- ENJOY YOUR NEW MORIMOTO FOG LIGHTS! -

