

2005-12 PORSCHE 997 XB LED HEADLIGHTS INSTALL GUIDE

WARNING: By reading this document, you agree it is only to be used as an educational guide. Morimoto Lighting nor its dealers make guarantees on any finished results, nor are they to be held responsible for any damage, misuse, or personal injuries. If you are unable to clearly understand and adapt the information below, professional installation is recommended.

PACKAGE CONTENTS



2X HEADLIGHT ASSEMBLIES



1 X DRL HARNESS

IMPORTANT: If your vehicle is equipped with anything but OEM turn signals (full assemblies, LED bulbs, or otherwise) in the tail lights or elsewhere: You may experience a hyper flash and/or problem with the sequential signal setting on these headlights. This is not a defect in the headlight, and caused by un-matched impedance with your original vehicle settings.

THESE MORIMOTO HEADLIGHTS ARE DESIGNED TO PROPERLY FUNCTION ON 997.1 AND 997.2 WITH OEM SINGLE PROJECTOR HEADLIGHTS. THESE MORIMOTO HEADLIGHTS WILL WORK ON 997'S WITH OEM DUAL PROJECTOR HEADLIGHTS BUT YOU WILL GET A FEW ERROR CODES THAT SOME PROFESSIONAL SHOPS WITH THE PROPER SOFTWARE MAY BE ABLE TO CODE OUT OF THE CAR.

2005-2012 PORSCHE 997



TABLE OF CONTENTS

- INSTALLATION PROCESS PAGE 3
- PROGRAMMING DRL MODULE PAGE 9

REQUIRED TOOLS

- RATCHET
- 10MM SOCKET
- 5MM ALLEN HEAD SCREWDRIVER LONG
- OEM HEADLIGHT REMOVAL TOOL (LOCATED IN OEM TOOL CASE)
- WIRE SNAKE

INSTALLATION PROCESS

1. Open your hood. Starting on the passenger side rotate this plastic clip counter clockwise while gently pulling the liner away from the sheet metal. Note: once unscrewed the plastic clip should hold itself in the liner.



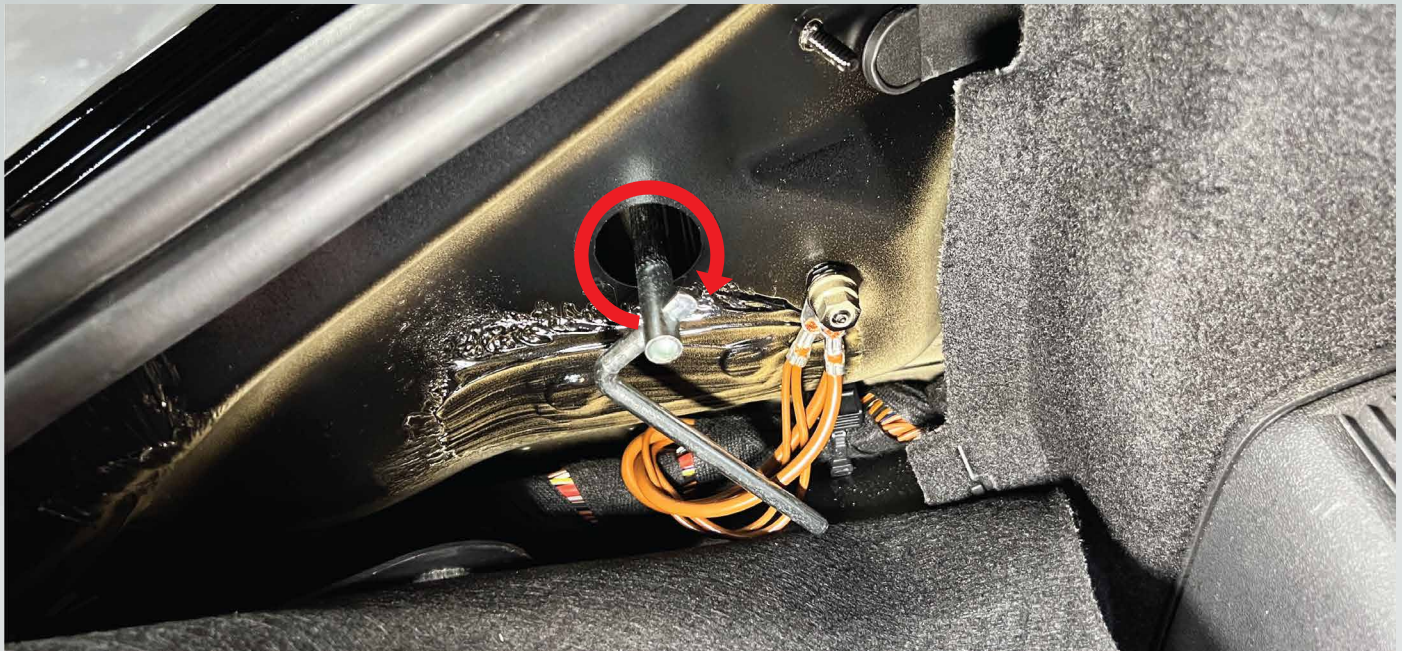
2. With the liner pulled back, remove this rubber plug. Do this by simply pulling it away from the sheet metal. Repeat steps #1, 2 on the other side of the car.



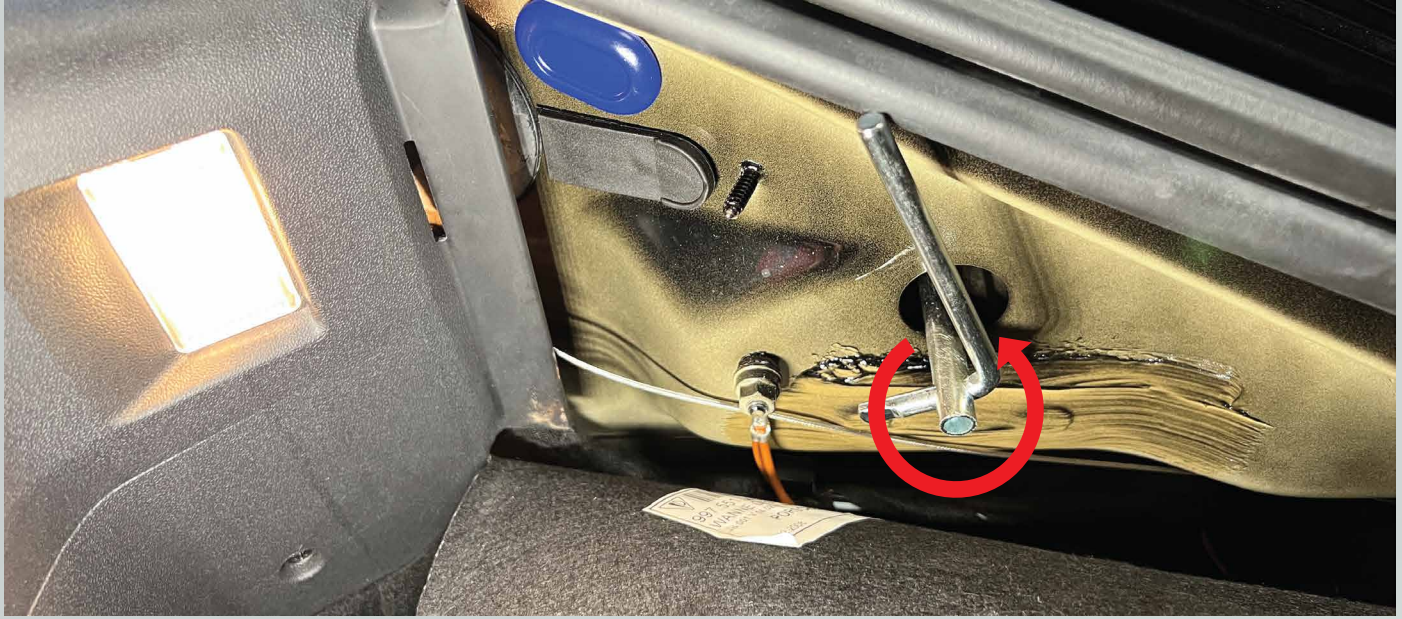
3. Pull out your factory tool kit located under the floor of your front baggage compartment. Slide the tool kit open and pull out the headlight removal tool.



4. Starting on the passenger headlight, insert the headlight removal tool into the hole that had the rubber plug. Note that inserting the headlight removal tool might take a few tries for it to seat on the bolt head. With the tool correctly seated, rotate the tool clockwise approximately 90 degrees til the headlight pops forward. Then simply slide the headlight forward away from the car and set the headlight to the side.



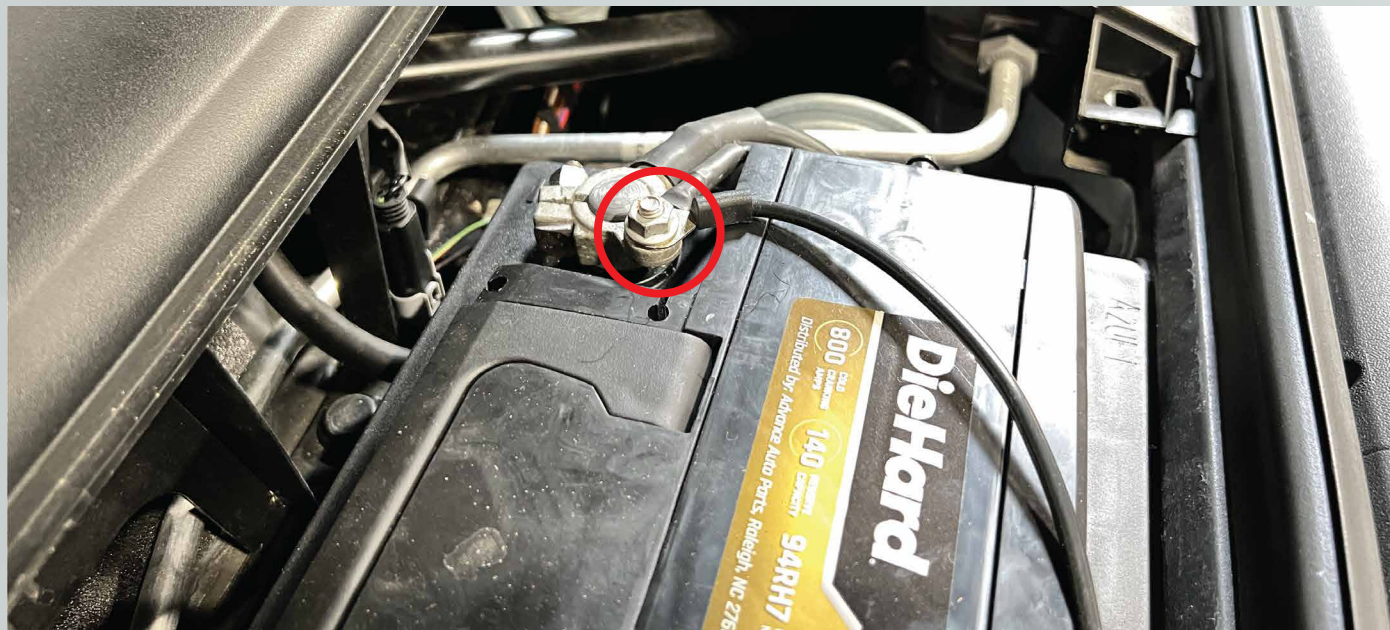
5. On the driver side headlight, insert the headlight removal tool. Rotate the tool counter clockwise about 90 degrees til the headlight pops forward. Then simply slide the headlight forward away from the car and set the headlight to the side.



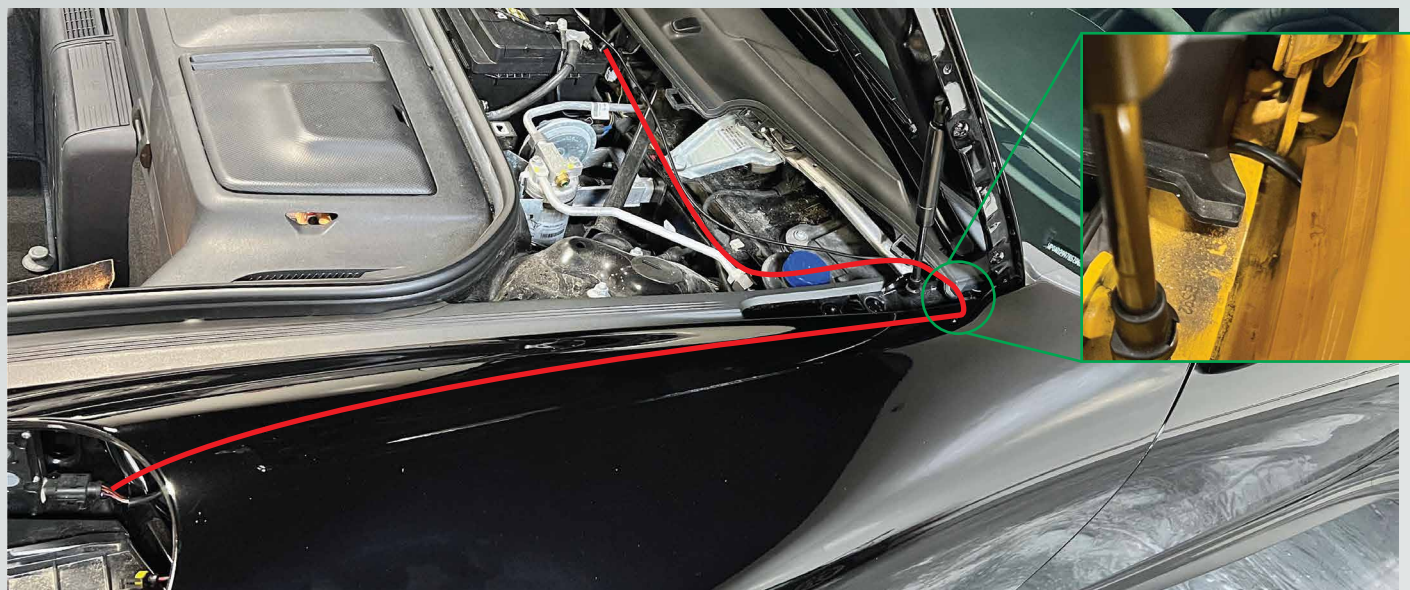
6. Remove the battery cover by rotating the two (2) plastic screw 90 degrees counter clockwise. Then simply pivot the front edge of the battery cover up and take the battery cover out of the car. Then remove the panels labeled #1, #2 in the picture. To remove them simply lift them up and out of the car.



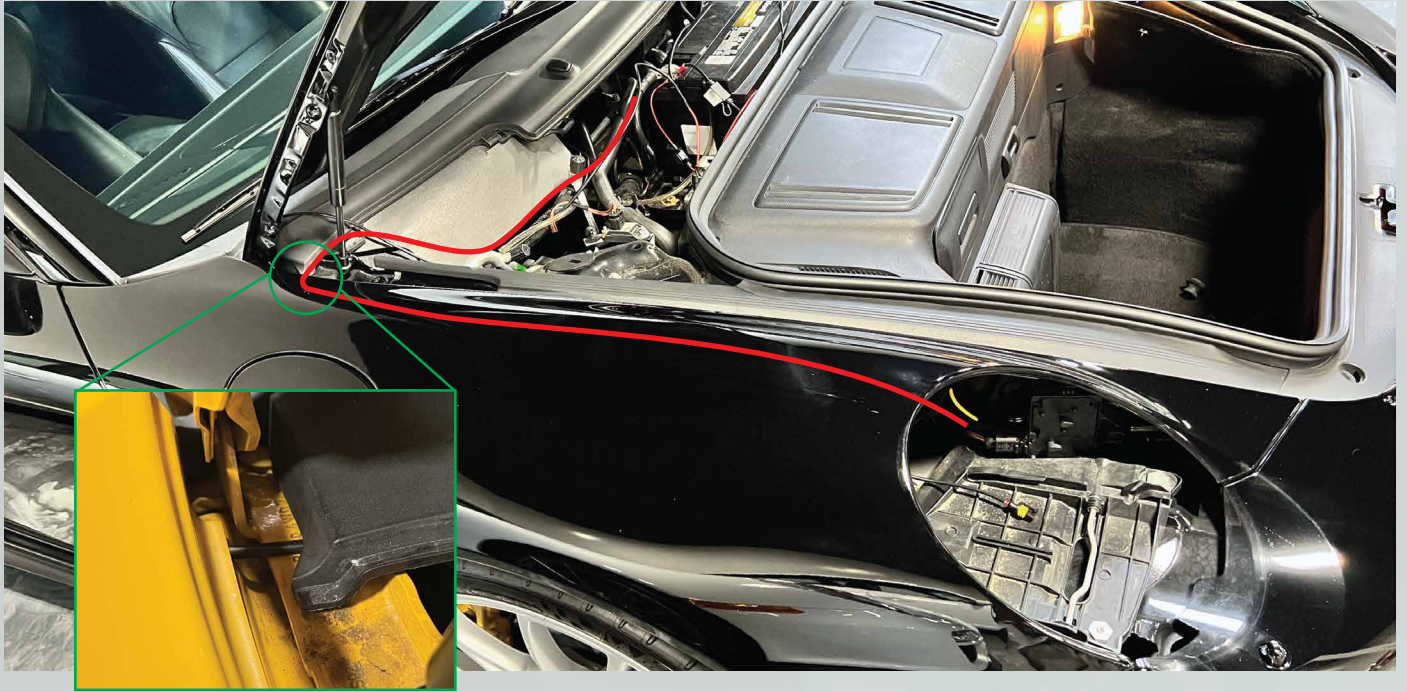
7. Locate the included DRL harness, loosen the 10mm nut on top of the negative terminal on the battery. Then install the negative wire of the DRL harness (the wire without the inline fuse) to the negative terminal of the battery. Tighten the 10mm nut. DO NOT INSTALL THE POSITIVE WIRE OF THE DRL HARNESS YET.



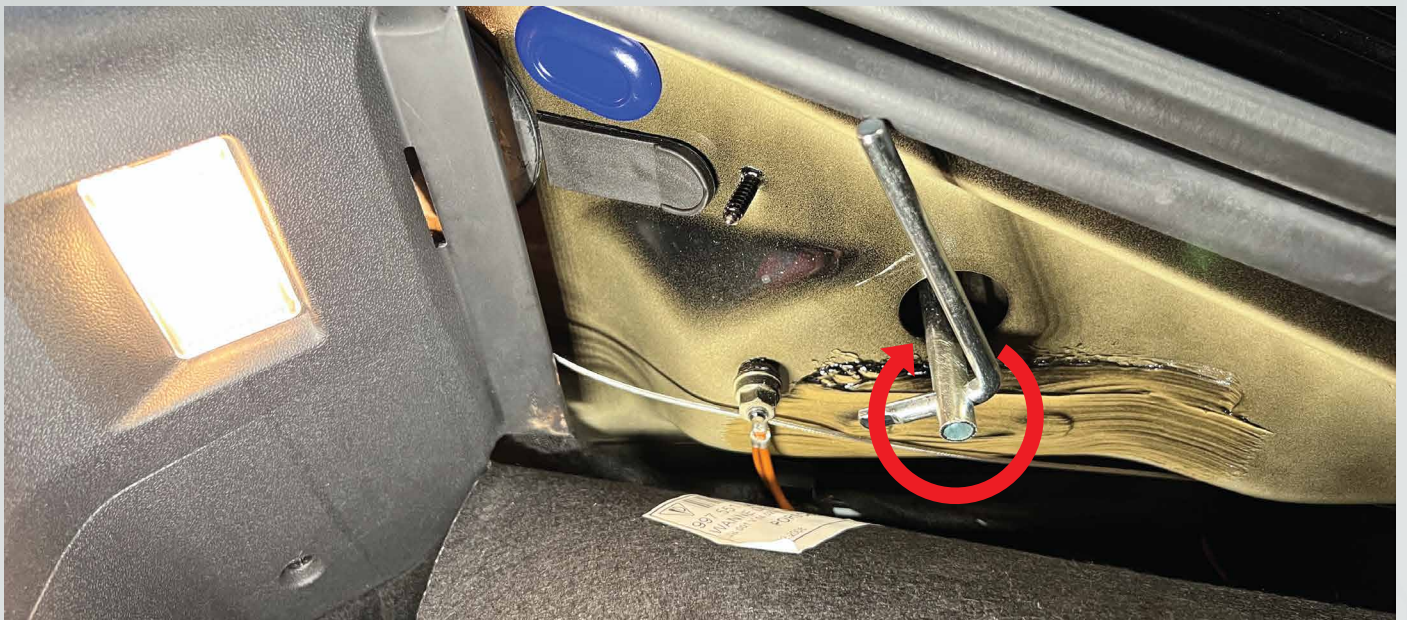
8. Route the driver side DRL harness as pictured below. Run it under the windshield cowl and into the inside of the fender. using a wire snake run it along the top channel on the inside of the fender.



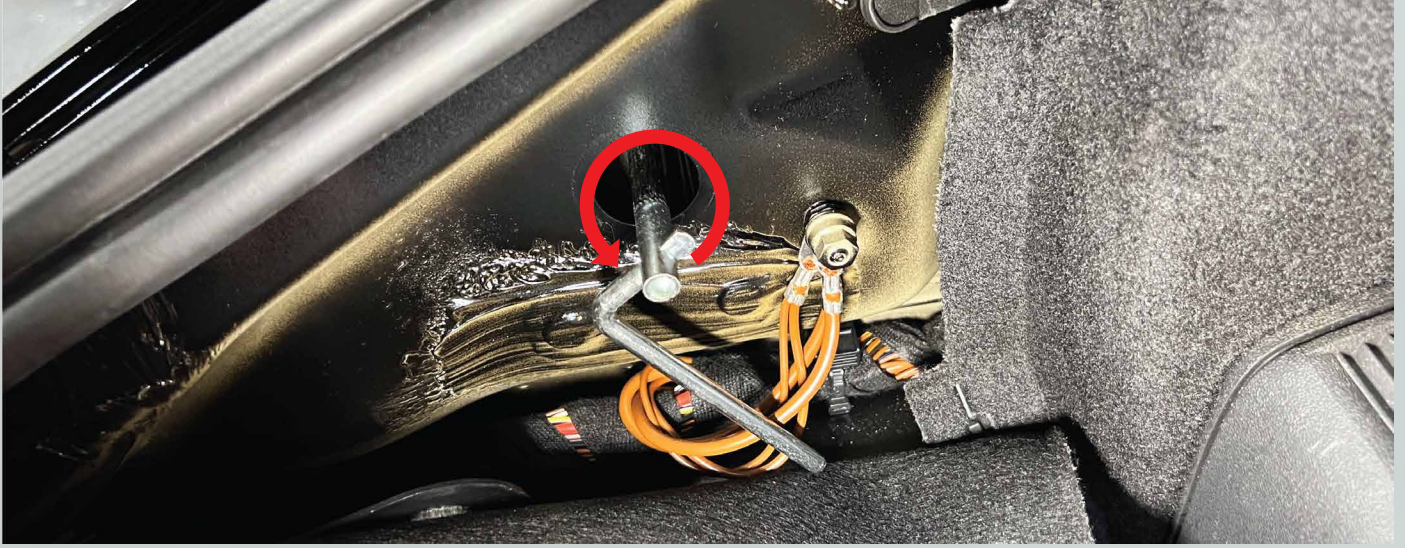
9. Route the passenger side DRL harness as pictured below. Run it under the windshield cowl and into the inside of the fender. using a wire snake run it along the top channel on the inside of the fender.



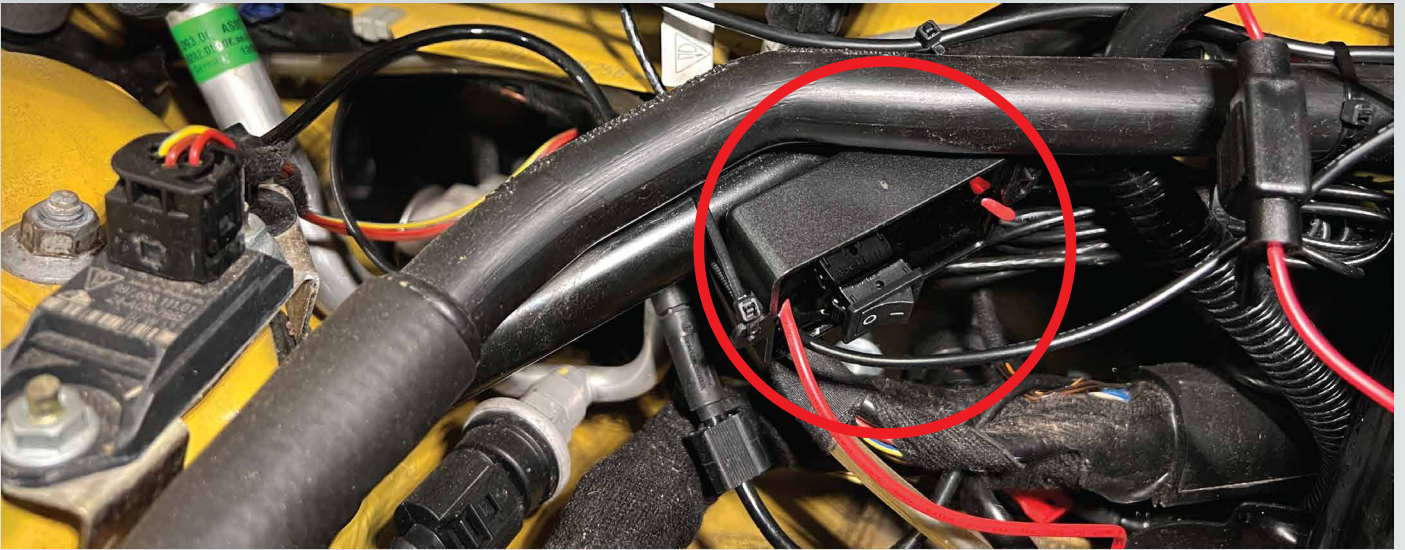
10. With the headlight removal tool still inserted on the driver side, grab your driver side Morimoto headlight, bring it to the car and plug in the DRL harness. Next line up the guide pins on the sides of the headlight with the channels on the vehicle and slide the headlight into it's place. With one hand turn the tool clockwise while pressing the headlight into the fender with the other hand. Carefully turn the tool til you hear a pop sound.



11. Transfer the headlight removal tool to the passenger side, grab your passenger side Morimoto headlight, bring it to the car and plug in the DRL harness. Next line up the guide pins on the sides of the headlight with the channels on the vehicle and slide the headlight into it's place. With one hand turn the tool counter clockwise while pressing the headlight into the fender with the other hand. Carefully turn the tool til you hear a pop sound.



12. Locate the switch on the DRL harness control box and make sure that it is switched to the "O" OFF position. Next secure the DRL module to the strut bar with zip ties. The goal is to keep objects away from the switch.



13. Next loosen the 10mm nut on the positive terminal of the battery, install the positive wire of the DRL harness and tighten the nut.



PROGRAMMING DRL MODULE (READ THROUGHT INSTRUCTIONS BEFORE PROCEEDING)

14. Go inside the car, set your headlight switch to the "OFF" position. Start the vehicle and let it idle for 3 minutes. NOTE: THE DRL'S WILL BE "ON" IN THE HEADLIGHTS.



15. After the vehicle has idled for 3 minutes, go under the hood. Flip the switch on the DRL Module to ON "I" for 5 seconds, then flip it back to the OFF "O" position. While in the ON position you will notice that the DRL LEDs in the headlights will flicker.



16. Turn the car OFF, then go under the hood and remove the fuse from the fuse holder. Leave the fuse out for 1 minute. After a minute put the fuse back in the holder.

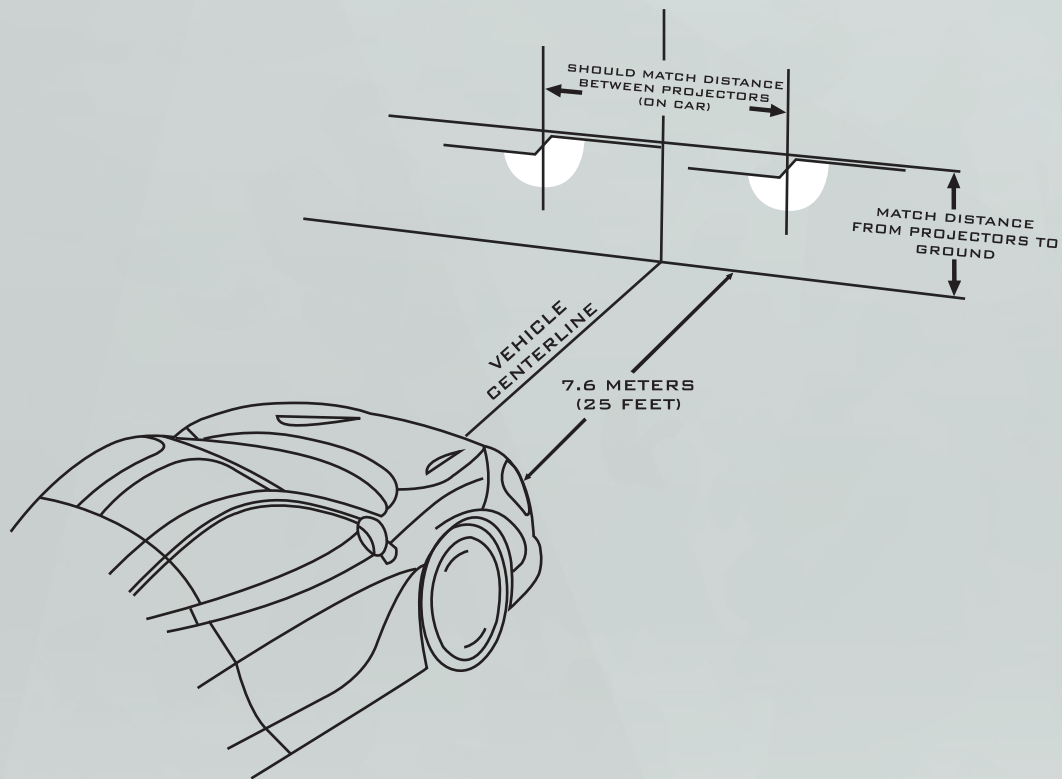


17. Turn the car ON to check if the DRL is working properly (it may take up to 10 seconds for the DRL to turn ON). Go through the other headlight functions to make sure they are working properly.

18. Before reassembling your car, get a long 5mm Allen head screwdriver and insert it into this opening to adjust the headlight beam height. Rotate it clockwise to move the headlight beam up, or turn it counter clockwise to move the headlight beam down. (refer to the next page for an aiming reference)



- Please refer to the aiming standards below when adjusting your headlight beam.



15. Reassemble the liners and panels in your fronk.

— ENJOY YOUR NEW MORIMOTO HEADLIGHTS! —

