



TRAILARMOR.COM
839 HWY 2 CORINTH, MS 38834
(662) 233-5700

Installation Instructions

Trail Armor Can Am Maverick Sport Mud Flap Fender Extensions TAMFFE-CAMSPT

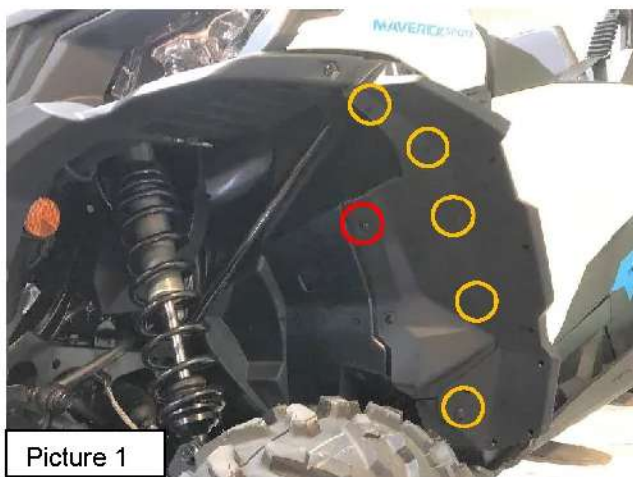
Warnings and Product Liability Disclaimer

This product is intended to be used as a cosmetic accessory under normal equipment operation and should not be depended upon or used as a safety device. Manufacturer assumes no liability for personal injury or equipment damage as the result of use or installation of this accessory. User assumes all risk. User should carefully read all instructions prior to installation. All Trail Armor products are designed, engineered, and fit to new vehicles and their specifications. Damage, modifications, and extreme wear may cause and require modifications to the product and/or your vehicle to insure proper fitment.



Instructions

FRONTS



Picture 1



Picture 1A

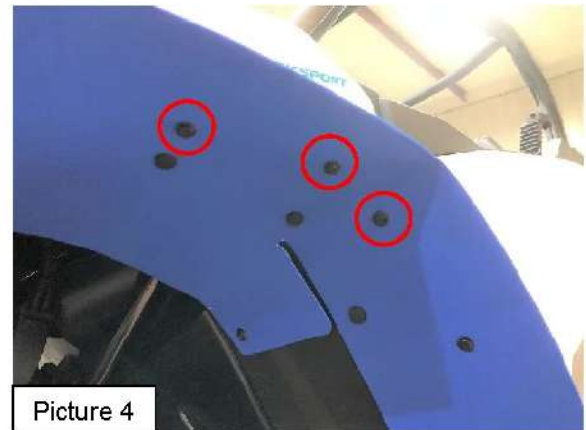
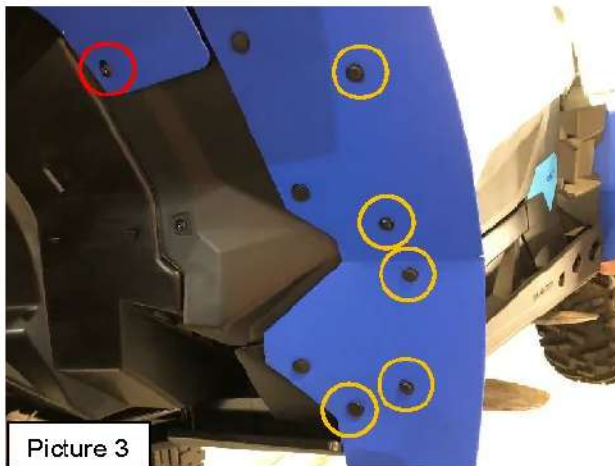
- A. Before starting installation of the front extensions, remove five OEM push-pins (shown in **YELLOW**) and one OEM screw, washer, and nut (shown in **RED**). See Picture 1 and 1A. The OEM screw will have a 10 mm nut on the inside of the cab. Retain all hardware as it will be reused. Locate the driver



TRAILARMOR.COM
839 HWY 2 CORINTH, MS 38834
(662) 233-5700

Installation Instructions

side front flare of the Trail Armor extensions. Holding the extension at the front of the vehicle, align the mounting hole of the extension with the hole where the OEM screw was removed. Insert the OEM screw and washer back into place. Replace the 10 mm nut. Loosely tighten. Starting at the bottom of the extension, reuse the five OEM push-pins into the outer holes of the extension. See Picture 3.



- B. Locate three supplied short push-pins. Working from the last installed push-pin, insert three into the next three outer holes. See Picture 4.



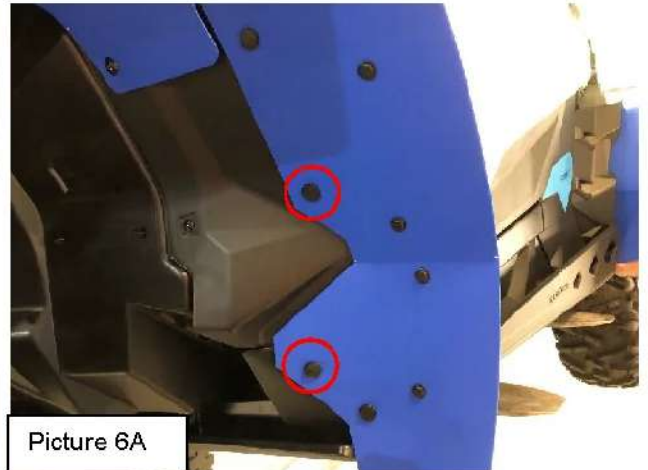
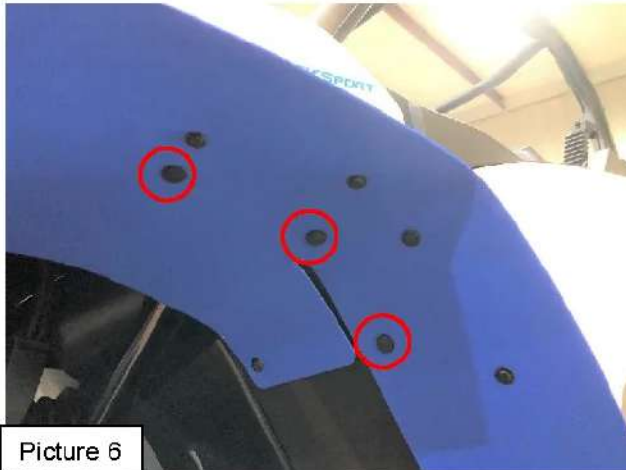
- C. Locate two supplied short push-pins. Install one into the next outer hole. The frontmost hole will have to be drilled out. **Using a 5/16" drill bit, CAREFULLY drill through the lower part of the extension. Drill SLOWLY, DO NOT FORCE, as to not drill through the upper part of the extension underneath the headlight!**



TRAILARMOR.COM
839 HWY 2 CORINTH, MS 38834
(662) 233-5700

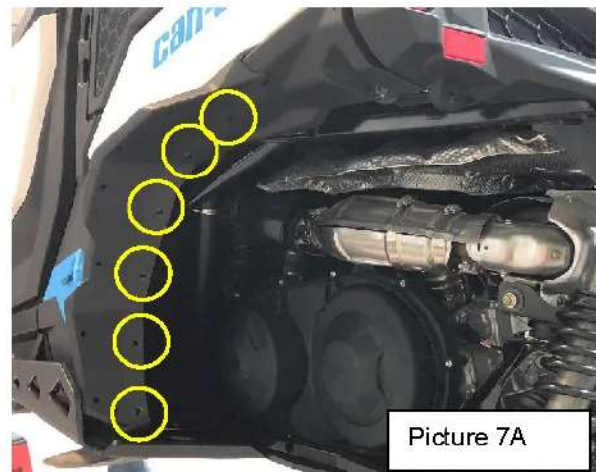
Installation Instructions

- D. Insert the remaining short push-pin into the previously drilled hole. See Picture 5.
- E. Locate five supplied long push-pins. Insert these into the remaining holes of the extension. See Pictures 6 and 6A. Tighten the OEM screw and nut. Repeat for the opposite side.



REARS

- F. Before installation of the rear extensions, locate the 10 mm OEM screw, washer, and nut at the rear of the vehicle. Remove and retain. Also, locate six OEM push-pins. Remove. They will be reused also. See Picture 7 and 7A. Locate the driver rear extension. Holding the extension into position, with the bracket behind the tab, re-insert the 10 mm screw and washer through the bracket, through the tab, and secure with the nut. Loosely tighten.





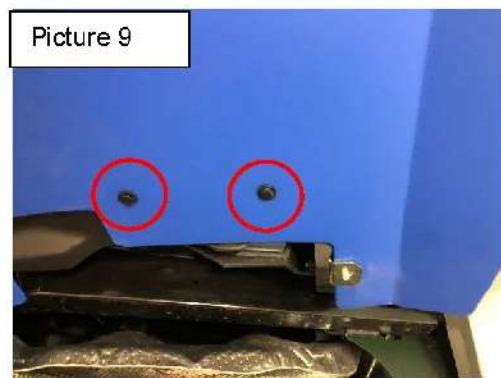
TRAILARMOR.COM
839 HWY 2 CORINTH, MS 38834
(662) 233-5700

Installation Instructions

- G. Starting at the bottom, re-insert the six OEM push-pins into the outer holes. See Picture 8. Locate two supplied short push-pins. Insert these into the two remaining outer holes (all shown in **RED**). Also, locate six long push-pins. Insert the long push-pins into the holes as shown in Picture 8 (shown in **YELLOW**). Picture 8 shows a cab insert which has been discontinued.



Picture 8



Picture 9

- H. Tighten the 10 mm OEM screw and nut. Refer back to Picture 7.
I. Locate two supplied short push-pins. As done on the fronts, the two holes between the last push-pin installed and the 10 mm screw will need to be drilled out. Using the 5/16" drill bit, CAREFULLY drill out the holes and insert the two push-pins. See Picture 9. Repeat Steps F-I for the opposite side.