



Installation Instructions for 2019 Polaris RZR XP 1000, RZR XP 4 1000, RZR TURBO S, and RZR TURBO 4 S Mud Flaps Fender Extensions

TARZRMFFE1000-19

Warnings and Product Liability Disclaimer

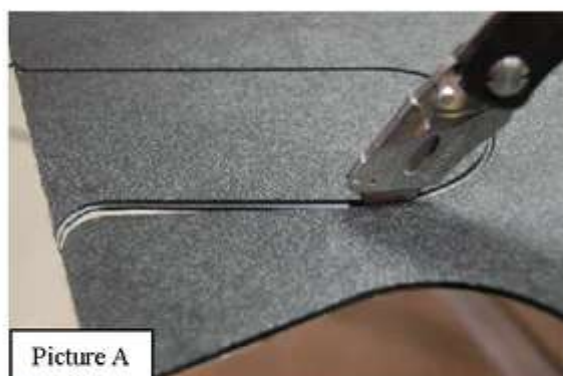
This product is intended to be used as a cosmetic accessory under normal equipment operation and should not be depended upon or used as a safety device. Manufacturer assumes no liability for personal injury or equipment damage as the result of use or installation of this accessory. User assumes all risk. User should carefully read all instructions prior to installation.

Prior to installation, please note that it may be necessary to re-bend by hand the fender extensions to regain angles flattened during warehousing and shipping. You can easily reshape the bends by applying a small amount of heat with a heat gun or hair dryer.



Rear

- A. Before installing the driver's side rear fender extension, note there is a scribe line on the textured side of the fender extension. See Picture #A. Your vehicle is equipped with a breather tube coming from the CV belt cover. For Highlifter editions, you will use the scribe line engraved HL. See Picture #B. Use a utility knife to cut along the appropriate scribe line so it will fit around the belt breather tube. See Pictures #B - #D. Once hole is cut out, follow the remaining installation instructions. They are the same.



Picture A



Picture B

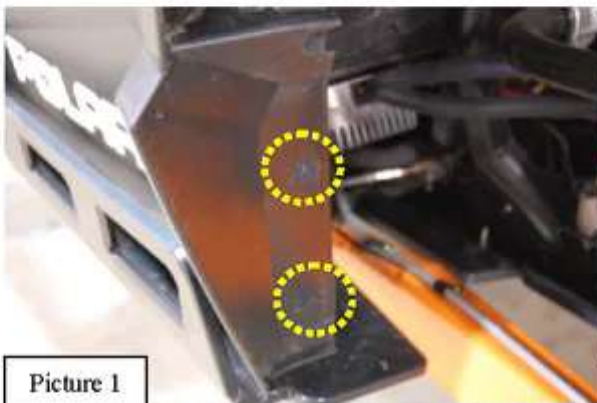


Picture C - 2019



Picture D - Highlifter

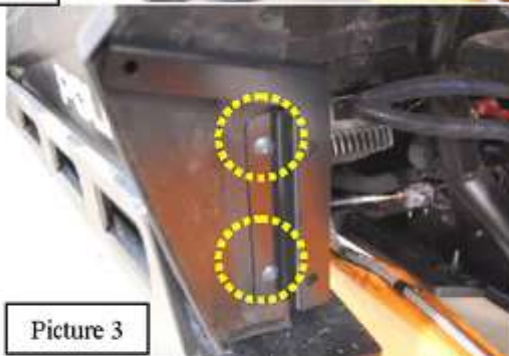
- B. Remove the plastic pins at the bottom of the OEM fender flare. See Picture 1. Clip two supplied $\frac{1}{4}$ -20 u-nuts over holes in OEM body panel behind OEM fender flare. See Picture 2. After installing the u-nuts, locate the left side lower (larger) mounting bracket. Insert two supplied $\frac{1}{4}$ -20 x 1" torx truss bolts through the two outer holes of the bracket into the installed u-nuts. See Picture 3. Once lower bracket is installed, clip three u-nuts over the three pre-drilled holes in the lower bracket. See Picture 4.



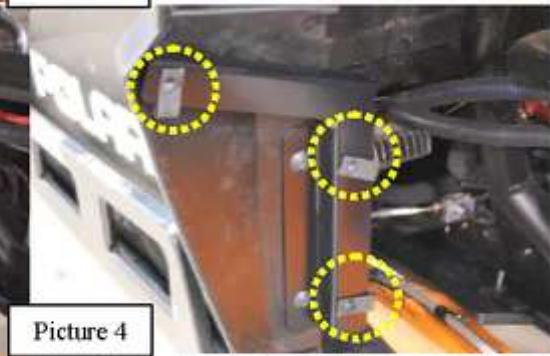
Picture 1



Picture 2

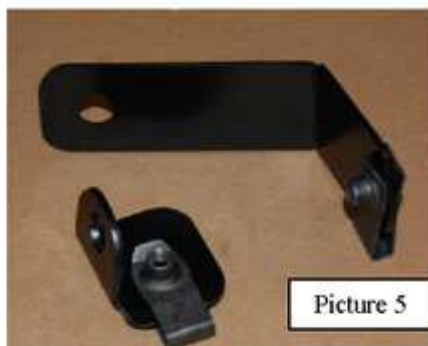


Picture 3



Picture 4

- C. Locate one 3" L bracket and one 1" L bracket. Note: there is a left and right 1" L bracket. See Picture 5. Using two supplied $\frac{1}{4}$ -20 u-nuts, clip one u-nut onto each of the L brackets. See Picture 6.



Picture 5



Picture 6



Picture 7

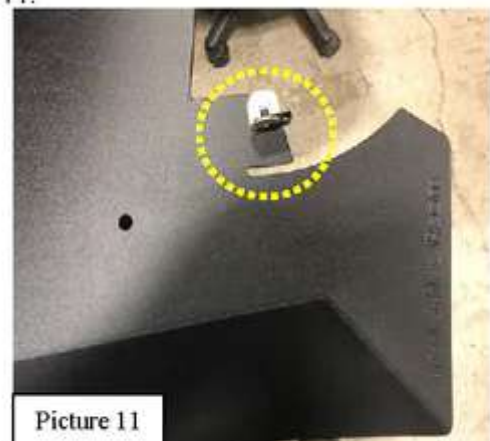
- D. Remove two OEM fender flare bolts and OEM clip nut. See Picture 7 and 7A.



- E. Install removed OEM clip nuts over each hole in the supplied L brackets. Place the 3" L bracket over the lower hole where the OEM bolt was removed. Reinstall OEM bolt through the fender flare into the OEM clip nut previously installed onto L bracket. See Picture 8.
- F. Place the 1" L bracket behind the 2nd removed OEM bolt hole and reinstall the OEM bolt through existing and into the previously installed OEM clip nut. See Picture 9 and 9A for properly installed hardware.



- G. Once hardware is properly installed, remove OEM plastic pin from the rear of the fender flare. See Picture 10. Locate the driver's side rear fender extension. Please note the position or angle the tab is mounted for installation. See Picture 11.





Picture 12

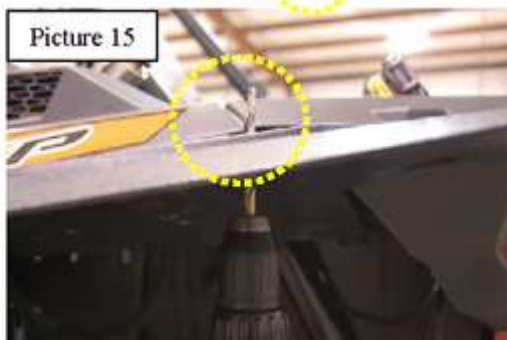
- H. Install a supplied $\frac{1}{4}$ -20 u-nut over the pre-drilled hole in tab. See Picture 12. Hold the fender extension into place. Insert five supplied $\frac{1}{4}$ -20 x $\frac{5}{8}$ " torx truss bolts through the pre-drilled holes of the fender extension into the installed hardware. See Picture 13. Push tab at the rear of the fender extension upward in behind the OEM hole where plastic push pin was removed. Insert one supplied $\frac{1}{4}$ -20 x 1" torx truss bolt through the OEM hole into the tab with installed u-nut. See Picture 14. Do not overtighten. After installing the rear bolt of the fender extension, locate the predrilled hole on the underside of the fender extension. Using a $\frac{5}{16}$ " drill bit, drill up through the OEM fender flare. See Picture 15. Install the supplied $\frac{5}{16}$ -18 X $\frac{3}{4}$ " torx truss bolt down through the drilled hole and install the supplied $\frac{5}{16}$ -18 barrel nut up through the fender extension and onto the installed bolt. See Picture 16 and 17. Do not overtighten. Repeat for other side.



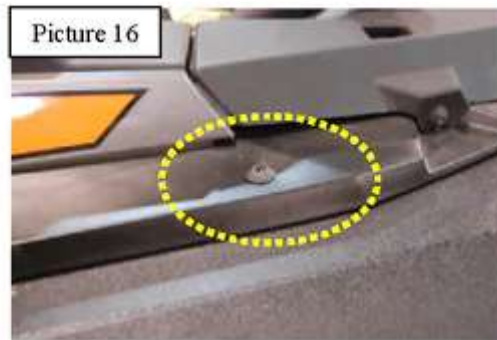
Picture 13



Picture 14



Picture 15

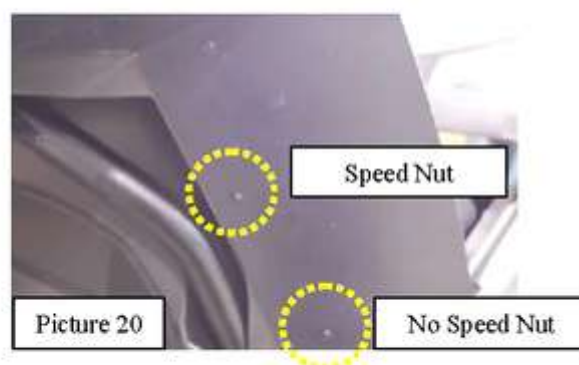
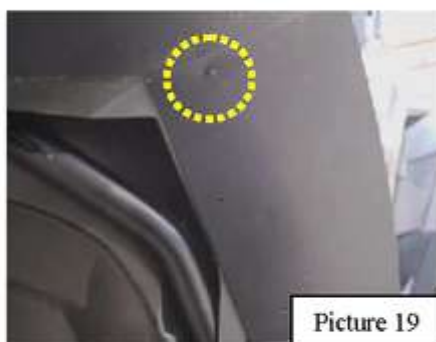
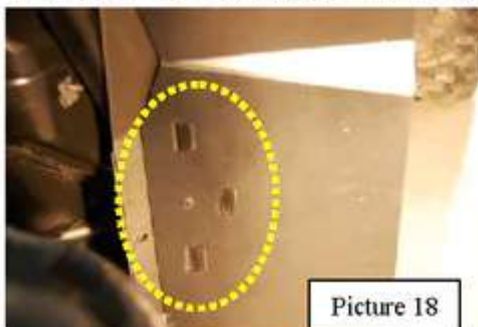


Picture 16



Front

- I. Locate the driver's side front fender extension. Remove the OEM screw underneath the headlight temporarily. It will be reused. Notice the three slotted holes at the lower portion of the fender extension. Place the three slotted holes over the three OEM tabs on the fender flare. Push fender extension inward so that the slotted holes are snug behind OEM tabs. See Picture 18. Insert a supplied #10 x 3/4 Phillips head screw into the pre-drilled hole located near the OEM tabs. See Picture 18. Be sure the bends of the fender extension are fitted and pressed into place to fit the OEM flare properly. Replace the OEM screw into the hole underneath the headlight. See Picture 18B.



- J. Push fender extension tight into the upper bend of fender flare. Be sure inner edge of fender extension is flush with OEM fender flare's inner edge. Insert supplied #10 x 3/4" Phillips head screw and speed nut into the pre-drilled hole on the lower portion of the top bend. See Picture 19. Insert two supplied #10 x 3/4" Phillips head screws and one speed nut into the two lower pre-drilled holes as seen in Picture 20.
- K. At the front pre-drilled hole of the fender extension near the headlight, align the inner edges of both fender extension and OEM panel. Insert #10 x 3/4" Phillips head screw into front hole and install speed nut. See Picture 21. Next, install three #10 x 3/4" Phillips head screws and speed nuts to finish installation of driver's side front fender extension. See Picture 22. Repeat for other side.

