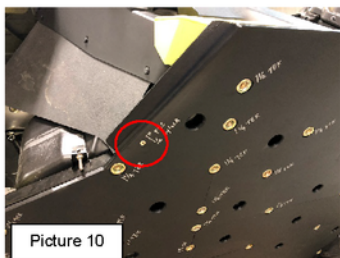




TRAILARMOR.COM
839 HWY 2 CORINTH, MS 38834
(662) 233-5700

Installation Instructions





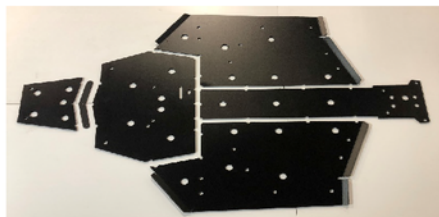
TRAILARMOR.COM
839 HWY 2 CORINTH, MS 38834
(662) 233-5700

Installation Instructions

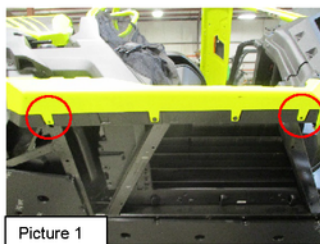
Trail Armor Can Am Defender Full Skids TA012FULLSKID-CAD

Warnings and Product Liability Disclaimer

This product is intended to be used as a cosmetic accessory under normal equipment operation and should not be depended upon or used as a safety device. Manufacturer assumes no liability for personal injury or equipment damage as the result of use or installation of this accessory. User assumes all risk. User should carefully read all instructions prior to installation. All Trail Armor products are designed, engineered, and fit to new vehicles and their specifications. Damage, modifications, and extreme wear may cause and require modifications to the product and/or your vehicle to insure proper fitment.



Instructions



Picture 1



Picture 2

- A. For easier installation, tilt vehicle onto its side and support securely. Remove OEM hardware and skids by drilling out rivets or knock the heads off with a hammer and chisel and center punch the remaining pieces of rivets out. The XMR and XT-P vehicles will have metal rock sliders on them. In these instances, the front and rear pop rivets will need to be removed as well. See Picture 1. Also, the small metal lip on the rear of the front differential plate will need to be hammered (bent) up inside the frame rail for the skid plates to fit properly.



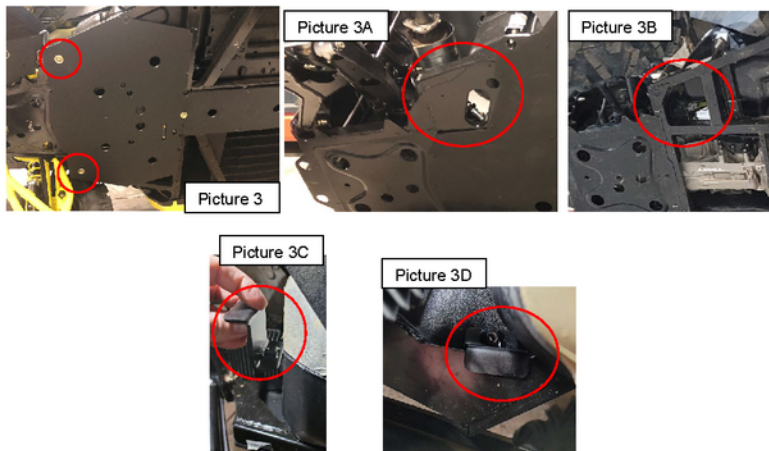
TRAILARMOR.COM
839 HWY 2 CORINTH, MS 38834
(662) 233-5700

Installation Instructions

- B. Locate one supplied #14 x 1-1/4" TEK self-drilling screw and one supplied bowl washer. Insert the screw and bowl washer into the center hole of the rear cross member (shown in GREEN). Loosely tighten. See Picture 2. Locate Panel A of the Trail Armor skids. Locate two supplied 1/4-20 x 3/4" thread cutting screws and two supplied bowl washers. Slide Panel A underneath the screw and bowl washer previously installed and insert the thread cutting screws into the holes behind the front differential (shown in YELLOW). Loosely tighten. Refer back to Picture 2.
- C. Locate two supplied 1/4-20 x 3/4" thread cutting screws, two supplied bowl washers, and two supplied 1/4-20 nylock nuts. Insert the screws and washers through the front holes of Panel A (shown in RED) and secure with the 1/4-20 nylock nuts. Refer back to Picture 2.
- D. Locate Panel B of the skid plates.

If your frame looks like Picture 3A just in front of the rear a-arms. Locate two supplied #14 x 1-1/4" TEK self-drilling screws and two supplied bowl washers. Slide Panel B under the center screw and washer of Panel A. Insert the two 1-1/4" screws and washers into the rear outer holes of Panel B. Loosely tighten. See Picture 3.

If your frame looks like Picture 3B just in front of the rear a-arms. Locate two 1/4"-20x1 Serrated Flange bolts, two supplied bowl washers and two supplied metal brackets stamped (CAD-SKD). Slide Panel B under the center screw and washer of Panel A. Install the brackets per Picture 3C & 3D. Insert one 1/4"-20x1 Serrated Flange and bowl washer thru the skid plate and into both metal brackets. Loosely tighten. See Picture 3.

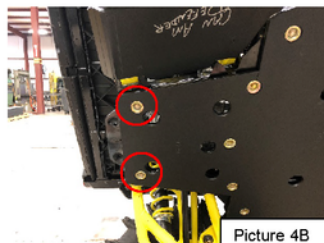
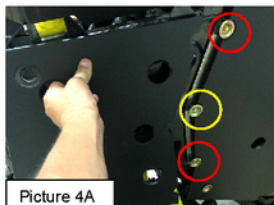




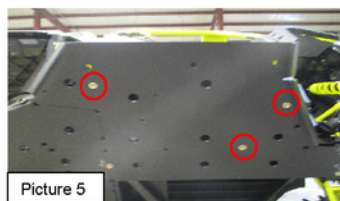
TRAILARMOR.COM
839 HWY 2 CORINTH, MS 38834
(662) 233-5700

Installation Instructions

- E. Locate the 1/4" spacer from the skid set. Peel the paper from the two-sided tape and stick to the frame at the rear of Panel B. See Picture 4A. Locate two supplied #14 x 1-1/4" TEK self-drilling screws and two supplied bowl washers (shown in RED). See also Picture 4A. Insert the screws and washers through the spacer and into the frame rail. Locate one supplied #14 x 1" TEK self-drilling screw and one supplied bowl washer (shown in YELLOW). Insert the screw and washer into the center hole of the spacer. ****NOTE- a 1" screw must be used at the YELLOW LOCATION because of the rear differential!!** Locate Panel C from the skid plate set. Slide Panel C underneath the screws and tighten. See Picture 4A.
- F. Locate two supplied #14 x 1-1/4" TEK self-drilling screws and two supplied bowl washers. Insert these into the remaining holes of Panel C. See Picture 4B.



- G. Locate Panel D of the skid plates. Also, locate three supplied #14 x 1-1/4" TEK self-drilling screws and three supplied bowl washers. While holding Panel D into position, insert the three screws and washers as shown in Picture 5. Repeat for Panel E on the opposite side.

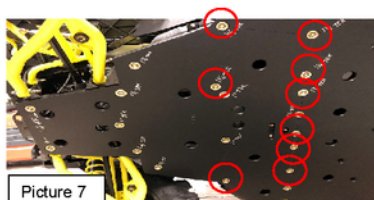
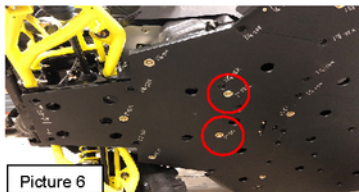


- H. Align all panels and tighten all fasteners installed up to this point. **DO NOT OVERTIGHTEN!**
- I. Locate two supplied #14 x 1" TEK self-drilling screws and two supplied bowl washers. Insert these into the center holes of Panel B. **** NOTE- A 1" screw must be used at these locations also!!** See Picture 6.

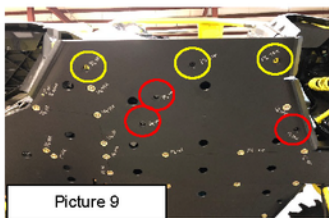
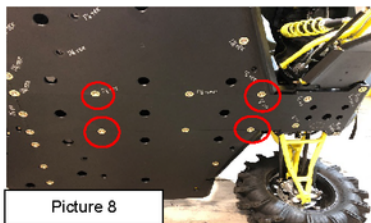


TRAILARMOR.COM
839 HWY 2 CORINTH, MS 38834
(662) 233-5700

Installation Instructions



- J. Locate nine supplied #14 x 1-1/4" TEK self-drilling screws and nine supplied bowl washers. Insert these into the remaining holes of Panel B. See Picture 7.
- K. Locate four supplied #14 x 1-1/4" TEK self-drilling screws and four supplied bowl washers. Insert these into the remaining holes at both sides of Panel A. See Picture 8.



- L. Locate three supplied #14 x 1-1/4" TEK self-drilling screws and three supplied bowl washers. Insert these into the inner holes of Panel D (shown in RED). Locate three supplied #14 x 1-1/2" TEK self-drilling screws and three supplied bowl washers. Insert these into the three remaining holes of Panel D (shown in YELLOW). See Picture 9.
- M. Locate one 1/4-20 x 1" flat head socket cap screw and one 1/4-20 nylock nut. Insert the cap screw into the small hole at the rear of the slider, through the hole in the inner mud flap, and secure with the nylock nut. See Picture 10. Repeat steps L and M for the opposite side. See Picture 10 for final install.