



TRAILARMOR.COM
839 HWY 2 CORINTH, MS 38834
(662) 233-5700

Installation Instructions

Trail Armor Can Am Commander Mud Flap Fender Extensions TAMFFE-CAC

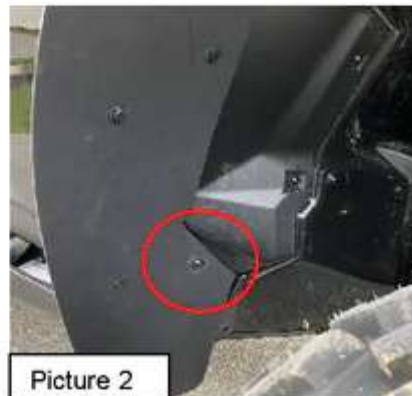
Warnings and Product Liability Disclaimer

This product is intended to be used as a cosmetic accessory under normal equipment operation and should not be depended upon or used as a safety device. Manufacturer assumes no liability for personal injury or equipment damage as the result of use or installation of this accessory. User assumes all risk. User should carefully read all instructions prior to installation. All Trail Armor products are designed, engineered, and fit to new vehicles and their specifications. Damage, modifications, and extreme wear may cause and require modifications to the product and/or your vehicle to insure proper fitment.



Instructions

FRONTS



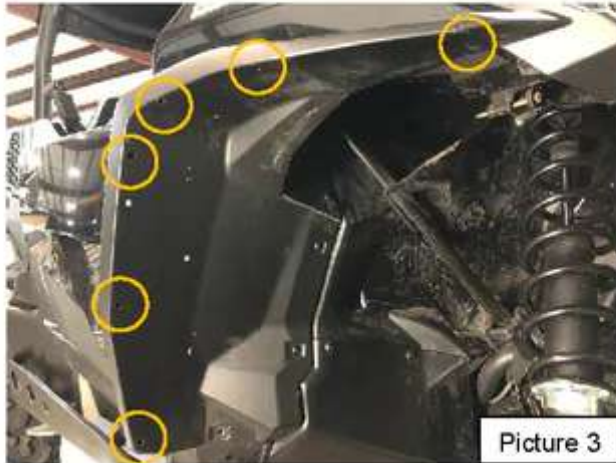
- A. Before starting installation of the front extensions, remove one OEM screw from the passenger side fender well temporarily. See Picture 1. Retain as it will be reused. Locate the driver side front flare of the Trail Armor extensions. Holding the extension at the front of the vehicle, align the mounting hole of the extension with the hole where the OEM screw was removed. Insert the OEM screw back into place. Loosely tighten.



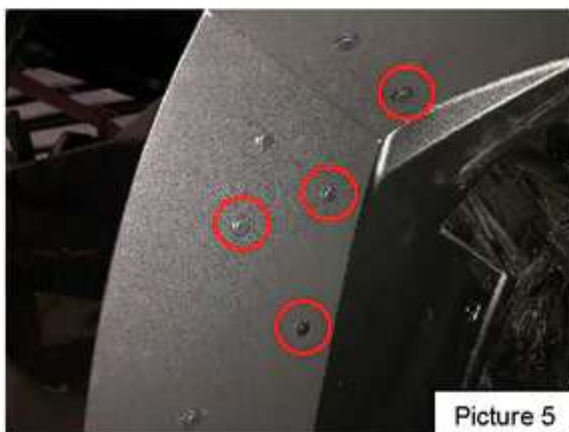
TRAILARMOR.COM
839 HWY 2 CORINTH, MS 38834
(662) 233-5700

Installation Instructions

- B. Locate six supplied push pins. Starting at the bottom rear of the extension, insert the six push pins into the existing OEM holes of the extension. See Picture 3.



- C. Locate one supplied #10 x 3/4" phillips head flat top screw and one supplied 8-32 speed nut. Align the front edge of the extension with the OEM fender flare. Insert the phillips head screw through the tab into the OEM flare. Remove the screw enough to insert the speed nut onto the screw and retighten. See Picture 4.
- D. Locate five supplied push pins. Using a 5-16" drill bit, drill through the remaining five holes of the extension. Insert one push pin into each of the remaining holes. See Picture 5 and 6. Tighten the OEM screw installed in Step A.



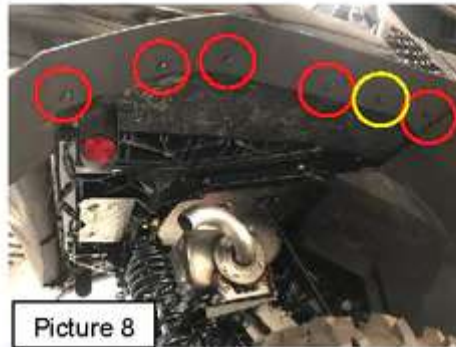


TRAILARMOR.COM
839 HWY 2 CORINTH, MS 38834
(662) 233-5700

Installation Instructions

REARS

- E. Locate the five OEM screws in the bottom of the bed. Remove and retain as they will be reused. See Picture 7. Holding the rear extension into position, reinstall the five OEM screws through the extension into the holes where previously removed (shown in RED). See Picture 8.



- F. Locate one supplied push pin. Using the 5/16" drill bit, drill the remaining hole in the extension. Insert the push pin (shown in YELLOW). See also Picture 8.

CAB

- G. Locate six supplied push-pins. Holding the cab extension into position, insert one push pin into each of the pre-drilled holes of the extension. See Picture 9. Repeat all procedures for the driver side.

