

COMPETITION MOTORSPORT ROLL BAR INSTALLATION

GEN 6 CHEVY CAMARO

- With the front seats centered over their tracks, disconnect the positive terminal of your car's battery. Do this before removing the seats.
- **REMOVE FRONT SEATS:**
 - Remove the two T50 bolts securing the rear of each seat track to the floor. (Photo A)
 - Reaching under the seat from the back, disconnect the seat power connector by releasing the red safety and rotating the lock handle of the connector. (Photo B)
 - Remove the seat belt & seat airbag actuator by removing the T50 bolt on the outboard side of each seat. (Photo C)
 - Disconnect the airbag wire connector by pulling both orange tabs up, then and pulling up on the connector. (Photo D)
 - Remove each seat belt/airbag through the slot in the side of the seat. (Photo E)
 - Tip each seat forward, then push it toward the front of the car to free the front of the seat from the floor pan. (There are many YouTube videos describing Gen 6 seat removal; you may find them helpful.)
 - Remove the front seats from your Camaro and set them aside.
- **REMOVE REAR SEATS:**
 - Starting with the seat back, pull up on the seat release strap in the middle of the top edge.
 - Lift the seat back while titling it forward 45° to release the lower pivot bolts. Remove the seat back from the car.
 - Rear seat bottoms are removed by releasing the retaining clip in the middle of each side of the rear seat bottoms.
 - Remove the seat bottom, sliding the seat belts through their mounting location.
- Pull back carpet below the rear seat bottom by slightly releasing the side trim. This exposes the bulkhead on which the seat cushion sat. This will give you room to drill holes for the front roll bar mounts. (Photo F)
- Install the seat-back portion of the rear seat delete by first removing the plastic trim fasteners. (Photo G) Then install the seat-back portion of the RSD, using the longer plastic trim fasteners included with your RSD kit. Center the RSD on the center-mounted rear seat latch, then press in the four plastic fasteners. (Photo H)

6. INSTALL THE ROLL BAR:

- Remove the T50 rear seat belt lower anchor bolts.
- Put the rear kicker mounting plates with the larger hole lined up with the lower seat belt anchor threaded hole. Don't bolt it in yet. (Photo J)
- Install the roll bar centered on the rear seat bulkhead, and loosely connect the kickers to the kicker mounting plates. (Photo K)
- Use the included 13/32" drill bit to drill the four holes needed to bolt in the main hoop. (Photo L)
- Use the four included Allen bolts and Nylock nuts to connect the rear kickers to the mounting plates. Nuts should be on the outboard side of the joint. Tighten to 40 lb-ft.
- Use a T50 to re-install the lower seat belt anchor through the kicker mounting plates. Tighten to 50 lb-ft. (Photo M)
- Put a lock washer on each of the included 1" bolts. Reaching under the front lip of the rear seat bulkhead, push each bolt through one of the holes drilled in the step above. (Photo N)
- Install four washers and Nylock nuts onto these bolts. Holding the bolt-head with a wrench, tighten the nuts to 50 lb-ft. (Photo O)
- Put the carpet and side trim back in place.

7. INSTALL BOTTOM OF REAR SEAT DELETE:

- Install the lower rear seat delete support by sliding it over the guide studs near the back of the rear seat well. Use the included 10mm nuts to tighten the trim in place. (Photo P)
- Install each half of the lower rear seat delete trim using the push-pin trim fasteners included in the kit.
- Install the included trim fabric over the rear seat hinge and battery cable to finish off the installation. (Photo Q)

Installation of your front seats is the reverse of removal. Don't forget to reconnect the airbag wiring and under-seat power connector before reconnecting your battery!

Enjoy Your New CMS Rollbar!

If you have questions during the installation, please call us at
(844) 438-7244 and we'll be happy to help.

INSTALLATION PHOTOS

Photo A (T50 bolt attaching rear of seat track to floor)

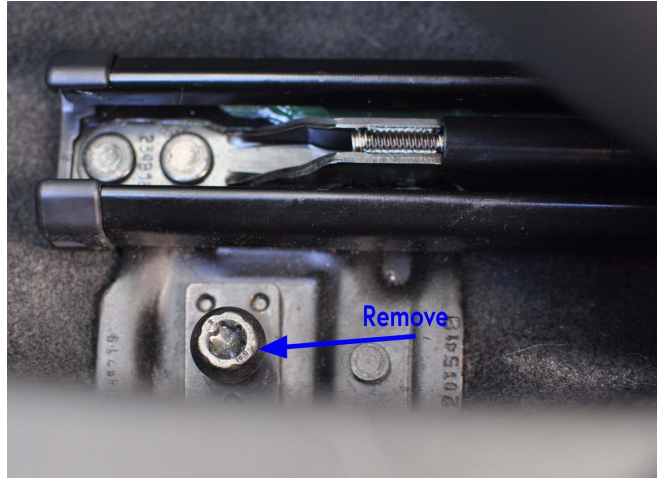


Photo B (under-seat electrical connector)



Photo C (seat airbag attachment bolt)

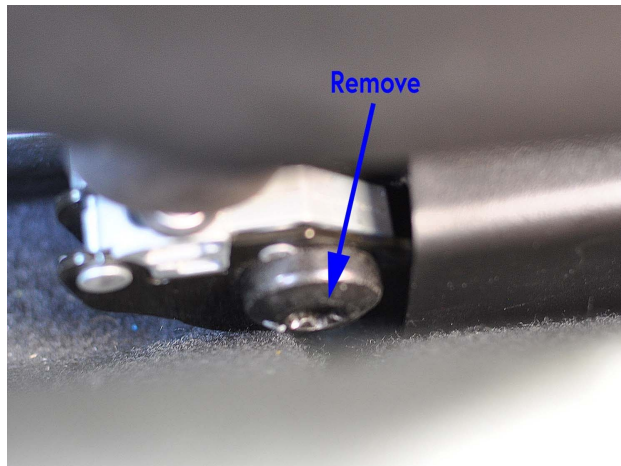


Photo D (airbag electrical connector)



Photo E (slide airbag module up through seat, 3 pics)

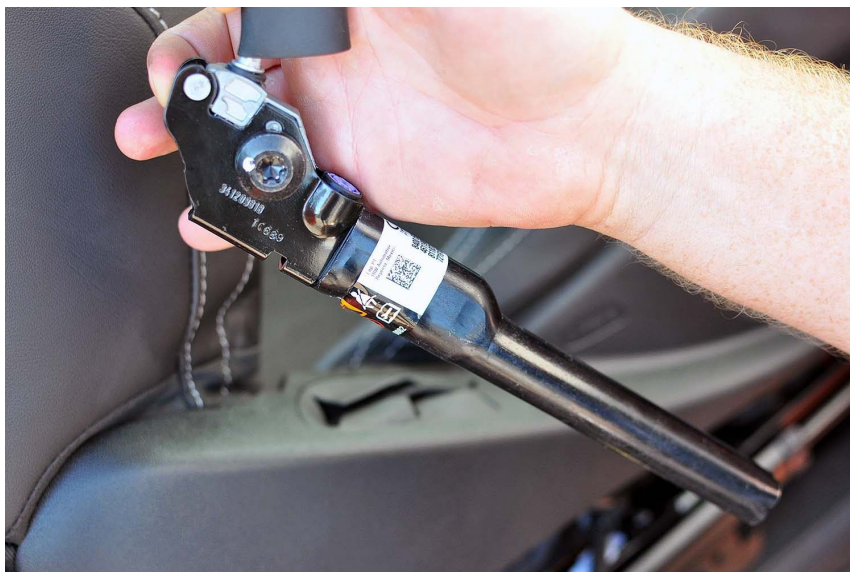


Photo F (pull back carpet in rear seat footwell)



Photo G (remove rear trim fasteners)



Photo H (install rear seat delete back)

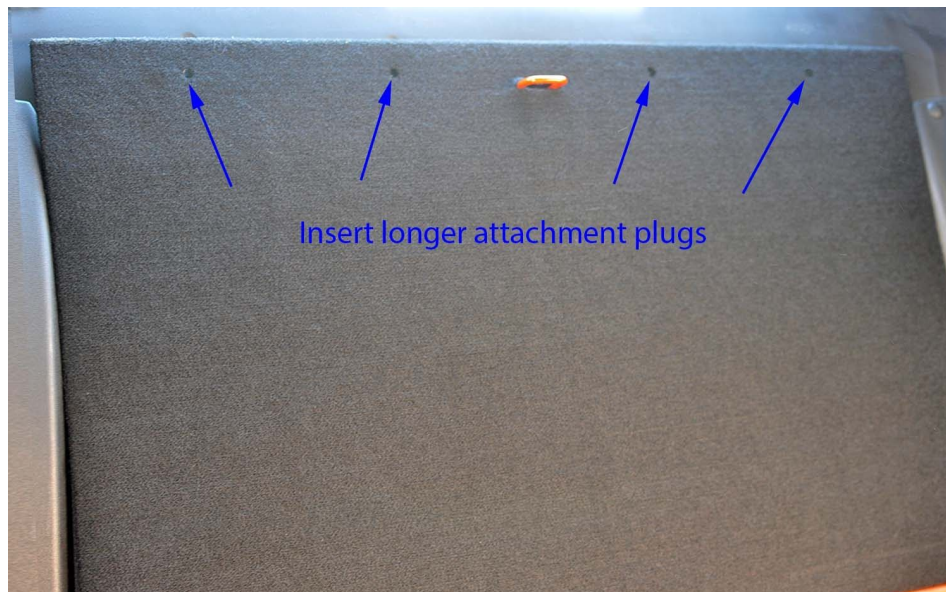


Photo J (locate rear kicker mounting plates, 2 pics)



Photo K (Place roll bar with kicker lined up to feet)



Photo L (drill holes for main hoop mount)

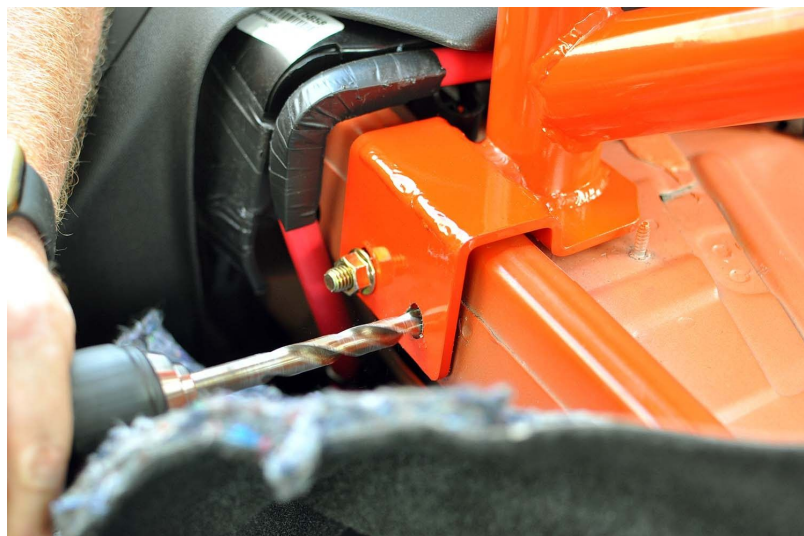


Photo M (seat belt anchor bolt thru kicker foot)



Photo N (main hoop mounting bolts)

note: main hoop is not pictured, but should be in place when pushing these bolts through...



Photo O (main hoop bolted in)



Photo P (rear seat delete lower support)



Photo Q (rear seat delete bottoms installed)

