



REAR BUMPER INSTALLATION INSTRUCTIONS **2007-2018 Mercedes Sprinter PN:210288.4**



Please read before beginning

- *Stainless steel hardware may bind together when tightening—It is recommended that you apply an anti-seize assembly lubricant to the threads of each bolt before assembly*
- *This installation requires two people*
- *Unless otherwise specified, refer to the general torque value at the end of the instructions for specified torque values*

Required tools

- *Standard and metric wrench set*
- *Allen wrench set*
- *Torx-head (6-point star) wrench set*
- *Flat-head screwdriver (used to remove stock plastic fasteners)*
- *Phillips-head Screwdriver*

PRE-KIT 350461

Included Hardware

Quantity

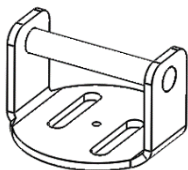
- | | |
|---------------------------------------------------------------------|----|
| • 70185—7/16-14 x 4 ½" Hex Head Bolt, Grade 8 | 8 |
| • 70056---7/16-14 Nylock Nuts, Grade 8 | 8 |
| • 70057---7/16" Flat Washers, Zinc Plated | 16 |
| • Upper Door Latch Assembly (pre-assembled with the below hardware) | |
| ○ 70030—3/8-16 x 1.5" Countersunk Head Bolt | 2 |
| ○ 70024---3/8-16 Nylock Nuts | 2 |
| ○ 70028---3/8" Flat Washers | 2 |
| ○ 70009---1/4" Washer | 4 |
| ○ 70223—1/4-20 x .5" Button Head | 4 |
| ○ 70010 – Star Locking Washer | 4 |
| • Universal Tire Mount Hardware | |
| ○ 70479 – 5/32" Hex, Tamper Resistant, Bit | 1 |



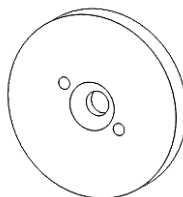
- 401132 – 1/4" Hex Bit Holder, Key Chain
- Antiseize Packet, 2g
- 70008---1/4"-20 Nylock Nut
- 70009---1/4" Flat Washer
- 70060---1/4"-20 x 1" Button Head Screw

1
1
1
2
1

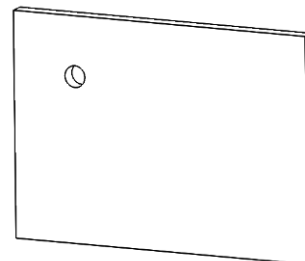
Included Parts/Subassemblies



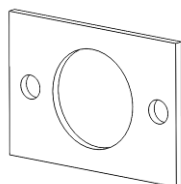
x2
Door Latch Pin



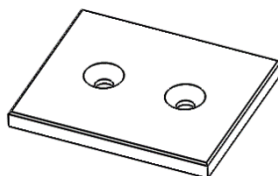
x2
Door Latch Pin Mounting Plate



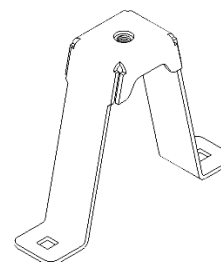
x2
Inner Door Mounting Plate



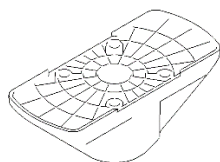
x4
Parking Sensor Brackets (if applicable)



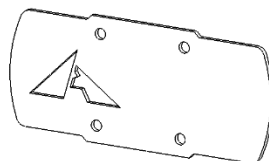
x2
Black Plastic Support Block (pre-installed)



x1
**Universal Tire Mount, Bracket
PN: 351133**



x1
**Universal Tire Mount, Wheel Wedge
PN:301629**



x1
**Universal Tire Mount, Wheel Wedge Cover
PN:351648**



Installation Instructions

1. Your new Aluminess Rear Bumper will work with the factory plastic bumper. This is to ensure proper function of lane change sensors if your vehicle is equipped with them.
2. If you have a cargo step bumper or a receiver, you will need to remove them for this installation.
 - a. The plastic step on step bumpers will need to be trimmed off to fit your Aluminess Bumper.
3. Remove the factory hardware from your rear receiver hitch (if your van is equipped with one), and discard. **You will not reuse the factory hardware** to install your Aluminess bumper.
4. With someone assisting you by holding up the trailer hitch and bumper assembly, mount the hitch to the frame using the 7/16" Bolts. If your Sprinter has the factory backing plate you can retain it and use it to shim the spacing of the bumper blades to fit snug between the vehicle's frame and the Aluminess bumper.
 - a. If the bumper fits snug on the vehicle without the backing plates used as shims, the backing plate can then be used with the washers on the inside of the frame.
 - b. Leave all bolts loose for adjustment for the remainder of the install.
5. You may have to push the exhaust out of the way in order to slide the passenger side bracket assembly, so **make sure that the vehicle is off, and wait an ample time after running the engine to ensure that the exhaust pipe is cold— otherwise you risk burning yourself!**



Figure 1: Aluminess Hitch with Factory Backing Plate on Inside of Frame

6. Remove the interior door panel on the back door to gain access to the magnet mounting bolt. To do this, gently pry around the corners of the plastic to pop it off the fasteners.
7. With the door panels removed, you will have access to the door magnet bolt on the Driver Side. Remove the door magnet.



Figure 2. Door magnet bolt underneath door panels.

8. Replace the magnet with the supplied Door Latch Pin Mounting Plate. It helps to have the door latch pin attached to the mounting plate so you can align the pin horizontally when installing it on the door. This mounting plate will bolt through the door and the supplied Inner Door Mounting Plate.



Figure 3. Latch pin assembly mounted on rear door.

9. On the passenger side, remove the torx bolts that hold on the door handle before you can access the door magnet bolt.



Figure 4. Torx bolts holding door handle on passenger side door.

10. Once the latch pin is sitting horizontal you can tighten the 3/8" bolt on the inside of the door.
11. Reinstall the door panels on the van door. If any of the fasteners were left in the door you will need to remove them and slide them into the door panel slots before you can snap the door panel back on.
12. With the Latch Pin in place, you can close the van doors and close the swing arms on the bumper.
13. Make sure the latch pin is loose on the mounting plate so that it can slide up and down.
14. Pivot the bumper towards the van until the latch on the swing arm engages with the latch pin on the door. Once the latch is engaged with the latch pin, the bumper is aligned correctly.
15. Tighten all of the 7/16" bolts that hold the hitch to the frame to 63 ft-lbs.
16. With 7/16" bolts tight, the bumper is now locked in place. You can open the swing arms and tighten the latch pin that is mounted to the door.



Figure 5. Tow Plug with 1/4" button head screw.

17. If you have a hitch wiring electrical box on your vehicle, you can bolt it on either side of the Aluminess receiver hitch. Use the provided 1/4" hardware (See Figure 5) to fasten down.

18. It is important to keep the latch holding the swing arm to the door when the vehicle is in motion. This upper support helps keep everything stable and solid.

Tire Rack Installation:

1. Loosely fasten the Tire Mount Bracket to the slotted channel, going through the bracket first, using the 3/8" carriage head bolts, washer, and nuts to mount. Reference Figure 6.

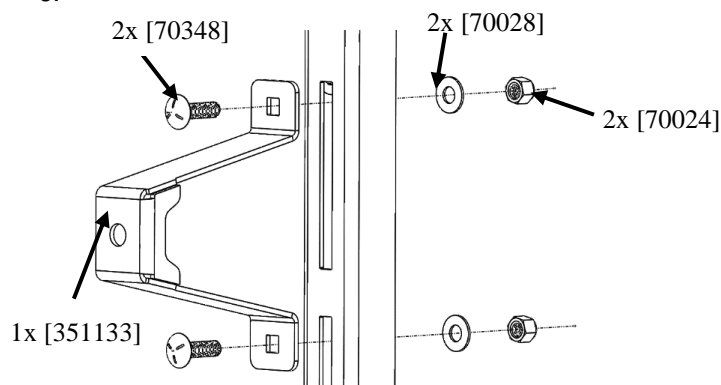


Figure 1: Mounting Tire Bracket

2. Place the mounting bracket in the correct location by placing your tire on the tire supports and then adjusting the bracket vertically until the center hub aligns with the center of the bracket.
3. Once the bracket is in place remove the tire and tighten the hardware holding the bracket in place.
4. Place the tire on the support stands and mount the wheel wedge, using the 5" hex head bolt, washer and star washer. Reference Figure 4 and 5.

NOTE: Tighten down bolt until snug with wedge (it should be very hard/near impossible to rotate the wedge by hand. Once at this point tighten 2 more full rotations.

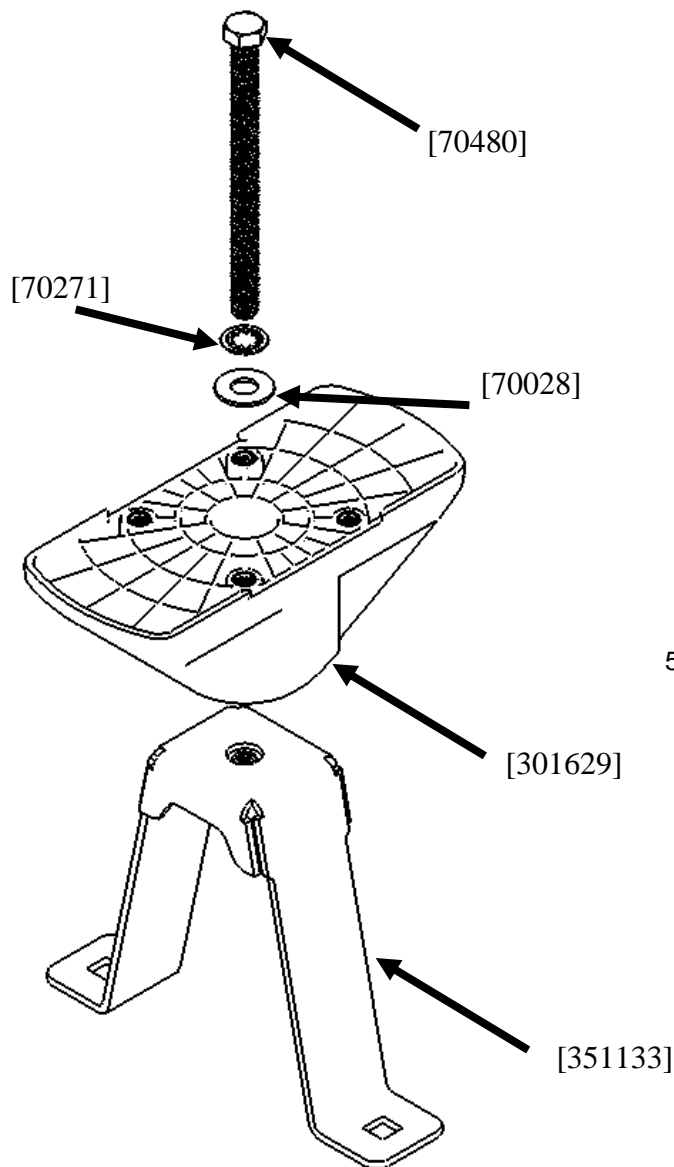


Figure 4: Wheel Wedge Assembly



Figure 5: Tire Mount Assembled

5. [Optional] If desired, you can mount a Rotopax to the wheel wedge. Before installing the cover [Step 10] first, bolt the rotopax mount to the wheel wedge using the security bolts [70478], as shown below in figure 6. Then simply install the rotopax onto the mount. The cover will not be used if using the rotopax mount.



Figure 6: Rotopax Mount

6. Once everything is securely fastened, bolt the cover to the wheel wedge using the included special bit [70479], and bolts [70478]. Reference Figure 6.

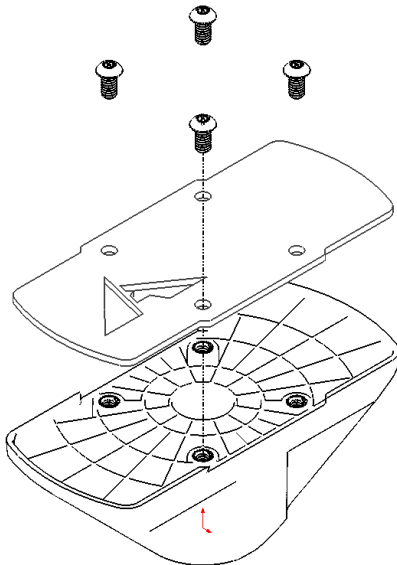


Figure 6: Wheel Wedge, Cover Mounting

7. Check mounting hardware after first 100 miles of driving and periodically after to verify hardware has not become loose from vibration.
8. Your new Aluminess bumper is now installed, enjoy!

| General Torque Values | | | |
|------------------------------|------------------------|-------------|----------------|
| Size | Stainless Steel | Zinc | Grade 8 |
| #6-32 | 10 lb-ft | -- | -- |
| #8-32 | 18.4 lb-ft | -- | -- |
| #10-32 | 26.6 lb-ft | -- | -- |
| 1/4"-20 | 5.3 lb-ft | 7.8 lb-ft | 9 lb-ft |
| 5/16"-18 | 10.9 lb-ft | 16 lb-ft | 18 lb-ft |
| 3/8"-16 | 19.4 lb-ft | 28.3 lb-ft | 33 lb-ft |
| 7/16"-14 | 31 lb-ft | 45 lb-ft | 52 lb-ft |
| 1/2"-13 | 47 lb-ft | 69 lb-ft | 80 lb-ft |
| M6 | 4.7 lb-ft | 5.8 lb-ft | -- |
| M8 | 11.3 lb-ft | 14.1 lb-ft | -- |
| M10 | 22.3 lb-ft | 27.9 lb-ft | -- |
| M12 | 38.9 lb-ft | 48.7 lb-ft | -- |



Aluminess Products, Inc. (Aluminess) Warranty

1. **Lifetime Warranty.** Aluminess provides a lifetime warranty of its products to the original retail purchaser provided such products are installed correctly according to the official Aluminess installation instructions. Any modification to the original product design, function or use of any Aluminess products will void the Aluminess warranty. Aluminess will have sole discretion to determine warranty eligibility for any and all Aluminess products sold to any purchaser.
2. **Limited Remedies.** Subject to any limitations and exclusions described herein, and subject to Aluminess' determination of warranty eligibility, Aluminess will remedy defects in product materials and/or workmanship of any product by repairing or replacing such defective product, which shall be within Aluminess' sole discretion, without charge for parts or labor. Aluminess may elect in its sole discretion not to replace a defective product and issue the purchaser a refund equal to the purchase price of any defective product or purchaser may elect to receive a credit (equal to such refund) toward the purchase of new Aluminess products. Repair or replacement of a defective product or providing a refund or credit to purchaser will be purchaser's exclusive remedy under this warranty. Damage to a purchaser's vehicle, cargo and/or any other person or property is expressly excluded from the Aluminess warranty.
3. **Modification.** Aluminess products are designed to be mounted to factory equipped vehicles. Aftermarket additions to such vehicle may or may not require modification of an Aluminess product. The Aluminess warranty does not extend to any Aluminess products that are modified to fit around other otherwise accommodate or be compatible with any aftermarket vehicle accessories or alterations. Aluminess does not guarantee fitment with any other aftermarket accessories or modified vehicle, and it is up to purchaser to determine fitment prior to purchasing any Aluminess product.
4. **Damage.** Damage to Aluminess products due to normal wear and tear, including, but not limited to, cosmetic issues and superficial scratches, or structural damage to an Aluminess product in connection with any vehicle collisions or other structural degradation in connection with the use of such vehicle (on road or off road) will not be covered by the Aluminess warranty. Additionally, any product user's misuse, neglect, overloading, improper maintenance or improper installation or repair of any Aluminess products are not covered under the Aluminess warranty.
5. **Use of the Products.** Aluminess products are designed for off road vehicle use. Installing Aluminess products on a vehicle may exceed the factory designed capabilities of such vehicle and could potentially lead to vehicle damage. Aluminess will not be responsible for any damage caused to a purchaser or user's vehicle or any vehicle accessories caused by the use of any Aluminess products. It is to the sole responsibility of purchaser to inspect and ensure that the intended vehicle and Aluminess products are suitable and compatible for travel on road and off road. No seller nor any manufacturer of Aluminess products will be liable for any loss, damage or injury directly or indirectly arising from the use of any Aluminess products. Before using any Aluminess products, the purchaser or user will determine the suitability of the product(s) for their intended use(s) and the purchaser or user shall assume all responsibility and risk in connection therewith.
6. **DISCLAIMER.** THE ALUMINESS WARRANTY IS EXPRESSLY MADE IN LIEU OF ANY AND ALL OTHER WARRANTIES, AND EXCEPT FOR THE ALUMINESS WARRANTY SET FORTH HEREIN, ALUMINESS MAKES NO WARRANTY WHATSOEVER WITH RESPECT TO ANY ALUMINESS PRODUCT, INCLUDING ANY WARRANTY OF MERCHANTABILITY AND FITNESS FOR A PARTICULAR PURPOSE, WHETHER EXPRESS OR IMPLIED BY LAW, COURSE OF DEALING, COURSE OF PERFORMANCE, USAGE OF TRADE, OR OTHERWISE.
EXCEPT FOR PURCHASER'S LIMITED REMEDIES SET FORTH HEREIN, IN NO EVENT WILL ALUMINESS BE LIABLE FOR ANY LOST PROFITS, LOST SALES, OR FOR ANY CONSEQUENTIAL, DIRECT, INDIRECT, INCIDENTAL, SPECIAL, EXEMPLARY OR PUNITIVE DAMAGES OR FOR ANY OTHER DAMAGES OF ANY KIND OR NATURE.
7. **Compliance.** Aluminess cannot guarantee that its products comply with all Federal, State, and/or local laws. Purchaser is advised to review local vehicle codes for compatibility prior to purchase to ensure that the installation and use of any Aluminess products does not violate any applicable laws.
8. **Warranty Claim Submission.** Purchaser will responsible for returning any defective product to Aluminess for warranty consideration and purchaser may be responsible for all costs associated with shipping the product to and from Aluminess. Prior to returning any product for warranty, purchaser must contact Aluminess Products Inc. for proper authorization.