

READ ME ! ⚠

Thank you for purchasing a Front Runner Toyota Sequoia Ladder.

Before you start, take a moment to familiarize yourself with the Fitting Instructions and the included components.

Refer to Page 2 for a list of all the components, quantities and tools required.

IMPORTANT WARNING! ⚠

IT IS CRITICAL THAT ALL FRONT RUNNER PRODUCTS BE PROPERLY AND SECURELY ASSEMBLED AND ATTACHED TO YOUR VEHICLE. IMPROPER ATTACHMENT COULD RESULT IN AN AUTOMOBILE ACCIDENT, AND COULD CAUSE SERIOUS BODILY INJURY OR DEATH. YOU ARE RESPONSIBLE FOR ASSEMBLING AND SECURING ALL FRONT RUNNER PRODUCTS TO YOUR VEHICLE, CHECKING THE ATTACHMENTS PRIOR TO USE, AND PERIODICALLY INSPECTING THE PRODUCTS FOR ADJUSTMENT, WEAR AND DAMAGE. THEREFORE, YOU MUST READ AND UNDERSTAND ALL OF THE INSTRUCTIONS AND PRECAUTIONS SUPPLIED WITH YOUR FRONT RUNNER PRODUCT PRIOR TO INSTALLATION OR USE. IF YOU DO NOT UNDERSTAND ALL OF THE INSTRUCTIONS AND CAUTIONS, OR IF YOU HAVE NO MECHANICAL EXPERIENCE AND ARE NOT THOROUGHLY FAMILIAR WITH THE INSTALLATION PROCEDURES, YOU SHOULD HAVE THE PRODUCT INSTALLED BY A PROFESSIONAL INSTALLER OR OTHER QUALIFIED PERSONNEL.

NOTE: Front Runner will not be responsible for any damage caused by the failure to install the product according to these instructions.

Please call us if you have any questions about the installation of this product.



1 GET ORGANIZED

IN THE BOX

1	1 X	Ladder Top Step Bracket
2	2 X	Upper Side Rail
3	2 X	Outer Joiner Plate
4	2 X	Lower Side Rail
5	2 X	Inner Joiner Plate
6	1 X	Bottom Step
7	3 X	Ladder Rung (190mm)
8	2 X	M8 x 35 Button Head Bolt
9	2 X	Aluminium Spacer
10	1 X	Bottom Clamp
11	2 X	M8 x 16 x 1.6 Flat Washer
12	2 X	M8 Nyloc Nut
13	2 X	M8 Nut Cap
14	1 X	M8 x 40 Hex Bolt
15	1 X	M8 Hex Nut
16	1 X	Lower Mount Plate
17	3 X	M6 x 20 Button Head Bolt
18	19 X	M6 Nyloc Nut

IN THE BOX

19	1 X	U-Channel Rubber (170mm Long)
20	14 X	M6 x 16 Button Head Flange Bolt
21	6 X	M6 x 25 Thread Forming Screw
22	14 X	M6 Nut Cap
23	2 X	Top Mounting Bracket; 1 RH & 1 LH
24	2 X	M6 x 12 Button Head Bolt

TOOLS NEEDED

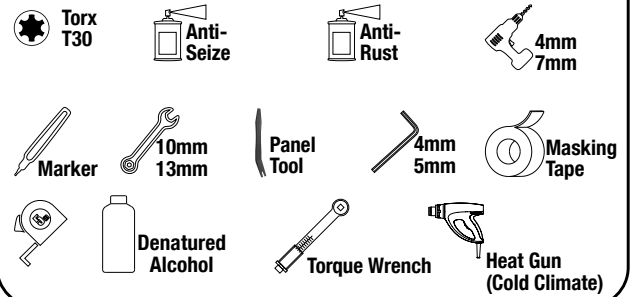
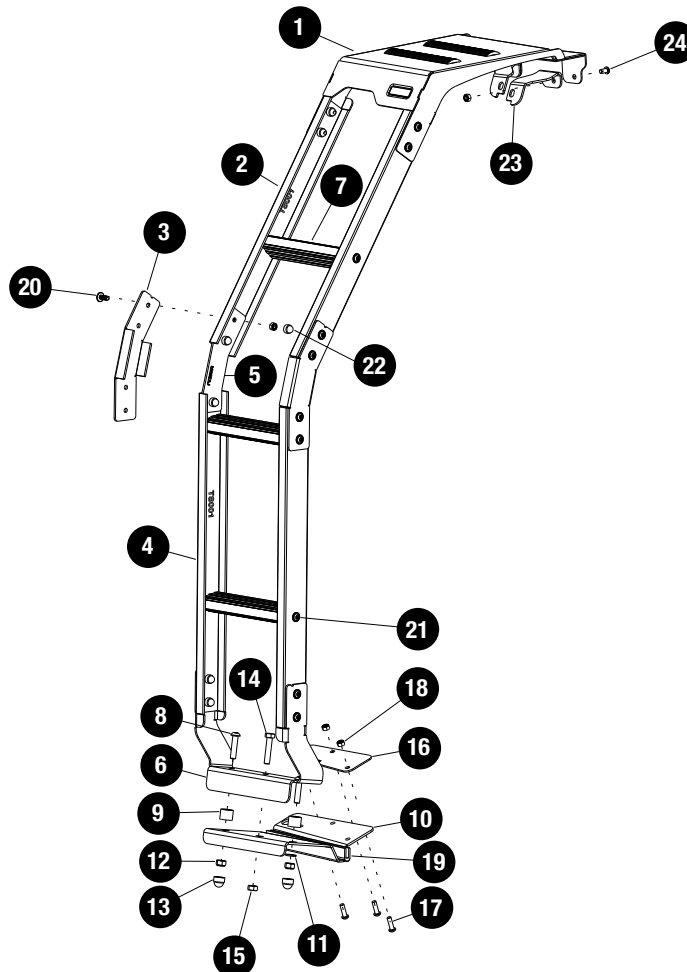


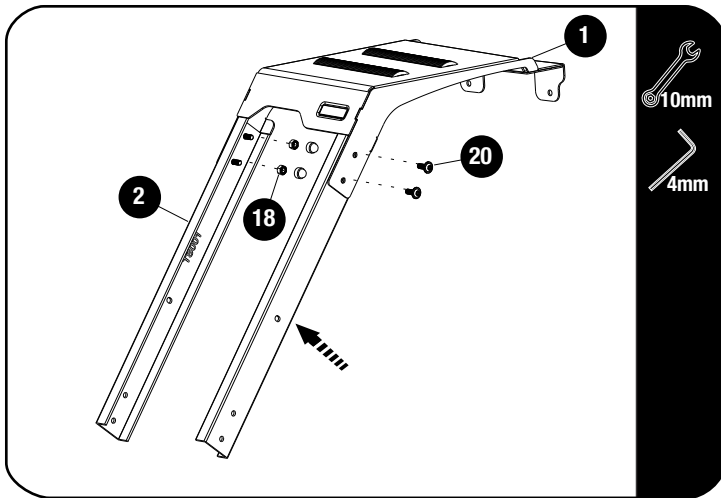
FIGURE 1.1



2

FIT AND SECURE

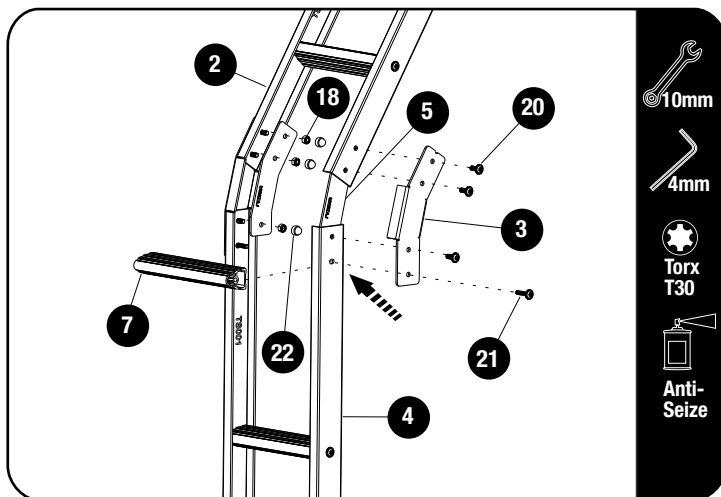
2.1



Loosely assemble two Upper Side Rails (Item 2) to the Ladder Top Step Bracket (Item 1) using the M6 x 16 Flange Button Head Bolts and M6 Nyloc Nuts (Items 20 & 18).

Take Note of the Slot position of the side rails . The rung will be installed in the lower position, as shown in fig 2.1.

2.2



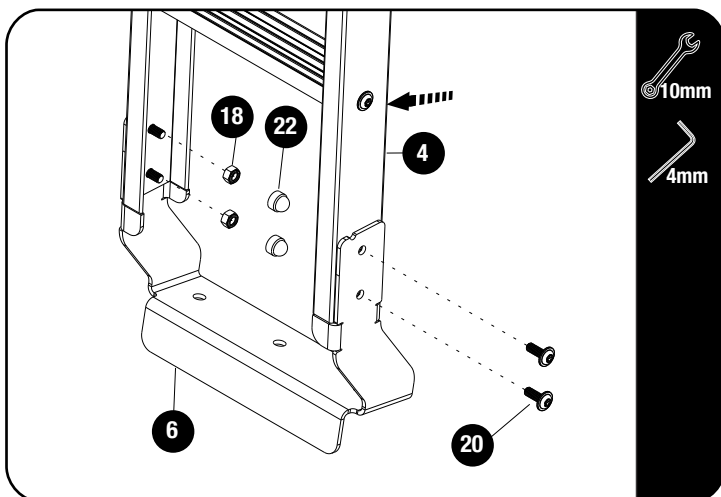
Apply a little Anti Seize / oil on Thread Forming Screws before inserting. Note these are thread forming screws.

Secure the Ladder Rungs (Item 7) to the Upper - and Lower Side Rails (Items 2 & 4) using M6 x 25 Thread Forming Screws (Item 21). Join Side Profiles with Outer Joiner Plates and Inner Joiner Plates (Items 3 & 5) using M6 x 16 Flange Button Head Bolts and M6 Nyloc Nuts (Items 20 & 18). Fully Tighten all Fasteners.

Take Note of the Slot position of the side rails . The rung will be installed in the upper position for the middle rung and the lower position for the last rung, as shown in fig 2.2 and 2.3.

Tightening Torque:
M6 : 8-10Nm / 5.9 ft lb - 7.38 ft lb

2.3



Secure the Bottom Step to the Lower Side Rails (Items 6 & 4) using M6 x 16 Flange Button Head Bolts and M6 Nyloc Nuts (Items 20 & 18). Fully Tighten all Fasteners.

Place M6 Nut Caps (Item 22) over all Nyloc Nuts.

Tightening Torque:
M6 : 8-10Nm / 5.9 ft lb - 7.38 ft lb

2.4

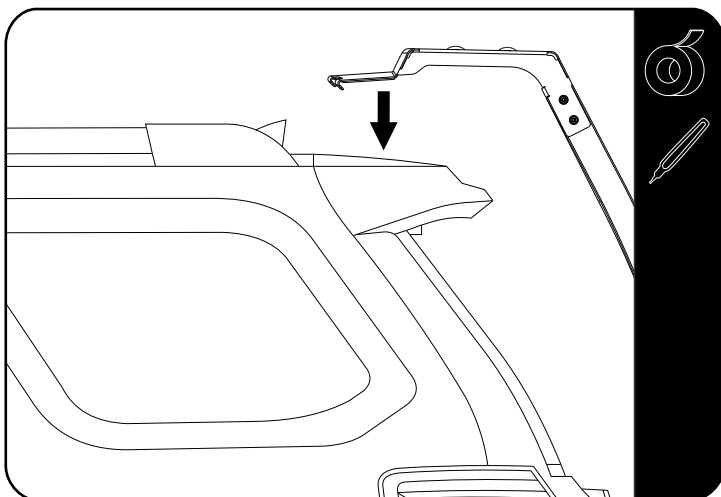


Loosen and remove the Left Hand OEM Hinge Bolts to fit the Top Mounting Bracket (Item 23) to act as a guide for the placement of the ladder.

Loosen one side at a time and ensure it is fully tightened before moving on to the second bracket.

Follow the same procedure for the Right Hand Side.

2.5



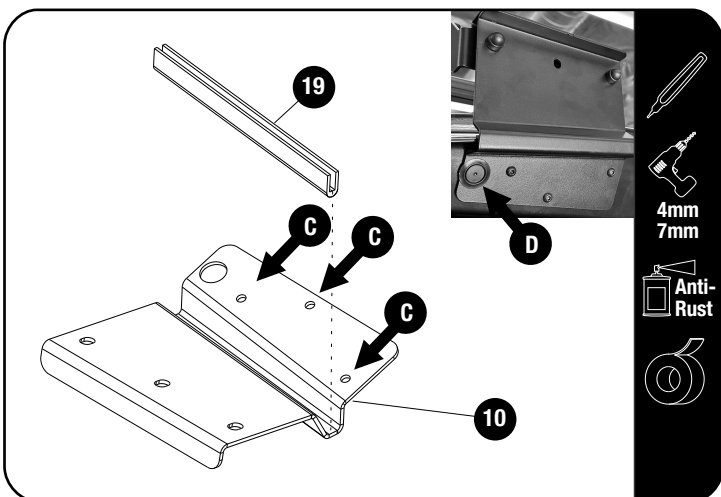
With the hatch closed place the ladder onto the top of the hatch. Hold firmly in place to prevent it moving and open the hatch to shift and align with holes in top mount brackets.

Temporary secure in place with one M6x12 Button Head Bolt (Item 24) and M6 Nyloc Nut (Item 18).

Take note of bolt orientation as shown in fig 2.4.

Close the hatch and mark the top step position on the top of the hatch by placing a strip of masking tape on the hatch along the top step side edge before removing it.

2.6



Open the hatch and remove the inside plastic trim to reveal opening in metal work.

Remove the grommet (D) on the underside and align the hole in the Bottom Clamp Bracket with the grommet hole.

Align bracket with the door and mark the three mounting hole positions (C).

Drill a 4mm pilot hole on the three markings and open to 6.5mm.

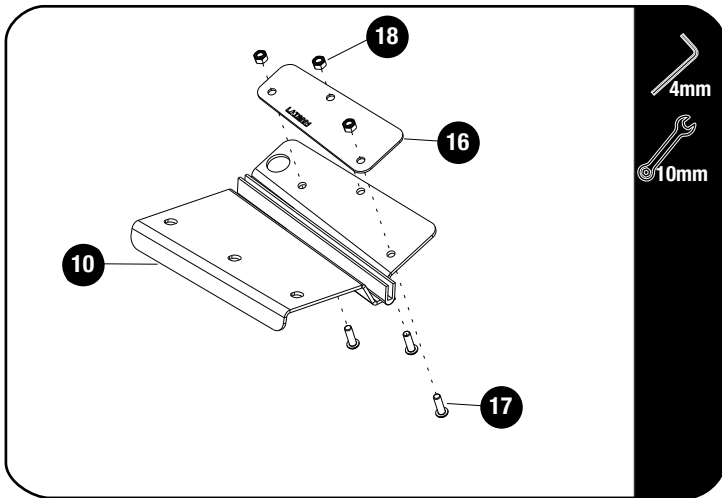
Apply anti rust to all the new holes.

Fit the rubber U trim to the bottom edge of the hatch.

2

FIT AND SECURE

2.7



Secure the Bottom Clamp (Item 10) to the bottom of the hatch by placing the Lower Mounting Plate (Item 16) inside the cavity and lining both up with the holes drilled in step 2.6.

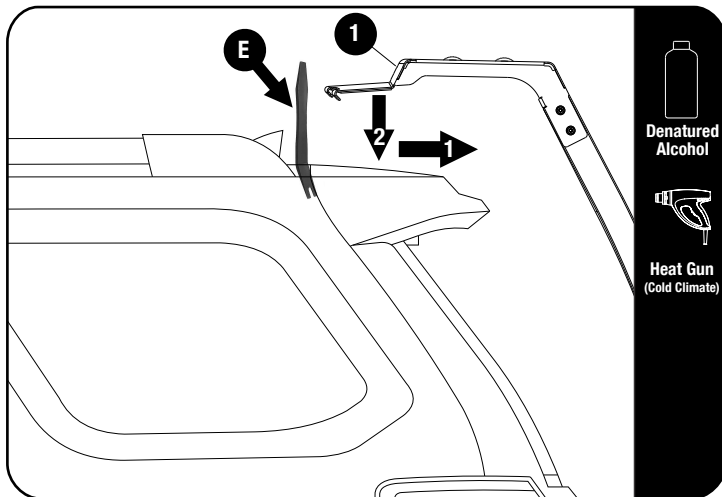
Secure using M6 x 20 Button Head Bolts and M6 Nyloc Nuts (Items 17 & 18) and fully tighten all fasteners.



Tightening Torque:

M6 : 8-10Nm / 5.9 ft lb - 7.38 ft lb

2.8



Clean the top area of the hatch with Denatured Alcohol.

Remove the backing of the VHB tape on the underside of the top step and position the ladder with tape edge.



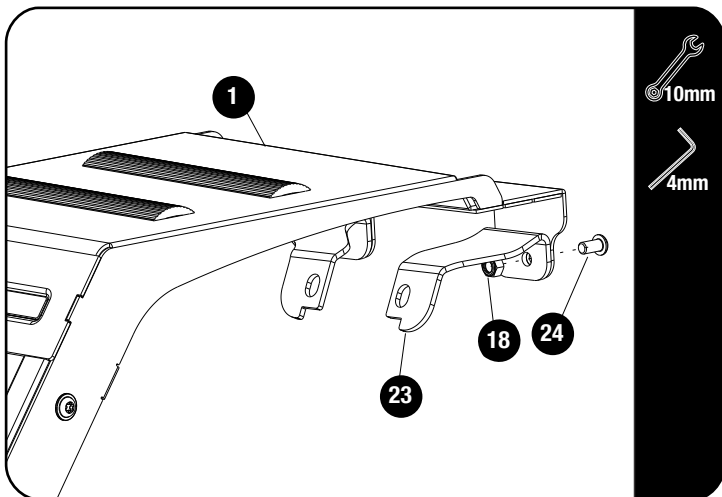
TIP: Use a suitable panel tool (E) and wedge it between the ladder top and hatch shut line to insure the ladder is up against hatch edge.

Slowly lower the ladder top step onto the top of the hatch. Press firmly down when in place.



Note: With the backing removed, heat up the self-adhesive tape with a heat gun before fixing it in place. This is especially important in colder climates.

2.9



Secure the Top Step Bracket (Item 1) to the two Top Mounting Brackets (Item 23) using M6 x 12 Button Head Bolts and M6 Nyloc Nuts (Items 24 & 18)

Tighten all Fasteners.



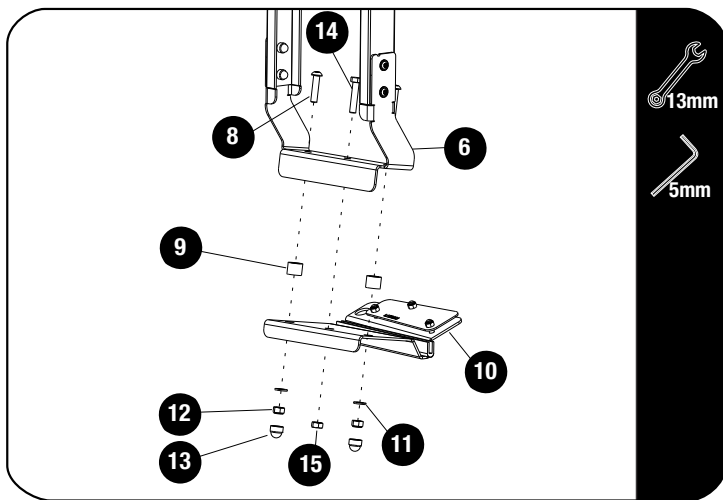
Tightening Torque:

M6 : 8-10Nm / 5.9 ft lb - 7.38 ft lb

2

FIT AND SECURE

2.10



Secure the Ladder assembly to the Bottom Clamp (Item 10) as shown.

Use the M8 x 40 Hex Bolt and Standard Nut (Items 14 & 15) in the middle hole and start the clamping process, then use the M8 x 35 Button Head Bolts, M8 x 19 x 1.6 Flat Washers, M8 Nyloc Nuts and Aluminium Spacers (Items 8, 11, 12 & 9) in the other two holes. Remove the M8 x 40 Hex Bolt and Standard Nut.

Note: Spacers (Item 9) installed between Bottom Step (Item 6) and Bottom Clamp (Item 10)

Place M8 Nut Caps (Item 13) over M6 Nyloc Nuts.



Tightening Torque:

M8 : 15-20Nm / 11.06 ft lb - 14.75 ft lb

3

FINISH

Congratulations! You did it. Take a step back and admire your work!

4

INSTALL OTHER VEHICLE AND RACK ACCESSORIES

Now's the time to visit your favorite Front Runner Dealer in person or online.

Be sure to tag us. We love to see our gear in action! #FrontRunnerOutfitters #BornToRoam

Share your adventures on: