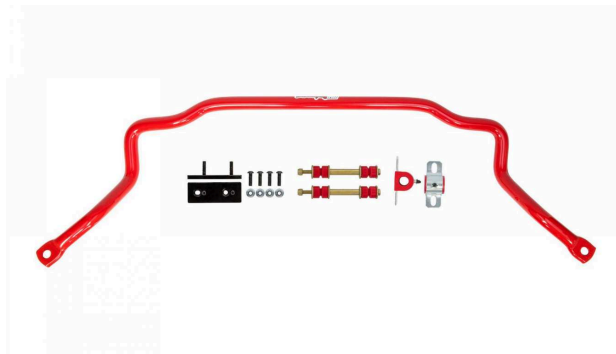


# INSTALLATION INSTRUCTIONS



78-87 G-Body

## 1 5/16 Front Sway Bar

PART NUMBER 3067

### Technical Support

We strive to provide the utmost pre- and post-sales support for our products. Whether you just need upgrade advice, or assistance in adjusting or installing a product, our experienced support staff is always ready to help optimize your UMI product.

### CHAT WITH A UMI PROFESSIONAL TODAY

Need installation advice or clarification on the instructions? Scan the QR code (right) to chat directly with a UMI Professional or use the contact information provided to talk to customer service.

*Note: UMI social media accounts do not respond to customer service questions.*



### CONTACT CUSTOMER SERVICE

**Hours:** M-F 8:00-4:30 (EST)

**Email:** [support@umiperformance.com](mailto:support@umiperformance.com)

**Call:** +1 (814) 343-6315

**Address:** 509 Hemlock Street  
Philipsburg, PA 16866

### SOCIAL MEDIA

#umiequipped #umiperformance

@umiperformanceinc

### Included Parts

Part Description	Quantity	PN
1 5/16 Sway Bar	1 Piece	3067
End link kit	1 Kit	90042
Sway Bar Bushing	1 Kit	88-1180
Offset Sway Bar Spacer	1 Kit	3068MA

### Tools Needed

Properly rated Jack and Stands  
SAE Hand tools, sockets, wrenches  
Allen Wrench set  
Grease Gun

## INSTALLATION INSTRUCTION

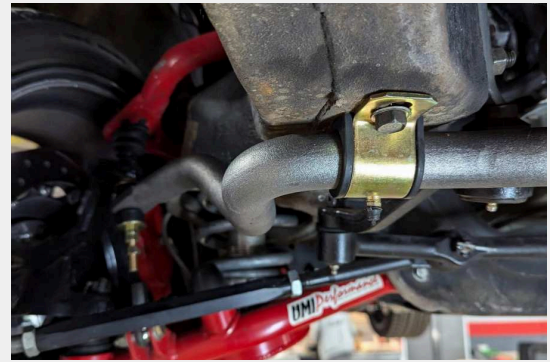
### DISCLAIMER

UMI Performance shall not be held liable for any injuries or damages resulting from the improper installation of this product. It is the sole responsibility of the user to ensure that the product is installed correctly and in accordance with all applicable laws, codes, and regulations. The user assumes all risk and liability for any injuries or damages that may arise from the improper installation of this product. It is important to follow these steps carefully and use the proper tools to avoid damaging the vehicle or causing injury to yourself. If you are uncertain about any part of the installation process, it is recommended that you seek the assistance of a professional mechanic.

### STEP 1: Disassembly

- 1) Jack the vehicle up by placing the jack under the front cross-member. Place the (2) jack stands behind the front tires on the frame to allow the front control arms to unload.
- 2) Start disassembling the old sway bar starting with the end links. The end links may require an impact wrench or cutting them off may be necessary. Remove the old sway bar and bushings from the frame. Fig 1
- 3) Once the old sway bar is out, locate the new supplied Offset sway bar Spacer. Install it to the frame using the supplied hardware. Apply loctite to the threads of the supplied studs and install into the spacer plate.
- 4) Install the Poly Bushing to the new sway bar and apply a small amount of grease to the mating surfaces.
- 5) Install the metal straps and lift the bar into place, Tighten the bar using supplied hardware. Fig 2
- 6) Connect the sway bar end links and set the car onto cribbing. Tighten end links in their neutral position.
- 7) Once installed make sure there are no clearance issues with any other parts by rotating the steering wheel back and forth. Mostly idler arm clearance. Fig 3

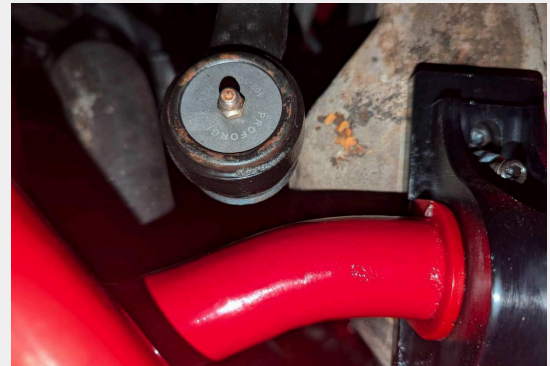
## FIGURES FOR REFERENCE



*Fig. 1 Remove old Bar.*



*Fig 2. New bar and spacer Installed*



*Fig 3. Idler arm clearance.*