

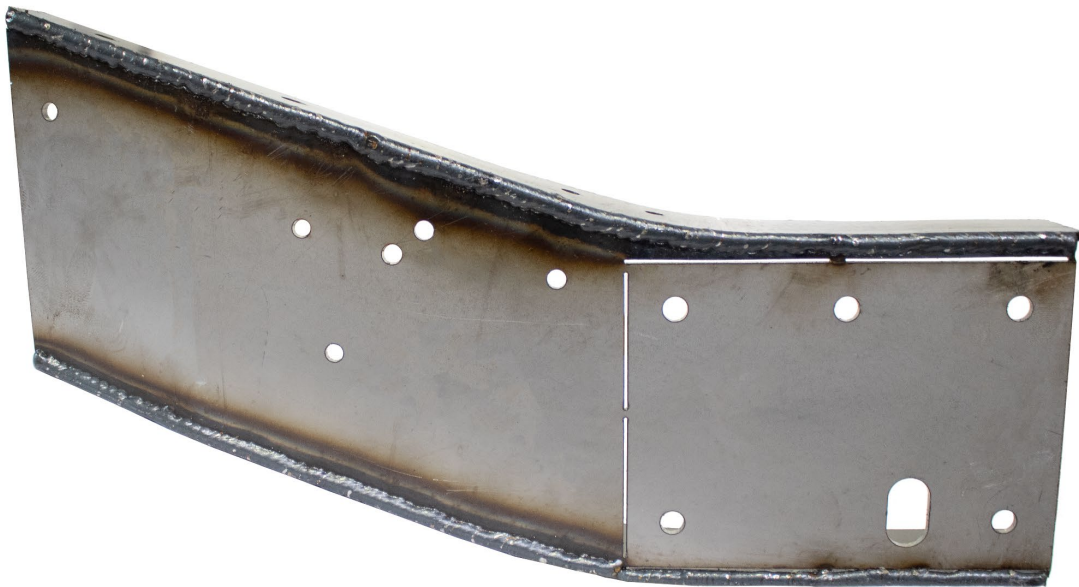


# RUST BUSTER

## RB7370R & RB7370L

### Front Frame Section

### 1973-1987 Chevy C10 - Standard Cab – 8ft Bed



#### REQUIRED TOOLS

Jack Stands or Lift  
Mig Welder  
Paint/Primer  
Hand Grinder  
Cutting Wheel or Torch  
Welding Gloves  
Welding Hood/Shield  
Ear & Eye Protection  
Fire Extinguisher  
C-Clamp

#### KIT CONTAINS

Front Frame Section

#### QTY

1



# RUST BUSTER

**RB7370R & RB7370L**  
**Front Frame Section**  
**1973-1987 Chevy C10 - Standard Cab – 8ft Bed**

## 1) **PREPARING YOUR VEHICLE**

Begin by disconnecting your battery prior to starting your installation.

Inspect your vehicle for leaking fuel lines, fuel tank and engine components. If you have fuel leaks repair all leaks prior to starting your installation. If your fuel tank is near your welding area **remove your tank prior to welding.**

Remove all combustible items above the work area such as seats, carpets, padding, etc.

**Keep all flammable materials away from the vehicle work area.**

## 2) **PREPARING YOUR WORKSTATION**

Keep a fire extinguisher close by in the case of fire and make sure you always have a designated “Fire Watch” to assist during the cutting or welding phases.

Abide by all apprenticed welding safety standards and practices.

Always use appropriate welding eye protection, ear protection, and work and fire safety gloves during the installation and within the work area.



### **WARNING!**

If you are unsure on how to perform the installation or how to operate any of the required tools listed above, it is **HIGHLY** advised that you enlist the work of a certified welder/installer.

Failure to follow proper safety precautions and instructions may result in serious injury. **The user assumes all liability when installing the product.**



# RUST BUSTER

## RB7370R & RB7370L

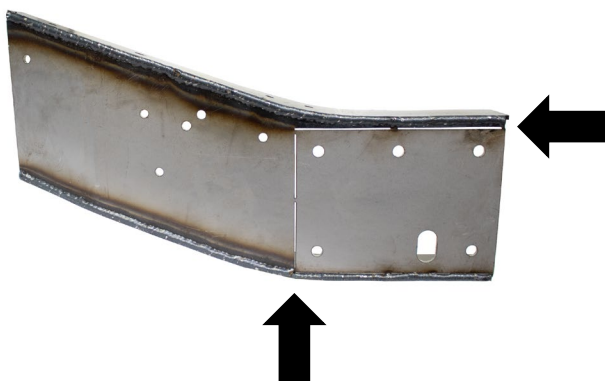
### Front Frame Section

1973-1987 Chevy C10 - Standard Cab – 8ft Bed

#### 3) PREPARING FOR YOUR INSTALL

Move any liners, lines, and power harnesses from the work area.

Our part features a perforated plate that can be removed to allow the part to install around the nearby cab mount. If you wish to retain the mount, remove this plate at this time.

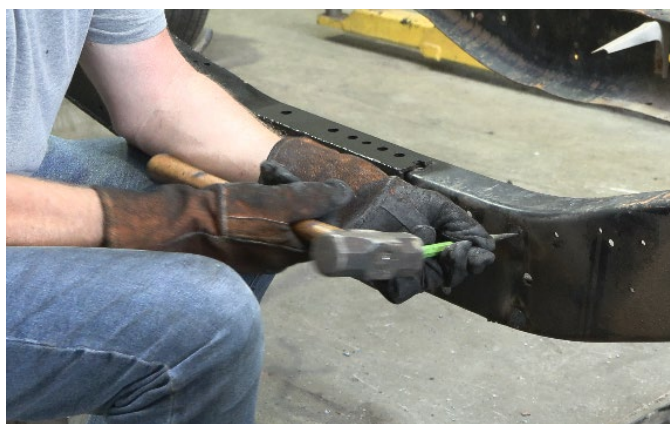
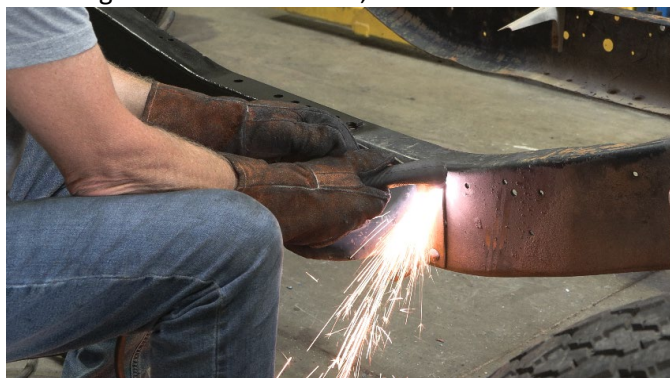


If your mount is in need of replacing, we sell part numbers **RB7359** and **RB7372**, which includes installation hardware, to allow the entire front frame section to be installed. (**Note:** If you are installing the entire section AND replacing the cab mount, you will not have to remove the perforated plate. Simply install the mount onto the section.)



#### 4) CUT

Begin by torching and hole punching out the rivets retaining the front cab mount, and remove it.





# RUST BUSTER

## RB7370R & RB7370L

### Front Frame Section

1973-1987 Chevy C10 - Standard Cab – 8ft Bed

Grind the work area free of rust and debris, revealing bare metal/ followed by coating the work area with a weld through primer to help prevent against further rust development.

Slide the part onto the frame.



If you purchased part number **RB7359** / **RB7372**, install the mount with the included hardware with a 14mm and 13mm socket and wrench.



#### 5) **WELD**

Remove any potential fire hazards from the work area. Following proper welding procedures, tack weld the part onto the frame before welding it on fully. Weld 100% around all edges.



#### 6) **PAINT AND PROTECT**

Coat the part and work area with a primer or other rust inhibitor to help prevent or reduce the risk of rust formation.



We recommend our Rust Buster Rust Converter & Primer Spray Paint (RB9917).



Reinstall liners, lines, and power harnesses.