



RUST BUSTER

RB7317
1999-2006 Chevy® Silverado 1500 &
1999-2006 GMC Sierra 1500
Center Bed Mount



REQUIRED TOOLS

Jack Stands or Lift
Mig Welder
Paint/Primer
Hand Grinder
Cutting Wheel or Torch
Welding Gloves
Welding Hood/Shield
Ear & Eye Protection
Sockets & Ratchet
Fire Extinguisher
Paint Marker

KIT CONTAINS

Center Bed Mount

QTY

1



RUST BUSTER

RB7317

**1999-2006 Chevy® Silverado 1500 &
1999-2006 GMC Sierra 1500
Center Bed Mount**

1) PREPARING YOUR VEHICLE

Begin by disconnecting your battery prior to starting your installation.

Inspect your vehicle for leaking fuel lines, fuel tank and engine components. If you have fuel leaks repair all leaks prior to starting your installation. If your fuel tank is near your welding area **remove your tank prior to welding.**

Remove all combustible items above the work area such as seats, carpets, padding, etc.

Keep all flammable materials away from the vehicle work area.

2) PREPARING YOUR WORKSTATION

Keep a fire extinguisher close by in the case of fire and make sure you always have a designated "Fire Watch" to assist during the cutting or welding phases.

Abide by all apprenticed welding safety standards and practices.

Always use appropriate welding eye protection, ear protection, and work and fire safety gloves during the installation and within the work area.



WARNING!

If you are unsure on how to perform the installation or how to operate any of the required tools listed above, it is **HIGHLY** advised that you enlist the work of a certified welder/installer.

Failure to follow proper safety precautions and instructions may result in serious injury. **The user assumes all liability when installing the product.**



RUST BUSTER

RB7317

**1999-2006 Chevy® Silverado 1500 &
1999-2006 GMC Sierra 1500
Center Bed Mount**

3) PREPARING FOR YOUR INSTALL

Remove the bed mount bolt and bushing.

4) CUT

Cut off the factory center bed mount.



5) WELD

Grind the frame free of rust and debris, revealing bare metal.



Spray the part and work area with a weldable primer.



Hold the part up to the frame and mark off its coverage using a paint marker.

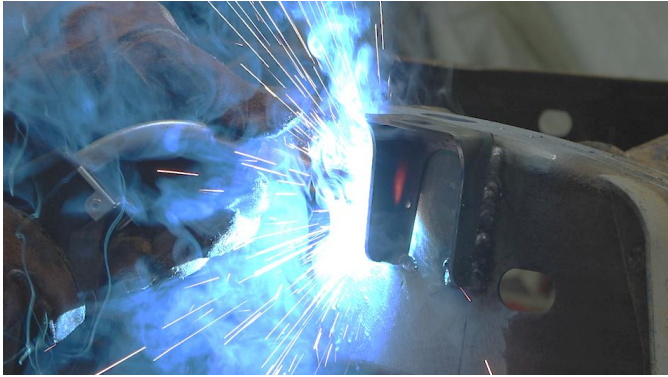


Remove any potential fire hazards from the work area. Following proper welding procedures, tack weld the part on before welding it on. 100% weld around all edges.



RUST BUSTER

RB7317
1999-2006 Chevy® Silverado 1500 &
1999-2006 GMC Sierra 1500
Center Bed Mount



6) PAINT AND PROTECT

Coat the part and work area with a primer or other rust inhibitor to help prevent or reduce the risk of rust formation.



7) REINSTALL

Reinstall the bolt and bushing.