

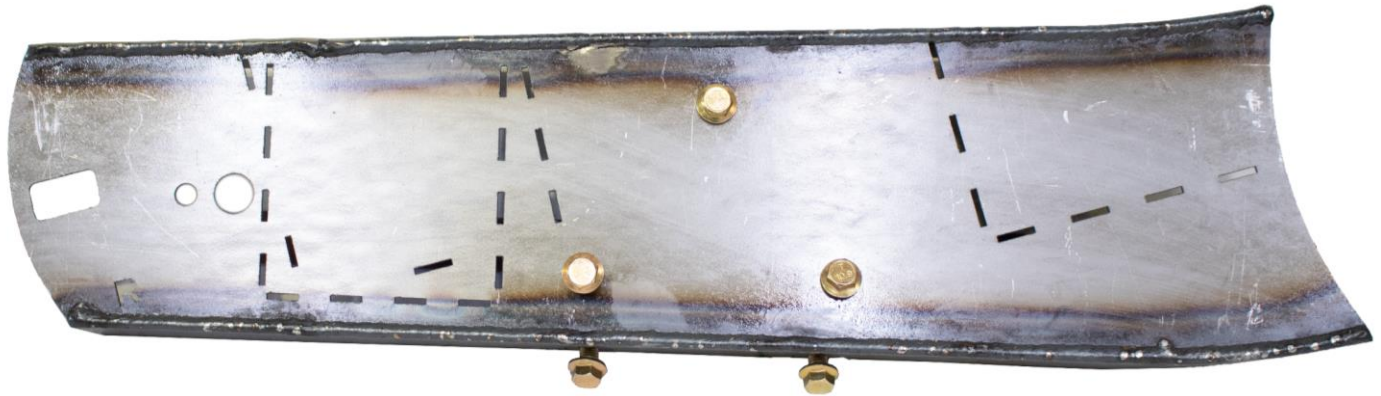


RUST BUSTER

RB7128L & RB7128R Leaf Spring Frame Section 2005-2015 Toyota Tacoma Crew Cab & Extended Cab



VIDEO AVAILABLE



REQUIRED TOOLS

Jack Stands or Lift
Mig Welder
Paint/Primer
Hand Grinder
Cutting Wheel or Torch
Welding Gloves
Welding Hood/Shield
Ear & Eye Protection
Sockets & Ratchet
Fire Extinguisher
Hammer
C-Clamps

KIT CONTAINS

Leaf Spring Frame Section
M10 Flanged Hex Screw
M10 Insert Flange Locknut

QTY

1
5
5



RUST BUSTER

RB7128L & RB7128R Leaf Spring Frame Section 2005-2015 Toyota Tacoma Crew Cab & Extended Cab

1) **PREPARING YOUR VEHICLE**

Begin by disconnecting your battery prior to starting your installation.

Inspect your vehicle for leaking fuel lines, fuel tank and engine components. If you have fuel leaks repair all leaks prior to starting your installation. If your fuel tank is near your welding area **remove your tank prior to welding.**

Remove all combustible items above the work area such as seats, carpets, padding, etc.

Keep all flammable materials away from the vehicle work area.

2) **PREPARING YOUR WORKSTATION**

Keep a fire extinguisher close by in the case of fire and make sure you always have a designated "Fire Watch" to assist during the cutting or welding phases.

Abide by all apprenticed welding safety standards and practices.

Always use appropriate welding eye protection, ear protection, and work and fire safety gloves during the installation and within the work area.



WARNING!

If you are unsure on how to perform the installation or how to operate any of the required tools listed above, it is **HIGHLY** advised that you enlist the work of a certified welder/installer.

Failure to follow proper safety precautions and instructions may result in serious injury. **The user assumes all liability when installing the product.**



RUST BUSTER

RB7128L & RB7128R Leaf Spring Frame Section 2005-2015 Toyota Tacoma Crew Cab & Extended Cab

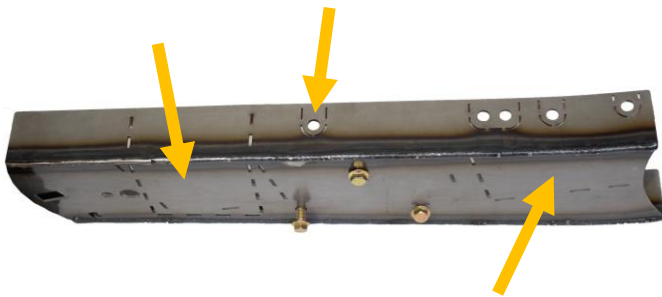
3) PREPARING FOR YOUR INSTALL

Lift up your vehicle. Remove any lines or power harnesses in your work area.

Release the leaf spring hanger by removing the rivets on the side and bottom of the frame using a grinder.

4) CUT

Our part features perforated plates that can be removed to fit over your existing rear cab mount, front bed mount, bracket, and rivets.



If you plan to keep your existing mounts, bracket, or rivets, remove the perforated plates on your part.



Spray the work area with a weldable primer to help prevent against rust development.

5) WELD

Slide your leaf spring frame section onto the frame using the frame holes to help with the alignment. Tap it into place using a hammer. You can c-clamp your part to the frame to ensure a tight fit.

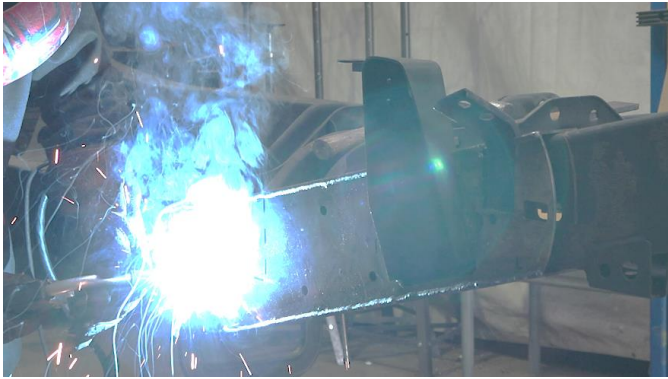




RUST BUSTER

RB7128L & RB7128R Leaf Spring Frame Section 2005-2015 Toyota Tacoma Crew Cab & Extended Cab

Following proper welding procedures, tack weld the leaf spring frame section onto the frame before welding the part on fully. Weld 100% around all edges.



6) REINSTALL

Using the included M10 hardware, reinstall your leaf spring hanger using a 14mm socket and 15mm wrench.

NOTE: You will have to drill out the holds on the frame because the leaf spring hanger shifts down and out because of the added thickness.

7) PAINT

Paint the part with primer or other rust inhibitor to help prevent or reduce the risk of rust formation.

We recommend our Rust Buster Rust Converter & Primer Spray Paint (RB9917).

