

## SPEC SERIES REAR BUMPER

23 + CHEVY COLORADO/GMC CANYON

RBCS3-02



### TOOLS REQUIRED

- Trim clip tool
- 7, 10, 15, 16, 21mm Socket
- #4 Allen Head Tool
- Dremel or drill and drill bits
- Pick to small flat head screw driver
- Metal Snips
- Safety Glasses

### SKILL LEVEL

- Intermediate
- 1 (you) to 2 persons

Medium skill level required, you can easily install it by yourself however, additional help will be useful

### TIME REQUIRED

- 4 Hours

Time to install this should take about four hours

## WARNINGS/CAUTIONS BEFORE STARTING INSTALLATION

Before you install this kit — Read and understand all instructions, warnings, cautions, and notes contained in this installation instruction guide. Consult your vehicle owner's manual for proper disconnection of electrical and lifting of vehicle if required for installation of this product.

This install may require some technical skills and knowledge of basic mechanical work. If you do not feel that you are capable of performing this install please take this product to a trained professional.

After reading this guide please contact us with any questions or concerns before installing product.  
Customer Service: 855-680-9595

*DV8 Offroad is not responsible for any bodily injury or harm to you or your vehicle as a result of an improper install.*

Proper installation of this kit required knowledge of the factory recommended procedures for removal and installation of original equipment components. We recommend that the factory shop manual and any special tools needed to service your vehicle be on hand during the installation. Installation of this kit without proper knowledge of the factory recommended procedures may affect the performance of these components and the safety of the vehicle

- Always wear eye protection when operating power tools

*Inspect all contents of this package to make sure product is not damaged and all installation hardware has been included. If parts are missing from kit, please be prepared to provide the following information*

1. Name of purchase location
2. Bar Code on side of box
3. Date above bar code
4. Date inside box cover



# INSTALLATION MANUAL

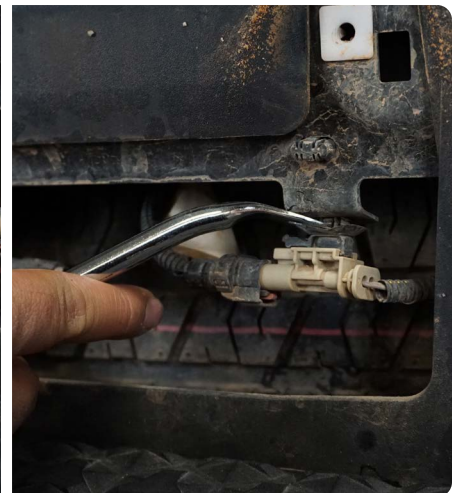
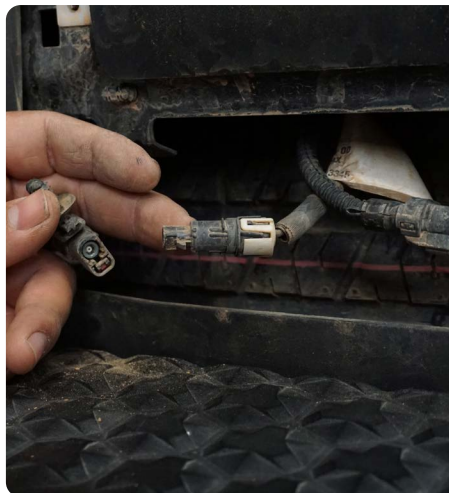
Begin by unpacking all items and inspecting for missing pieces or damage. If you have any concerns, please contact the company the product was purchased from. Extra hardware may be included with the product.

## HARDWARE INCLUDED

- |                         |                  |
|-------------------------|------------------|
| (8) M10x30mm Bolts      | (10) M6 Washers  |
| (8) M10 Washers         | (6) M6 Lock Nuts |
| (8) M10 Split Washers   | (2) M6x16 Bolts  |
| (8) M10 Flat Nuts       |                  |
| (4) M6x20mm Allen Bolts |                  |



**STEP 1** | Remove the rear license plate, disconnect the two electrical plugs behind the license plate. Use a Trim clip tool to free the factory harness.



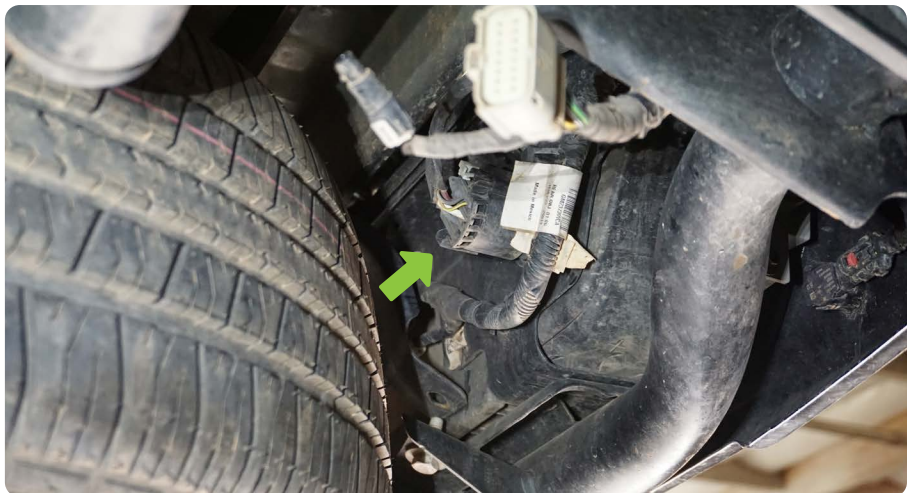
# INSTALLATION **MANUAL**

---

**STEP 2** | Disconnect the (2) wiring harnesses located on the inside of the driver side frame rail.



**STEP 3** | Disconnect the trailer light socket.





## INSTALLATION **MANUAL**

**STEP 4** | Use a 21mm socket to remove the rear bumper side supports from the frame rails on each side.



**STEP 5** | Use a 21mm socket to remove the (4) bolts that secure the tow hitch/bumper support to the frame rail.

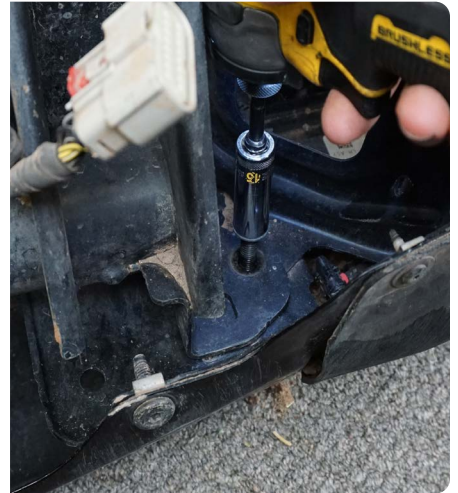
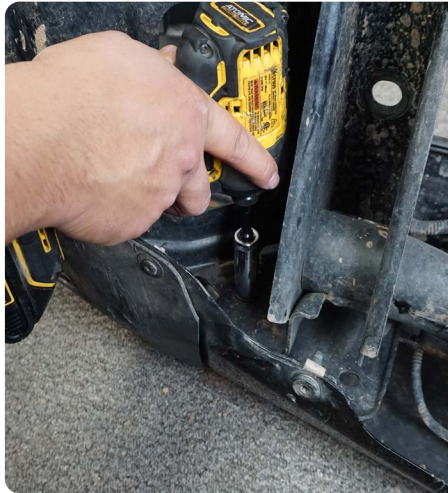
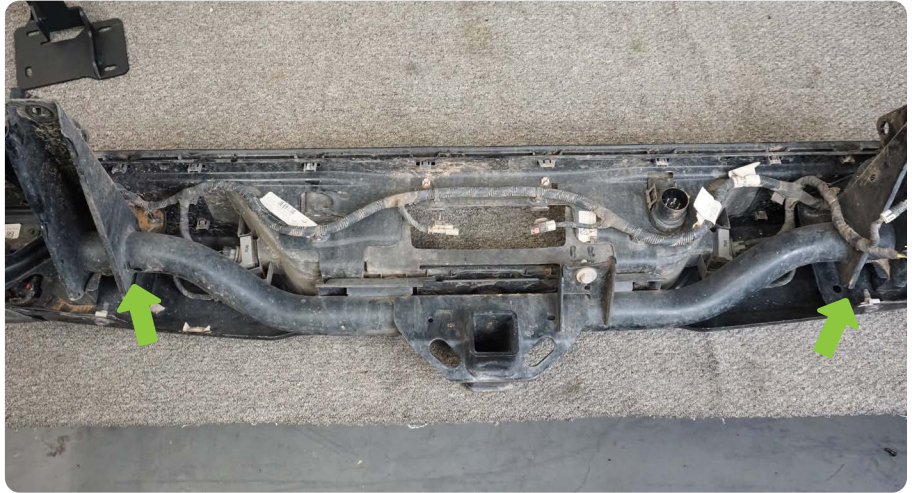
**Note:** Take caution as the bumper will be freed from the vehicle once these (4) bolts are removed. (Assistance recommended)

With assistance, remove the factory rear bumper.



# INSTALLATION **MANUAL**

**STEP 6** | Remove the tow hitch/  
bumper support using a 15mm socket.





# INSTALLATION MANUAL

**STEP 7 |** Use a 7mm socket to remove the (2) bolts securing the Blind Spot monitoring sensors.

Disconnect the Blind Spot sensors and set them off to the side.

**Note:** Keep the sensors in order as they are specific to each side.



**STEP 8 |** Remove the back up sensors by gently prying apart the sensor bezel tabs and pressing the sensor out from the front side.



## INSTALLATION MANUAL

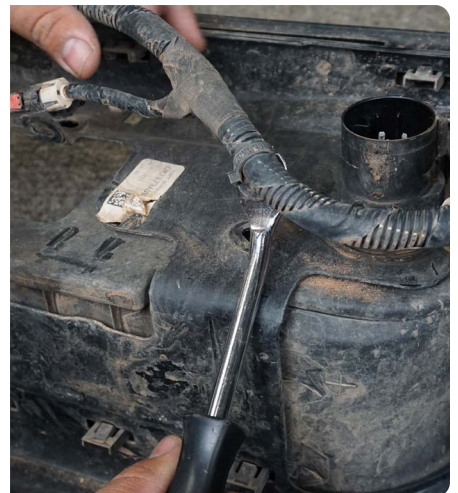
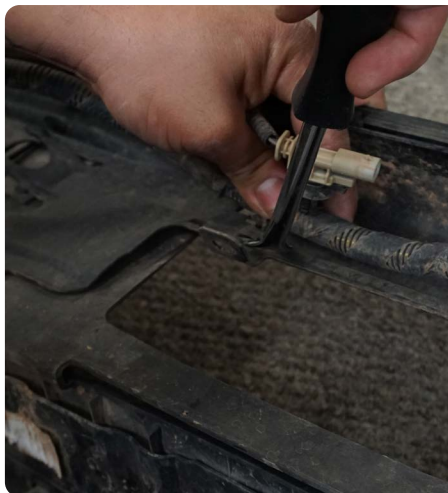
**STEP 9** | Use a 7mm socket to remove the factory license plate lights.



**STEP 10** | Use a trim clip tool to remove the trailer light socket. Depress the clip on each side and press the trailer socket out the front of the bumper.



**STEP 11** | Use a trim clip tool to free the sensor/light harness from the bumper.

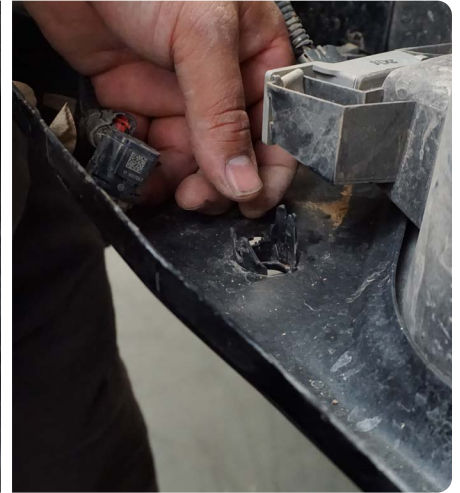
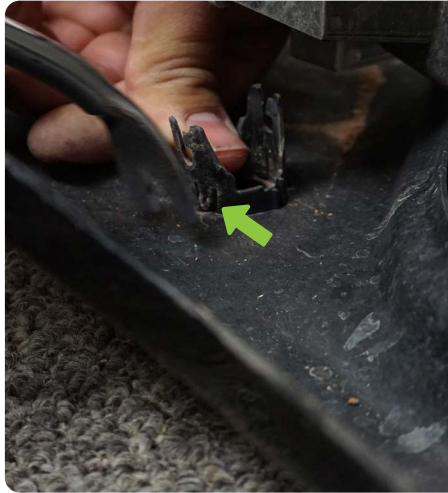




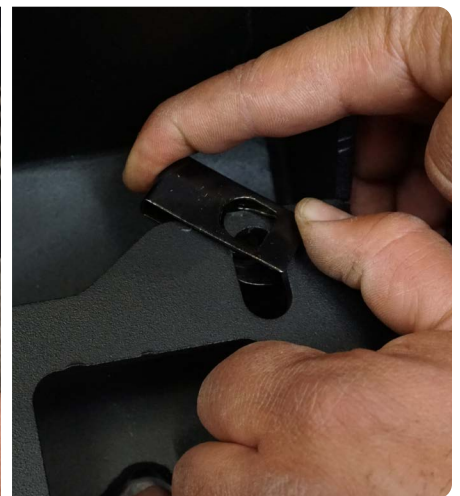
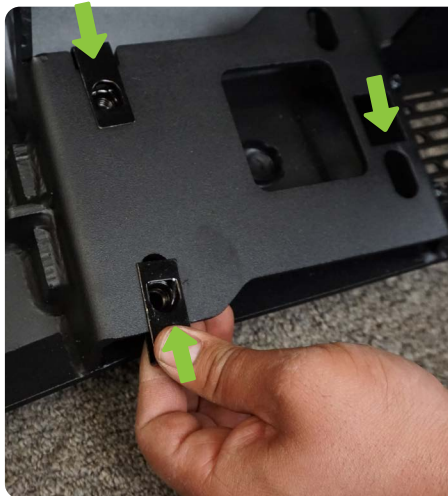
## INSTALLATION MANUAL

**STEP 12 |** Remove the factory sensors bezels by pinching in the locking tabs and pressing the bezel out the front of the bumper.

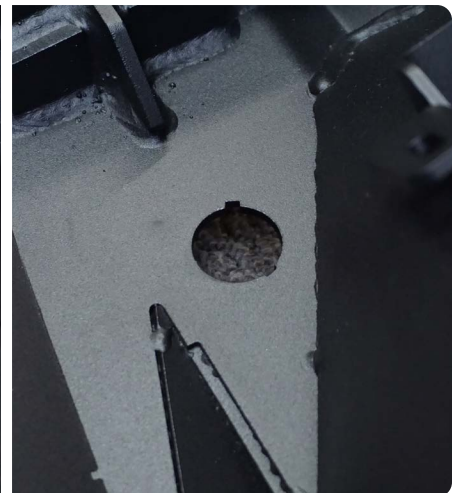
Set the sensor harness and bezels off to the side, keep the bezels in order as they are position specific.



**STEP 13 |** Start assembling the DV8 bumper by first installing the bumpers mounting nut clips.



**STEP 14 |** If your vehicle is back up sensor equipped, remove the DV8 sensor plugs by pressing them out through the front of the bumper.





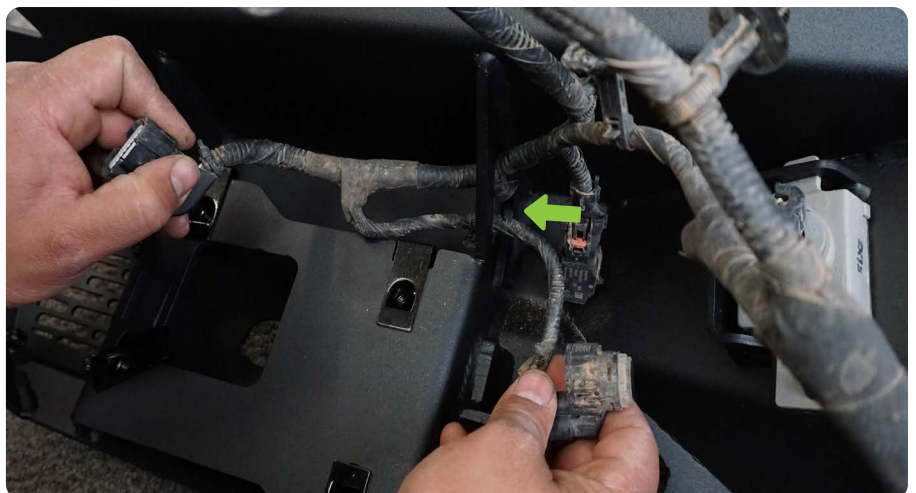
# INSTALLATION MANUAL

**STEP 15** | Disconnect the Blind Spot sensors by pulling the Red tab back, depressing the Black clip and separating the sensor from the harness.



**STEP 16** | Install the factory license plate lights using the provide M6 hardware and #4 allen.

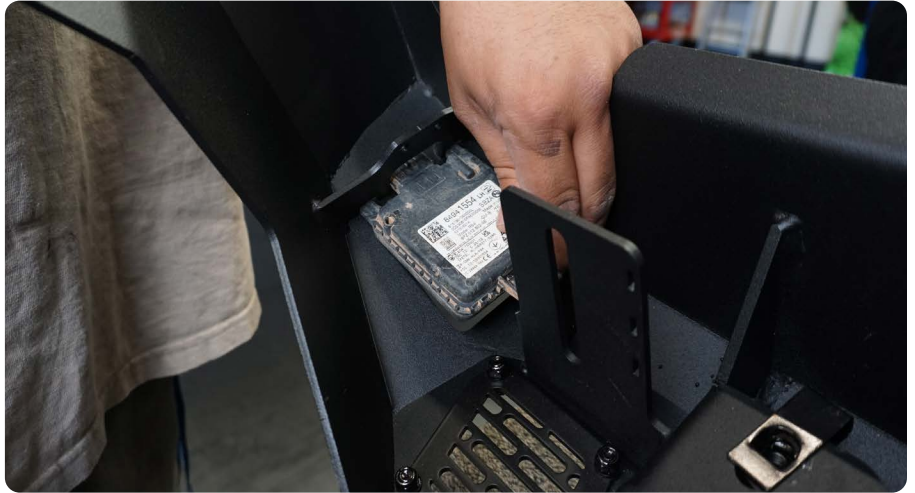
Route the factory sensor/license plate light harness through the bumper braces while aligning the sensors in the correct position.



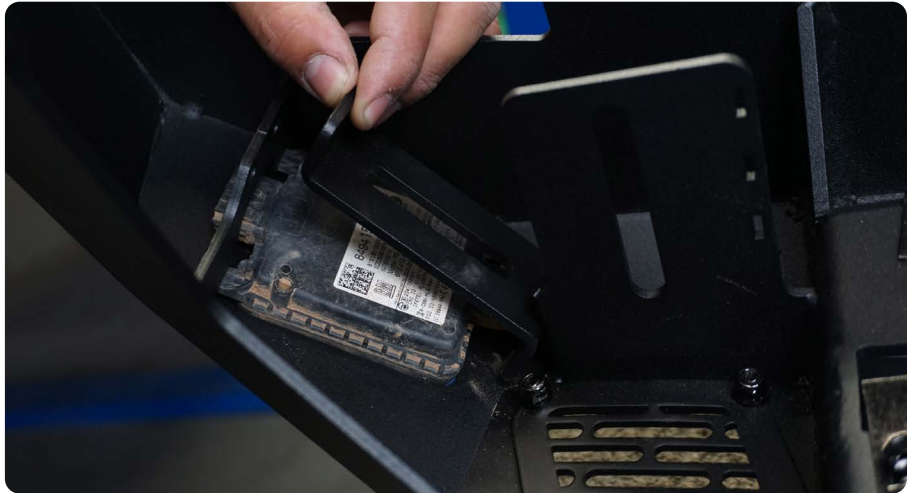
## INSTALLATION MANUAL

---

**STEP 17** | Install the Blind Spot sensors onto the DV8 bumper. Ensure the sensors are in the same position on the new bumper as they were on the factory bumper.



**STEP 18** | Use the provided retaining bracket and M6 hardware, 10mm and #4 Allen tool to secure the Blind Spot sensor in place.



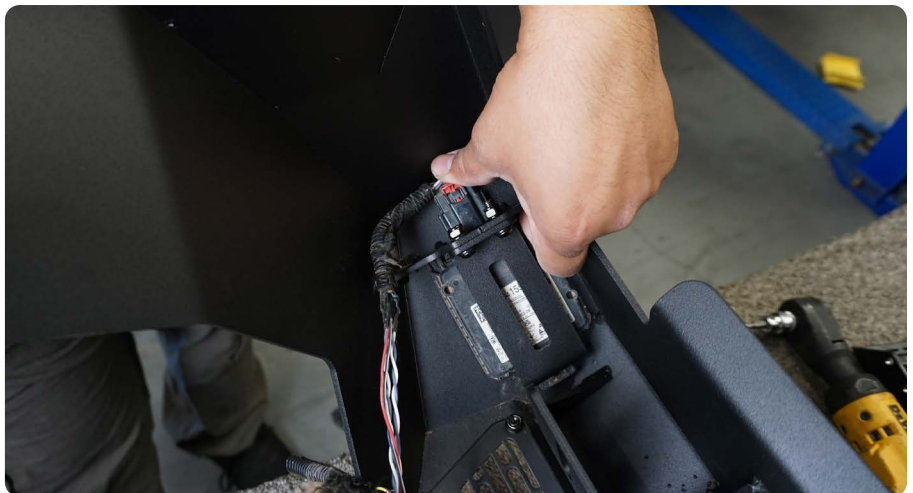
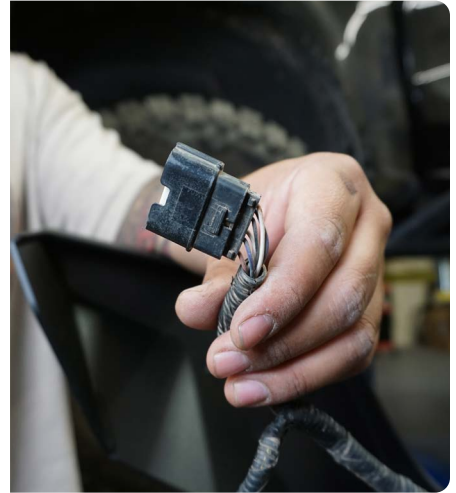


# INSTALLATION MANUAL

**STEP 19** | Remove the blind spot sensors wire guide. Unravel the wiring loom, separating the parking sensor wires from the blind spot sensor harness.

By pulling back the loom, more wire length will be exposed allowing for the wires to reach the sensor.

Re-wrap any exposed wires with electrical tape to keep them together.



## INSTALLATION MANUAL

**STEP 20 |** Use a pair of cutters to trim down the sensor bezel locking clip on each side of the bezel.

**Note:** Sensor bezel locking clip must be cut to allow the bezel to seat properly as the thickness of the DV8 bumper is thicker than factory.



**STEP 21 |** Install the sensor bezel in the same position they were removed from, install the sensor into the bezel to expand the bezels locking tabs to lock the sensor and bezel in place.

**Note:** If too much of the locking tab was cut off and bezel/sensor fall out, use a small amount of silicone on the keep the bezel in place.





## INSTALLATION MANUAL

---

**STEP 22** | Plug in the sensors to the bezels from the backside until they click into place.

*Note: If you notice any pulling or angles on the sensor bezels, a small dab of silicone on the bottom side can help secure them.*



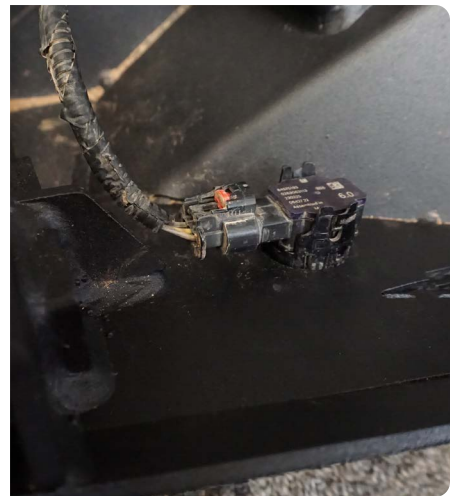
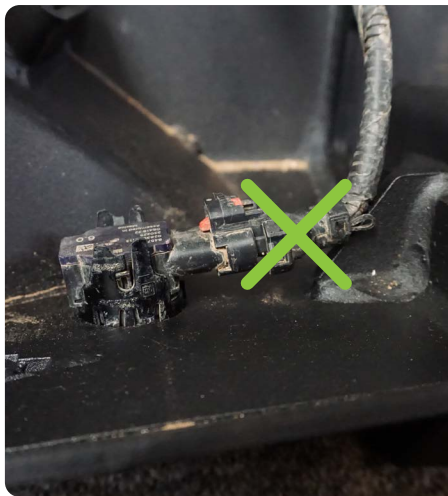
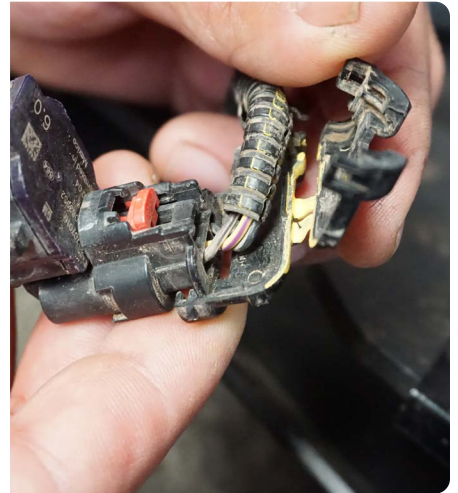
**STEP 23** | If planning to run LED pod lights, install them at this time using the hardware that is provided with the LED pod light.

*Note: This DV8 rear bumper accepts up to (2) 3" Pod lights. For this install we chose to run the DV8 Elite 3" LED Pod lights.*



**STEP 24** | Remove the sensors wire guide to help in routing the sensor/harness to the correct position.

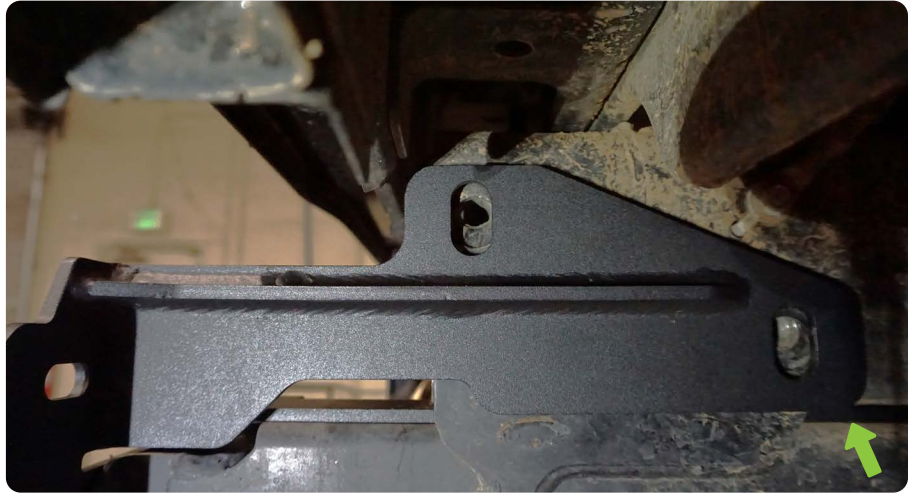
Use a pick tool to pry open the wire guide





## INSTALLATION MANUAL

**STEP 25** | With assistance mock up the tow hitch ("bumper support" if not equipped with a hitch) up to the frame rails with the provided bumper mounting brackets sandwiched between the frame rail and tow hitch.



**STEP 26** | The factory tow hitch/ bumper support frame bracket mounting holes will need to be slightly slotted. Mark the amount of material that will need to be removed.



**STEP 27** | Use a small sanding wheel or drill bit to remove the material and slot the mounting holes on each side.



## INSTALLATION MANUAL

**STEP 28** | Mount the **tow hitch** with the provided bumper mounting brackets sandwiched between the frame rail and tow hitch.

Use the factory hardware and a 21mm socket to loosely secure the hitch and brackets to the frame as shown.



**STEP 29** | With assistance, fit the bumper into place and using the M10 hardware, install the four M10 bolts per side by hand.

Once mounted, align the bumper side to side and up and down and secure using a 16mm socket/wrench.



**STEP 30** | Reconnect two plugs removed during the uninstall.





## INSTALLATION MANUAL

**STEP 31** | Reconnect the trailer plug wiring.



**STEP 32** | Double check all hardware is secure and all plugs are reconnected.



**STEP 33** | Road test to ensure all sensors and lights are working properly.

Congratulations, you are completed the install of your new 23+ Chevy Colorado Spec Series rear bumper!

