

## SPEC SERIES FRONT BUMPER

2022+ GMC SIERRA 1500

FBGC1-03



### TOOLS REQUIRED

- T15 Torx Tool
- #4, #6 Allen Tool
- 18mm, 19mm, 21mm, 22mm wrenches
- 8mm, 10mm, 13mm 15mm, 18mm, 21mm sockets
- 12" Socket Extension
- Flush cutters
- Trim Tool
- Safety Glasses

### SKILL LEVEL

- Intermediate
  - 1 (you) to 2 persons
- Medium skill level required, you can easily install it by yourself however, additional help will be useful.

### TIME REQUIRED

- 3.5 Hours
- Time to install this should only take about 3.5 Hours.

## WARNINGS/CAUTIONS BEFORE STARTING INSTALLATION

Before you install this kit — Read and understand all instructions, warnings, cautions, and notes contained in this installation instruction guide. Consult your vehicle owner's manual for proper disconnection of electrical and lifting of vehicle if required for installation of this product.

This install may require some technical skills and knowledge of basic mechanical work. If you do not feel that you are capable of performing this install please take this product to a trained professional.

After reading this guide please contact us with any questions or concerns before installing product.  
Customer Service: 855-680-9595

*DV8 Offroad is not responsible for any bodily injury or harm to you or your vehicle as a result of an improper install.*

Proper installation of this kit required knowledge of the factory recommended procedures for removal and installation of original equipment components. We recommend that the factory shop manual and any special tools needed to service your vehicle be on hand during the installation. Installation of this kit without proper knowledge of the factory recommended procedures may affect the performance of these components and the safety of the vehicle

- Always wear eye protection when operating power tools

*Inspect all contents of this package to make sure product is not damaged and all installation hardware has been included. If parts are missing from kit, please be prepared to provide the following information*

1. Name of purchase location
2. Bar Code on side of box
3. Date above bar code
4. Date inside box cover

# INSTALLATION MANUAL

Begin by unpacking all items and inspecting for missing pieces or damage. If you have any concerns, please contact the company the product was purchased from. Extra hardware may be included with the product.

## HARDWARE INCLUDED

- |                                |                              |
|--------------------------------|------------------------------|
| (16) M14x35mm Bolts            | (6) M12 Nut Clips            |
| (16) M14 Lock Nuts             | (4) M10x30 Allen Head Bolts  |
| (32) M14 Flat Washers          | (4) M10 Split Washers        |
| (4) M12x95mm Half Thread Bolts | (4) M10 Flat Washers         |
| (6) M12x35mm Hex bolts         | (4) M6x20mm Allen Head Bolts |
| (14) M12 Flat Washers          | (4) M6 Nylon Lock Nuts       |
| (6) M12 Split Washers          | (8) M6 Flat Washers          |
| (4) M12 Nylon Lock Nuts        |                              |



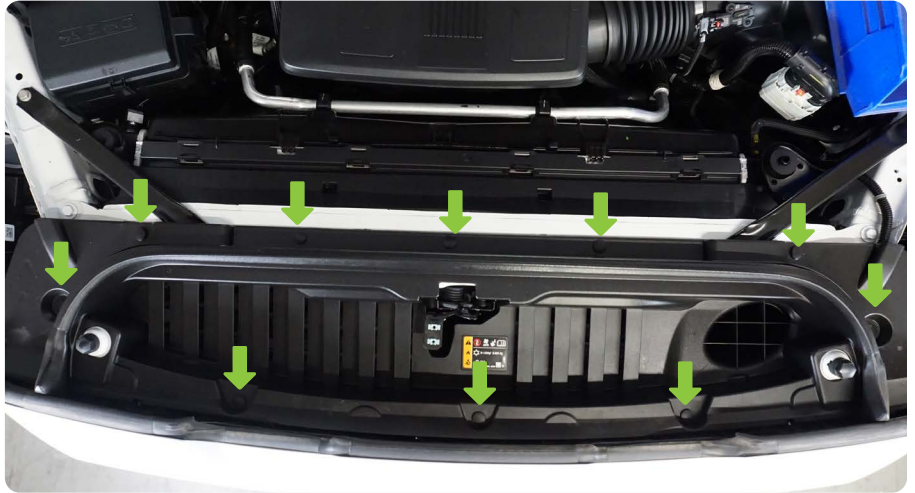
**STEP 1** | Begin by opening the hood and removing the hood latch bolts using a T15 torx tool.



## INSTALLATION MANUAL

**STEP 2 |** Use a trim tool to remove the clips that secure the intake scoop to the vehicle.

Remove the intake scoop and set it off to the side.



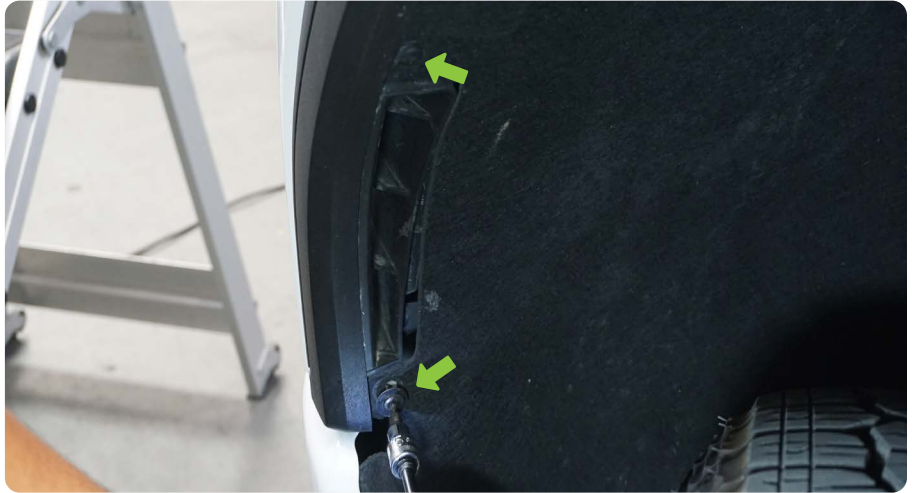
**STEP 3 |** Using a 10mm socket, remove the (4) bolts securing the top of the grille to the vehicle.





## INSTALLATION MANUAL

**STEP 4 |** Moving to the wheel wells, use a T15 torx tool to remove the (2) bolts that secure the inner fender to the lower fascia on both sides.



**STEP 5 |** With a firm grip, carefully, pull the front of fender flare away from the vehicle body.

**Note:** Do not remove the fender flare completely.



**STEP 6 |** Using a 8mm socket, remove the bolt that secure the lower fascia to the fender on each side.



## INSTALLATION MANUAL

**STEP 7** | Using an 12" extension and a 8mm socket. Loosen the (2) bolts that secure the lower fascia on each side.

**NOTE:** Only loosen these bolts 50%.



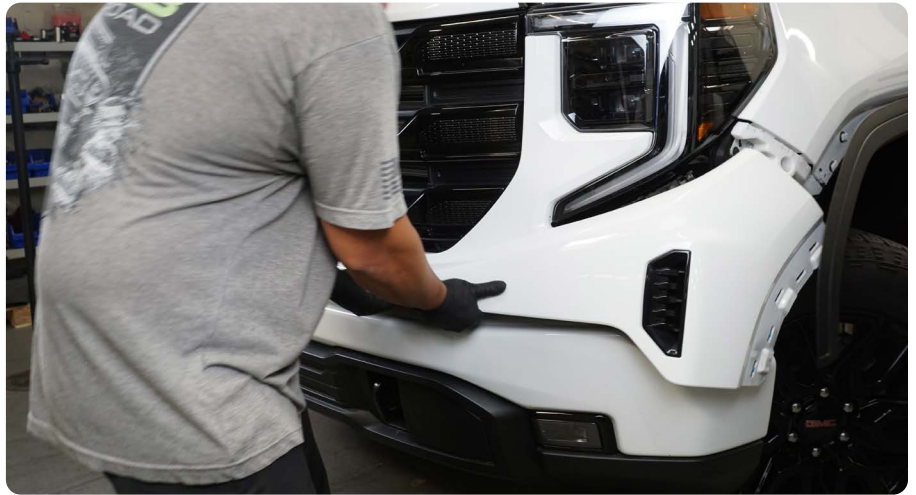
**STEP 8** | Carefully start to pull the lower fascia away from the vehicle with a firm grip.

Use a trim tool to carefully pop the clips around the headlights.



# INSTALLATION MANUAL

---





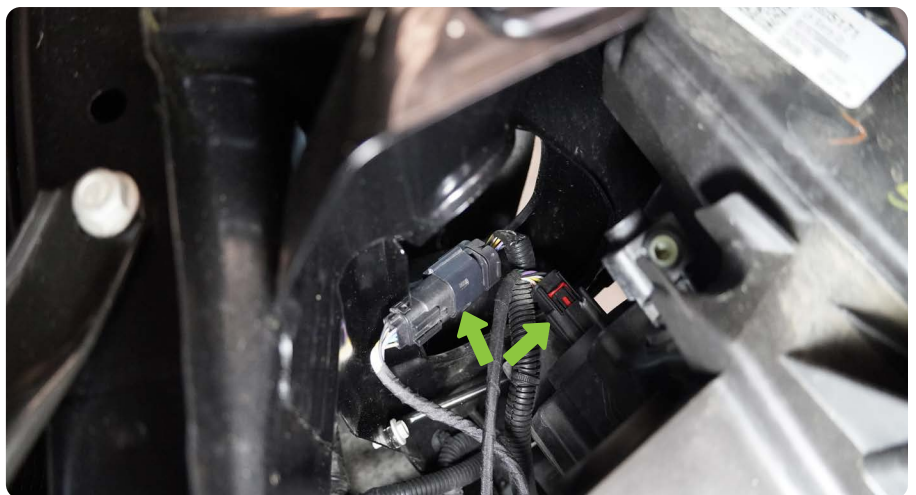
## INSTALLATION MANUAL

**STEP 9** | Use a 10mm socket to remove the (3) lower grille bolts.

Carefully remove the grille assembly, disconnect the front camera and front camera washer fluid hose if equipped.



**STEP 10** | If your vehicle is equipped with an illuminated grille emblem, disconnect the (2) electrical plugs behind the driver side headlight.



## INSTALLATION MANUAL

**STEP 11** | Use a 10mm socket to remove the (9) bolts that secure the upper active air grille shutter.

Slightly pull the active air grille shutter away from the vehicle to disconnect the shutters electrical plug. Depress the push tab and separate the two electrical plugs.

Remove the shutter assembly and set it off to the side.



**STEP 12** | Disconnect the bumpers wiring harness located below the passenger headlight. Pull back the red locking tab and depress the push tab to separate the two electrical plugs.



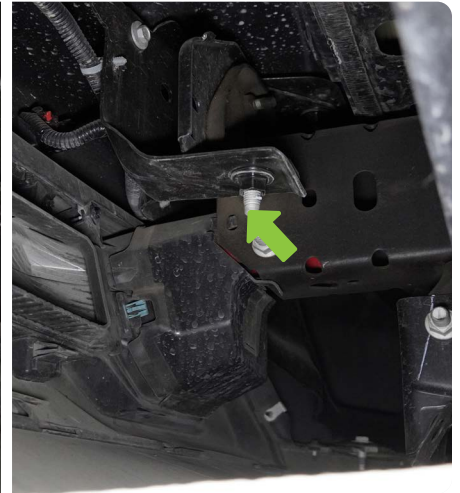


## INSTALLATION MANUAL

**STEP 13** | Moving under the front bumper, use a 15mm socket to remove the bumper supports from each side.



**STEP 14** | Use an 18mm socket to remove the (2) lower bumper mounting bolts on the inside of the frame rails.



**STEP 15** | Use a 10mm socket to remove the (4) bolts securing the bumpers lower valance .



## INSTALLATION MANUAL

**STEP 16** | Use a 18mm socket to remove the (2) upper mounting bolts.

Remove the bumper and set it off to the side on a protect surface.



**STEP 17** | Use a 15mm socket to remove the (6) bolts that secure the factory bumper mounting plate to the frame rails.



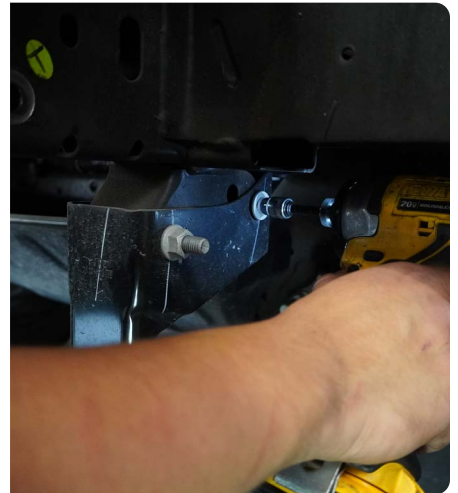
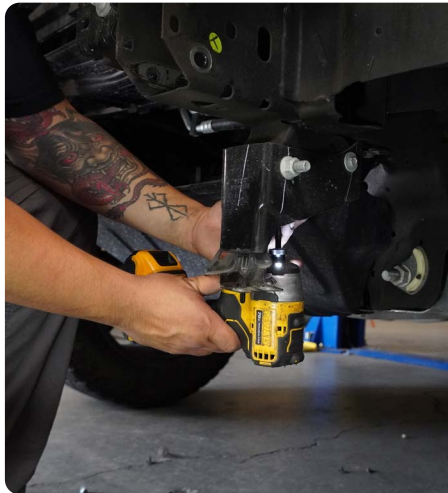
**STEP 18** | Use an 18mm socket and an adjustable wrench to remove to remove the front recovery hooks.



## INSTALLATION MANUAL

---

**STEP 19** | Use an 18mm & 10mm socket to remove the lower crash bars.



**STEP 20** | Use a 10mm socket to remove both front inner fender supports.





## INSTALLATION MANUAL

**STEP 21** | Using a 15mm socket, remove the four bolts shown to remove the skid plate.



**STEP 22** | Lay the factory front bumper face down on a moving blanket or covered work bench.

Use a 13mm socket to remove the (7) bolts securing the bumper supports.



**STEP 23** | Using a trim tool, remove the clips holding the harness to the bumper.

Remove the sensors from the sensor bezels by gently pulling the outside tabs apart and pull the sensor back away from the face of the bumper





**STEP 24** | With the harness and sensors removed, push in the two retainer tabs on the bezels and push them out the front of the bumper.

**Note:** Keep note of bezel location to reuse on new bumper.





## INSTALLATION MANUAL

**STEP 25** | Once the disassembly of the factory bumper is complete, lay the center section of the DV8 bumper on a smooth surface to prevent damage. Install the M12 flat nuts provided onto the main mounting holes by pushing them into place.



**STEP 26** | Install the skid plate using a #6 Allen head and M8 Allen hardware. Ensure the bottom of the bumper and bottom of the skid plate are even.



**STEP 27** | If running a winch, use the hardware provided with the winch to install the winch onto the winch plate.

Install the fair-lead onto bumper prior to installing winch and winch plate onto bumper, using the hardware provided with the fair-lead.





## INSTALLATION MANUAL

**STEP 28 |** Install the winch plate onto the bumper, using the M14 hardware provided loosely secure the winch plate to the bumper. Use two flat washers per bolt.

Using a 21mm socket and 22mm wrench secure the winch to the bumper.



**STEP 29 |** Place the provided foam onto the mating surface of the bumper or wings as shown.



## INSTALLATION MANUAL

**STEP 30 |** Using a 21mm socket and 22mm wrench, install the side wings onto the bumper using the provided M14 hardware. Ensure the top and face of the wings are aligned with the bumper.

If running LED pod lights, install the lights using the hardware provided with the light.

*We are using the DV8 3" Elite Pod lights for this install.*



**STEP 31 |** If running a 20" dual row light behind the mesh, use the provided M6 hardware to loosely secure the provided brackets.



**STEP 32 |** Using the hardware provided with the light, install the light onto the brackets and secure the light to the brackets.

Using a 10mm socket and #4 Allen head, secure the brackets to the bumper.

*We are using the DV8 20" Elite LED Light bar for this install.*





## INSTALLATION MANUAL

**STEP 33** | Before installing the parking sensor bezels, trim 1/16th of inch off the bezels (4) locking tabs.

**NOTE:** Due to the thickness of the DV8 bumper, bezel locking tabs must be trimmed to allow proper sensor installation.



**STEP 34** | Install the sensor bezels into the DV8 front bumper by pressing them into the bumper from the front side.

**NOTE:** The DV8 bumper bezel cutouts are keyed so that the bezel will only fit one way. Ensure the bezels are installed in same position they were removed from. Installing bezels in the incorrect positions will cause sensor issues.





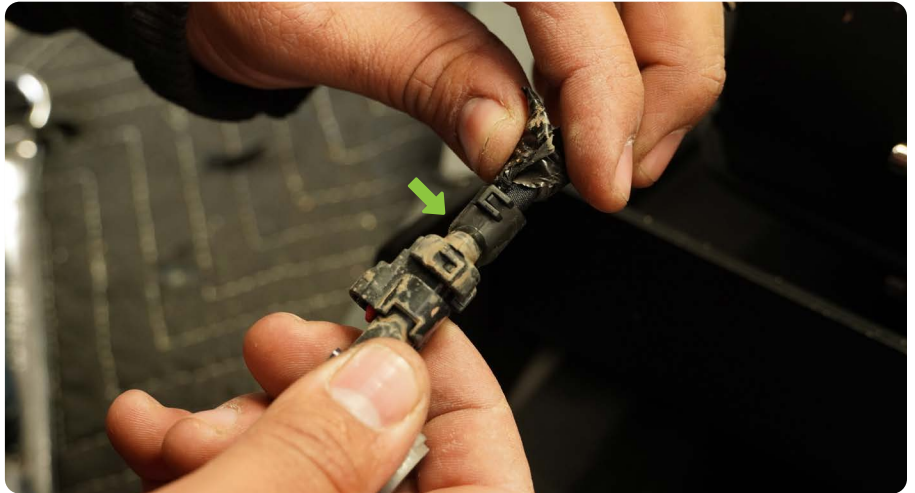
## INSTALLATION MANUAL

**STEP 35** | Route the parking sensor wiring harness through the bumper.

*Tech Tip: If running a light bar, route the wiring harness in front of the light bar bracket/under the light bar.*



**STEP 36** | Before installing the sensors, unwrap the harness tape to remove the wire stiffener.



## INSTALLATION MANUAL

**STEP 37** | Install the parking sensors in to there bezels until it clicks into place.

Ensure the sensor and sensor gasket is seated evenly in the bezel.

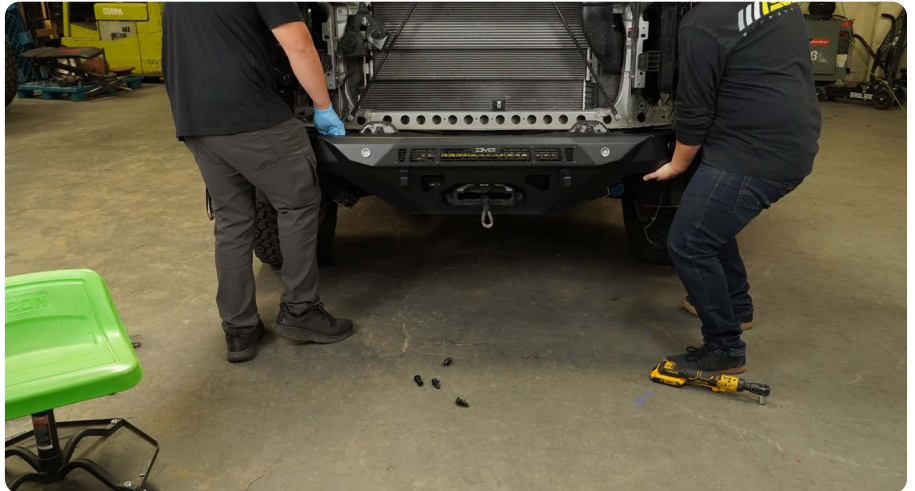
DV8 bumper build-out is now complete.



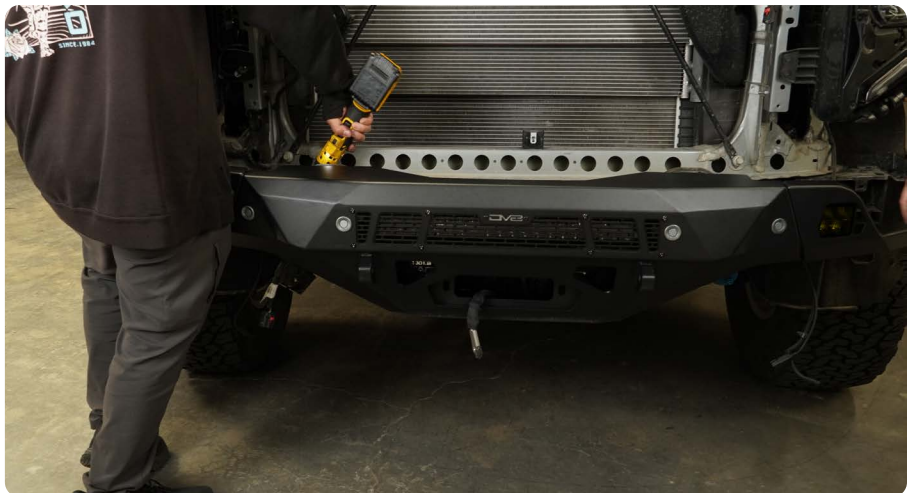
**STEP 38** | With assistance, lift the bumper up to the vehicle. Loosely secure the bumper to the frame plates using the provided M12 Hex bolts.

Use (1) M12 Split washer and (1) M12 flat washer.

**Tech Tip:** Loosely install the lower fascia to check bumper hight.



**STEP 39** | Use a 18mm socket to secure the bumper in place and reconnect the bumper harness.





## INSTALLATION MANUAL

**STEP 40** | Secure the skid plate to the vehicles front cross-member using the factory skid plate bolts and an 13mm socket.



**STEP 41** | Cut the front of the inner fender to your preferred length.

For our install we cut above the tab that secures the inner fender to the front fascia.

**Note:** Cut inner fender only, do not cut metal support bracket.







**STEP 42** | To secure the inner fender, use a pick to poke a hole through the inner fender, using the factory welded nut as a guide.

Use a factory 10mm bolt previously removed in step 20, from the plastic inner fender support, to secure the inner fender.



## INSTALLATION MANUAL

---

**STEP 43** | Use the provided brackets to brace the bumper to the crash-bar frame mounts.

Use the provided half threaded M12x95mm bolts and M12 hardware to loosely secure the bracket to the frame mount.

Use (1) flat washer on the hex bolt and (1) flat washer on the nylon lock nut side.





## INSTALLATION MANUAL

---

**STEP 44** | Use the M14x35mm bolts and M14 hardware to loosely secure the bracket to the bumper/skid plate.

Use (1) M14 flat washer on the hex bolt and (1) M14 flat washer on the nylon lock nut side.

Use a 21mm socket and an 22mm wrench to secure the M14 hardware.



**STEP 45** | Use a 18mm socket and an 19mm wrench to secure the M12 hardware.





## INSTALLATION MANUAL

---

**STEP 46 |** Reinstall the upper active air shutter, grille assembly, and lower fascia back onto the vehicle in the reverse order they were removed.

Congratulations, installation of the DV8 22+ GMC Spec Series front bumper is now complete.

