

CENTRIC FRONT BUMPER

15-20 CHEVY COLORADO

FBCS3-03



TOOLS REQUIRED

- T15 Torx Tool
- #4, #5 Allen Tool
- 7,10,14,15,16mm Sockets
- Preferred cutting tool
- Trim Tool
- File/ sandpaper
- Safety Glasses

SKILL LEVEL

- Novice/Intermediate
 - 1 (you) to 2 persons
- Little skill level required, you can easily install it by yourself however, additional help will be useful

TIME REQUIRED

- 4.5 Hours

Time to install this should only take about 4.5 Hours.

WARNINGS/CAUTIONS BEFORE STARTING INSTALLATION

Before you install this kit — Read and understand all instructions, warnings, cautions, and notes contained in this installation instruction guide. Consult your vehicle owner's manual for proper disconnection of electrical and lifting of vehicle if required for installation of this product.

This install may require some technical skills and knowledge of basic mechanical work. If you do not feel that you are capable of performing this install please take this product to a trained professional.

After reading this guide please contact us with any questions or concerns before installing product.
Customer Service: 855-680-9595

DV8 Offroad is not responsible for any bodily injury or harm to you or your vehicle as a result of an improper install.

Proper installation of this kit required knowledge of the factory recommended procedures for removal and installation of original equipment components. We recommend that the factory shop manual and any special tools needed to service your vehicle be on hand during the installation. Installation of this kit without proper knowledge of the factory recommended procedures may affect the performance of these components and the safety of the vehicle

- Always wear eye protection when operating power tools

Inspect all contents of this package to make sure product is not damaged and all installation hardware has been included. If parts are missing from kit, please be prepared to provide the following information

1. Name of purchase location
2. Bar Code on side of box
3. Date above bar code
4. Date inside box cover



INSTALLATION MANUAL

Begin by unpacking all items and inspecting for missing pieces or damage. If you have any concerns, please contact the company the product was purchased from. Extra hardware may be included with the product.

HARDWARE INCLUDED

- | | |
|------------------------------|----------------------------|
| (4) M10x40mm Hex bolts | (4) M6 Nylon Lock Nuts |
| (4) M10 Flat Washers | (3) M8x30 Allen Head Bolts |
| (4) M10 Split Washers | (3) M8 Split Washers |
| (4) M6x20mm Allen Head Bolts | (6) M8 Flat Washers |
| (8) M6 Flat Washers | (3) M8 Nut Plate |



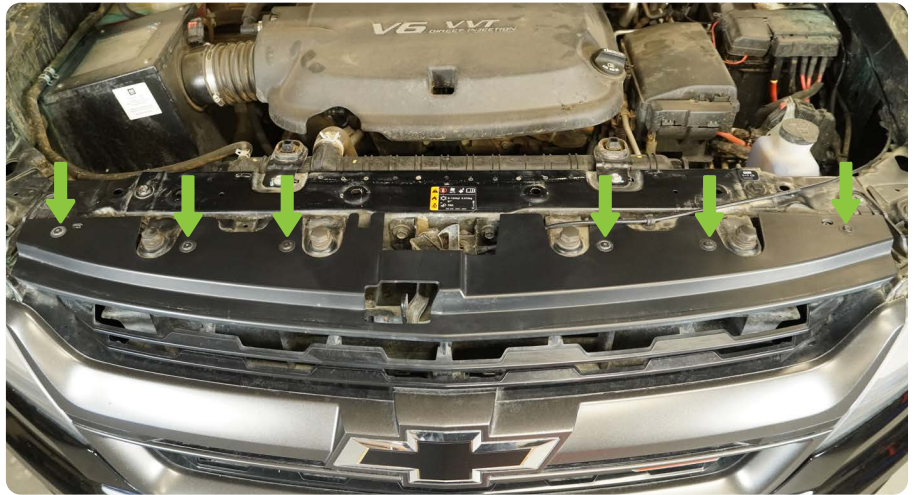
STEP 1 | Begin by removing the factory bolt that secure the inner fender to the front bumper on each side using a T15 torx tool.



INSTALLATION MANUAL

STEP 2 | Use a T15 torx tool to remove the (6) bolts that secure the radiator support cover to the vehicle.

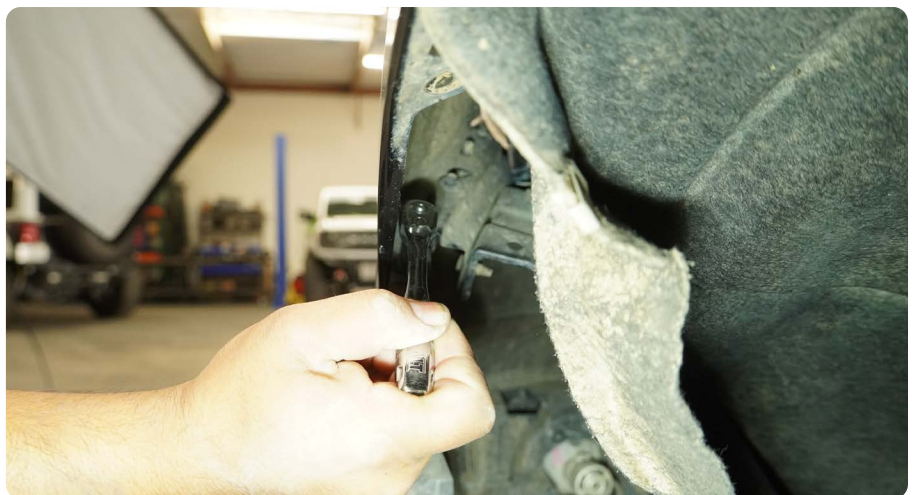
Set the cover off to the side.



STEP 3 | Peel back the inner fender to expose the bumpers backside.

Use an 8mm socket or wrench to loosen the (3) bolts that secure the bumper to the fender on each side.

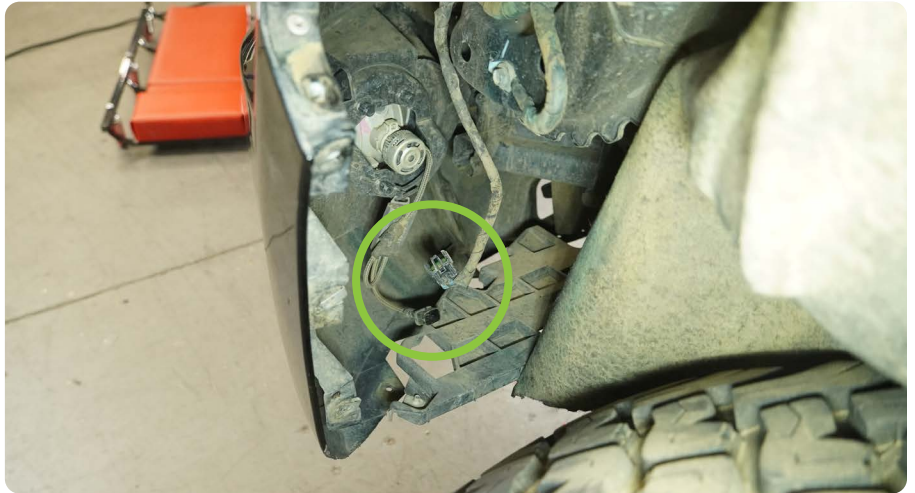
Only loosen these bolts 50%.



INSTALLATION MANUAL

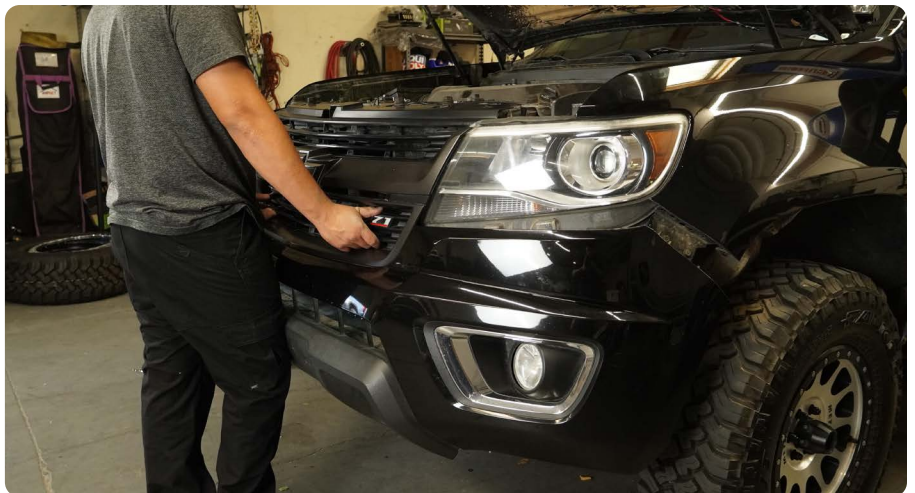
STEP 4 | Carefully separate the bumper from the fenders.

Disconnect the fog lights at this time (if equipped).



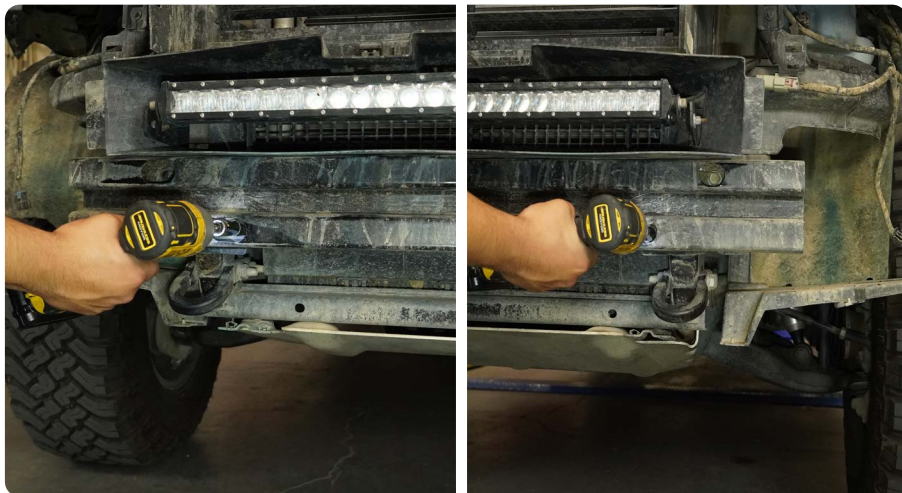
STEP 5 | Remove the bumper/grille assembly from the vehicle with a firm grip

Set the bumper/grille assembly on a covered work bench to protect the paint.



INSTALLATION MANUAL

STEP 6 | Remove the factory crash bar using a 15mm socket



STEP 7 | Use a 18mm socket to remove the factory recovery hooks.



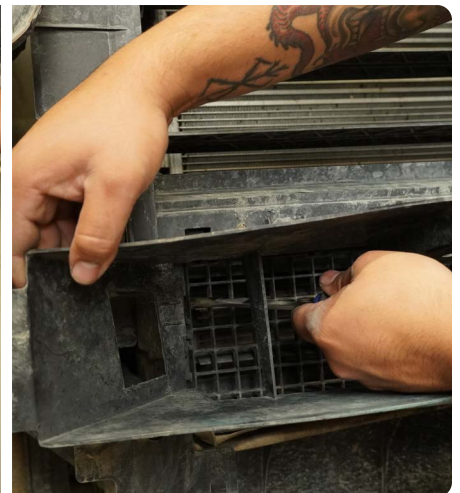
INSTALLATION MANUAL

STEP 8 | Use a 10mm socket to remove the lower bumper support brackets.



STEP 9 | Use a trim clip tool to remove the clips that secure the lower shutter air scoop to the vehicle.

Set the air scoop off to the side. The air scoop will not be reinstalled.





STEP 10 | Disconnect the electrical plug under the hood release.



STEP 11 | Use a 10mm socket to remove the (8) factory bolts that secure the upper radiator shutter assembly to the vehicle.



INSTALLATION **MANUAL**

STEP 12 | Disconnect the electrical harness to right of the upper shutter assembly.

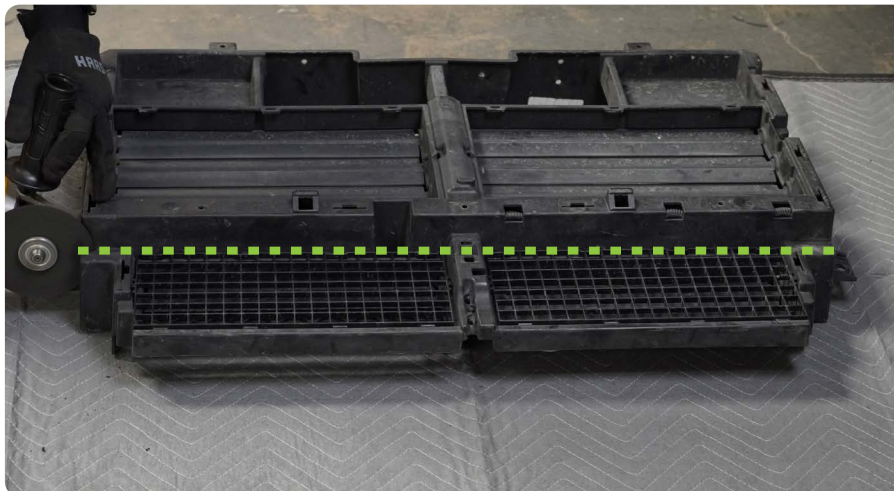
Remove the upper radiator shutter assembly.



INSTALLATION MANUAL

STEP 13 | Cut the lower mesh section from the upper radiator shutter assembly.

Reinstall the shutter assembly back on to the vehicle using the factory hardware.



INSTALLATION MANUAL

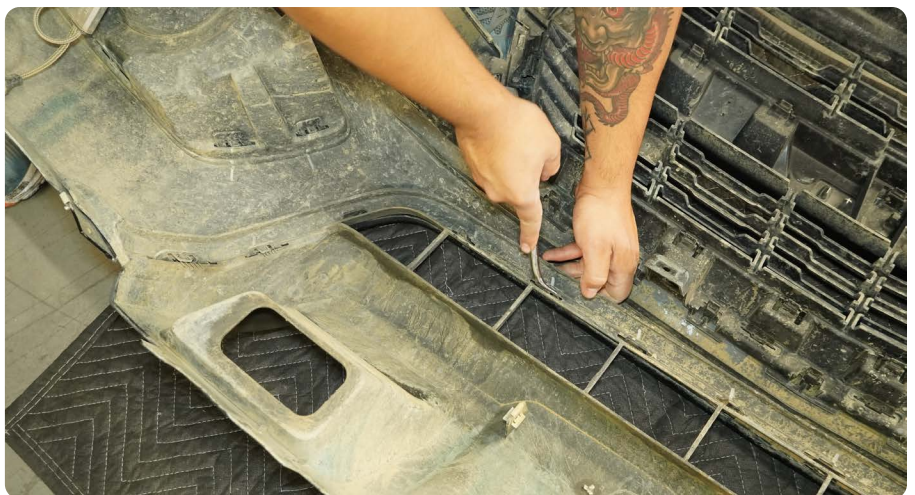
STEP 14 | Secure the lower sensor to the shutter assembly using a zip tie.



STEP 15 | With the bumper/grille on a covered work area face down, unclip the factory clips that secures the bumpers center section.

The bumper center section will not be used.

No trimming is necessary.



INSTALLATION MANUAL

STEP 16 | Place the DV8 Centric bumper on a covered worked bench.

If you are planning to run a light bar, mount the provided light bar brackets on to the light bar using the hardware provided with the light bar.



STEP 17 | Mount the light bar onto the bumper as shown. Use the provided M6 allen head hardware to secure the light bar to the.

For this install we chose the DV8 20" LED Light bar.





STEP 18 | If you are planning on running pod lights we, install the lights now using the hardware provided with the light.

For this install we chose the DV8 3" Elite Pod lights (amber).

TECH TIP: *If planning to run a winch and pod lights, we recommend running a winch with a built in remote receiver.*



INSTALLATION MANUAL

STEP 19 | If planning to run a winch, install your chosen fair-lead at this time, using the hardware provided with the fair-lead.

For this install we picture the DV8 Pocket fair-lead for synthetic rope winches (WBPF-01).



STEP 20 | If planning to run a winch, install the winch now.

For this install our customer chose not to run a winch, Pictured is the DV8 12 LBS Winch (WB12SR).



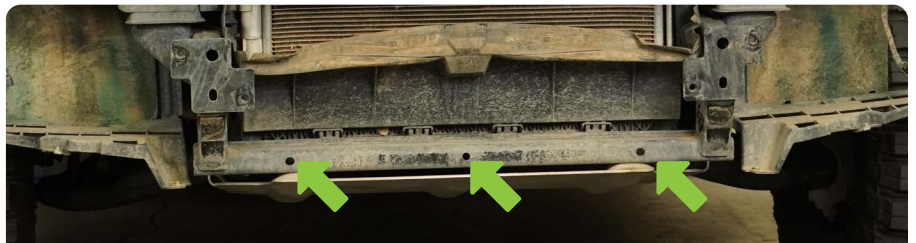
STEP 21 | Lift the bumper up to the vehicles frame rails. Using the factory crash-bar hardware, loosely secure the bumper to the frame rails.

Center the bumper with the hood release latch, and secure the bumper in place using a 15mm socket.



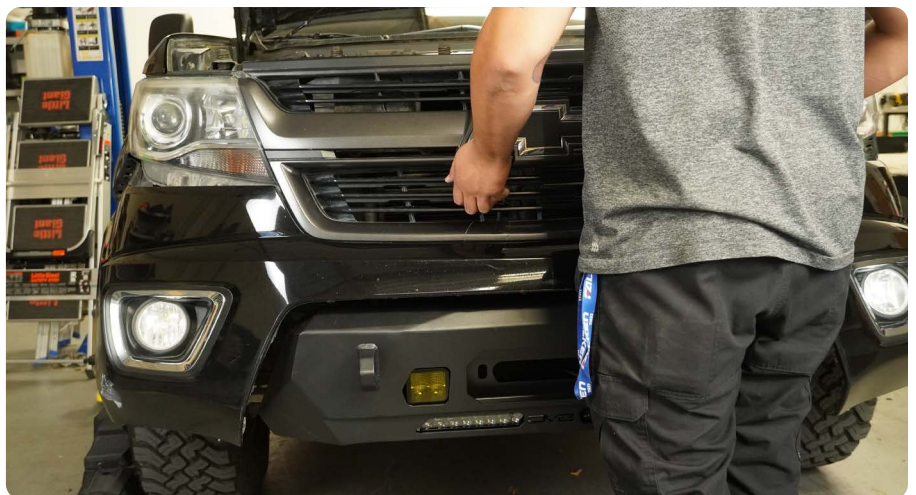


STEP 22 | Use the provided M8 Nut plates and the provided M8 hardware to secure the winch plate to the vehicles bottom radiator support bar.



STEP 23 | Reinstall the factory bumper/grille assembly onto the vehicle. Ensure all clips are clicked back into place.

Secure the bumper/grille assembly to the vehicle in the reverse order it was removed.



INSTALLATION MANUAL

STEP 24 | Double check that the shutter assembly is reconnected, the fog lights are reconnected and that all hardware is secure.

Congratulations, installation of the DV8 Centric bumper is now complete.

