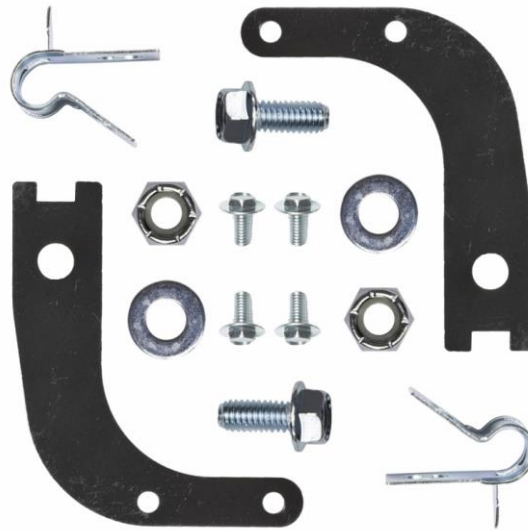




**Detroit Speed**  
**Brake Hose Bracket Kit**  
**1973-87 C10 Truck**  
**P/N: 050402**

The Detroit Speed Brake Hose Bracket Kit ensures proper brake hose routing and retention from the DSE C10 forged aluminum drop spindle and late model truck brake packages. This kit will relocate the intermediate front disc brake hose mount from its original location on the upper control arm to the spindle. The kit includes brackets, hose clamps and the required hardware.



Item	Description	Quantity
1	Brake Hose Bracket	2
2	3/8" R Style Single Brake Line Clip	2
3	M5-0.8 x 10 Flanged Hex Head Bolt	4
4	5/16"-18 x 3/4"L Flanged Hex Head Bolt	2
5	5/16"-18 Nylock Nut	2
6	5/16" SAE Washer	2
7	Instructions	1

***IMPORTANT:***

All work should be performed by a qualified technician. Please read the entire set of instructions and fully understand all of the steps involved before beginning the project. Always make sure to wear the appropriate safety equipment for the job and properly support the vehicle. If you have any questions before, during, or after the installation, feel free to contact Detroit Speed by phone at (704) 662-3272 or by email at [tech@detroitsspeed.com](mailto:tech@detroitsspeed.com).

**NOTE:** Recommended brake hose to be used with this kit:

- Brake Hose (RF) - Raybestos BH 38065
- Brake Hose (LF) - Raybestos BH 38066

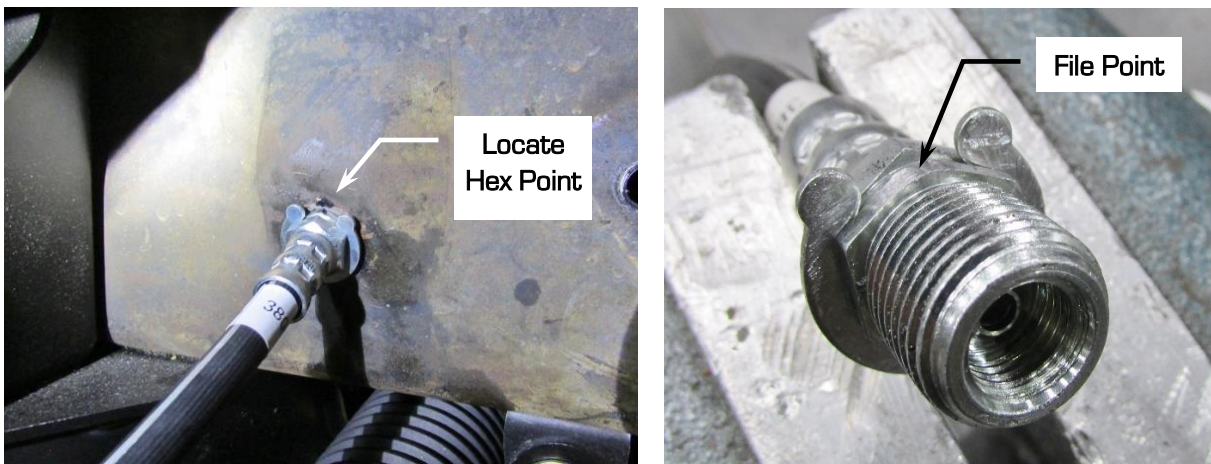
**Installation:**

1. Before the brake hoses can be installed, you will need to remove the factory brake hose clamp. Pry the clamp apart and remove it from the hose (Figure 1).



**Figure 1 – Remove Hose Clamp**

2. Loosely install the caliper bolt through the brake hose and into the caliper. Route the brake hose to the brake line opening in the frame rail. Mark the brake hose fitting where you will need to file off one of the hex points so it will fit into the opening in the frame rail (Figure 2).



**Figure 2 – File Hose Fitting**

3. Once the hose fitting will fit into the frame rail, install the brake hose to the brake line and the caliper (Figure 3).



**Figure 3 – Install Hose**

4. Place one of the brake hose brackets to the top of the DSE drop spindle so the bracket wraps around the back side of the upper ball joint. Install the bracket to the spindle using two of the provided M5-0.8 x 10 flanged bolts. Use medium strength blue Loctite 242 on the threads of the bolts and tighten (Figure 4).



Figure 4 - Install Bracket

5. Place one of the provided 3/8" R style brake line clip around the brake hose. Locate the clip so it will line up with the brake hose bracket. Install the provided 5/16"-18 x 3/4"L flanged bolt through the R clip and bracket. Use the provided 5/16"-18 Nylock nut and washer on the threads of the bolt and tighten (Figure 5). **NOTE:** Make sure the tab on the R clip fits into the square shaped notch on the bracket.

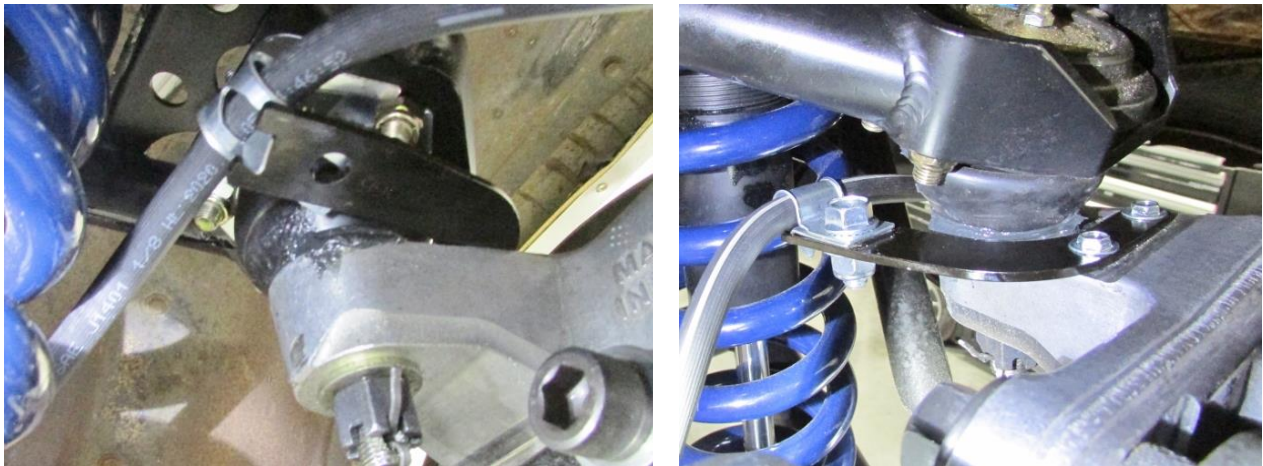


Figure 5 - Install Clip

6. Repeat this process for the other side of the vehicle.

If you have any questions before or during the installation of this product, please contact Detroit Speed at [tech@detroitsspeed.com](mailto:tech@detroitsspeed.com) or 704.662.3272

**Legal Disclaimer:** Detroit Speed is not liable for personal, property, legal, or financial damages from the use or misuse of any product we sell. The purchaser is solely responsible for the safety and performance of these products. No warranty is expressed or implied.