



**ROCK HARD 4X4 JEEP WRANGLER JL
2018-CURRENT WINCH PLATE FOR
OEM PLASTIC/STEEL FRONT BUMPER
PART #: RH-90205 RH-90206
Installation Manual**



Customer Service / Tech Support: sales@rockhard4x4.com
Thank you for your purchase! Please read all instructions carefully prior to
beginning installation of your Rock Hard 4x4 product.

PACKING LIST:

RH-90205 (PLASTIC BUMPER)

- 1 - WINCH PLATE**
- 2 - FRAME MOUNTING ARMS**
- 4 - 1/2" X 1-1/2" BUTTON HEAD BOLTS WITH NYLOCK NUTS**
- 2 - 10MM X 35 BOLTS**

RH-90206 (STEEL BUMPER)

- 1 - WINCH PLATE**
- 2 - LOWER MOUNTING ARMS**
- 1 - FAIRLEAD FILLER PLATE**
- 2 - 3/16" THICK X 1.5 OD WASHERS**
- 2 - 7/16" X 1-3/4" BOLTS**
- 2 - 7/16" NUTS**
- 2 - 7/16" X 1" FLANGE BOLTS**
- 2 - SPACER PLATES (2 SLOTS)**

REQUIRED TOOLS:

RH-90205 (PLASTIC BUMPER)

- FLAT HEAD SCREWDRIVER**
- 16MM WRENCH**
- 3/4" WRENCH**
- 5/16" ALLEN WRENCH**
- 17MM WRENCH**

RH-90206 (STEEL BUMPER)

- 13MM SOCKET**
- FLAT HEAD SCREWDRIVER**
- 18MM SOCKET**
- 45 TORX**
- 16MM WRENCH**
- 5/18" WRENCH**
- 11/16" WRENCH**
- ASSISTANT TO HOLD WINCH DURING INSTALL**

Customer Service / Tech Support: sales@rockhard4x4.com

Thank you for your purchase! Please read all instructions carefully prior to beginning installation of your Rock Hard 4x4 product.

Thank you for your purchase! Whether you bought this Rock Hard 4x4 product from one of our fantastic dealers or our factory direct team, we thank you for your business.

Rock Hard 4x4 is a family owned and operated business. We are headquartered in Saint Paul, Nebraska where we design, fabricate, and produce every single one of our products. Every single part we manufacture is 100% Made in the USA and exclusively in house by the Rock Hard 4x4 team.

We outsource zero processes.

To you, that means the product you are installing is the highest quality and longest lasting component on the market.

To us, that means you've selected a part we've spent years developing. Each Rock Hard 4x4 part has gone through more research and development and evolution than most people realize. While our parts may have the same striking look year after year, subtle revisions and refinements we implement maintain their status as the most durable and easy to install on the market.

We invite you to send us your feedback! Please email, call, write, or catch us on an off road trail near you to share your tales, share comments, and ask questions.

Phone: 844-762-5427

Fax: 308-754-5201

Email: sales@rockhard4x4.com

Site: www.rockhard4x4.com

Mail: ROCK HARD 4X4

PO BOX 186

Saint Paul, NE 68873

Customer Service / Tech Support: sales@rockhard4x4.com

Thank you for your purchase! Please read all instructions carefully prior to beginning installation of your Rock Hard 4x4 product.

PLASTIC BUMPER

1. Remove upper valence by unscrewing two plastic body plugs. Discard.
2. Remove lower air dam by unclipping 8 plastic body plugs along front/bottom side of bumper.
3. Remove factory bolt from inside of frame rails with 16MM wrench and install winch plate support arms using 10MM bolt provided. Brackets face inwards and lean slightly backwards towards grille. Leave bolts loose until winch plate is installed to brackets.



4. Install winch onto winch plate using mounting bolts provided with your winch. Install fairlead.

Customer Service / Tech Support: sales@rockhard4x4.com

Thank you for your purchase! Please read all instructions carefully prior to beginning installation of your Rock Hard 4x4 product.

5. Install winch plate onto mounting brackets with 4x ½” button head bolts and nylock nuts. Nuts on bottom of winch plate. This photo is for installation aide only, remember your winch will already be installed onto plate at this point. Once winch plate is installed onto brackets, tighten hardware from underneath. Reinstall air dam if applicable.

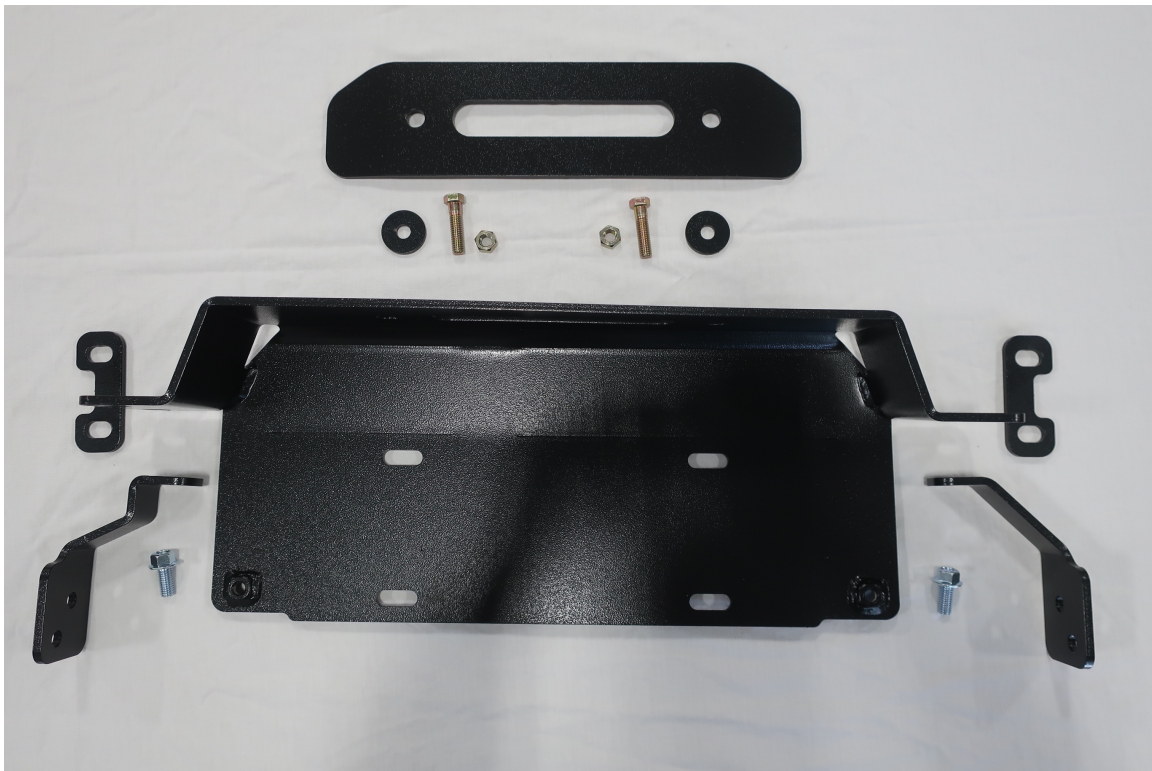


Customer Service / Tech Support: sales@rockhard4x4.com
Thank you for your purchase! Please read all instructions carefully prior to beginning installation of your Rock Hard 4x4 product.

STEEL BUMPER

FITMENT NOTE: This is a TIGHT fit. The JL/JT front grille has more curve to it than any other Wrangler grille prior. We tested the Warn Zeon and Warn VR Series winches and they clear, but it's very close. Because some Jeep bodies are actually installed further forward on the frame than others, your individual install may vary. You may or may not have to trim your frame horns to clear your winch chassis.

WINCH PLATE NOTE: There is a designed 11-degree forward tilt to tray. This is normal.



Customer Service / Tech Support: sales@rockhard4x4.com
Thank you for your purchase! Please read all instructions carefully prior to beginning installation of your Rock Hard 4x4 product.

1. Remove OEM front bumper air dam using 13MM socket. 7 bolts.
2. Remove upper trim plate. 1 snap fastener on each side of frame rail to pop off with a flat blade screwdriver. This will not be reinstalled. Once removed, disconnect fog light harness.
3. Remove front bumper and tow hooks using 18MM socket, remove 8 nuts (4 per side).
4. Remove bumper fascia cover bolts using #45 Torx. 5 bolts.
5. If you want you can remove nut clips from upper bumper cover at this time and reinstall into bumper to reinstall bolts and fill in holes. All but 2 reinstall.
6. Remove inner frame horn braces with 16MM wrench.
7. Bolt winch plate into bumper using fairlead holes with 2x 7/16 x 1-3/4" bolts, 2x 3/16" x 1.5" OD washers and 2x 7/16" nuts. Washers install between bumper and winch plate.

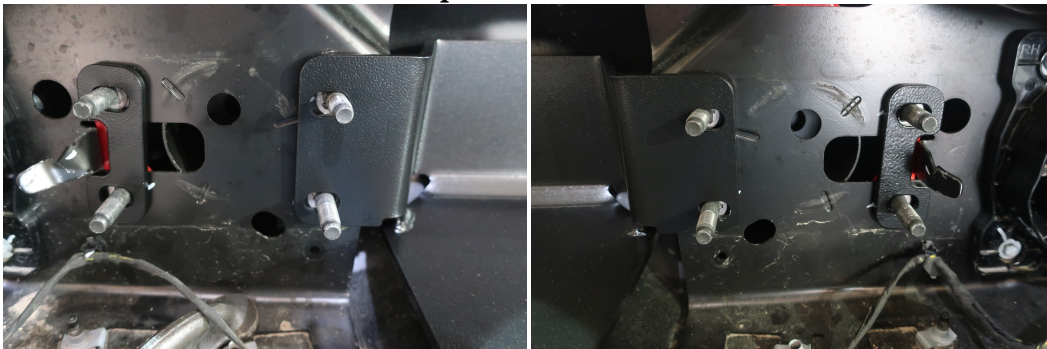


Customer Service / Tech Support: sales@rockhard4x4.com
Thank you for your purchase! Please read all instructions carefully prior to beginning installation of your Rock Hard 4x4 product.

8. Tighten fairlead plate and fairlead with 5/8" wrench and 11/16" wrench.



9. Place 2x2 hole spacer plates on outer bumper bolts on backside of bumper.



Customer Service / Tech Support: sales@rockhard4x4.com
Thank you for your purchase! Please read all instructions carefully prior to beginning installation of your Rock Hard 4x4 product.

10. Have assistant hold winch in place between frame rails while you install bumper back onto frame horns.



11. Install and tighten 8 nuts onto bumper bolts behind frame horns using 18MM socket.
12. Install 4x winch mounting bolts (in your winch hardware) through winch plate into winch.

Customer Service / Tech Support: sales@rockhard4x4.com
Thank you for your purchase! Please read all instructions carefully prior to beginning installation of your Rock Hard 4x4 product.

13. Remove 2 factory bolts from inner frame rails per side. (If you had a plastic front bumper and are converting to a JL steel front bumper, you won't have these). Install Rock Hard 4x4 support braces using factory hardware. Install 2x 7/16" x 1" flange bolts from bottom up into winch tray, 1 per side of winch tray, into welded nuts.



14. Reconnect fog lights.
15. Reinstall skid plate.

Customer Service / Tech Support: sales@rockhard4x4.com
Thank you for your purchase! Please read all instructions carefully prior to beginning installation of your Rock Hard 4x4 product.

Rock Hard 4x4 Exclusive Limited Lifetime Warranty

Your Rock Hard 4x4® branded accessories are covered by the following Limited Warranty provided exclusively by Rock Hard 4x4., 1005 Twin Forks Lane, St. Paul, NE 68873.

This Limited Warranty is the only warranty made in connection with your purchase. Rock Hard 4x4 neither assumes nor authorizes any vendor, retailer or other person or entity to assume for it any other obligation or liability in connection with this product or Limited Warranty.

What is Covered: Subject to the terms, exclusions and limitations herein and with respect only to Rock Hard 4x4 branded accessories first sold in the United States, Rock Hard 4x4 warrants to the initial retail purchaser only that your Rock Hard 4x4 accessory shall be free of defects in material and workmanship for the lifetime of this product.

Rock Hard 4x4 reserves the rights to: (a.) require invoice or other proof your accessory is within the terms of this Limited Warranty as a condition of warranty service and, (b.) make future revisions to this product and Limited Warranty without prior notice or obligation to upgrade your product.

What is Not Covered: *Your Rock Hard 4x4 Limited Warranty does not cover products or parts Rock Hard 4x4 determines to have been damaged by or subjected to:*

(a.) Installation damage, alteration, modification, combination with other parts, failure to maintain or improper repair or service, (b.) normal wear & tear, cosmetic damage or damage from moisture or water immersion, (c.) Acts of God, accidents, misuse, negligence, inadequate mounting or impact with vehicle(s), obstacles or other aspects of the environment, (d.) theft, vandalism or other intentional damage. (e.) powder coat, anodizing, or paint finish.

Remedy Limited to Repair/Replacement: *The exclusive remedy provided hereunder shall, upon Rock Hard 4x4 inspection and at Rock Hard 4x4's option, be either repair or replacement of product or parts (new or refurbished) covered under this Limited Warranty. Customers requesting warranty consideration should first contact Rock Hard 4x4 to obtain a RGA number (308-750-4690). All labor, removal, shipping and installation costs are customer's responsibility.*

Your Rights Under State Law: *In consideration of the purchase price paid, neither Rock Hard 4x4 nor any independent Rock Hard 4x4 distributor/licensee are responsible for any time loss, rental costs, or for any incidental, consequential, punitive or other damages you may have or incur in connection with any part or product purchased.*

Customer Service / Tech Support: sales@rockhard4x4.com

Thank you for your purchase! Please read all instructions carefully prior to beginning installation of your Rock Hard 4x4 product.