

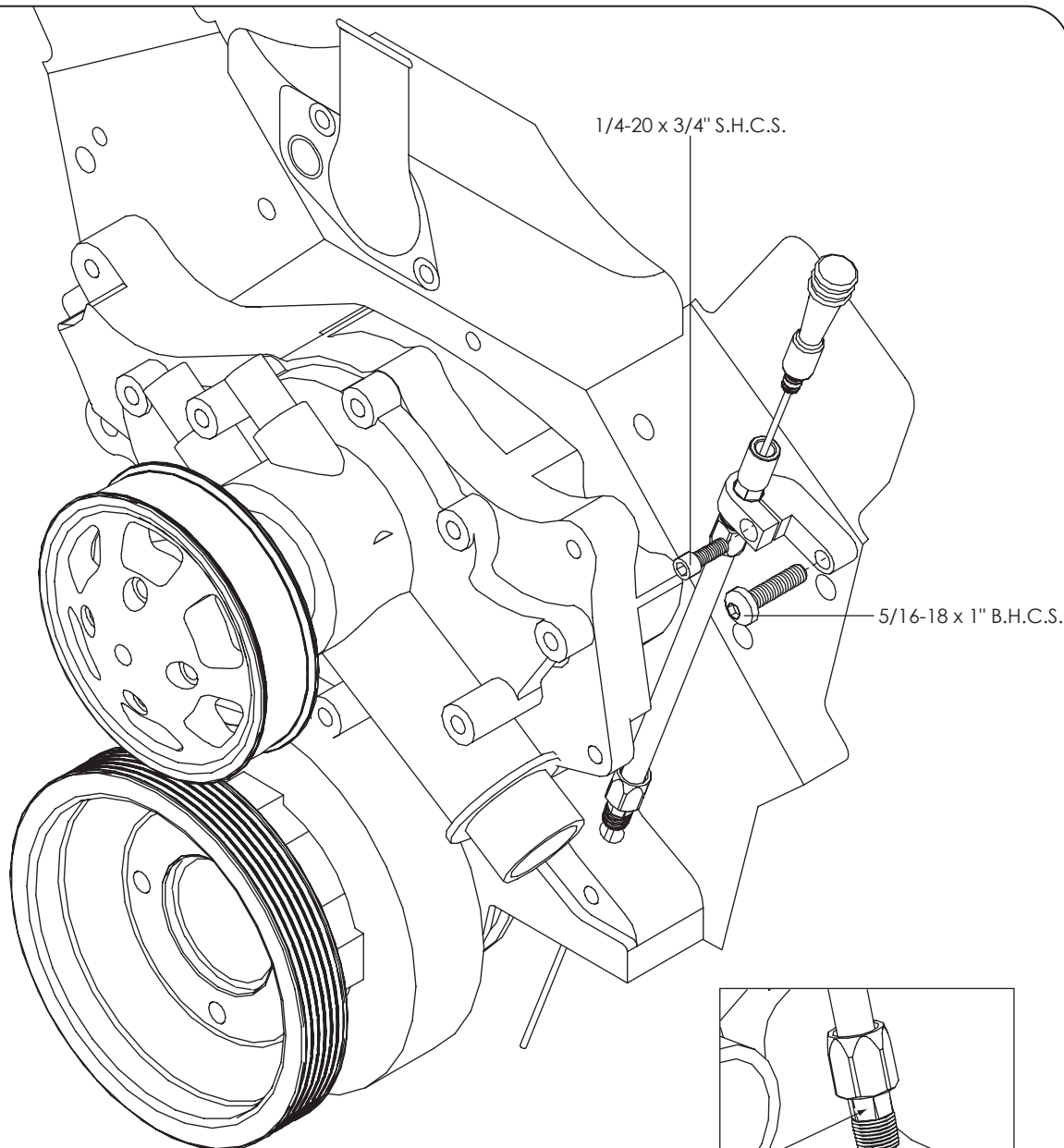


## #40150 SB Ford Tru Trac Dipstick For use with SB Ford Tru Trac Systems Only

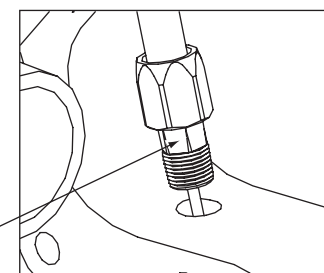
### Required Tools:

3/16" Allen Wrench  
3/8" Open End Wrench  
Loctite #37545 Thread sealant with PTFE

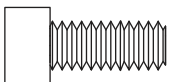
- 1) Disconnect battery and remove alternator if Tru Trac is already assembled on motor.
- 2) Remove brass plug from Tru Trac timing cover with a 3/16" allen wrench.
- 3) Apply Loctite® thread sealant with PTFE #37545 to threads.
- 4) Thread tube assembly into the timing cover and tighten with a 3/8" open-end wrench. **Do Not Over-Tighten!** This is a tapered thread and may cause damage to the dipstick or timing cover. Only tighten at the base of the dipstick. See detail drawing; the compression nut above is preassembled and should not be turned or damage may occur to dipstick tube.
- 5) Slide upper bracket over top of dipstick tube and align assembly with mount hole in cylinder head. Thread the 5/16-18 x 1" button head cap screw through the bracket and into the cylinder head and tighten firmly with a 3/16" allen wrench. Tighten the 1/4-20 x 3/4" socket head cap screw in bracket with a 3/16" allen wrench.
- 6) Insert dipstick into tube. Remove to check oil level and verify full mark on dipstick.
- 7) Install alternator and reconnect battery. Start motor and test run.



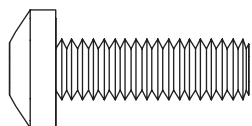
Use 3/8" open-end wrench here **ONLY**.  
Note: Tightening compression nut  
will result in damage to dipstick tube.



Detail Drawing



1/4-20 x 3/4" Socket Head Cap Screw (x1)



5/16-18 x 1" Button Head Cap Screw (x1)

