



**INSTALLATION INSTRUCTIONS FOR 2005-2023
TOYOTA TACOMA 4 X 4 AND PRERUNNER, 2003-2024
4RUNNER, 2007-2014 FJ CRUISER
FRONT LEVELING KIT
PART #52015**

WARNING!!! READ AND UNDERSTAND ALL INSTRUCTIONS BEFORE PROCEEDING. MAKE SURE THAT YOU HAVE ALL TOOLS AND PARTS BEFORE BEGINNING THE INSTALLATION.

SPECIAL TOOLS REQUIRED:

FACTORY CERTIFIED SPRING COMPRESSOR
TIE ROD END PULLER

TUFF COUNTRY EZ-RIDE SUSPENSION RECOMMENDS THAT RED LOCTITE BE USED ON ALL FASTENERS UNLESS OTHERWISE NOTED. IT IS ALSO RECOMMENDED TO HAVE THE FRONT END ALIGNMENT CHECKED AFTER INSTALLATION.

KIT CONTENTS INCLUDE:

- Instructions including parts list
- Product Safety Label
- Warranty
- Differential Spacer Kit (see page 4 of instructions)

TORQUE SPECIFICATIONS

8MM FASTENERS	17 LBS.
10MM FASTENERS	30 LBS.
12MM FASTENERS	55 LBS.
9/16" U-BOLT	75 LBS.
LUG NUTS	75 LBS.

PARTS LIST INCLUDED IN KIT

<u>FRONT</u>	<u>QTY.</u>
PRELOAD SPACER	2
<u>DIFFERENTIAL SPACER KIT</u>	
DIFFERENTIAL DROP SPACERS	2
1/2 – 13 X 6 GRADE 5 HEX BOLT (ZINC)	2
½ - 13 NYLOCK NUT (ZINC)	2
M8 X 1.25 X 35MM HEX BOLT (ZINC)	4
SKID PAN SPACERS	6
M8 FLAT WASHERS (ZINC)	4

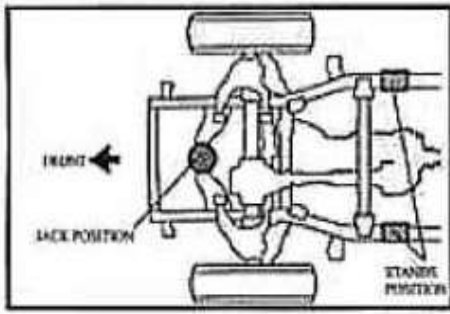


FIG "A."



FIG "C."



FIG "B."



FIG "D."

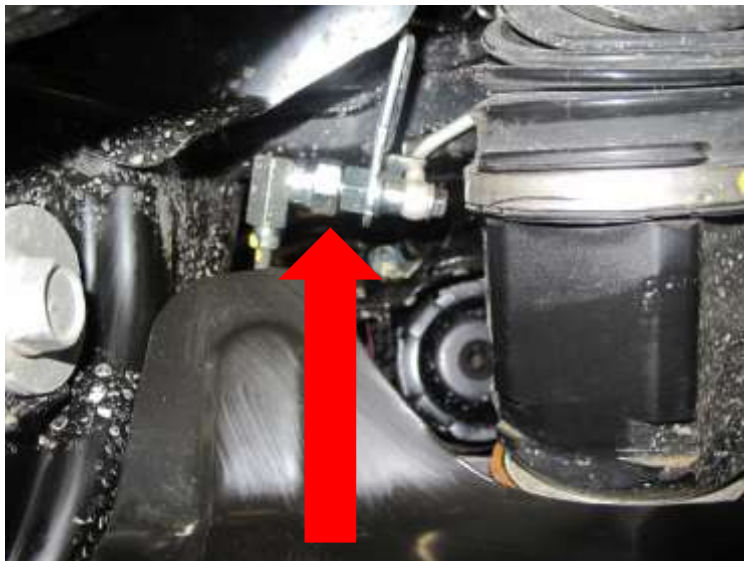


FIG "E"

FRONT OF VEHICLE

1. Park vehicle on level surface.
2. Center and lock the steering wheel.
3. Block the rear wheels of the vehicle to prevent vehicle from moving in either direction.
4. Jack up the vehicle from the lift point in Figure "A."
5. Support the vehicle with jack stands from the points in Figure "A."
6. Remove the front wheels.
7. Remove the nut (19mm) and bolt from the bottom of the strut.
8. Remove sway bar from frame using 14mm socket. (See Figure C). For vehicles equipped with the KDSS system it is recommended to "strap" the solenoids tight before continuing.³
9. Remove cotter key and 19mm nut from outer tie rod end, separate the rack & pinion tie rod ends utilizing a tie rod end puller.
10. Be sure to remove and secure the ABS and brake lines to avoid damage.
11. Loosen upper ball joint nut. Leave partially on to separate ball joint. Then remove nut and separate spindle from joint.
12. **FOR VEHICLES WITH X-REAS:** Disconnect the XREAS hydraulic line just rear of the shock on the frame (See Figure E.) Be sure you remove the disconnect point and not the banjo bolt. You may see a few drops of fluid this is normal.
13. Remove the three nuts (14mm) from the top of the strut. See Figure "B."
14. With a marking pen, mark the center of the strut facing toward you, where the spring connects to the top plate and the lower plate so that they line back up on re-assembly. See Figure "C."
15. Remove the strut from the vehicle, it will be necessary to separate outer tie rod end from knuckle, and remove front sway bar for more clearance when removing the strut.

NOTE: AT THIS TIME, IF YOU DO NOT HAVE A SUITABLE SPRING COMPRESSOR, IT IS HIGHLY ADVISED TO TAKE THE STRUT TO A QUALIFIED SERVICE CENTER.

16. Compress strut assembly and remove the nut (17mm) on the top of the strut shaft.
17. Release the compressor.
18. Remove the spring top plate from the strut.
19. Remove and discard the rubber spacer. See Figure "D."
20. Install the PRELOAD SPACER between the spring and the spring top plate with the small diameter facing toward the coil spring.
21. Compress the strut assembly, making sure you center the strut shaft through the spring top plate hole. Replace nut on the top of the strut shaft and torque to spec. (Torque specs can be found on page 1.)
22. Reinstall the strut by reversing the removal procedure; torque to spec. (Torque specs on page 1.)
23. Reconnect the X-reas hydraulic line.

24. Replace the wheels; torque to spec.

DIFFERENTIAL DROP SPACER KIT

(MANDATORY TO MINIMIZE OR AVOID CV BOOT WEAR ON ALL MODELS)

1. Remove both skid plates under the front of the vehicle. Save the OEM bolts (total of nine (9) 12mm bolts).
2. Remove factory bolts and nuts, supporting the front differential. (See Figure 1). Save the OEM washers for step 3.
3. Install the large spacers between the two front differential supports and front cross-member. Fasten to cross-member using new ½ x 6” long bolts and nuts (making sure to reuse the factory washers). (See Figure 2.)
4. Place 2 small spacers on each side of the rear of the front skid plate between plate and frame. This will allow additional clearance for relocated differential. Use the longer 10MM bolts provided. If vehicle has optional differential skid plate then use one small spacer on each side and a longer bolt here as well.
5. Install the FRONT skid plate using three (3) OEM bolts on the front and two (2) new M8 x 35mm bolts in the rear with the small tos-8 aluminum spacers between the skid pan and mounting point.
6. Torque all skid plate bolts to specs.



Figure 1



Figure 2

Important Installation Notes:

- Manufacturing tolerances do create certain variations that we cannot fully account for. At times you may need to use a punch, or pry bar to get holes to line up. Also you may need to slightly enlarge a hole to create a proper alignment. These are all normal situations.
- Altering your suspension may change the way your vehicle handles. Care must be taken to operate your vehicle safely.
- Adding large wheels and tires, will change how your suspension operates. It may put extra strain on certain components causing them to wear sooner than normal.
- While every effort is made to design our kits to work within factory geometry, there are situations where additional alignment tools like adjustable or replacement components may be needed. This is normal.
- It is possible when changing the driveline angles that a vibration may occur, and require an adjustment to repair this situation.
- Other modifications may be needed due to optional equipment on the vehicle or other prior modifications that have been made.
- All fasteners should be checked and retightened after 500 miles. After the initial recheck, they should be checked and tightened as needed with every following service.
- Once the installation is complete a thorough road test should be performed to verify proper clearance of all items.
- Tuff Country Ez-ride Suspension kits are not designed for race applications.
- Altering the suspension on your vehicle may change the characteristics of some systems such as: fuel economy, transmission shift points, etc.
- While Tuff Country Ez-ride systems are designed to work within all factory specifications and tolerances, there are some situations where exceeding the capability of the vehicle such as load capacity or speed will result in some undesirable results. If you overload your vehicle it will not handle correctly. If you drive or turn with excessive speed your vehicle will handle differently and some onboard vehicle systems may detect this and take appropriate action.
- Our tire and wheel fitments are only a guideline. Different production times or tolerances will vary and this sizes should only be used as a starting point. Each vehicle is different and will need to be treated as such.
- Our lift heights can vary slightly based on manufacturing tolerances. Some vehicles will exhibit slightly different amounts of lift heights and different final heights. Every vehicle is not identical and every vehicle will not be perfectly the same at all four corners.
- Once your vehicle is lifted components may wear faster, this is normal. A lifted vehicle is exerting more stress on most components and therefor causing them to wear faster.
- After altering the height of your vehicle, you should aim the headlights for proper coverage.
- The use of Loctite on fasteners is highly recommended.

Limited Lifetime Warranty

Notice to all Tuff Country EZ-Ride Suspension customers: It is your responsibility to keep your original sales receipt! If failure should occur on any Tuff Country EZ-Ride Suspension component, your original sales receipt must accompany the warranted unit to receive warranty. Warranty will be void if the customer can not provide the original sales receipt. Do not install a body lift in conjunction with a suspension system. If a body lift is used in conjunction with any Tuff Country EZ-Ride Suspension product, your Tuff Country EZ-Ride Suspension WARRANTY WILL BE VOID. Tuff Country Ez-ride suspension products are warranted to be free from defects in material and workmanship for life if purchased, installed and maintained on a non-commercial vehicle; otherwise, for a period of twelve (12) months, from the date of purchase and installation on a commercial vehicle, or twelve thousand (12,000) miles (which ever occurs first). Tuff Country Ez-ride Suspension does not warrant or make any representations concerning our products when not installed and used strictly in accordance with the manufacturer's instructions for such installation and operation and accordance with good installation and maintenance practices of the automotive industry. This warranty does not apply to the cosmetic finish of

Tuff Country Ez-ride Suspension products nor to Tuff Country Ez-ride Suspension products which have been altered, improperly installed, maintained, used or repaired, or damaged by accident, negligence, misuse or racing. ("Racing is used in its broadest sense, and, for example, without regards to formalities in relation to prizes, competition, etc.) This warranty is void if the product is removed from the original vehicle and re-installed on that or any other vehicle. This warranty is exclusive and is in lieu of any implied warranty of merchantability, fitness for a particular purpose or other warranty of quality, whether express or implied, except the warranty of title. All implied warranties are limited to the duration of this warranty. The remedies set forth in this warranty are exclusive. This warranty excludes all labor charges or other incidental or consequential damages. Any part or product returned for warranty claim must be returned through the dealer of the distributor from whom it was purchased. Tuff Country Ez-ride Suspension reserves the right to examine all parts returned to it for warranty claim to determine whether or not any such part has failed because of defect in material or workmanship. The obligation of Tuff Country Ez-ride Suspension under this warranty shall be limited to repairing, replacing or crediting, at its option, any part or product found to be so defective. Regardless of whether any part is repaired, replaced or credited under this warranty, shipping and/or transportation charges on the return of such product must be prepaid by the customer under this warranty. Important information that needs to be read before installation begins:

This Suspension kit comes with (1) installation manual and some post installation procedure literature and it is the installers responsibility to make sure that the customer receives the post installation procedure literature. If a customer would like a copy of the installation manual, please have them visit our website at www.buytuffcountry.com. Have them go to the customer care section to download these instructions. If you have any questions, please feel free to call us at (801) 280-2777.

Before installation begins, Tuff Country EZ-Ride Suspension highly recommends that the installer performs a test drive on the vehicle. During the test drive, check to see if there are any uncommon sounds or vibrations. If uncommon sounds or vibrations occur on the test drive, uncommon sounds or vibrations will be enhanced once the suspension system has been installed. Tuff Country EZ-Ride Suspension highly recommends notifying the customer prior to installation to inform the customer of these issues if they exist.

Tuff Country Ez-ride Suspension recommends using loctite on all new and OE hardware associated with the installation of this suspension system.