



PERFORMANCE BY  
**INTEGRATED  
ENGINEERING**

## IE CATBACK EXHAUST SYSTEM FOR AUDI B9 S4

PART NUMBER: IEEXCK5

Thank you for purchasing another high-quality Integrated Engineering product! This instruction guide is used for the installation of IE's Audi Catback Exhaust System for your Audi B9 or B9.5 S4. Professional or experienced technician installation is recommended and Integrated Engineering is not responsible for any damage caused by incorrect installation.



## **IEEXCK5 KIT CONTENTS**

- B9 S4 Catback Resonator Section
- B9 S4 Catback Y-Pipe
- B9 S4 Catback Driver Side Rear Section
- B9 S4 Catback Passenger Side Rear Section
- B9 S4 Catback Tip
- T-BOLT CLAMP 2.360"-2.720"
- 2.5" (63.5mm) OEM Style Exhaust Butt Clamp
- Lap Joint Exhaust Band Clamp 65mm x 63.5mm
- Lap Joint Exhaust Band Clamp 63.5mm x 60mm
- 63.5mm x 60mm Exhaust Reducer - Shorty
- Washer for M10 Screw Size, 10.5 mm ID, 19 mm OD

## **REQUIRED TOOLS**

- 13mm Socket and Socket Extension
- #10 triple square
- Lift or Jack and Jack Stands
- Long Flathead Screwdriver, Pry Bar or Exhaust Hanger Press Tool

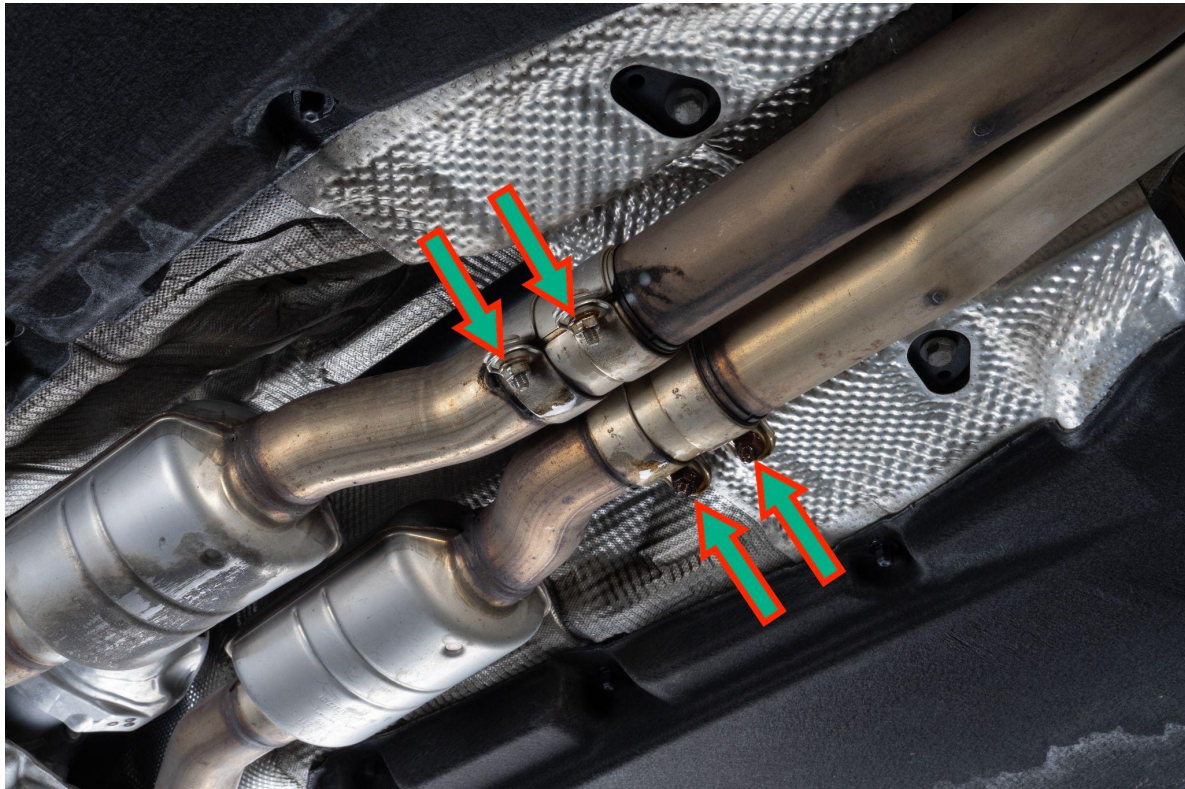
Before you begin, park your vehicle in a safe and level location. Allow plenty of time for the engine bay to completely cool before beginning the installation procedure. Unbox your IE Exhaust Kit to verify the contents and quantities and check for any possible shipping damage. Prepare your work space and locate the required tools listed above before starting.

IE recommends pre-reading the entire installation guide ahead of your install to both prepare yourself for each step and to make sure you don't have any questions before beginning. If you have any questions or need clarification, please contact our helpful support team specialists at [support@performancebyie.com](mailto:support@performancebyie.com)

Make sure the vehicle and exhaust is cold, then raise the vehicle with either a lift or jacks and secure it.

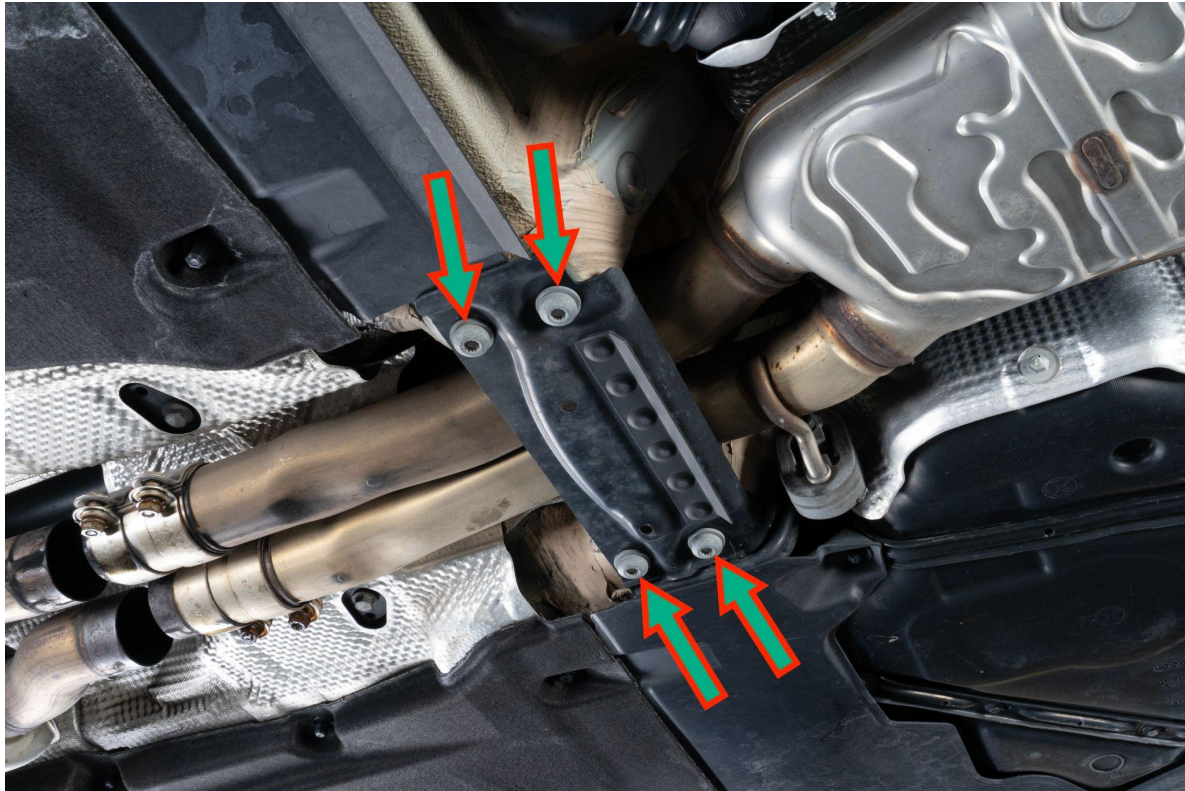


Loosen four 13mm bolts on midpipe to catback exhaust clamps, then slide clamps back onto muffler section





Remove four #10 triple square bolts holding up cross brace

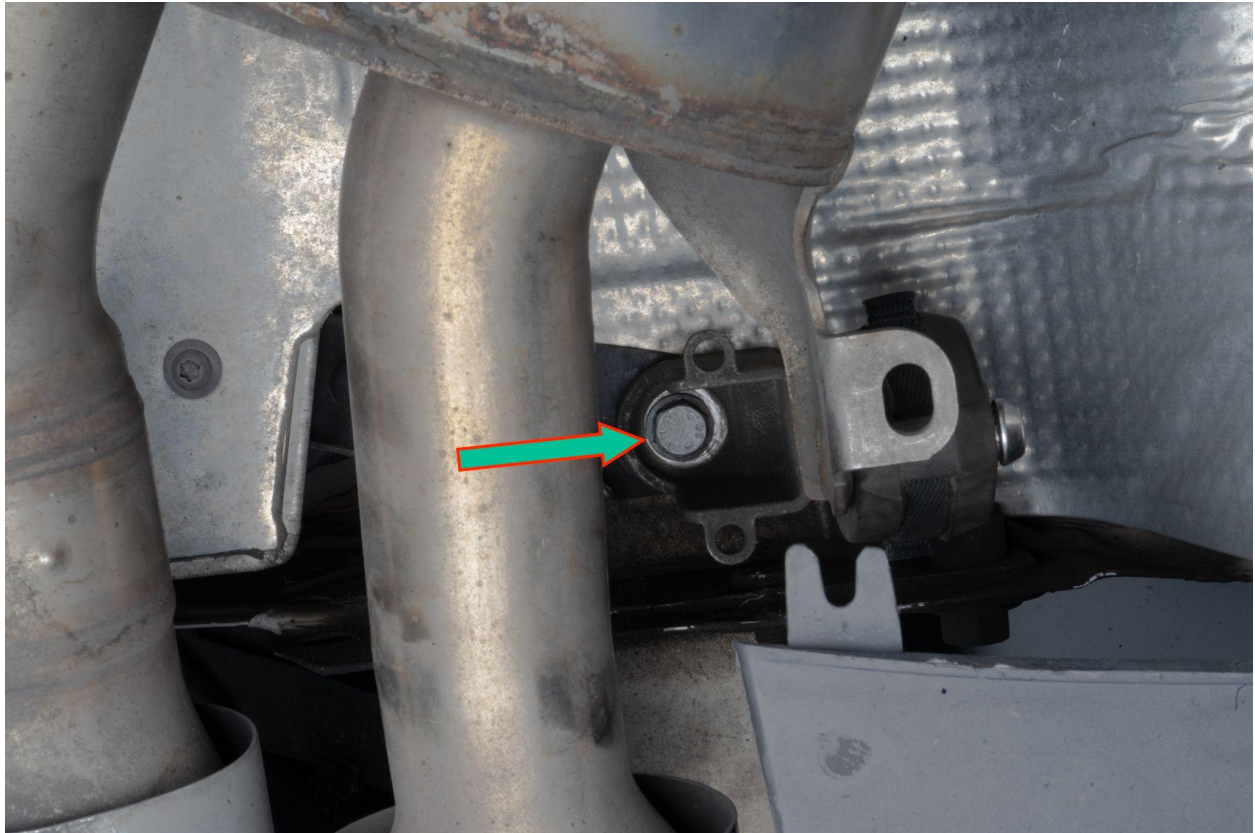


Remove both muffler flap motor connectors (one on each side) by pushing back the gray piece, then pinching down.

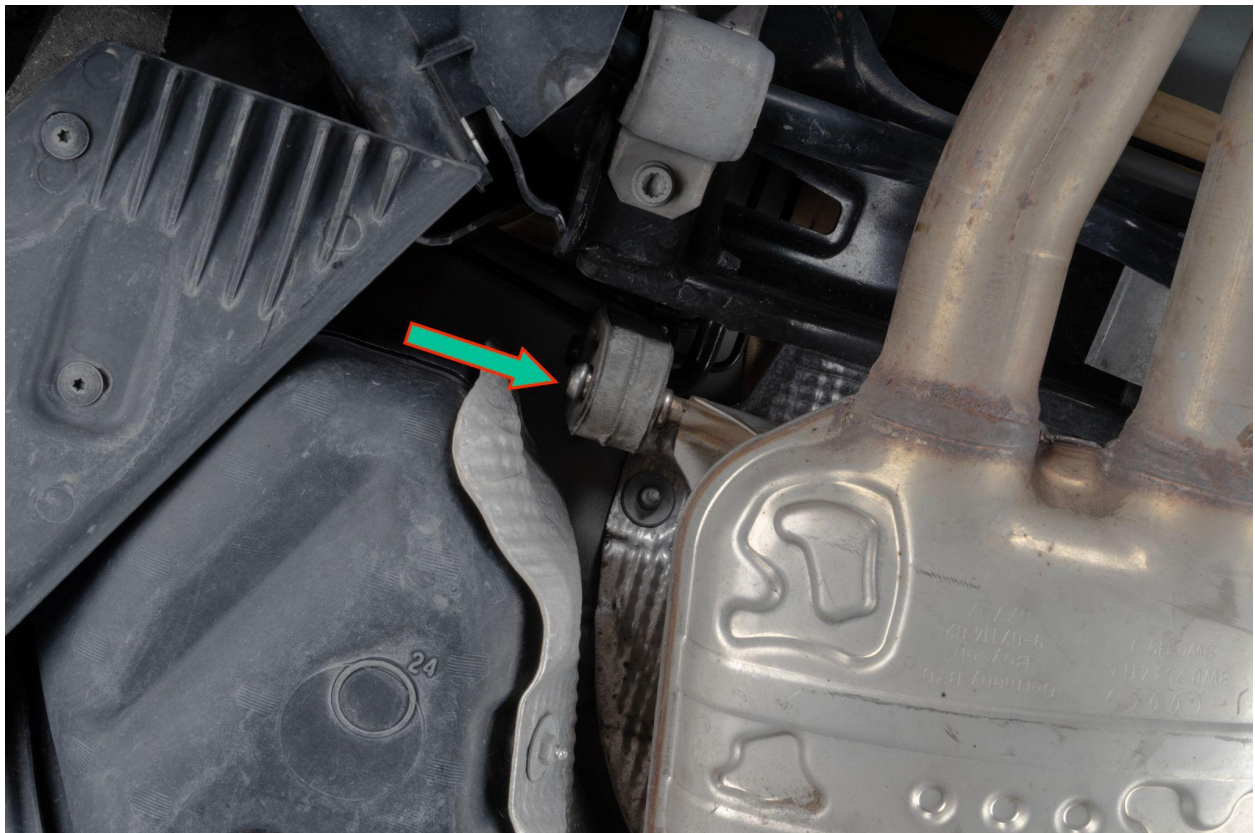




Remove two (one from each side) rear 13mm bolts on muffler hangers



Push out the last exhaust hanger located near the resonator. Be prepared for exhaust to drop from the car. An extra set of hands is helpful here. Then remove the entire rear muffler section from vehicle





Remove factory hangers from the muffler portion.



Reinstall hangers onto IE Exhaust.

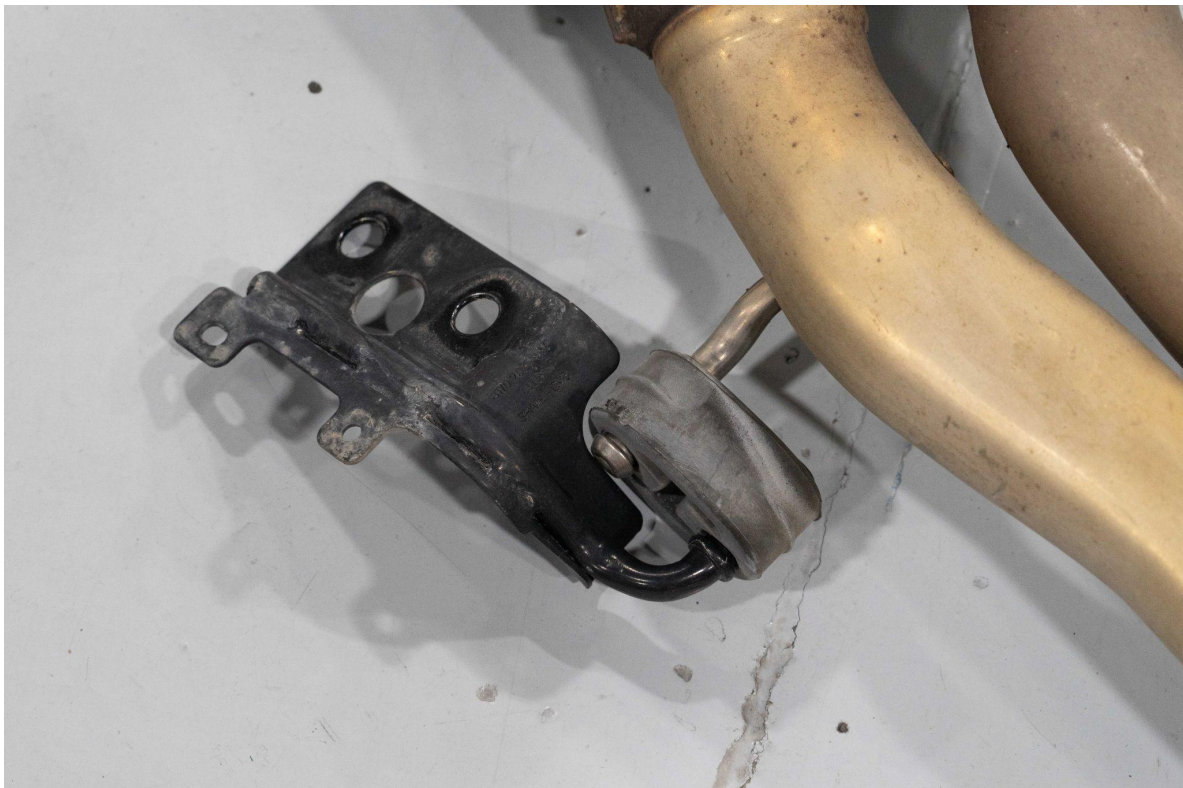




Loosely install tail pipe sections of IE exhaust and fasten to vehicle with the 13mm bolts

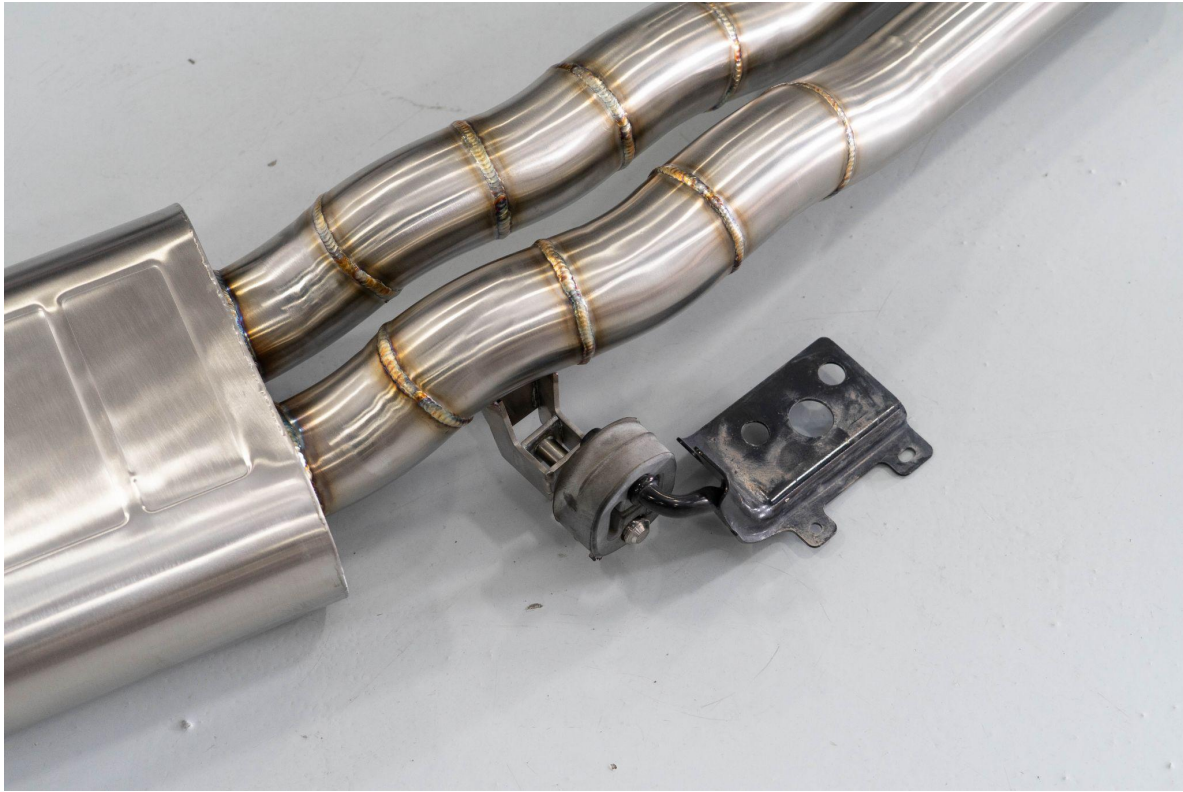


Remove center exhaust hanger in front of resonator





Reinstall onto IE Exhaust



Install 63.5-65 slip fit clamps on front side of middle IE section





Install center portion of IE exhaust on the vehicle



Loosely install middle section of the IE exhaust between muffler and rear sections





Reinstall the center brace

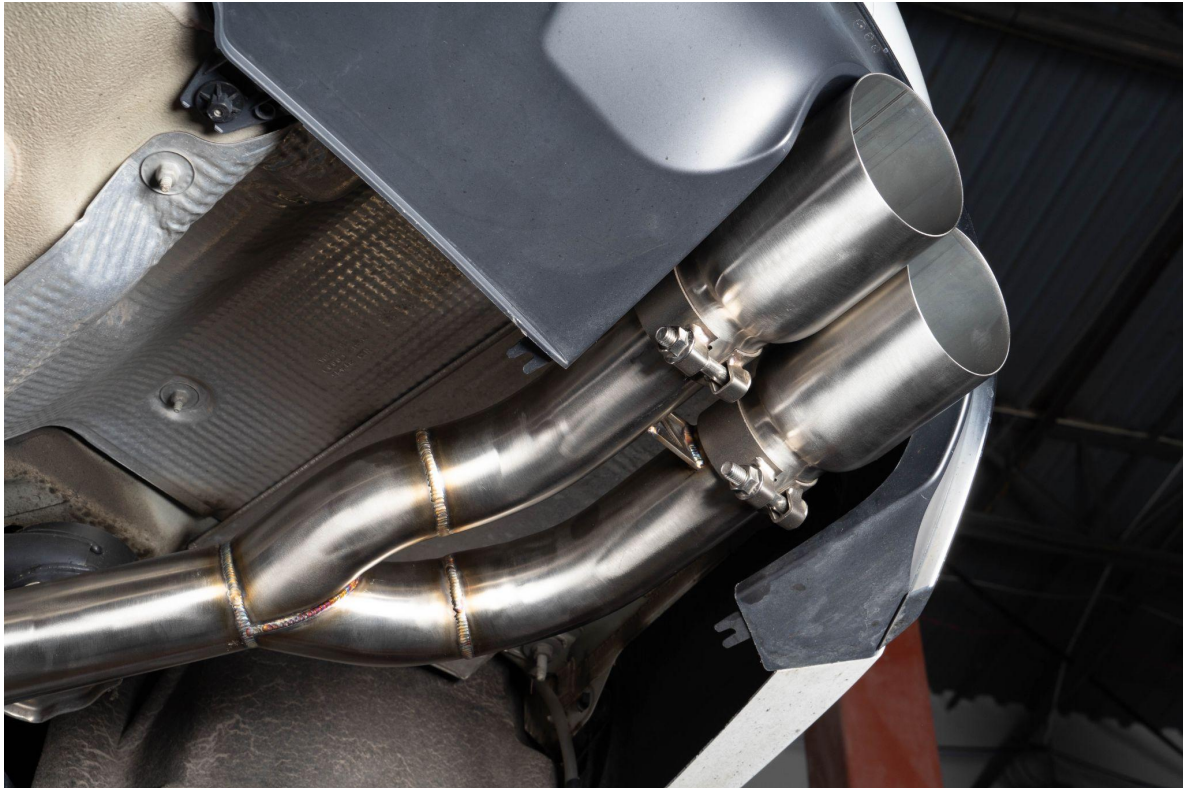


Tighten exhaust clamps starting from the front to the back, take care to align the pipes as you go

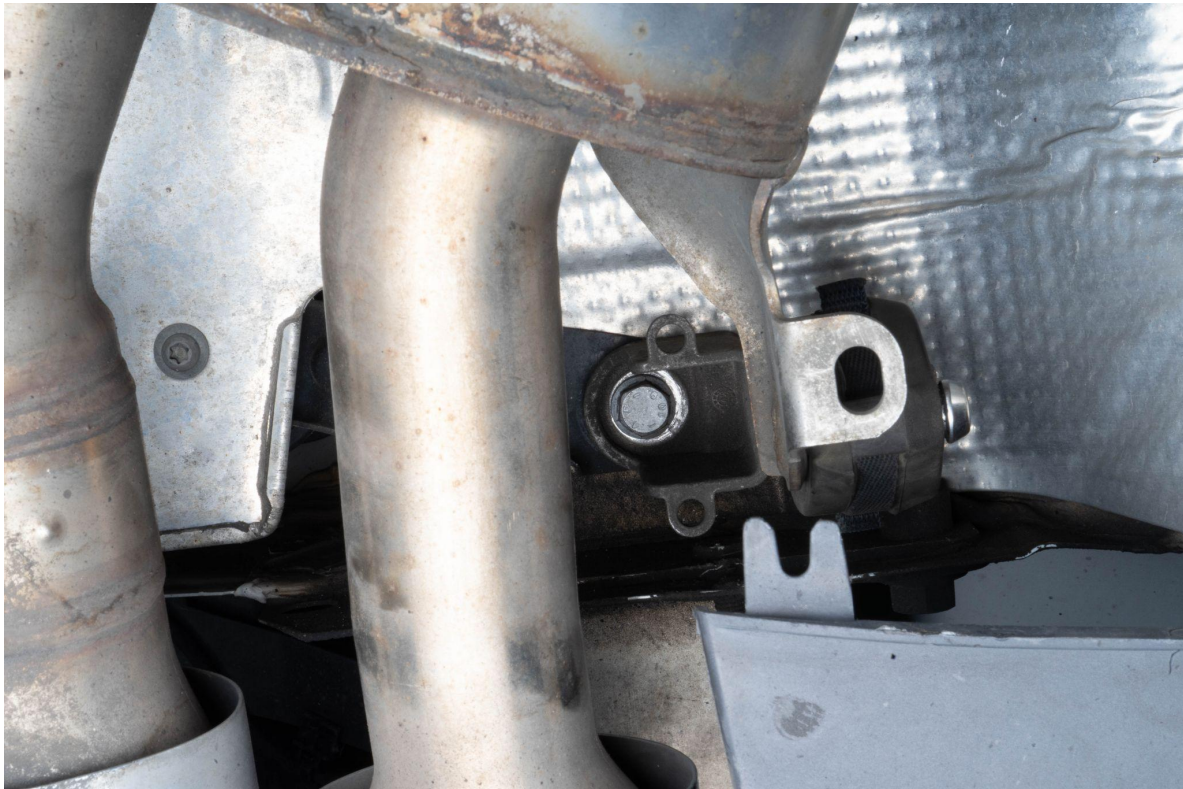




Install exhaust tips on the rear exhaust section.



Tighten rear exhaust hangers while taking care to try and level the tail pipes. Ensure that the tips are not making contact with the rear valence. If they are, loosen the exhaust clamps, reorient, and retighten. This may take a couple of tries to get perfect



Once the exhaust is sitting in the proper orientation, ensure that all clamps and hangers are tight. Enjoy the Looks, Power, and Sound of your new IE Performance Exhaust!



Thank you for purchasing another Integrated Engineering product. We are dedicated to serving your VW/Audi engine and performance needs. Please check our website frequently for new product releases. If you have any questions or concerns about this product, please do not hesitate to contact us.

PERFORMANCE BY



Integrated Engineering  
801.484.2021  
sales@performancebyie.com  
[www.performancebyie.com](http://www.performancebyie.com)