

INSTALLATION INSTRUCTIONS

SUBJECT: Heater Feed and Return Hose Kit for 2003-2012 Cummins

FPE-2025-152
August, 2025
Page 1 of 5

FITMENT: 2003-2012 5.9L and 6.7L Cummins Equipped Dodge Ram 2500/3500 Pickup Trucks

KIT P/N: FPE-CUMM-HCL-KIT-0312

EST INSTALL TIME: 1 Hour

TOOLS REQUIRED: Pliers, 1/4" hex drive or socket, 7/8" deep well socket or wrench

KIT CONTENTS:

Item #	Description	QTY
1	Upper heater core hose (supply)	1
2	Lower heater core hose (return)	1
3	Upper heater core hose riser adapter	1
4	Hose clamp	4
5	Thread sealant	1



PART CROSS-REFERENCE:

Replaces the following part numbers

Mopar 68186700AA, Mopar 55056673AC, Mopar 55056965AA, Gates 19168, Gates 18774, Mopar 55056711AC, Mopar 55056966AA, Gates 23957

WARNINGS:

- Use of this product may void or nullify the vehicle's factory warranty.
- User assumes sole responsibility for the safe & proper use of the vehicle at all times.
- The purchaser and end user releases, indemnifies, discharges, and holds harmless Fleece Performance Engineering, Inc. from any and all claims, damages, causes of action, injuries, or expenses resulting from or relating to the use or installation of this product that is in violation of the terms and conditions on this page, the product disclaimer, and/or the product installation instructions. Fleece Performance Engineering, Inc. will not be liable for any direct, indirect, consequential, exemplary, punitive, statutory, or incidental damages or fines cause by the use or installation of this product.

PROCEDURE:

STEP 1: Disconnect both batteries and drain the coolant into a clean bucket or catch pan.

STEP 2: Locate the upper heater core supply hose in the engine bay located on the (left) passenger side of the engine valve cover. Loosen and remove the hose clamp from the upper heater core hose at the firewall heater core connection.

STEP 3: Disconnect the upper heater core hose from the quick disconnect fitting on the passenger side of the cylinder head by compressing the hose retainers and lifting up on the connection. If necessary, use a flat head screwdriver to pry the hose adapter from the fitting. Remove the upper heater core hose from the engine bay.

STEP 4: Using a 7/8" deep well socket, loosen and remove the OE adapter fitting from the cylinder head.



QUICK REFERENCE

The OE quick disconnect fitting and the Fleece Performance riser fitting both contain a flow control orifice to manage overall coolant flow to the heater core.



TOP VIEW



BOTTOM VIEW

STEP 5: Locate the lower heater core return hose in the engine bay located on the (left) passenger side of the engine on the top of the coolant standpipe. Loosen and remove the hose clamp from the lower hose at the firewall heater core connection and the top of the coolant standpipe.



STEP 6: Disconnect the lower heater core hose from the coolant standpipe and the firewall.



STEP 7: Install the new Fleece Performance heater core return hose. Install the included hose clamps onto the hose. Connect the hose to the lower heater core port on the firewall and the coolant standpipe. Tighten the hose clamps using a 1/4" socket or flathead screwdriver.



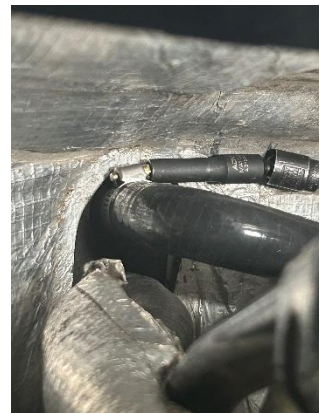
STEP 8: Apply thread sealant in a single bead around the lowest thread of the new heater core hose riser fitting.



STEP 9: Using a 7/8" deep well socket, install the new Fleece Performance riser fitting into the cylinder head port where the OE fitting was removed.



STEP 10: Install the new Fleece Performance heater core supply hose. Connect it to the upper heater core port at the firewall and the new riser fitting installed on the cylinder head. Use the supplied hose clamps to secure both ends of the hose and tighten them with a 1/4" socket or flat head screwdriver.



STEP 11: Refill the coolant system and reconnect the battery terminals.

STEP 12: Start the vehicle and verify that no leaks are present. Add coolant as necessary

