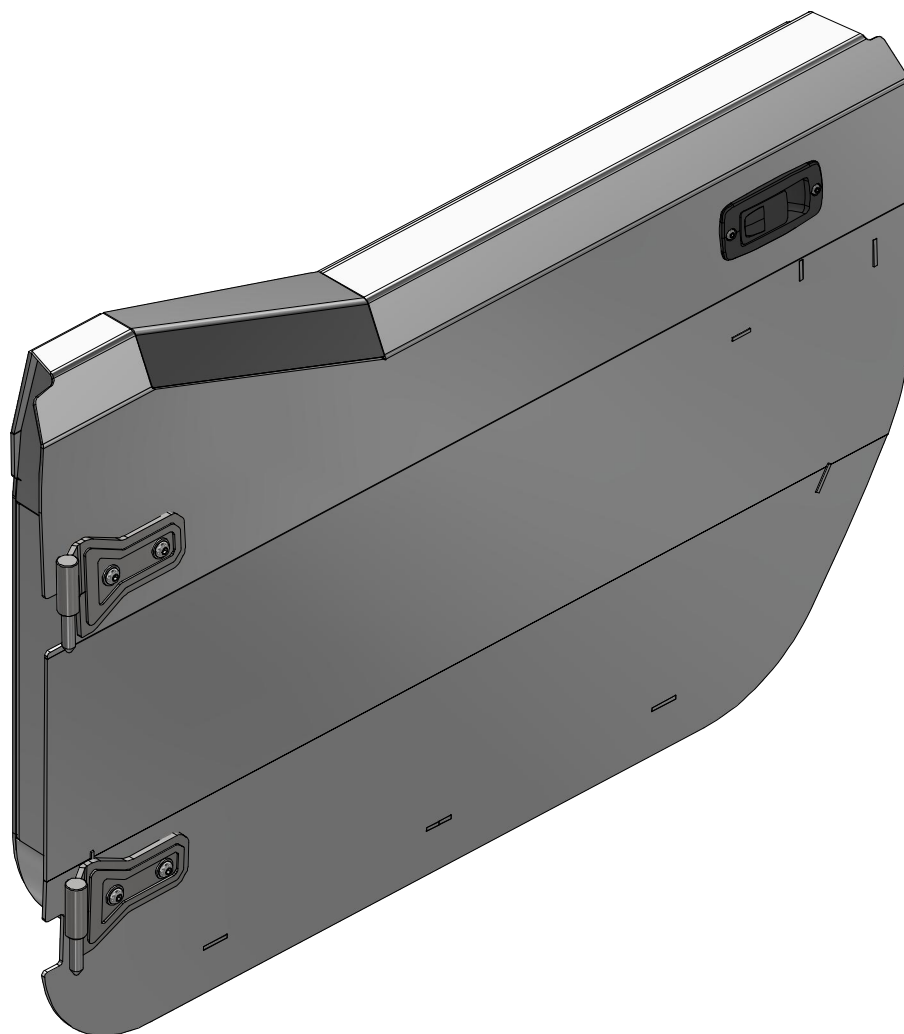


MB3055 - Assembly Instructions Front Half Doors JK/JKU

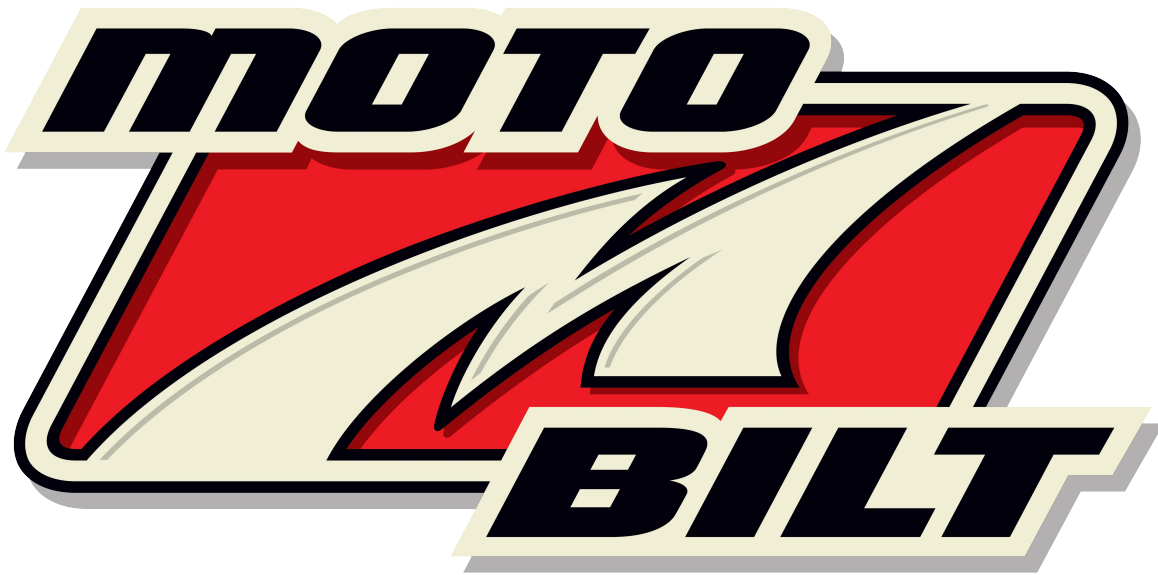
MB3055 - FRONT HALF DOORS

COMPATIBLE WITH JEEP JK/JKU



ASSEMBLY INSTRUCTIONS

MB3055 - Assembly Instructions Front Half Doors JK/JKU



Preparation and Installation Guide for Your Jeep JK Front Doors

Our new front doors is crafted from high-quality aluminum and shipped in bare metal. To achieve the best possible finish and ensure a flawless fit, we recommend the following procedure:

1. **Initial Fitting:** Before painting, assemble all components to ensure they fit perfectly on your Jeep JK Front Doors. This step is crucial to avoid adjustments post-painting that could damage the finish.
2. **Disassembly and Cleaning:** Once you confirm the fit, disassemble and thoroughly clean all parts to prepare them for painting.
3. **Professional Painting:** For a superior and durable finish, we advise having the door parts professionally prepared and painted by a reputable auto body shop. This ensures the paint is perfectly matched and applied evenly.
4. **Final Assembly:** After painting, reassemble the parts for the final installation. This process ensures all components align correctly and maintain their pristine condition.

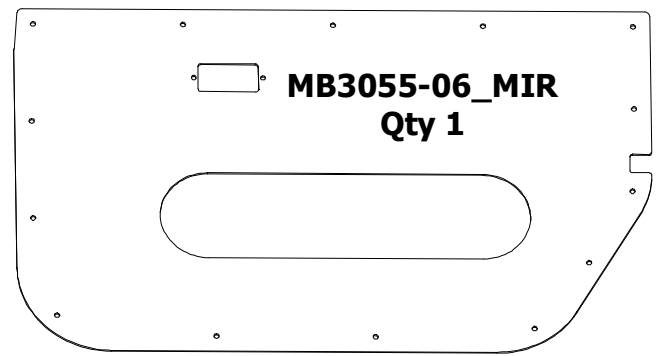
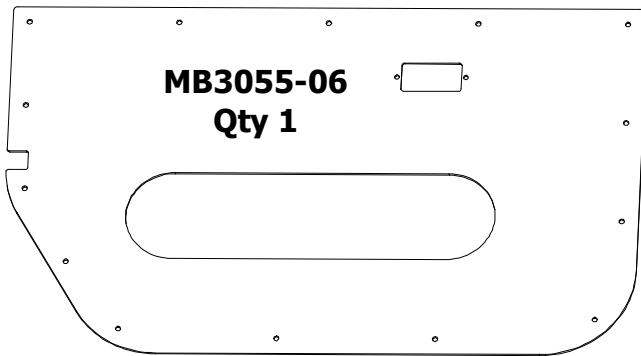
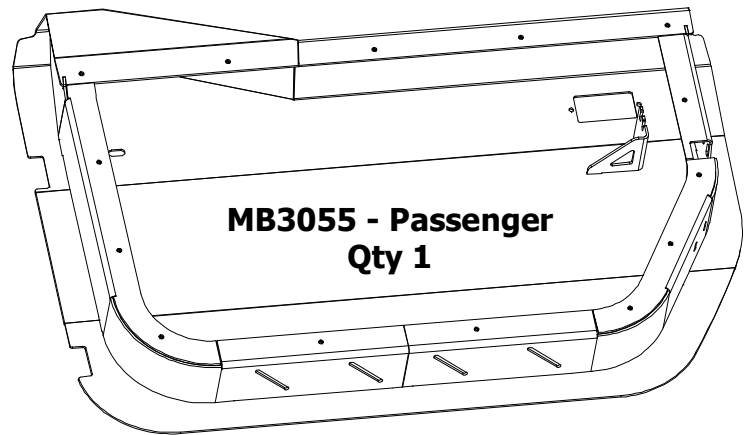
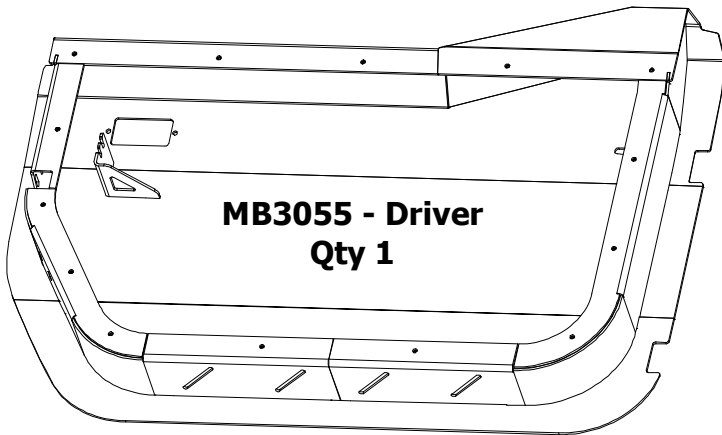
Additional Recommendations:

By following these steps, you can enhance the aesthetics and functionality of your Jeep JK Front Doors with confidence that the finish and fit are of the highest quality.

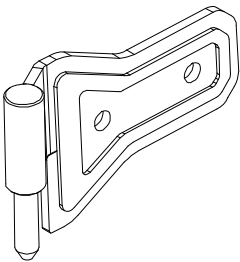
To further protect your investment, consider adding a non-slip marine grade flooring material to the removable interior panel.

MB3055 - Assembly Instructions Front Half Doors JK/JKU

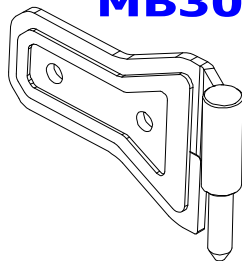
CONTENTS



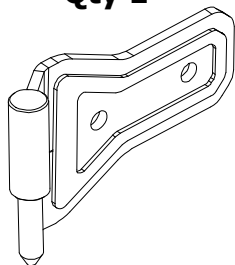
BAG LABELED AS **MB3055-KIT01**



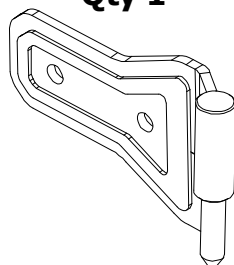
MB3064-JKT
Hinge, Upper Driver
Qty 1



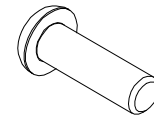
MB3064-JKT_MIR
Hinge, Upper Passenger
Qty 1



MB3064-JKB
Hinge, Lower Driver
Qty 1



MB3064-JKB_MIR
Hinge, Lower Passenger
Qty 1



Round Head Screw, Stainless
5/16"-18 UNC x 1.00" Long
Qty 8



Flat Washer, Stainless
5/16"
Qty 16

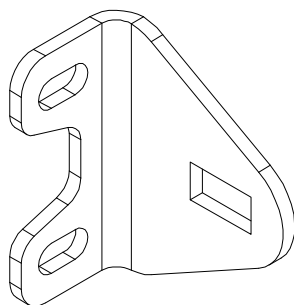


Nylock Nut, Zinc
5/16" UNC
Qty 8

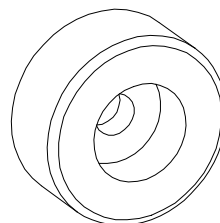
MB3055 - Assembly Instructions Front Half Doors JK/JKU

CONTENTS

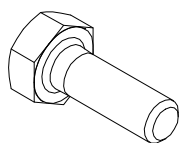
BAG LABELED AS MB3055-KIT02



MB3059-01
Qty 2



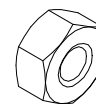
Rubber Bumper
Qty 2



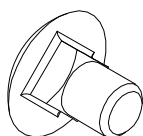
Hex Bolt
1/4"-20 UNC x 3/4" Long
Qty 4



Flat Washer
1/4"
Qty 8



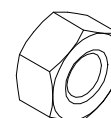
Nylock Nut
1/4"-20 UNC
Qty 4



Carriage Bolt
5/16"-18 UNC x 3/4" Long
Qty 2

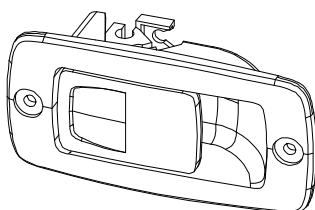


Flat Washer, Stainless
5/16"
Qty 2

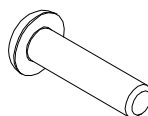


Nylock Nut, Stainless
5/16"-18 UNC
Qty 2

BAG LABELED AS MB3055-KIT03



Paddle Actuator
Qty 4



Round Head Screw
#10-24 x 3/4" Long
Qty 42



Flat Washer
M6
Qty 8



Nylock Nut
#10-24 UNC
Qty 8

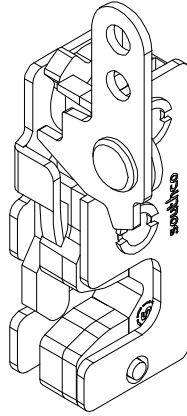


Release Cable
Qty 4

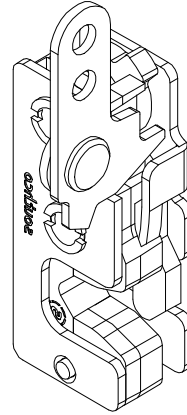
MB3055 - Assembly Instructions Front Half Doors JK/JKU

CONTENTS

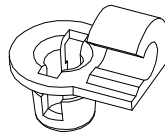
BAG LABELED AS
MB3055-KIT04



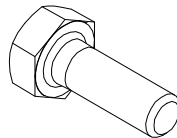
**Rotary Latch
Driver Side Door
Qty 1**



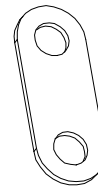
**Rotary Latch
Passenger Side Door
Qty 1**



**Cable Retainer
Qty 4**



**Hex Bolt
1/4"-20 UNC x 3/4" Long
Qty 4**



**MB2190
Rotary Latch Spacer Washer
Qty 4**

MB3055 - Assembly Instructions Front Half Doors JK/JKU

ASSEMBLY - STEP 1

HINGE NOTE:

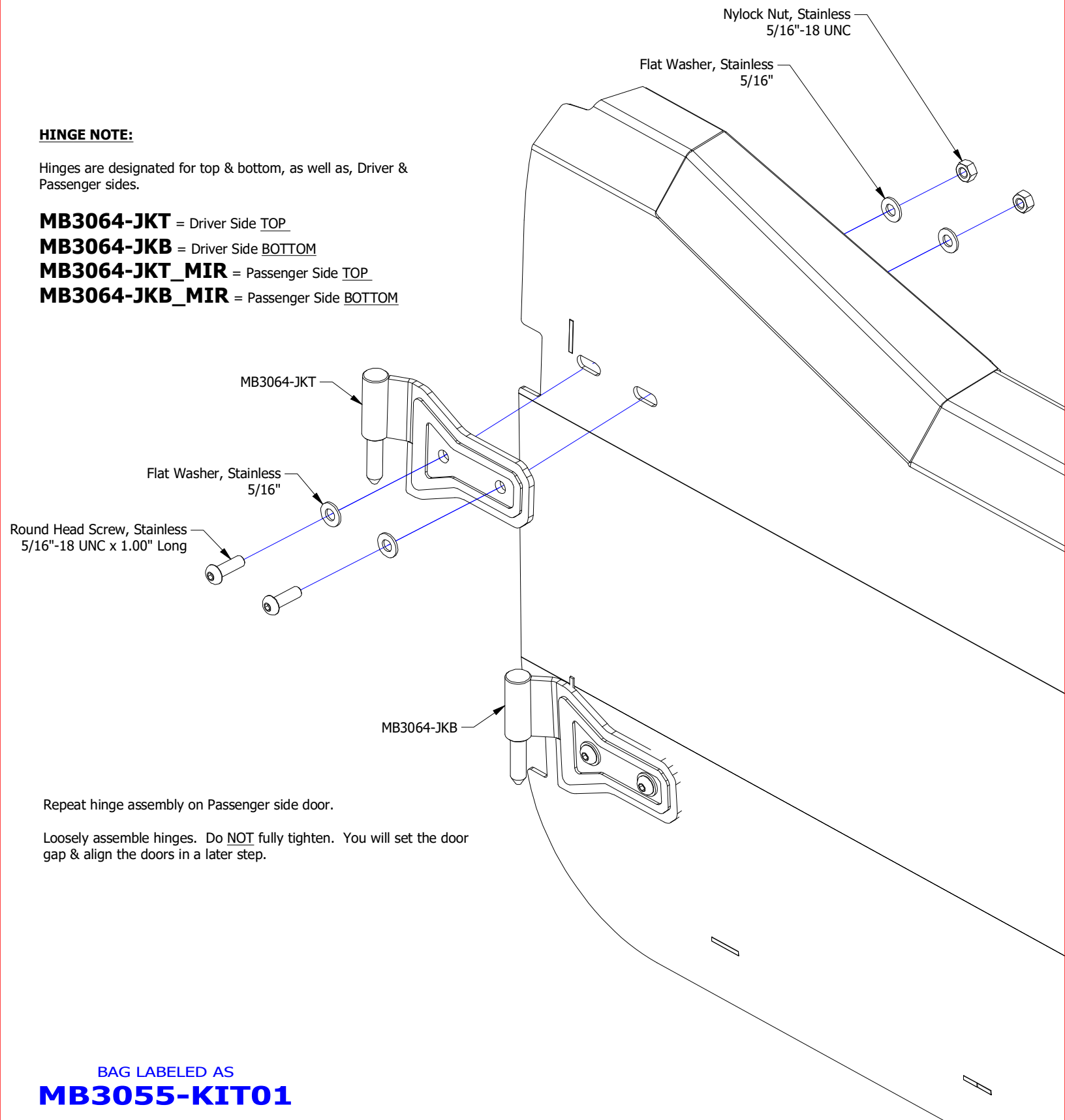
Hinges are designated for top & bottom, as well as, Driver & Passenger sides.

MB3064-JKT = Driver Side TOP

MB3064-JKB = Driver Side BOTTOM

MB3064-JKT_MIR = Passenger Side TOP

MB3064-JKB_MIR = Passenger Side BOTTOM



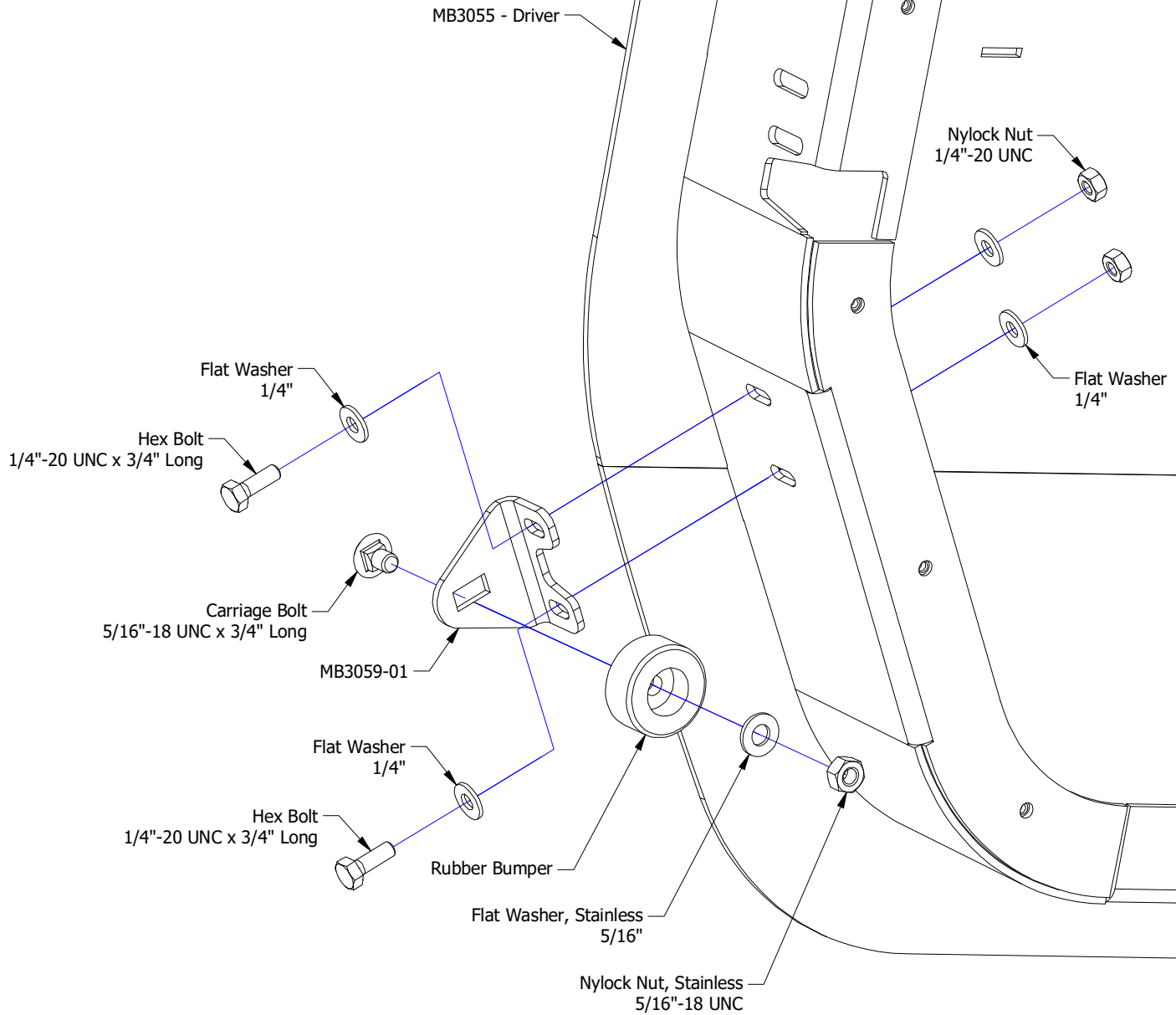
Repeat hinge assembly on Passenger side door.

Loosely assemble hinges. Do NOT fully tighten. You will set the door gap & align the doors in a later step.

BAG LABELED AS
MB3055-KIT01

MB3055 - Assembly Instructions Front Half Doors JK/JKU

ASSEMBLY - STEP 2



Repeat rubber bumper assembly on Passenger side door.

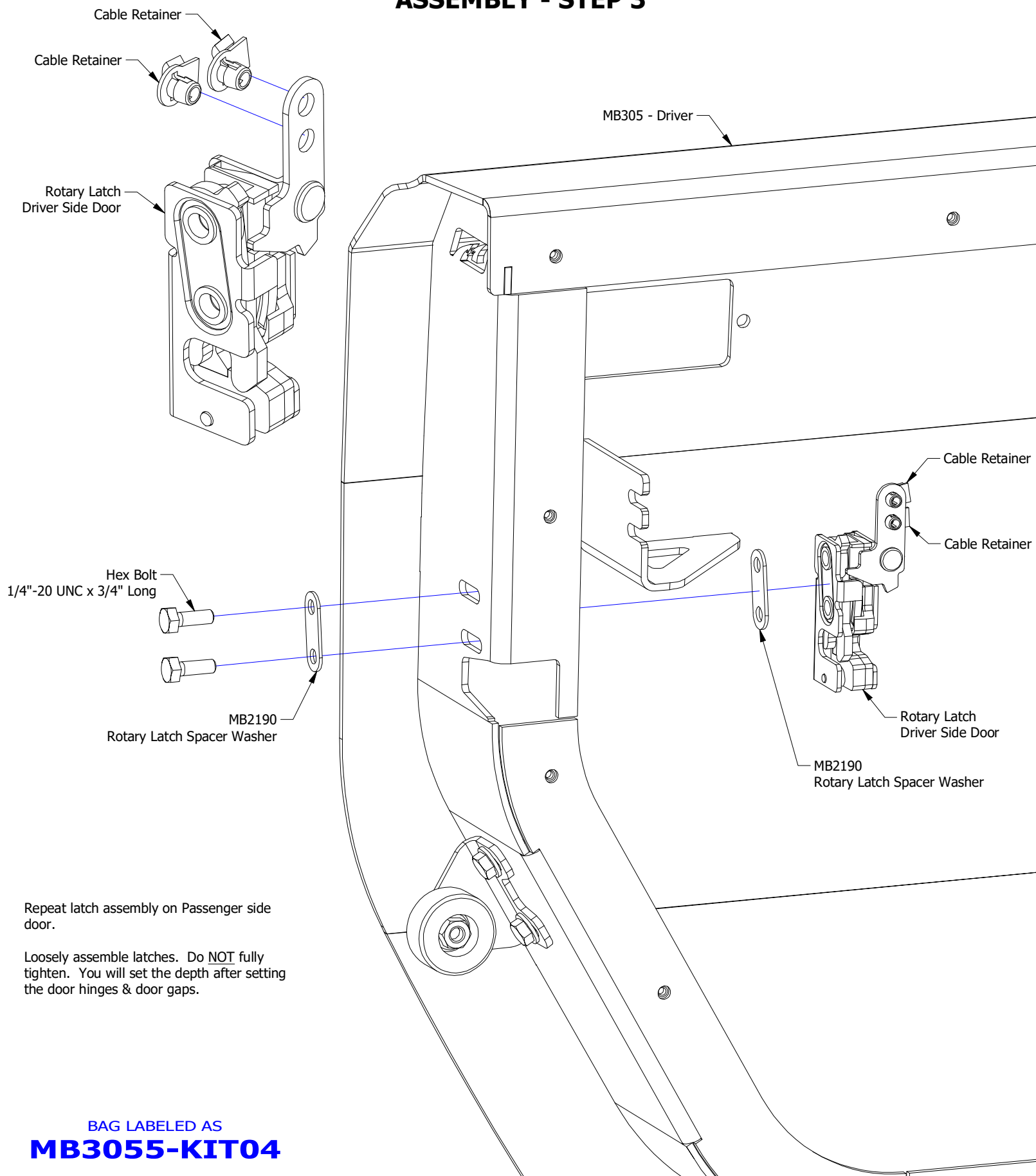
Tighten the fasteners for the rubber bumper.

Loosely assemble brackets. Do NOT fully tighten. You will set rubber bumper bracket depth after setting the door hinges & door gaps.

BAG LABELED AS
MB3055-KIT02

MB3055 - Assembly Instructions Front Half Doors JK/JKU

ASSEMBLY - STEP 3

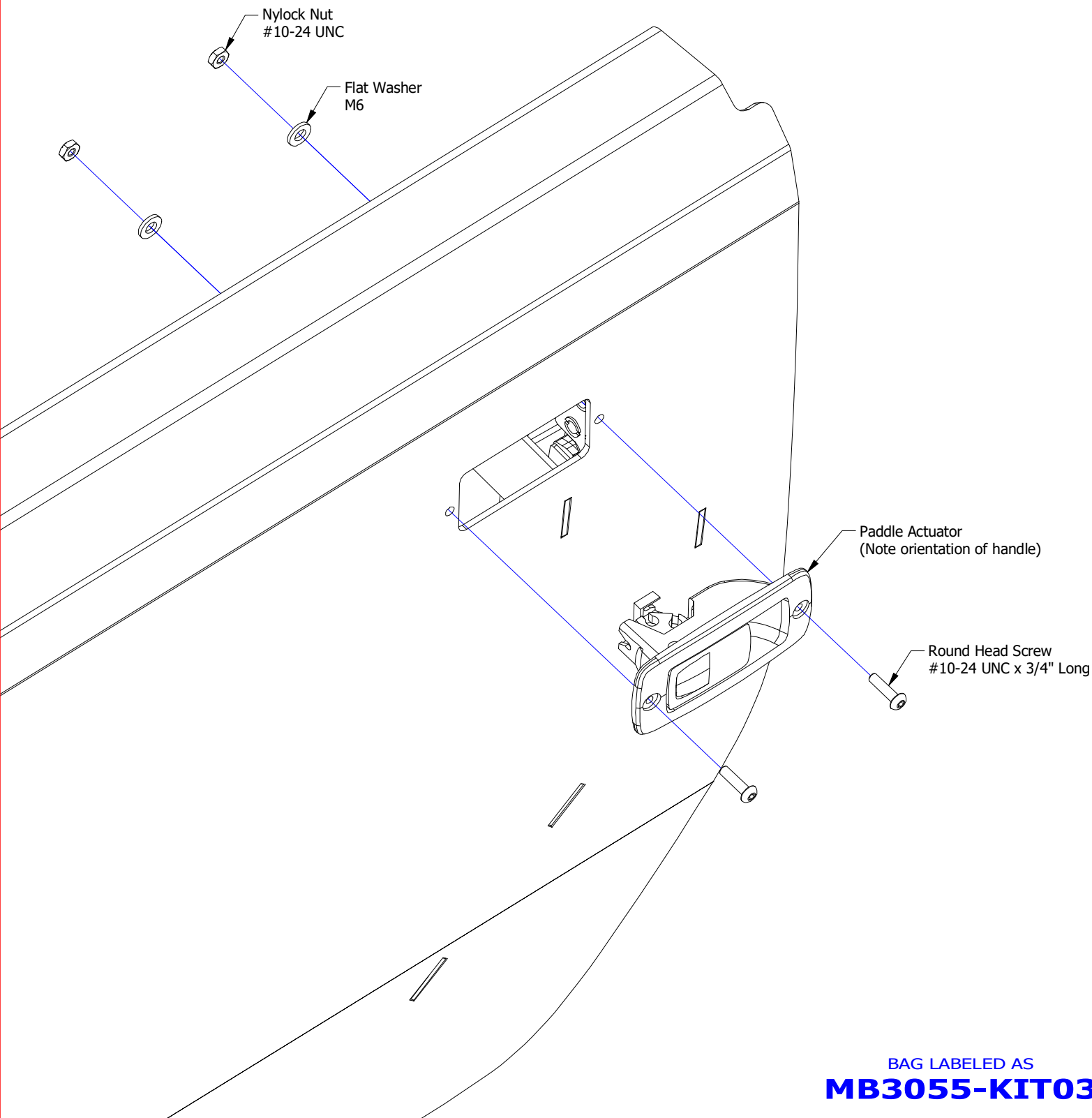


MB3055 - Assembly Instructions Front Half Doors JK/JKU

ASSEMBLY - STEP 4

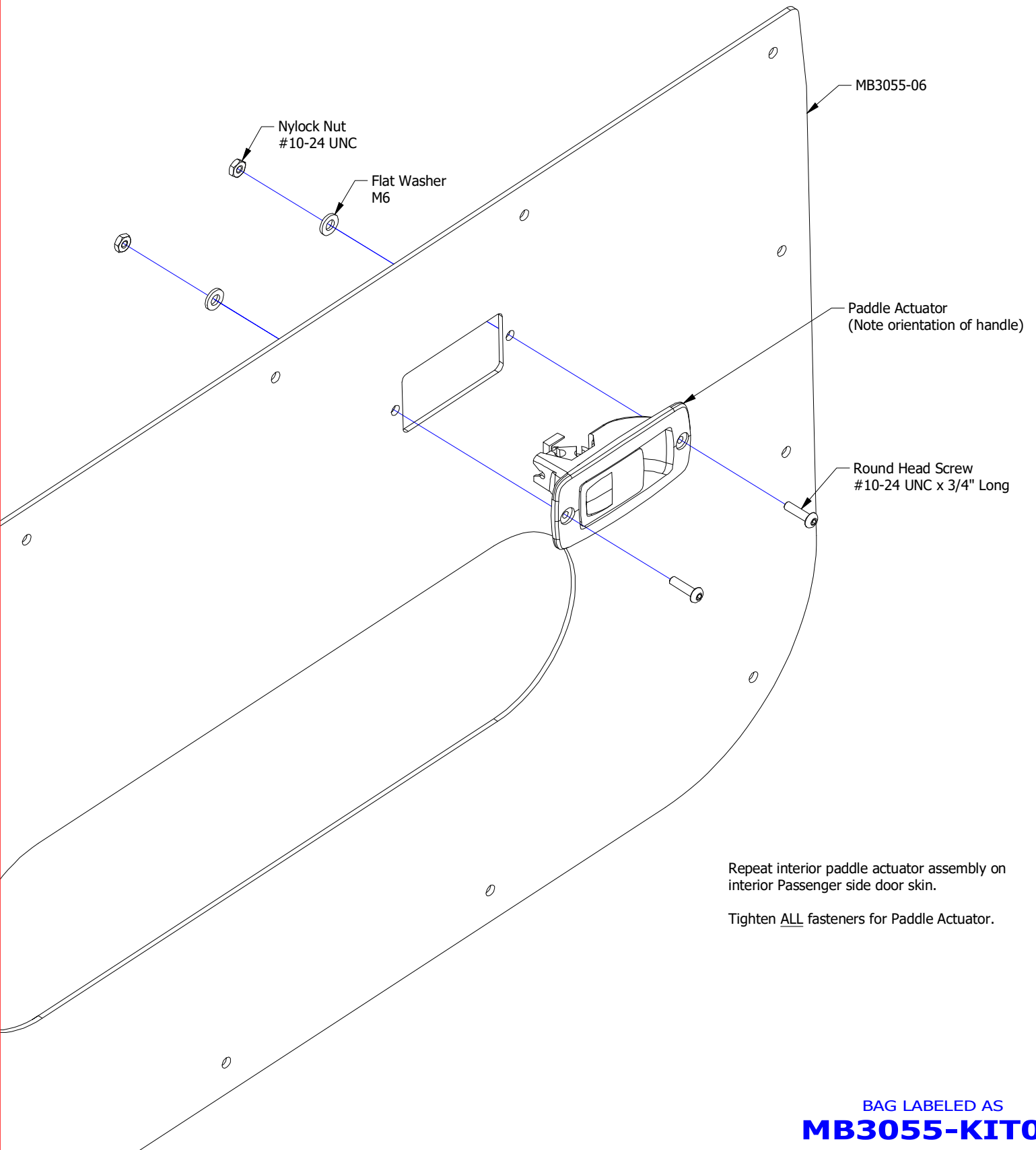
Repeat exterior paddle actuator assembly on Passenger side door.

Tighten ALL fasteners for Paddle Actuator.



MB3055 - Assembly Instructions Front Half Doors JK/JKU

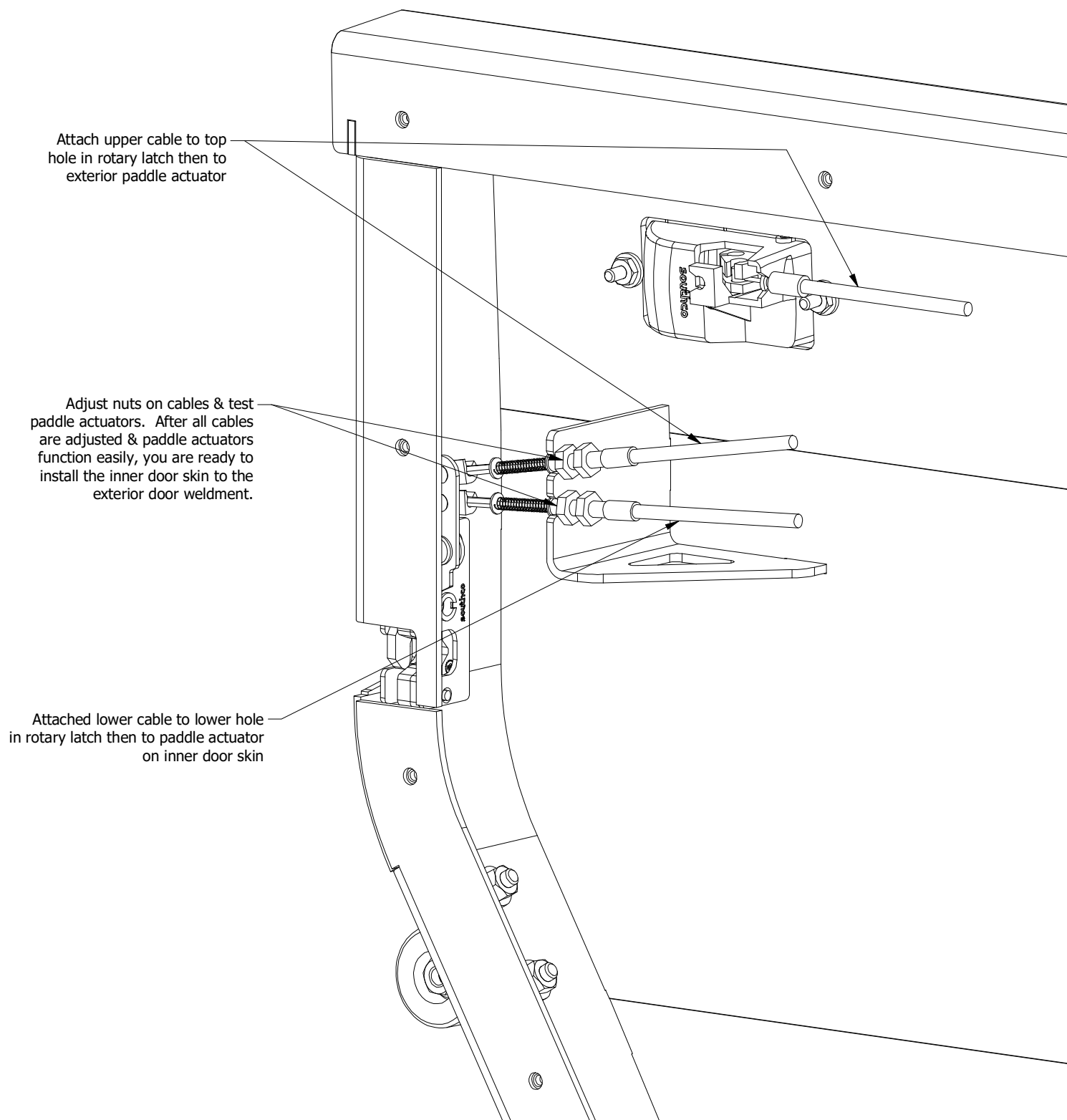
ASSEMBLY - STEP 5



BAG LABELED AS
MB3055-KIT03

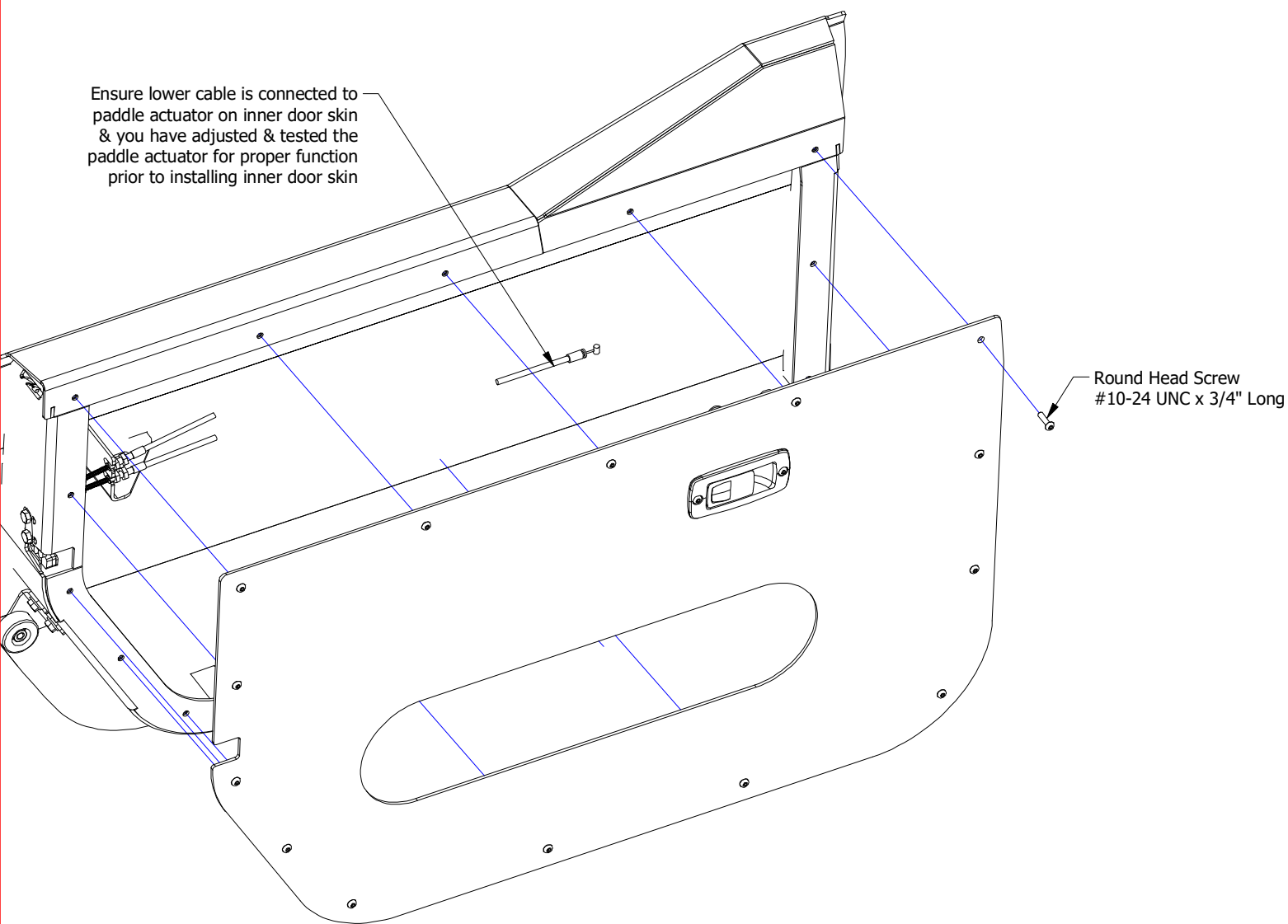
MB3055 - Assembly Instructions Front Half Doors JK/JKU

ASSEMBLY - STEP 6



MB3055 - Assembly Instructions Front Half Doors JK/JKU

ASSEMBLY - STEP 7



BAG LABELED AS
MB3055-KIT03

MB3055 - Assembly Instructions Front Half Doors JK/JKU

ASSEMBLY - STEP 8

FINAL ASSEMBLY & ADJUSTMENT

1. Ensure hinge bolts are loose
2. Place assembled half door on vehicle door hinges
3. Close the door & view the door from the side of the vehicle
4. Adjust the door to ensure there is an even reveal & gaps from left to right & top to bottom
5. With the door remaining closed, tighten the hinges bolts
6. Open the door & adjust the rotary latch fasteners as well as the rubber bumper so that the door latches smoothly & the door sits flush with the outer body

