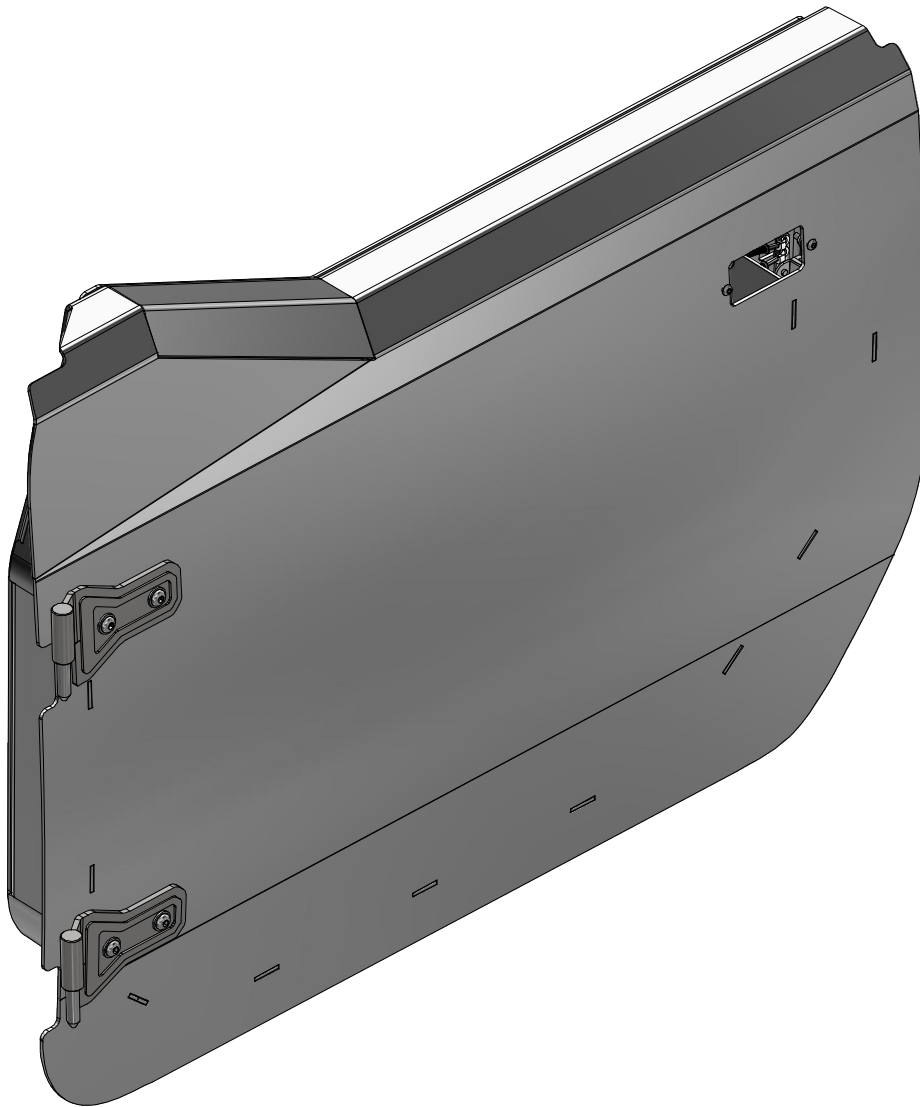


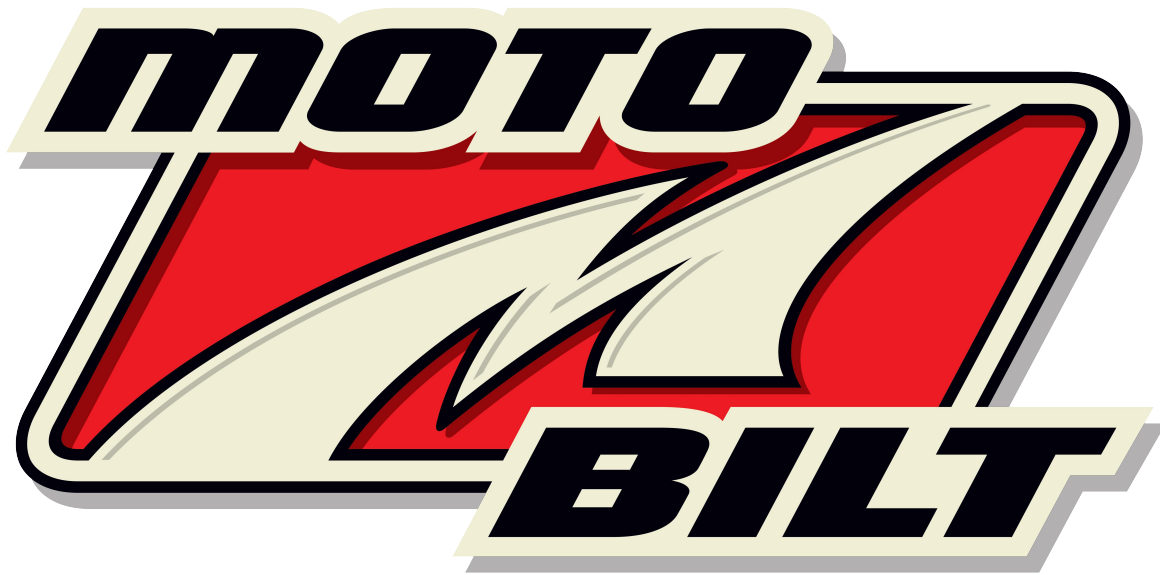
MB3042 - FRONT HALF DOORS

COMPATIBLE WITH JEEP JL/JLU & JT GLADIATOR



ASSEMBLY INSTRUCTIONS

MB3042 - Assembly Instructions Front Half Doors JL/JLU/JT



Preparation and Installation Guide for Your Jeep JL/JT Front Doors

Our new front doors is crafted from high-quality aluminum and shipped in bare metal. To achieve the best possible finish and ensure a flawless fit, we recommend the following procedure:

1. **Initial Fitting:** Before painting, assemble all components to ensure they fit perfectly on your Jeep JL/JT Front Doors. This step is crucial to avoid adjustments post-painting that could damage the finish.
2. **Disassembly and Cleaning:** Once you confirm the fit, disassemble and thoroughly clean all parts to prepare them for painting.
3. **Professional Painting:** For a superior and durable finish, we advise having the door parts professionally prepared and painted by a reputable auto body shop. This ensures the paint is perfectly matched and applied evenly.
4. **Final Assembly:** After painting, reassemble the parts for the final installation. This process ensures all components align correctly and maintain their pristine condition.

Additional Recommendations:

By following these steps, you can enhance the aesthetics and functionality of your Jeep JL/JT Front Doors with confidence that the finish and fit are of the highest quality.

To further protect your investment, consider adding a non-slip marine grade flooring material to the removable interior panel.

MB3042 - Assembly Instructions Front Half Doors JL/JLU/JT

CONTENTS

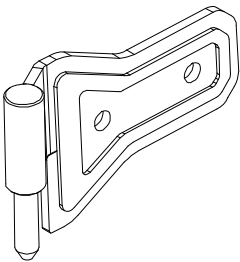
MB3042 - Driver
Qty 1

MB3042 - Passenger
Qty 1

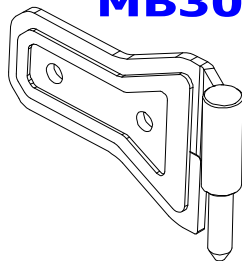
MB3042-04
Qty 1

MB3042-04_MIR
Qty 1

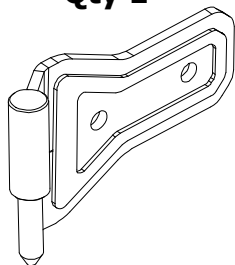
BAG LABELED AS
MB3042-KIT01



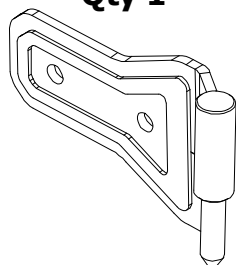
MB3064-JLT
Hinge, Upper Driver
Qty 1



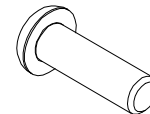
MB3064-JLT_MIR
Hinge, Upper Passenger
Qty 1



MB3064-JLB
Hinge, Lower Driver
Qty 1



MB3064-JLB_MIR
Hinge, Lower Passenger
Qty 1



Round Head Screw, Stainless
5/16"-18 UNC x 1.00" Long
Qty 8



Flat Washer, Stainless
5/16"
Qty 16

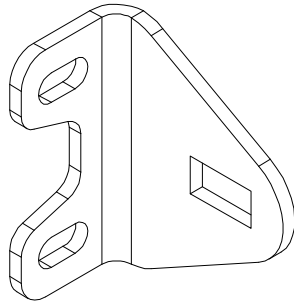


Nylock Nut, Zinc
5/16" UNC
Qty 8

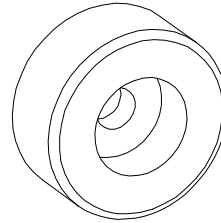
MB3042 - Assembly Instructions Front Half Doors JL/JLU/JT

CONTENTS

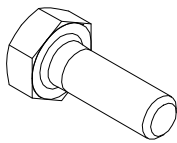
BAG LABELED AS **MB3042-KIT02**



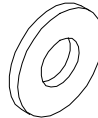
MB3059-01
Qty 2



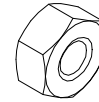
Rubber Bumper
Qty 2



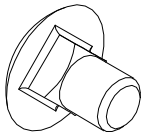
Hex Bolt
1/4"-20 UNC x 3/4" Long
Qty 4



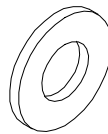
Flat Washer
1/4"
Qty 8



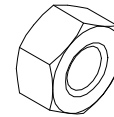
Nylock Nut
1/4"-20 UNC
Qty 4



Carriage Bolt
5/16"-18 UNC x 3/4" Long
Qty 2

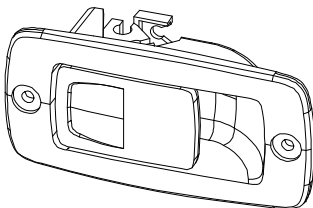


Flat Washer, Stainless
5/16"
Qty 2

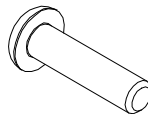


Nylock Nut, Stainless
5/16"-18 UNC
Qty 2

BAG LABELED AS **MB3042-KIT03**



Paddle Actuator
Qty 4



Round Head Screw
#10-24 x 3/4" Long
Qty 42



Flat Washer
M6
Qty 8



Nylock Nut
#10-24 UNC
Qty 8

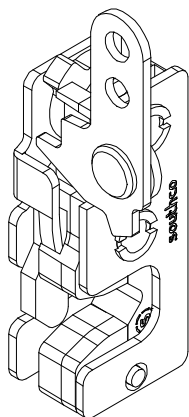


Release Cable
Qty 4

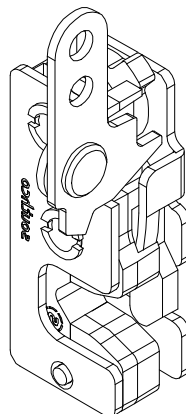
MB3042 - Assembly Instructions Front Half Doors JL/JLU/JT

CONTENTS

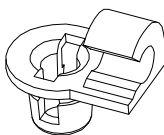
BAG LABELED AS
MB3042-KIT04



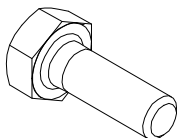
**Rotary Latch
Driver Side Door
Qty 1**



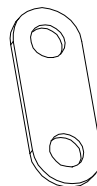
**Rotary Latch
Passenger Side Door
Qty 1**



**Cable Retainer
Qty 4**



**Hex Bolt
1/4"-20 UNC x 3/4" Long
Qty 4**



**MB2190
Rotary Latch Spacer Washer
Qty 4**

MB3042 - Assembly Instructions Front Half Doors JL/JLU/JT

ASSEMBLY - STEP 1

HINGE NOTE:

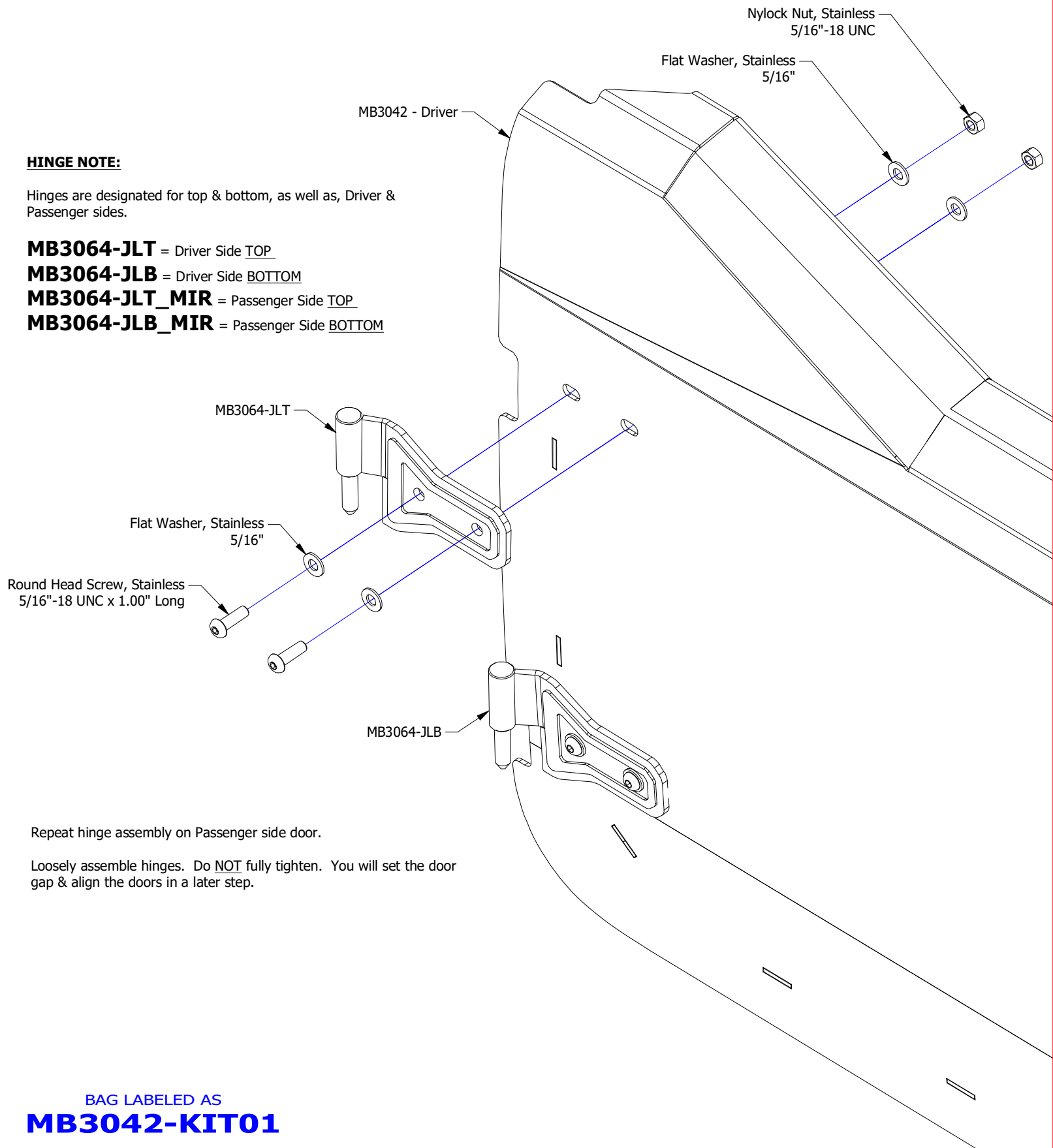
Hinges are designated for top & bottom, as well as, Driver & Passenger sides.

MB3064-JLT = Driver Side TOP

MB3064-JLB = Driver Side BOTTOM

MB3064-JLT_MIR = Passenger Side TOP

MB3064-JLB_MIR = Passenger Side BOTTOM



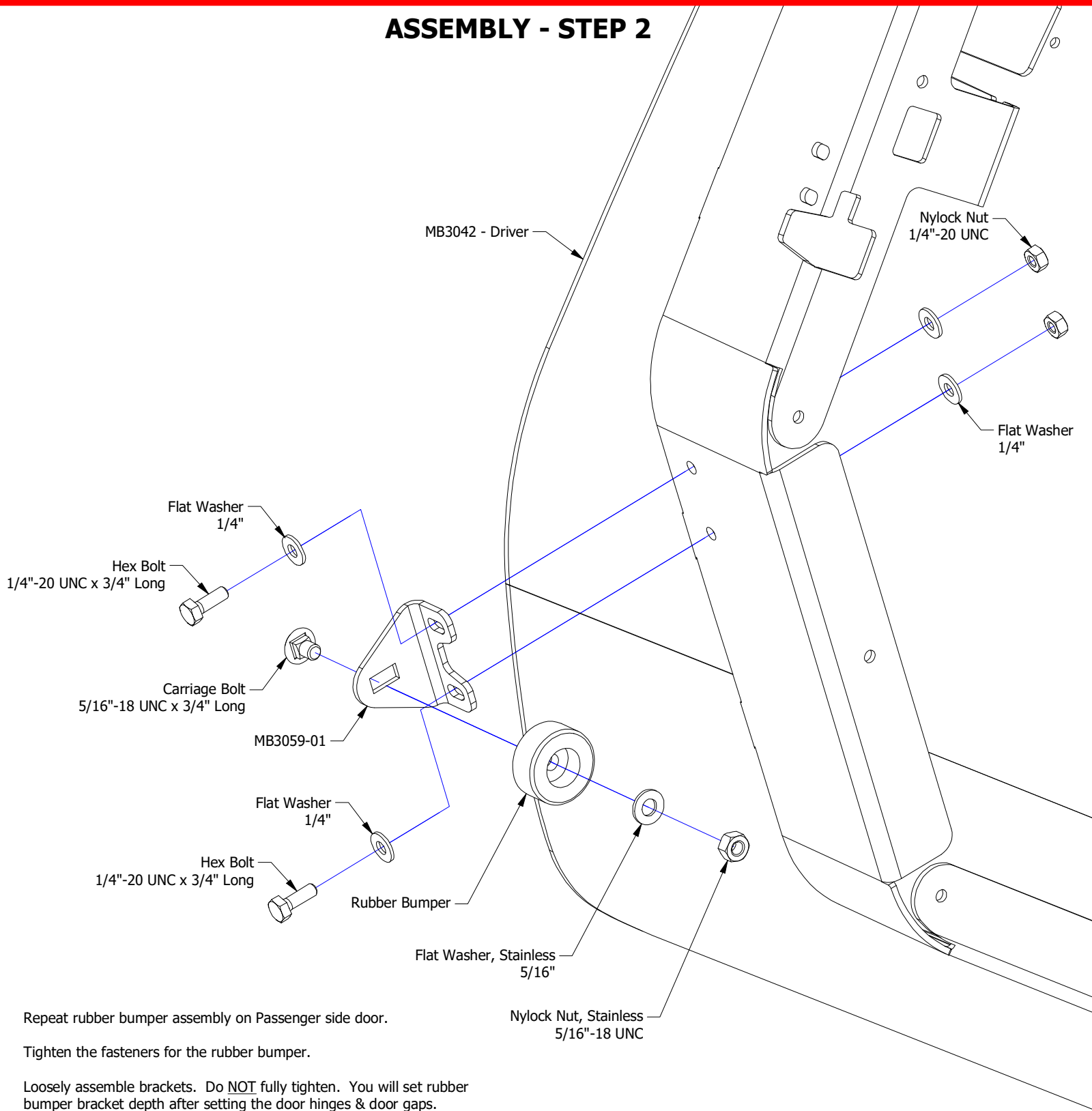
Repeat hinge assembly on Passenger side door.

Loosely assemble hinges. Do NOT fully tighten. You will set the door gap & align the doors in a later step.

BAG LABELED AS
MB3042-KIT01

MB3042 - Assembly Instructions Front Half Doors JL/JLU/JT

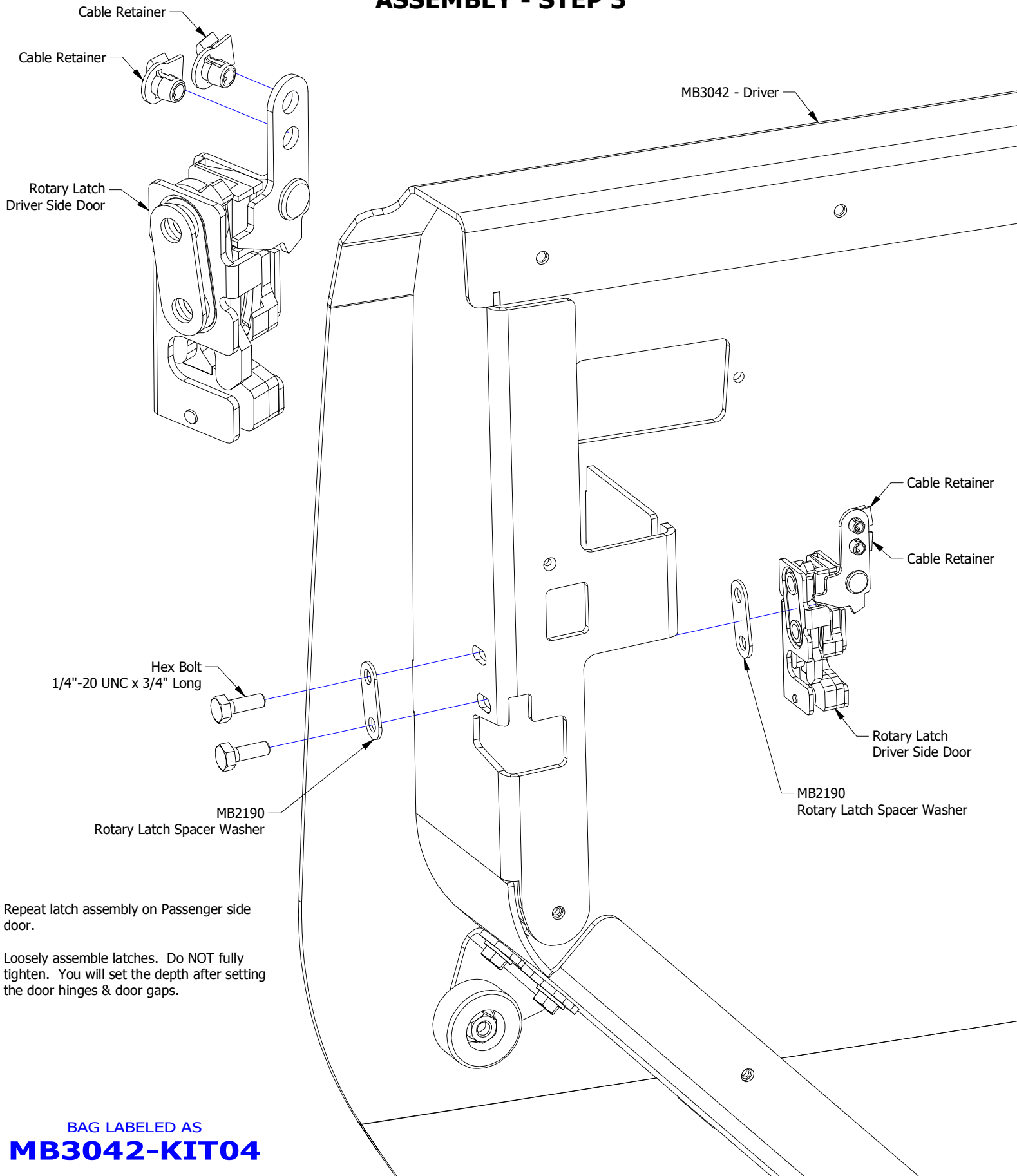
ASSEMBLY - STEP 2



BAG LABELED AS
MB3042-KIT02

MB3042 - Assembly Instructions Front Half Doors JL/JLU/JT

ASSEMBLY - STEP 3



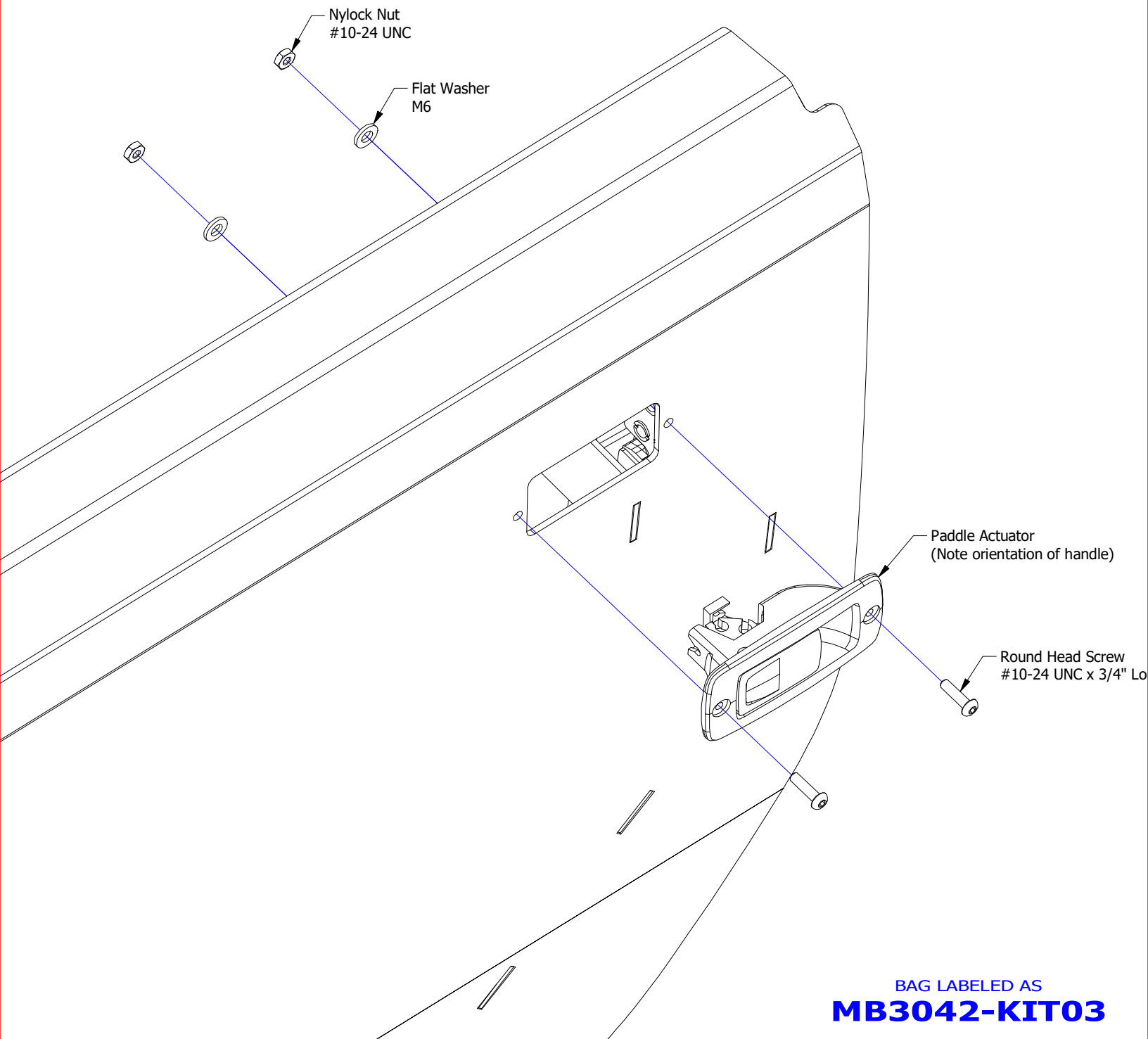
BAG LABELED AS
MB3042-KIT04

MB3042 - Assembly Instructions Front Half Doors JL/JLU/JT

ASSEMBLY - STEP 4

Repeat exterior paddle actuator assembly on Passenger side door.

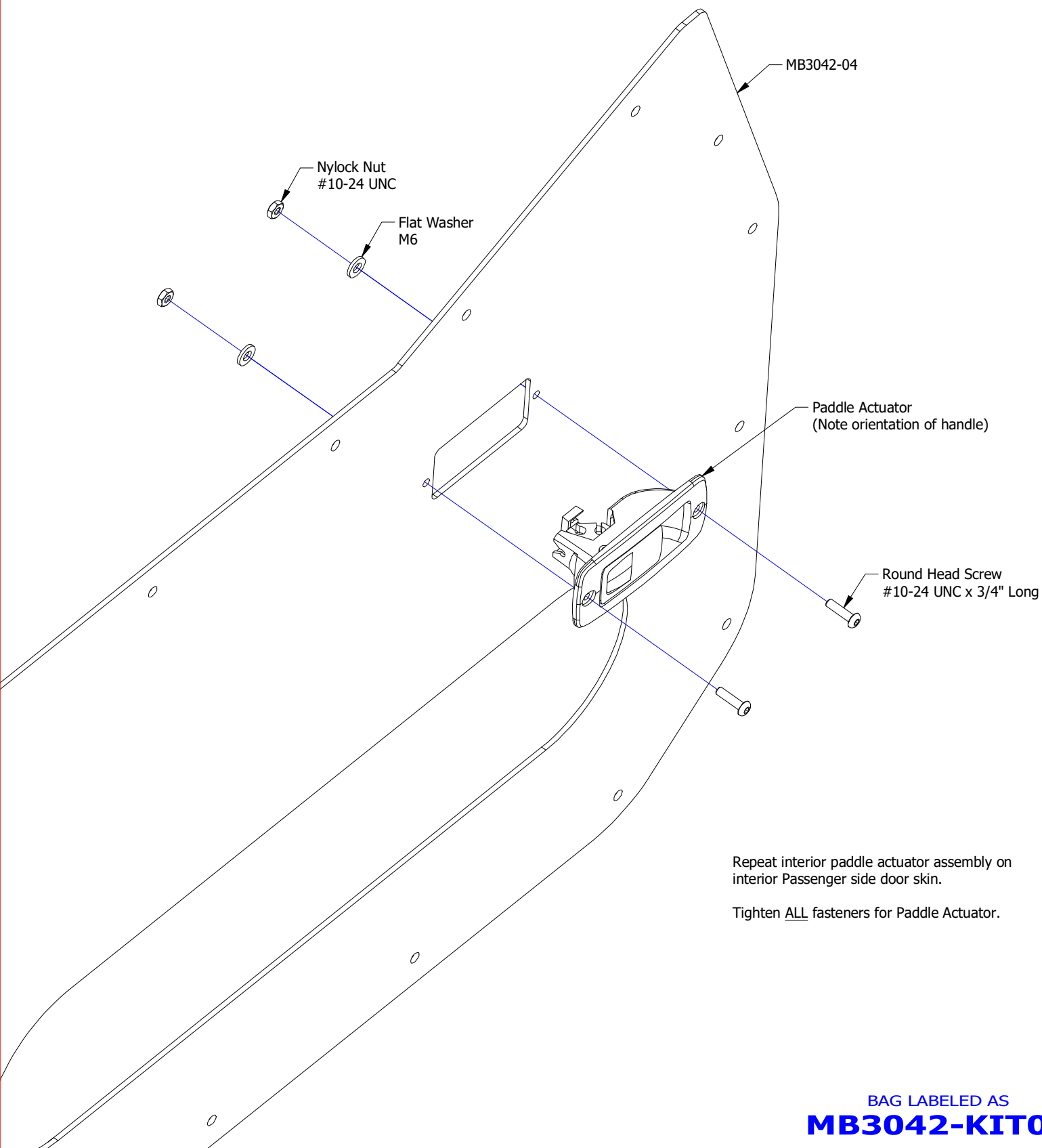
Tighten ALL fasteners for Paddle Actuator.



BAG LABELED AS
MB3042-KIT03

MB3042 - Assembly Instructions Front Half Doors JL/JLU/JT

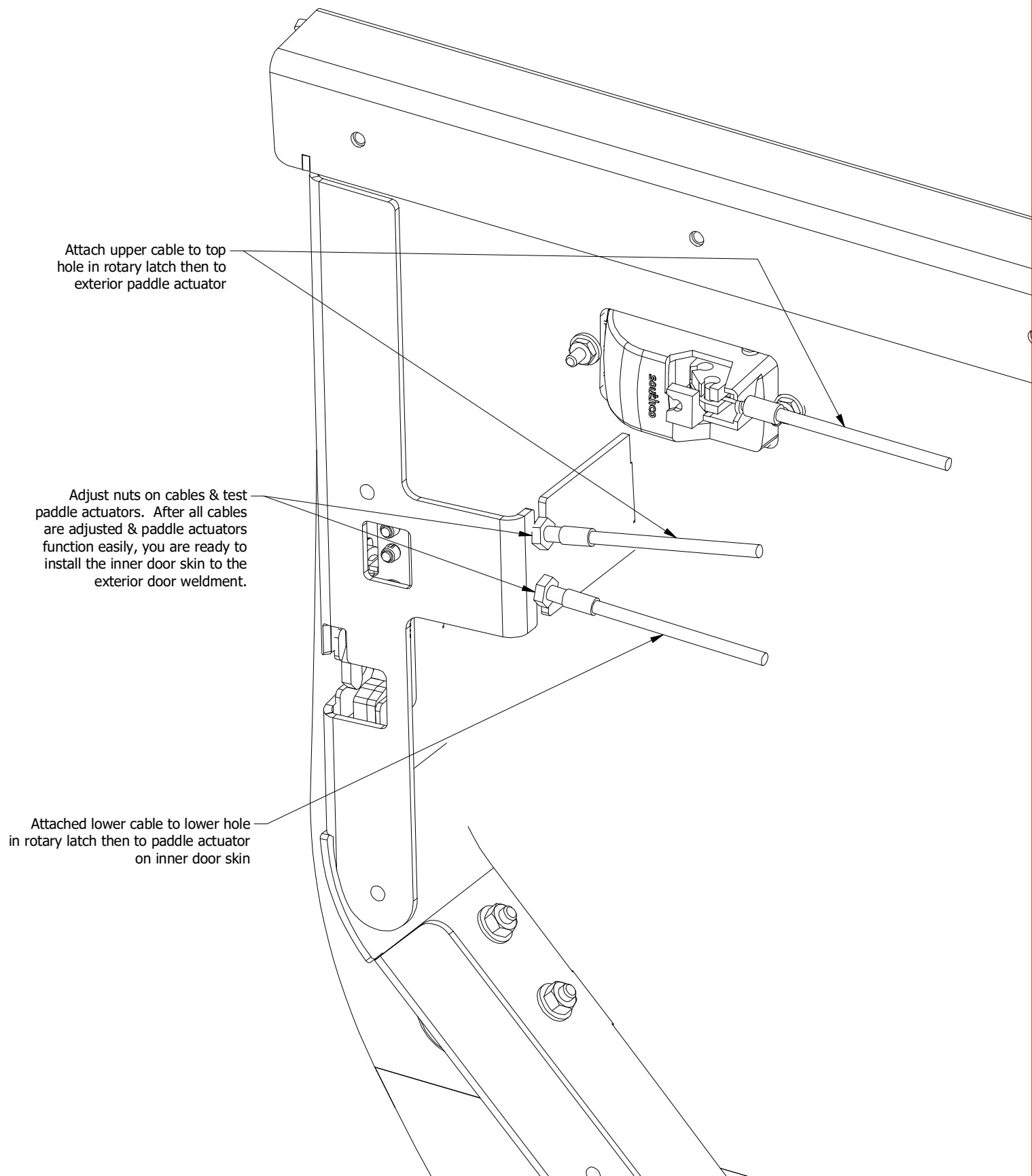
ASSEMBLY - STEP 5



BAG LABELED AS
MB3042-KIT03

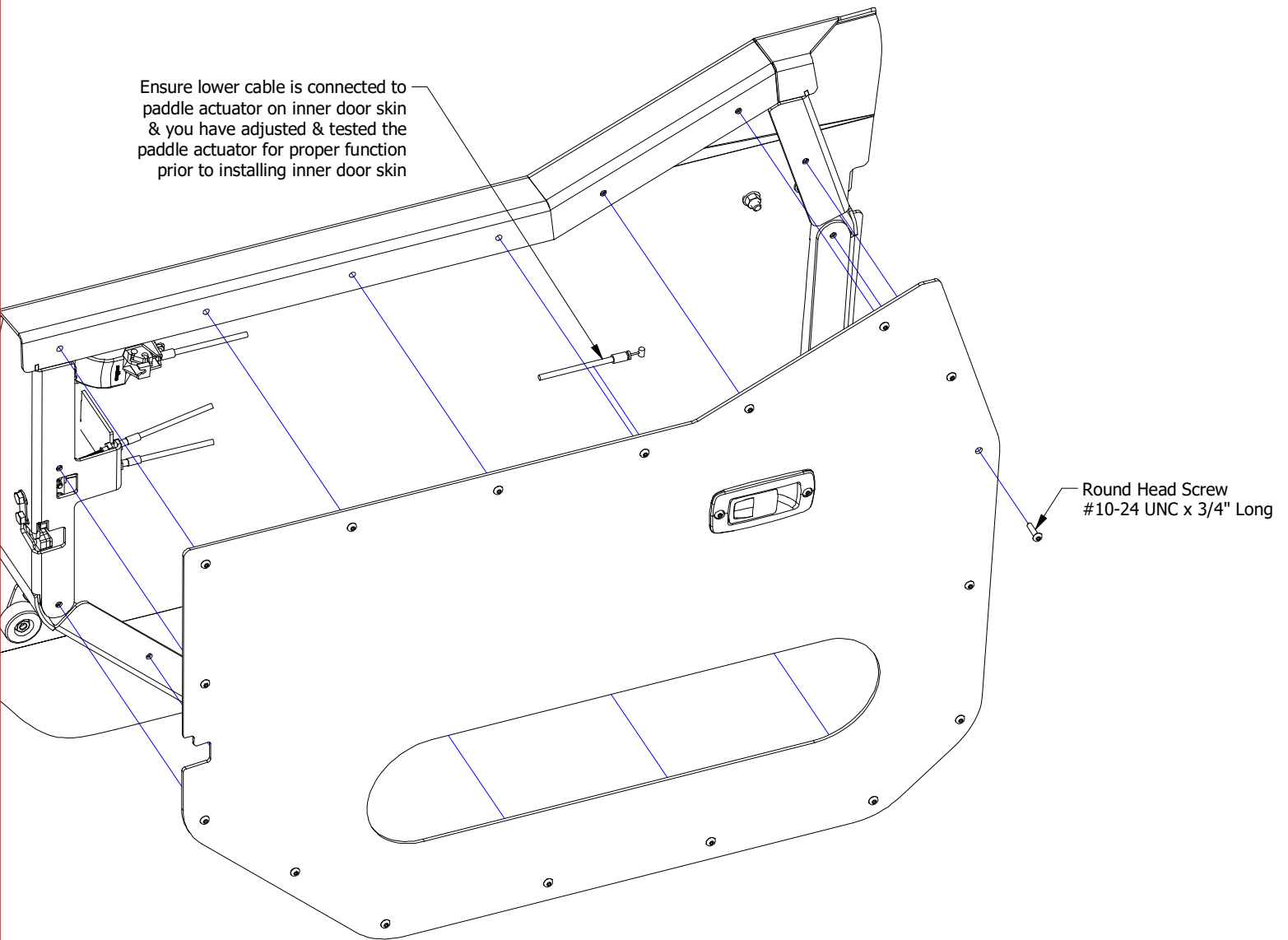
MB3042 - Assembly Instructions Front Half Doors JL/JLU/JT

ASSEMBLY - STEP 6



MB3042 - Assembly Instructions Front Half Doors JL/JLU/JT

ASSEMBLY - STEP 7



BAG LABELED AS
MB3042-KIT03

MB3042 - Assembly Instructions Front Half Doors JL/JLU/JT

ASSEMBLY - STEP 8

FINAL ASSEMBLY & ADJUSTMENT

1. Ensure hinge bolts are loose
2. Place assembled half door on vehicle door hinges
3. Close the door & view the door from the side of the vehicle
4. Adjust the door to ensure there is an even reveal & gaps from left to right & top to bottom
5. With the door remaining closed, tighten the hinges bolts
6. Open the door & adjust the rotary latch fasteners as well as the rubber bumper so that the door latches smoothly & the door sits flush with the outer body

