

**MB3055 - Assembly Instructions Front Half Doors JK/JKU**

# **MB3055 - FRONT HALF DOORS**

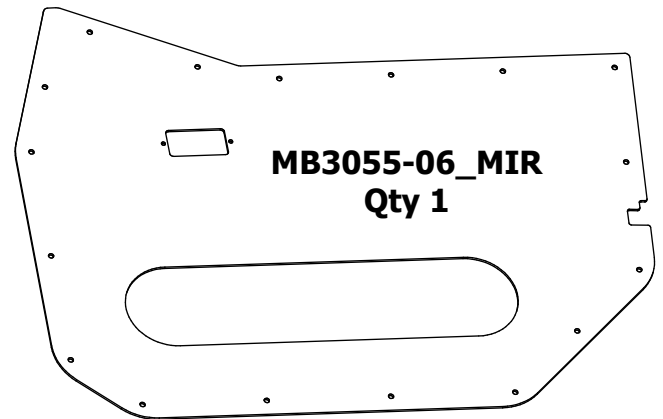
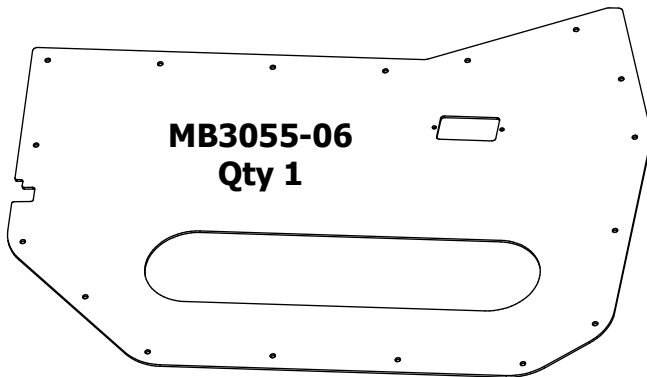
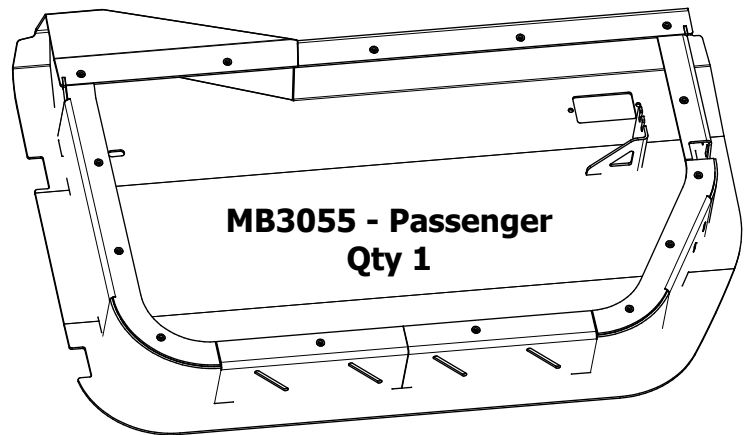
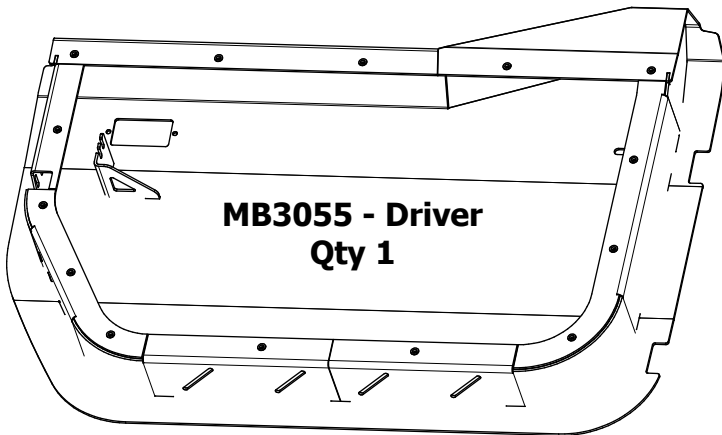
**COMPATIBLE WITH JEEP JK/JKU**



## **ASSEMBLY INSTRUCTIONS**

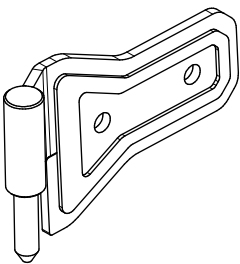
# MB3055 - Assembly Instructions Front Half Doors JK/JKU

## CONTENTS

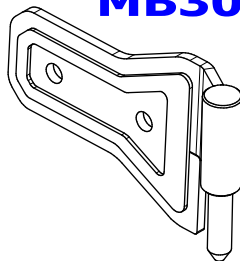


BAG LABELED AS

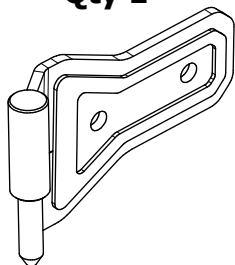
## MB3055-KIT01



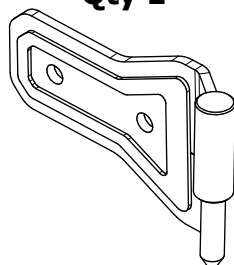
**MB3064-JKT**  
Hinge, Upper Driver  
Qty 1



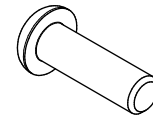
**MB3064-JKT\_MIR**  
Hinge, Upper Passenger  
Qty 1



**MB3064-JKB**  
Hinge, Lower Driver  
Qty 1



**MB3064-JKB\_MIR**  
Hinge, Lower Passenger  
Qty 1



**Round Head Screw, Stainless**  
5/16"-18 UNC x 1.00" Long  
Qty 8



**Flat Washer, Stainless**  
5/16"  
Qty 16



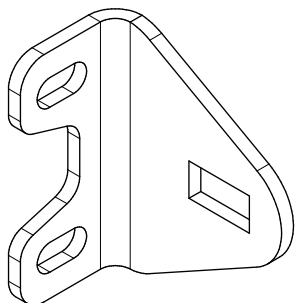
**Nylock Nut, Stainless**  
5/16" UNC  
Qty 8

# MB3055 - Assembly Instructions Front Half Doors JK/JKU

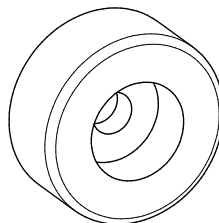
## CONTENTS

BAG LABELED AS

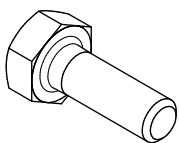
### MB3055-KIT02



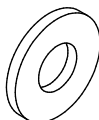
**MB3059-01**  
Qty 2



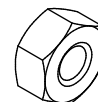
**Rubber Bumper**  
Qty 2



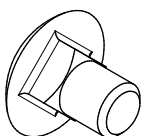
**Hex Bolt**  
1/4"-20 UNC x 3/4" Long  
Qty 4



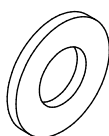
**Flat Washer**  
1/4"  
Qty 8



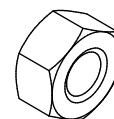
**Nylock Nut**  
1/4"-20 UNC  
Qty 4



**Carriage Bolt**  
5/16"-18 UNC x 3/4" Long  
Qty 2



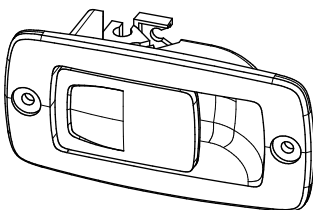
**Flat Washer, Stainless**  
5/16"  
Qty 2



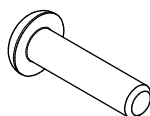
**Nylock Nut, Stainless**  
5/16"-18 UNC  
Qty 2

BAG LABELED AS

### MB3055-KIT03



**Paddle Actuator**  
Qty 4



**Round Head Screw**  
#10-24 x 3/4" Long  
Qty 42



**Flat Washer**  
M6  
Qty 8



**Nylock Nut**  
#10-24 UNC  
Qty 8

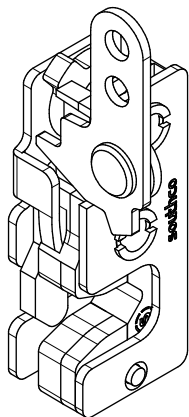


**Release Cable**  
Qty 4

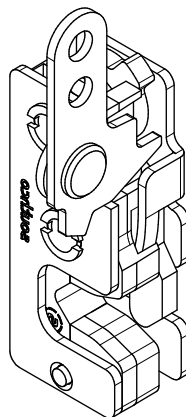
# MB3055 - Assembly Instructions Front Half Doors JK/JKU

## CONTENTS

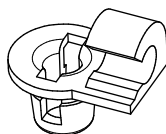
BAG LABELED AS  
**MB3055-KIT04**



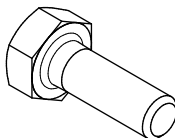
**Rotary Latch  
Driver Side Door  
Qty 1**



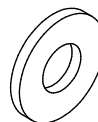
**Rotary Latch  
Passenger Side Door  
Qty 1**



**Cable Retainer  
Qty 4**



**Hex Bolt  
1/4"-20 UNC x 3/4" Long  
Qty 4**



**Flat Washer  
1/4"  
Qty 4**

# MB3055 - Assembly Instructions Front Half Doors JK/JKU

## ASSEMBLY - STEP 1

### HINGE NOTE:

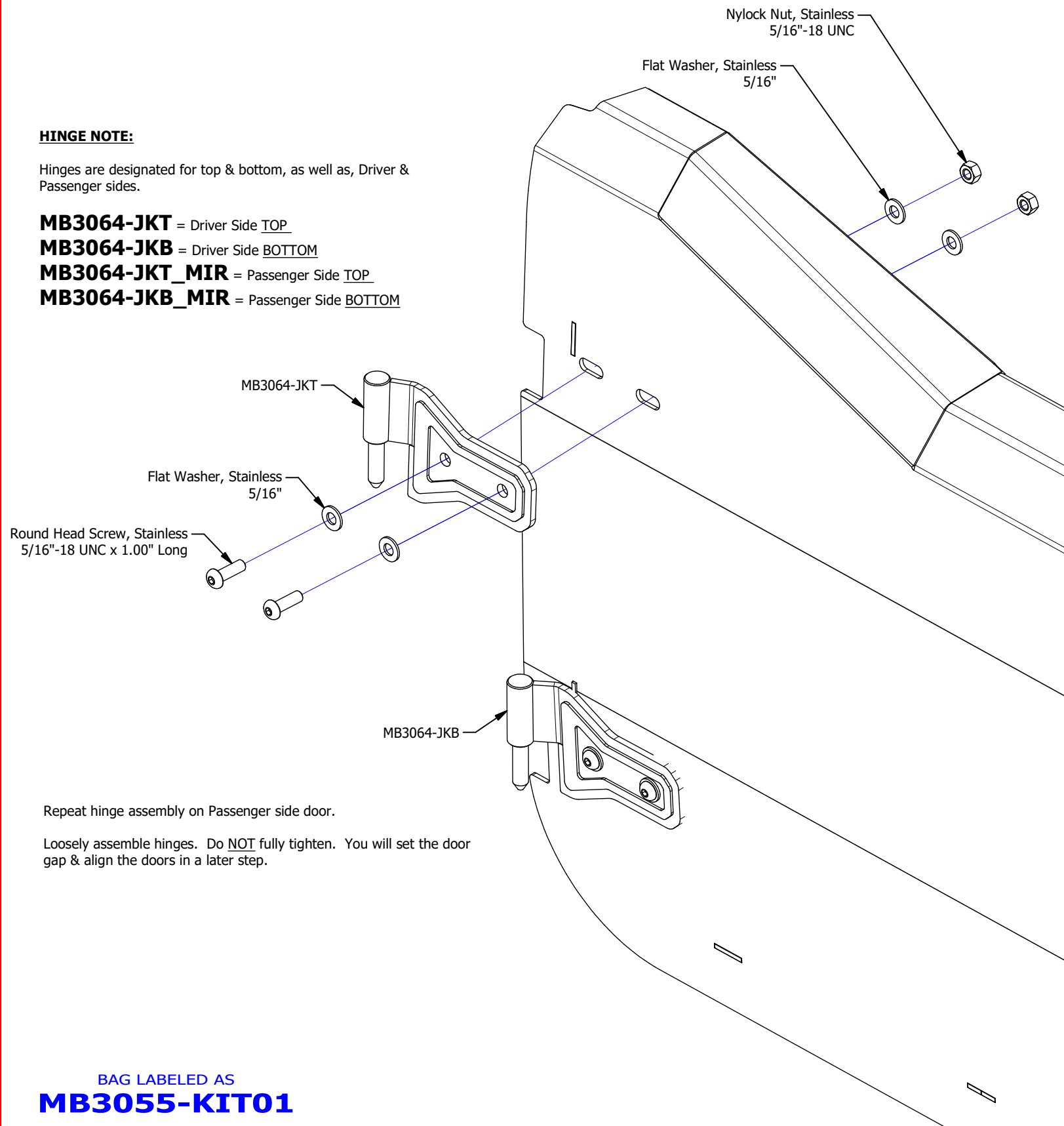
Hinges are designated for top & bottom, as well as, Driver & Passenger sides.

**MB3064-JKT** = Driver Side TOP

**MB3064-JKB** = Driver Side BOTTOM

**MB3064-JKT\_MIR** = Passenger Side TOP

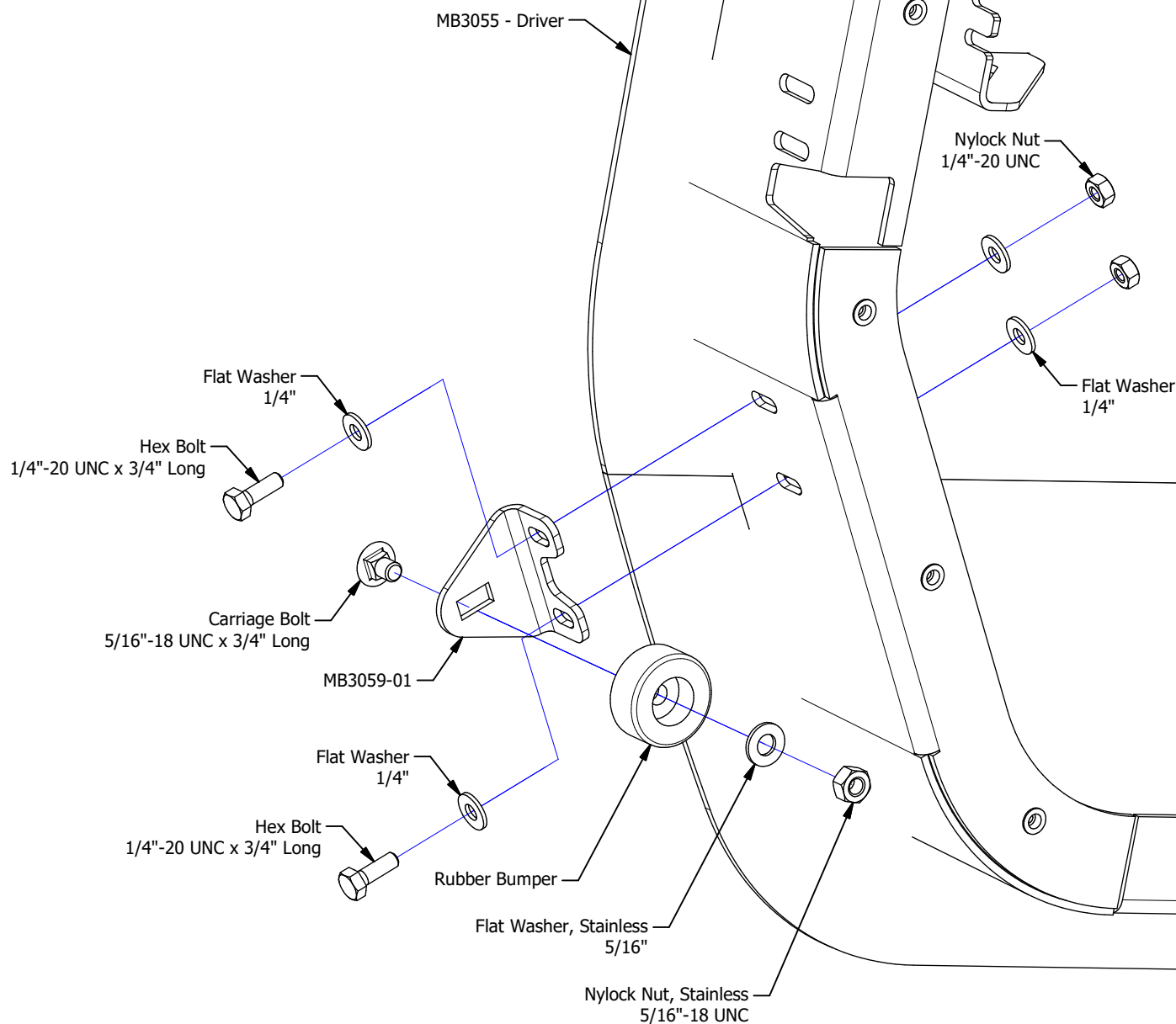
**MB3064-JKB\_MIR** = Passenger Side BOTTOM



BAG LABELED AS  
**MB3055-KIT01**

# MB3055 - Assembly Instructions Front Half Doors JK/JKU

## ASSEMBLY - STEP 2



Repeat rubber bumper assembly on Passenger side door.

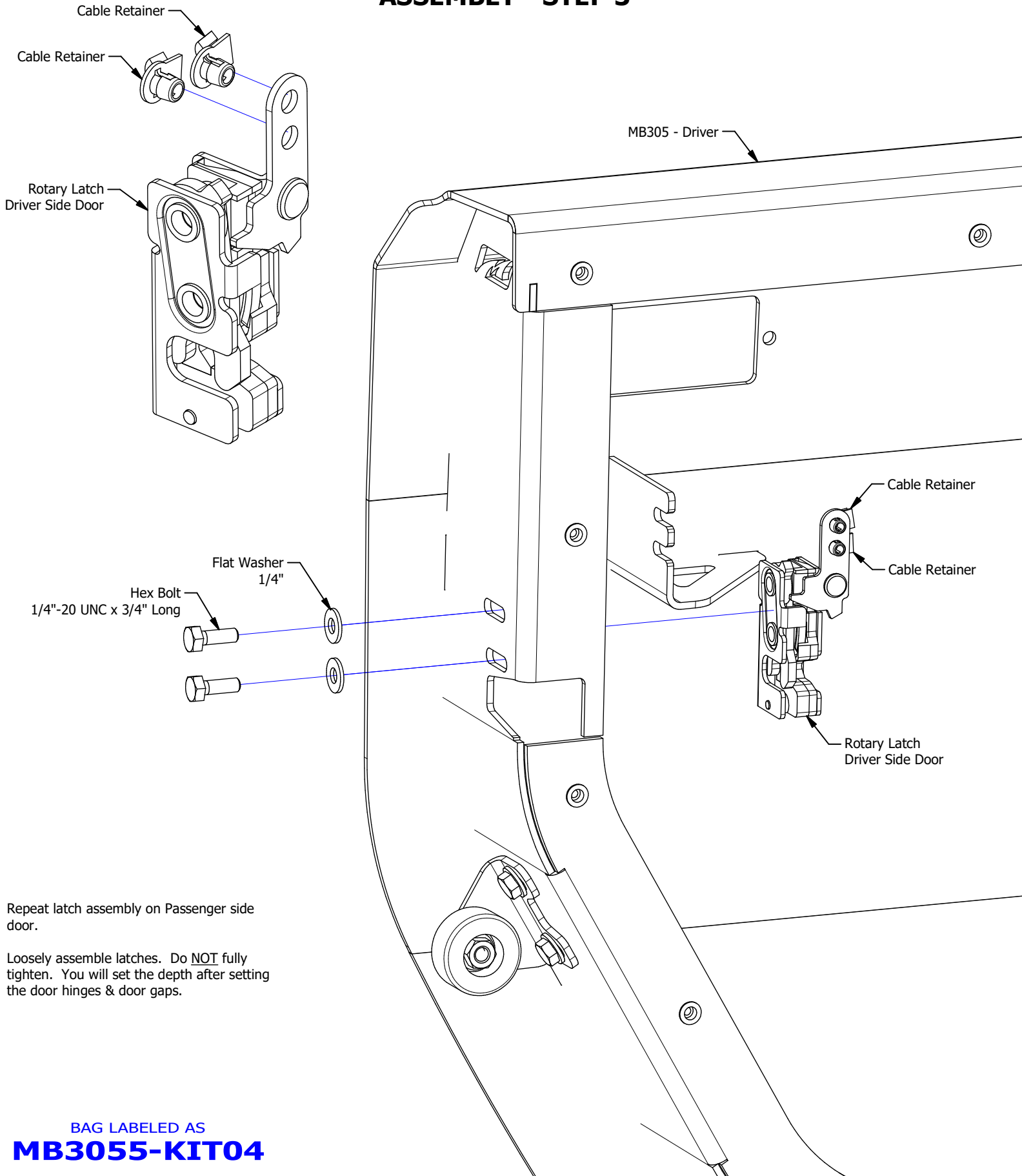
Tighten the fasteners for the rubber bumper.

Loosely assemble brackets. Do **NOT** fully tighten. You will set rubber bumper bracket depth after setting the door hinges & door gaps.

BAG LABELED AS  
**MB3055-KIT02**

# MB3055 - Assembly Instructions Front Half Doors JK/JKU

## ASSEMBLY - STEP 3

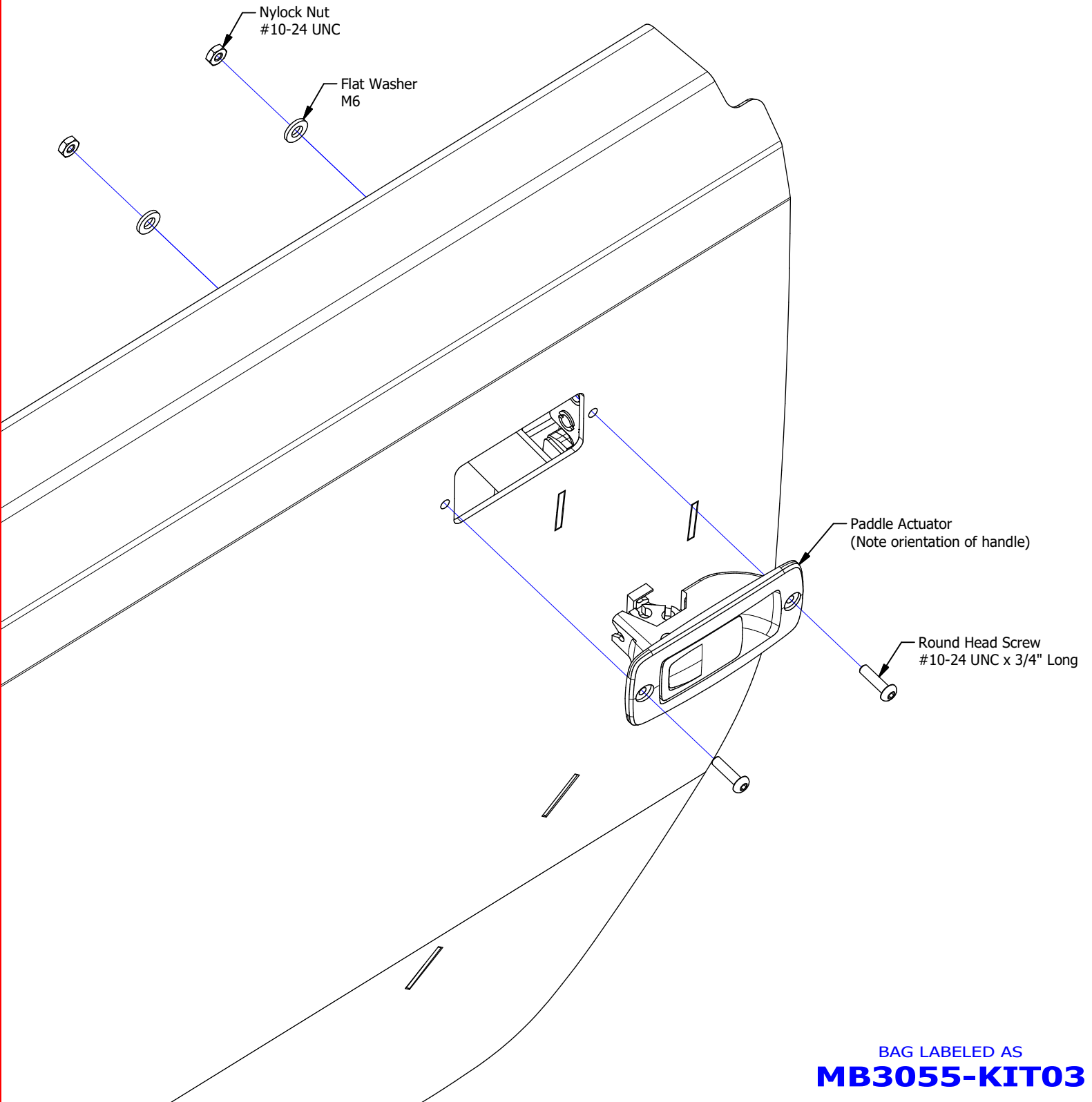


# MB3055 - Assembly Instructions Front Half Doors JK/JKU

## ASSEMBLY - STEP 4

Repeat exterior paddle actuator assembly on Passenger side door.

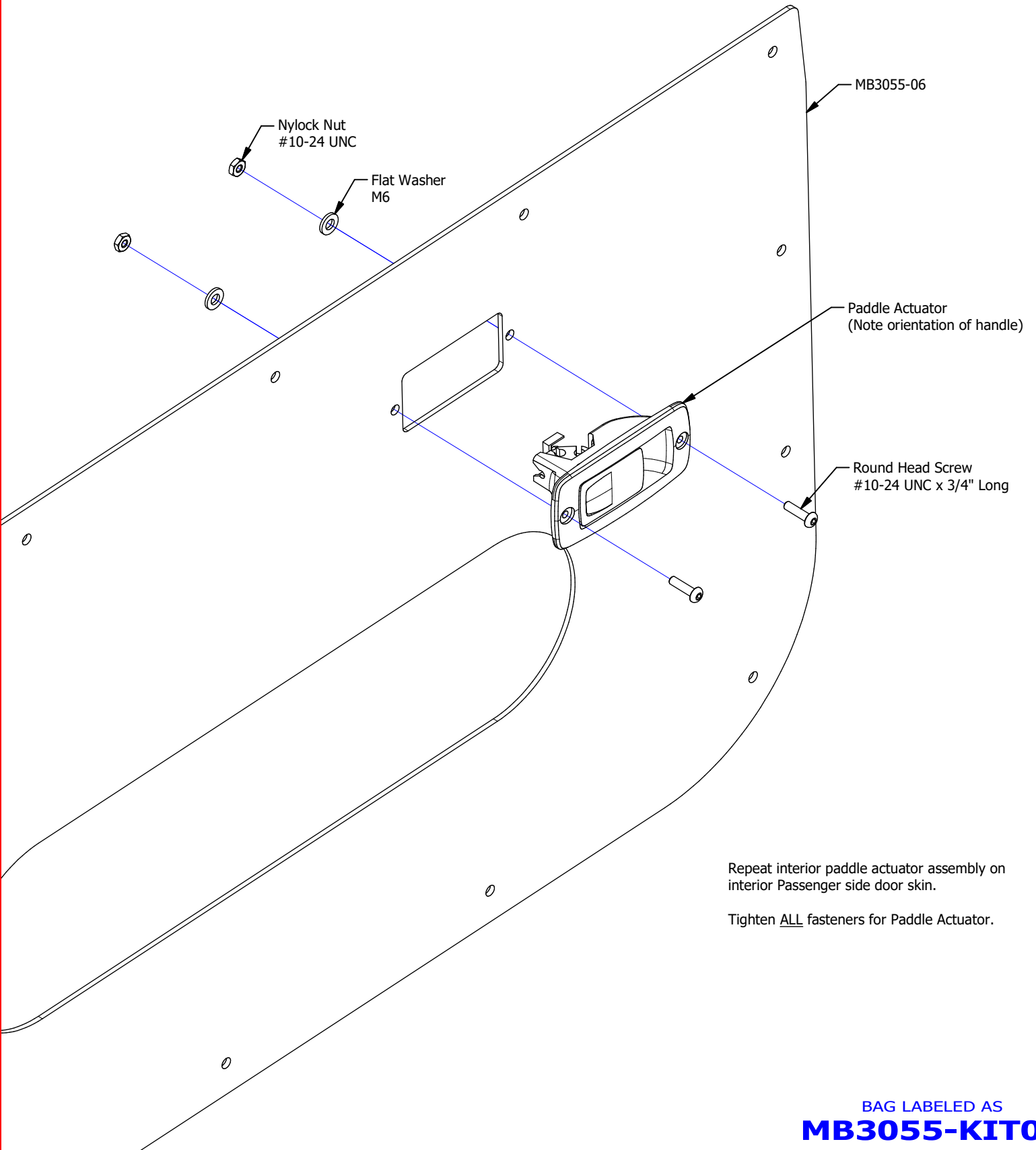
Tighten ALL fasteners for Paddle Actuator.



BAG LABELED AS  
**MB3055-KIT03**

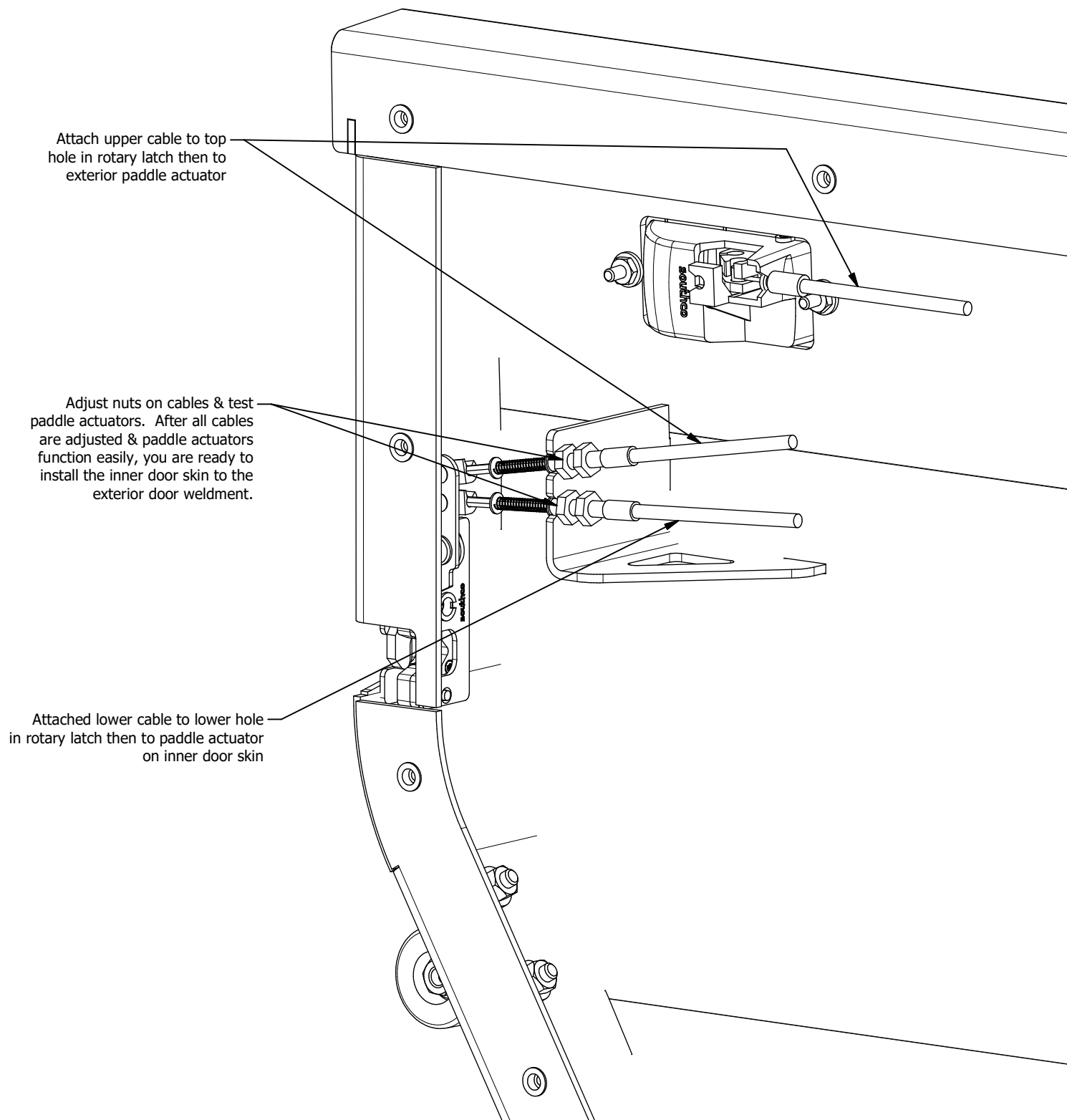
# MB3055 - Assembly Instructions Front Half Doors JK/JKU

## ASSEMBLY - STEP 5



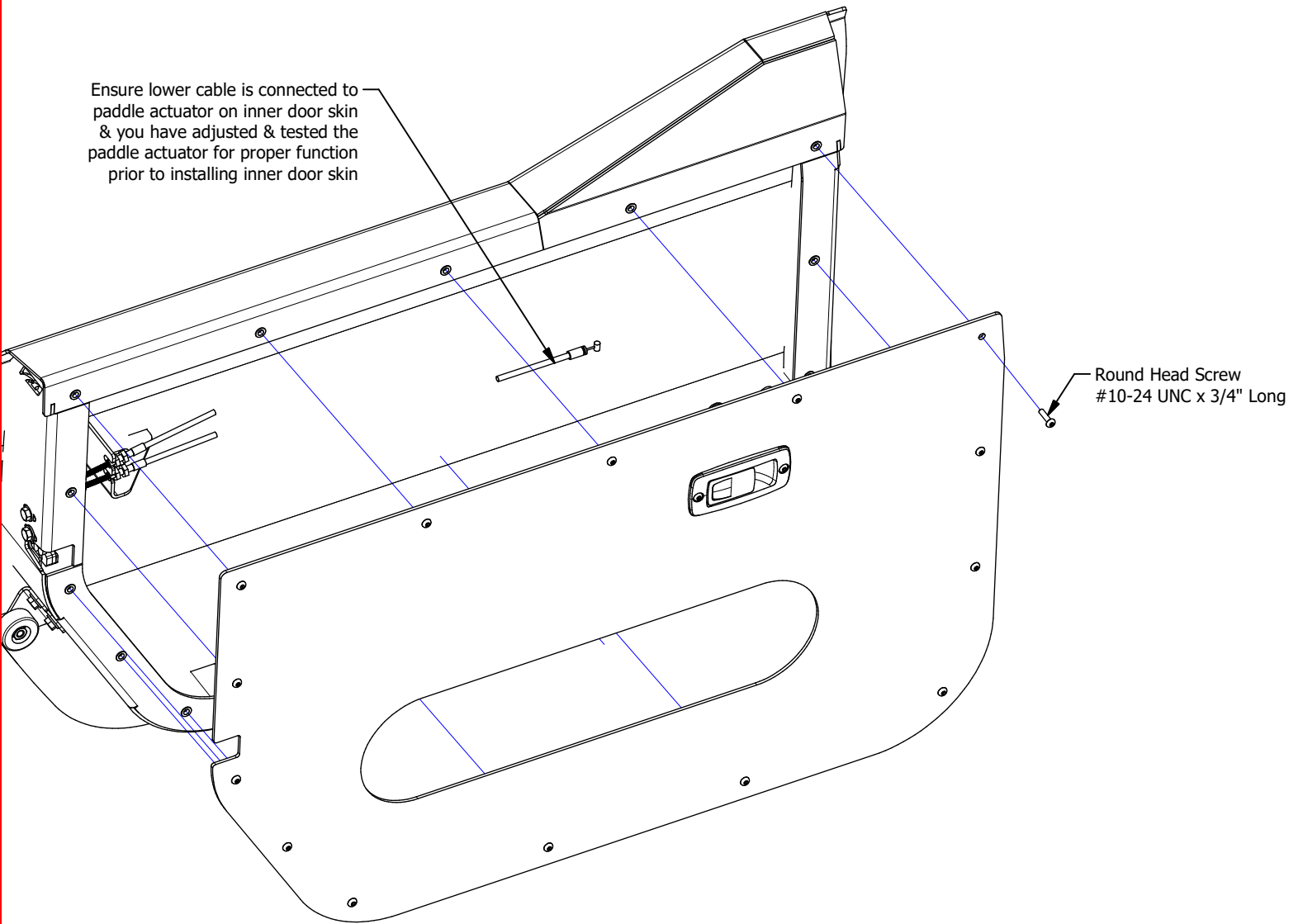
# MB3055 - Assembly Instructions Front Half Doors JK/JKU

## ASSEMBLY - STEP 6



# MB3055 - Assembly Instructions Front Half Doors JK/JKU

## ASSEMBLY - STEP 7



BAG LABELED AS  
**MB3055-KIT03**

## MB3055 - Assembly Instructions Front Half Doors JK/JKU

### ASSEMBLY - STEP 8

#### FINAL ASSEMBLY & ADJUSTMENT

1. Ensure hinge bolts are loose
2. Place assembled half door on vehicle door hinges
3. Close the door & view the door from the side of the vehicle
4. Adjust the door to ensure there is an even reveal & gaps from left to right & top to bottom
5. With the door remaining closed, tighten the hinges bolts
6. Open the door & adjust the rotary latch fasteners as well as the rubber bumper so that the door latches smoothly & the door sits flush with the outer body

