



INSTALLATION GUIDE: AWE F150 EXHAUST

For up-to-date fitment information, please visit the product page on [AWE-Tuning.com](https://www.awe-tuning.com).

THIS GUIDE IS INTENDED FOR THE FOLLOWING PART NUMBERS:

3015-32145 AWE 0FG Dual Side Exit Exhaust for '21+ Ford F-150 Regular Cab - 4.5" Chrome Silver Tips

3015-33145 AWE 0FG Dual Side Exit Exhaust for '21+ Ford F-150 Regular Cab - 4.5" Diamond Black Tips

Welcome to the AWE family, and congratulations on your purchase of the AWE Exhaust system for the Ford F-150.

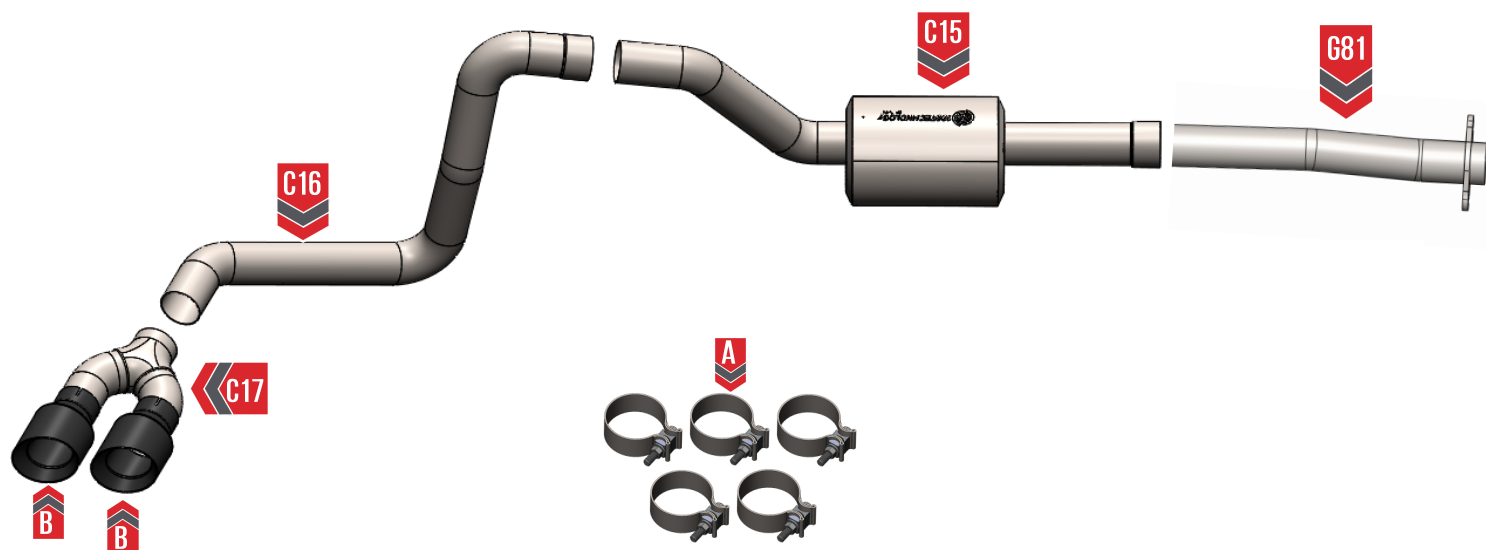
Exquisite build quality and craftsmanship, coupled with industry leading performance, distinguish this exhaust system from all others.

PARTS LIST (SIDE EXIT SYSTEMS)



INSPECT ALL PARTS PRIOR TO DISASSEMBLY OF VEHICLE; IF DAMAGED OR MISSING, PLEASE CONTACT THE PLACE OF PURCHASE IMMEDIATELY.

Symbol	Part Number	Description	QTY
	G81	Ford F-150 14G 122 Inlet	1
	C15	Ford F-150 13G HR Mid Section	1
	C16	Ford F-150 13G Single Outlet Axle Tube	1
	C17	Universal 3" Inlet Dual 3" Outlet Rear Merge Assembly	1
A	180300	AWE 3.0" Band Clamp, Stainless	5
B	61000455-ETCH	77mm Inlet, 114mm Outlet Chrome Silver Laser Etched Logo	2
	61000488-ETCH	77mm Inlet, 114mm Outlet Diamond Black Laser Etched Logo	2





NOTE: Always refer to the manufacturer's service manual for precise torque specifications on all OEM fasteners.



CAUTION: The exhaust may be **VERY HOT** — allow adequate time for the system to cool down before disassembly. Severe burns and injury will occur if skin comes into contact with a hot exhaust system.



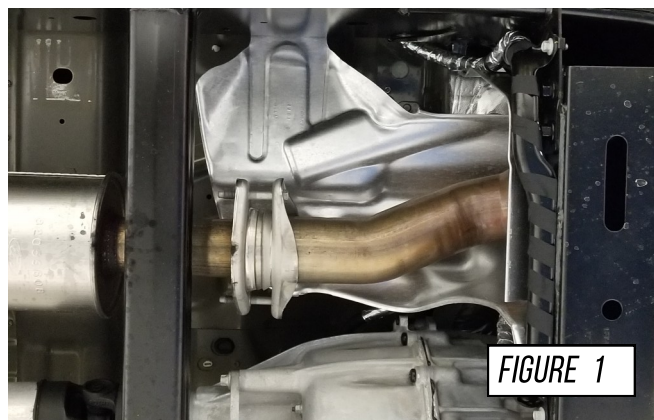
IF INSTALLING THE DUAL REAR EXHAUST SYSTEM, REMOVE SPARE TIRE FIRST



STEP 1

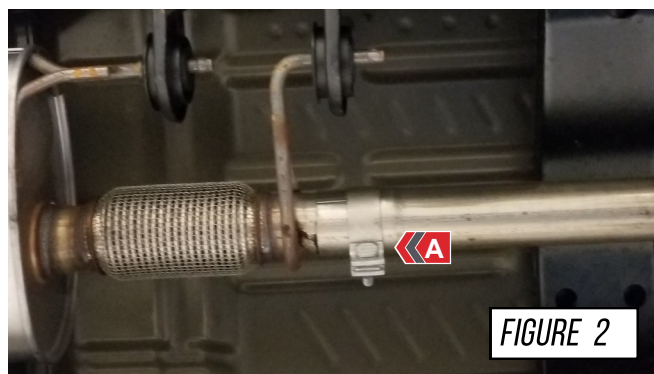
Start by loosening the front two flange bolts connecting the resonator section to the resonator inlet shown in **Figure 1**. These must move freely to detach the rest of the exhaust system.

If you will also be installing the performance resonator section, you can remove this hardware to be re-used when installing your AWE Exhaust system



STEP 2

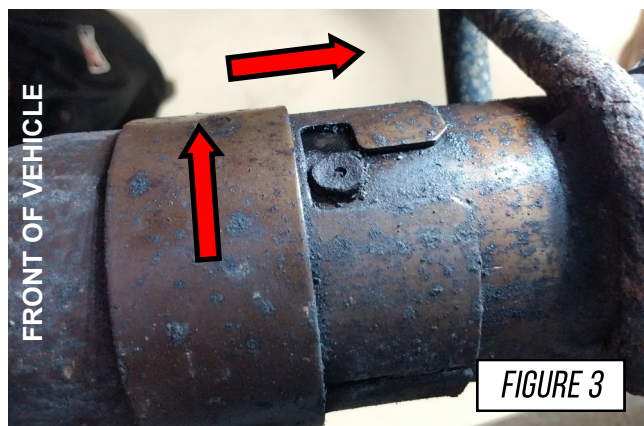
Loosen the factory clamp **(A)** holding the resonator section to the over axle tube shown in **Figure 2**



STEP 3

The resonator section and over axle section are held in place by the locking feature shown in **Figure 3**.

While facing the front of the vehicle, rotate the front resonator section clockwise to release the locking feature.

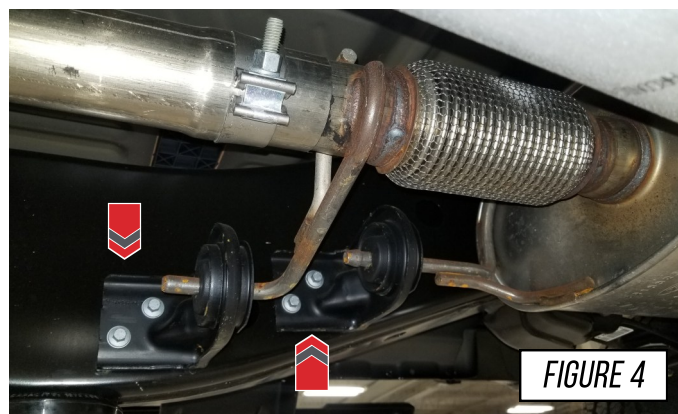


STEP 4

Remove the two OE front hanger brackets from the truck as shown in **Figure 4**. This will aid in removal of the OE system,

NOTE: Hanger Brackets vary between the different motors. But the instructions remain the same.

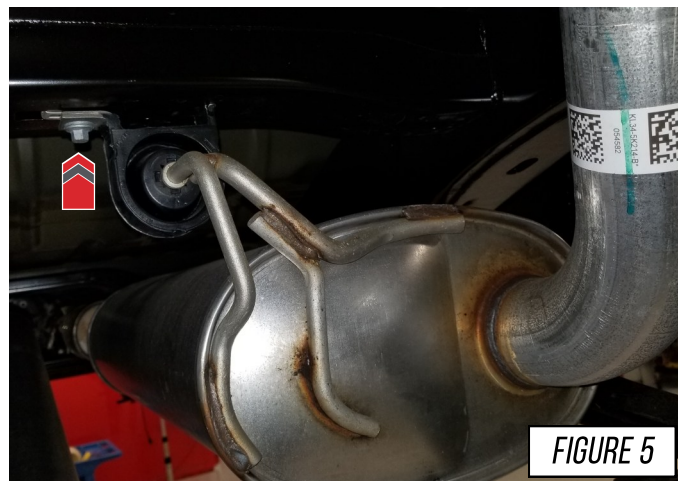
Note: Save the OE hardware, as it will be reused later.



STEP 5

Remove the first rear hanger, this will be reused in the AWE systems install, **Figure 5**

NOTE: The OEM exhaust system should be safely supported before disassembly



STEP 6

Remove the last rear hanger, this will be reused in the AWE systems install, **Figure 6**

Confirm that the front section is disconnected and remove the OEM exhaust system from the vehicle.

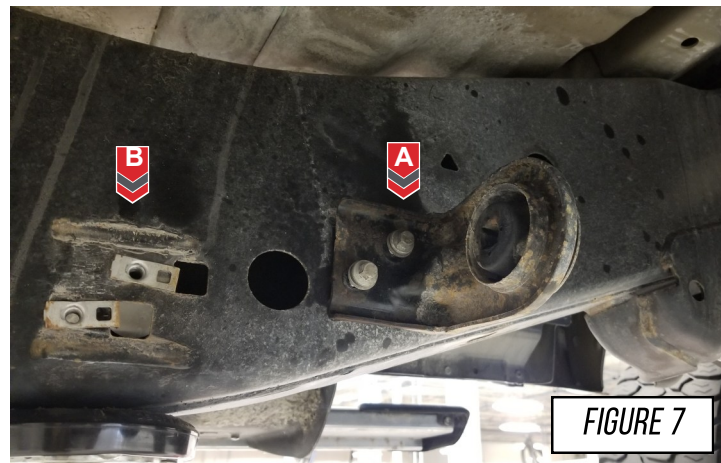


STEP 7

Reinstalling the factory exhaust hangers:

All of the exhaust hanger brackets on the v8 models can be reinstalled into their factory locations.

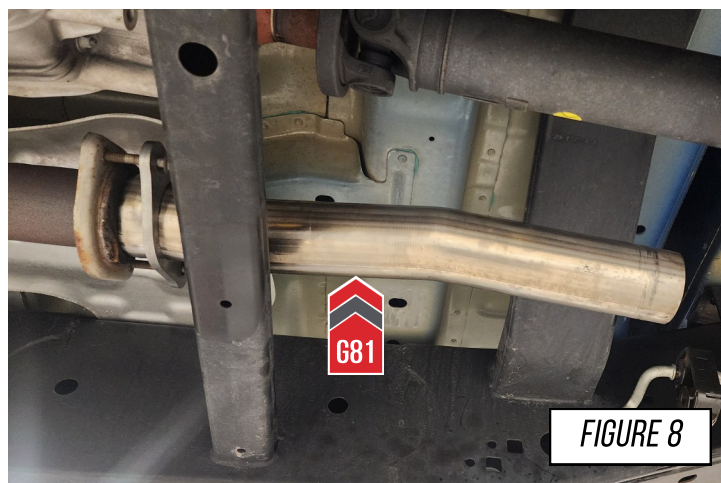
For the Eco boost models, both rear hangers, previously removed in steps 5 and 6 can be reinstalled. Reinstall the hanger bracket marked **(a)** in **Figure 7**. The front-most hanger bracket denoted **(b)** will not be re-used.



STEP 8

Begin by installing your AWE exhaust system by gathering your AWE inlet section (**G81**), as shown in **Figure 8**.

Reusing the OE hardware tighten the flange down on the ball flare, but leave them loose enough so you can rotate the tube.



STEP 9

It is crucial to install each section and Accu-Seal clamp correctly to prevent loose joints, exhaust leaks between the tubing connections, and rattles.

Arrow A in **Figure 9** shows the expanded pipe and the preinstalled Accu-Seal clamp being brought up to the corresponding pipe.

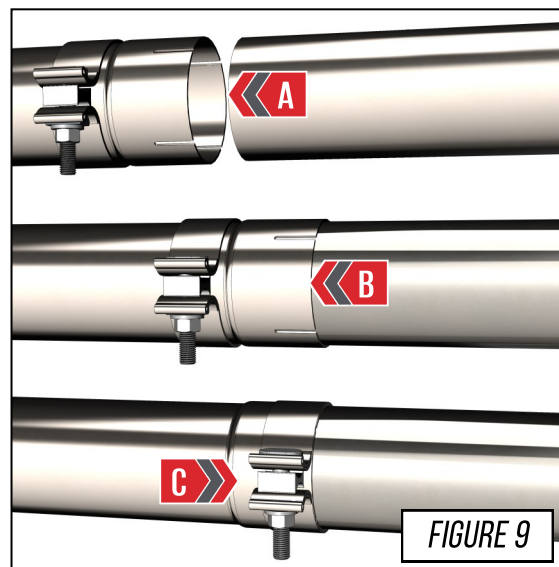
Arrow B in **Figure 9** shows the overlapping pipe installed correctly over the corresponding pipe.

Arrow C in **Figure 9** shows the Accu-Seal clamp being brought to the edge of the expanded pipe.

NOTES:



- **Do not** torque any Accu-Seal clamp until the entire exhaust has been installed and adjusted.
- Torque specification is a minimum of 60 ft/lbs



STEP 10

Install the AWE Mid Section (**C15**) by securing the hanger bars into their respective brackets, then slip one of the supplied 3.0" Band clamps over the inlet end and connect it to the outlet of the preceding tube. **Figure 10.**

Note: To ensure proper installation of your AWE mid section, rotate your AWE inlet tube (**G81**) so the hanger bar on your AWE mid section (**C15**) sits parallel to the OE hanger bar.



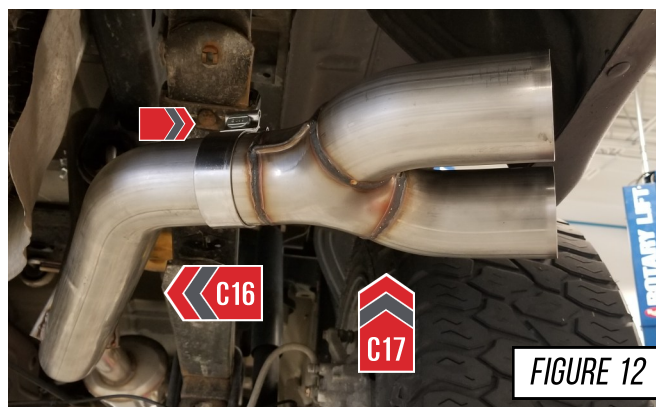
STEP 11

Continue by installing the single outlet axle-tube (part **C16**). Slide a 3.0" Band clamp over the inlet end of the axle tube (**A**) and connecting it to the outlet of the mid section. Secure the tube into its factory hanger (**B**). **Figure 11**



STEP 12

Install the single outlet rear merge (part **C17**) onto the axle tube (**C16**) using one of the supplied 3.0" Band clamps, as shown in **Figure 15**. Make sure to put the clamp on the tube before sliding the merge on.



STEP 13

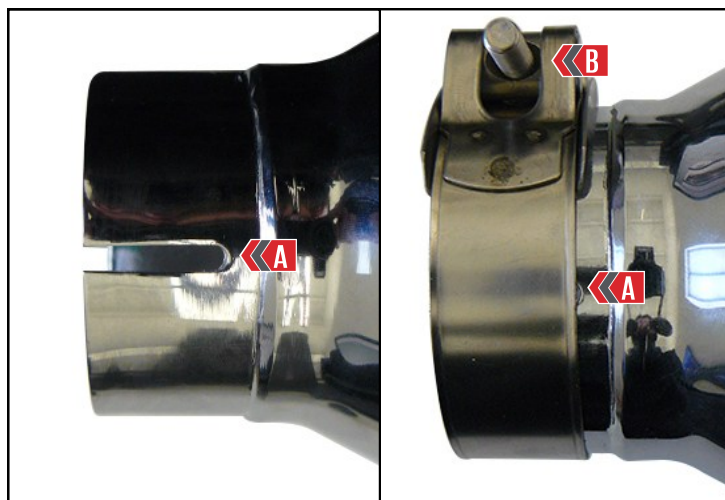
For the best tip fitment, align the barrel style tip clamp to cover *only* the slot, shown by **Arrow A**

Torque the tip clamp to 18 ft./lbs.



NOTES:

- It is required to apply anti-seize to the threads to prevent thread binding, shown by **Arrow B**
- It is okay to have the clamp extend beyond the edge of the tip inlet.



STEP 14

AWE exhaust system tip installation:

Install the tips using two of the supplied 3-inch band clamps to the same specifications outlined in **Step 9**.

Note: The tip angle will follow the contour of the truck bed, with the logo on top.

Make your final adjustments to the tips to ensure they are in a position you like. Once the desired positioning is achieved work from the front of the car to the back, tightening all the clamps fully and ensuring there is proper clearance of the chassis, and braces.

It is now recommended to drive the car to allow the exhaust to heat cycle after all clamps and tips are fully tightened.



At this point the exhaust will be **very hot**, allow to cool before work continues.

Check the tips for correct alignment, adjust as needed.



Don't forget to see the next page for any troubleshooting needs!

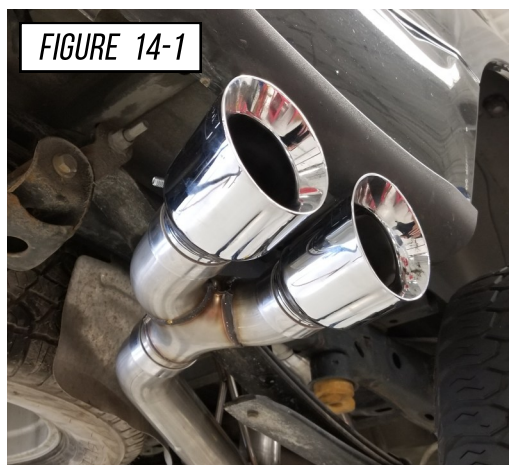


FIGURE 14-1

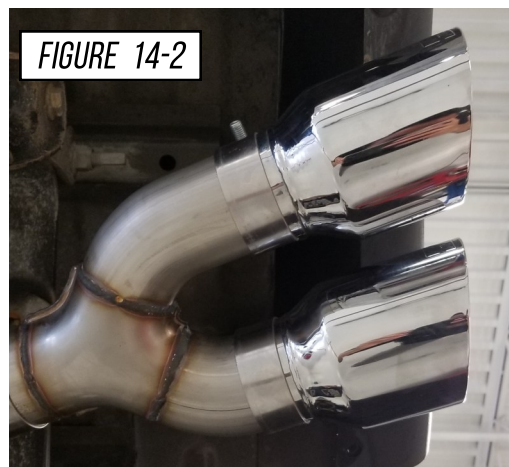


FIGURE 14-2

ENJOY!



TROUBLESHOOTING

Issue	Solution
Exhaust is not fitting correctly	Most fitment issues are due to improperly adjusted exhaust. This includes tip fitments and rattling due to chassis contact. Check out our fitment guide for more installation tips.
Wrong or missing parts	Double check the parts list for your system and compare them with what you received. Fill out our contact form, found below and let us know what parts you need.

CARE

Once installed properly, your AWE exhaust will provide years of trouble-free performance.

The exhaust volume and sound will settle with usage; 800-1000 miles is required to break-in new exhaust systems.

Also, please note that the rear **180Technology®** resonator has a small drain hole to allow condensation to escape. Water drops from this area are normal.

Periodic cleaning of exhaust tips is necessary to maintain proper finish, especially in areas prone to road salt and caustic deicing solutions. Use a mild soap and water solution or car wax to clean the finish. Avoid using abrasive polishes, as they can scratch the finish.

Any questions or comments,
please do not hesitate to contact us:

AWE
[CONTACT FORM](#)

WARRANTY

Up-to-date warranty information is found [HERE](#).