

## VERTICAL BRACKET INSTALLATION

### PROVIDED HARDWARE

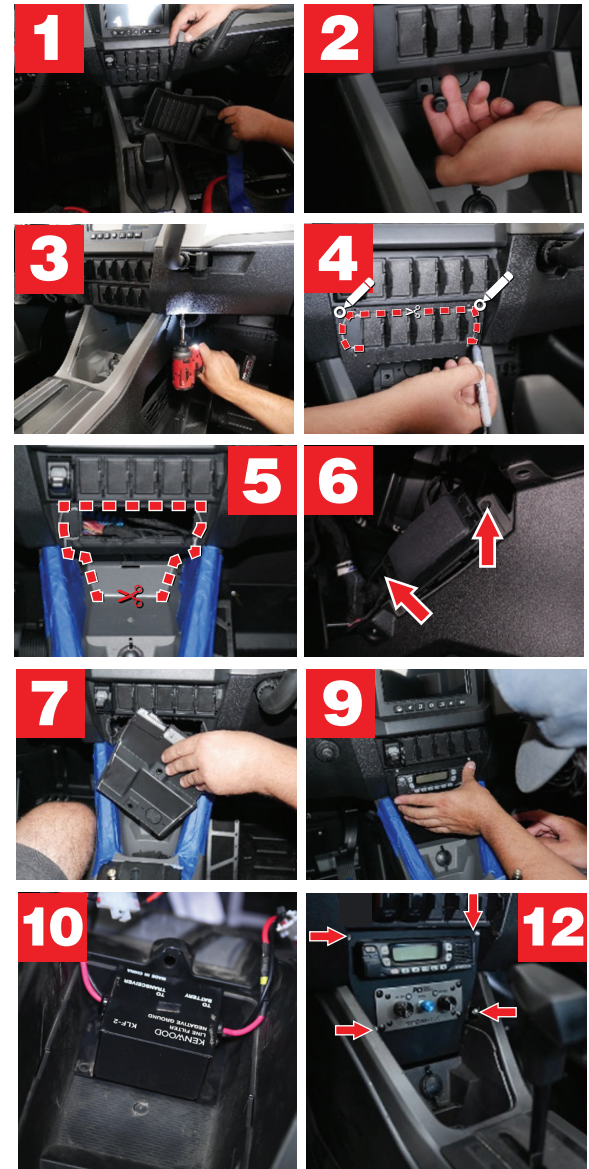
- (2) #10-24 x 5/8" SS Button Head Allen Screw
- (2) #10-24 Zinc Plated Nylock nut
- (2) #10 SS Washer
- (4) M4 x 16 SS Button Head Allen Screw
- (2) #10 x 5/8" SS Phillips Truss Head Sheet Metal Screw

### TOOLS NEEDED

- Oscillating multi tool with blade
- T30 driver
- 10mm socket
- Drill
- Silver Sharpie

### INSTRUCTIONS

1. Remove inner console rubber lining.
2. Remove automotive rivet from back wall of console storage pocket.
3. Remove (2) T30 Torx screws from underside of dash. One passenger side, one driver side. This will allow you to run cables down the center tunnel to the rear seats and battery.
4. Flip the radio/intercom bracket backwards to use as a template and hold to dash. Mark (2) top mounting screw locations. Outline the left and right-side outer edges where the radio inserts. This helps to establish the upper surface material that needs to be left for the bracket to attach to.
5. Draw two vertical lines straight down from the outer edge of the marking you just made for the radio. Outline the remainder of the storage pocket so you have a clear, cutting template.
6. Remove (2) 10mm hex head screws to release the driver side fuse box. Reach behind the dash and push the wiring harness away from the backside of the dash to prevent accidentally cutting wires in the following steps.
7. Using an oscillating multi tool to cut, start from the top and work your way down either side following your marked lines from step 5. Make sure to use a steady hand when cutting, remembering to be mindful of wiring behind the dash that you'll be cutting towards. **TIP:** We recommend prepping the console with blue painter's tape or other material to help protect the console from scratches.
8. Clean up the cut as needed once the outlined section is removed. The mounting bracket will cover all of the cut edges so don't worry about making it perfectly clean and straight.
9. Install the radio and intercom into the bracket using the hardware supplied with the intercom and radio. Place in the dash to check for proper fit to see if any additional material needs to be cut out of the dash panel.
10. If Installing a KLF-2 Line filter, we recommend mounting on the bottom tray.
11. Connect cables to the intercom and radio using the intercom instructions. Leave slack in the cables for service accessibility.
12. Bolt the bracket to the upper mounting surface with the supplied #10-24 x 5/8" hardware, use #10 x 5/8" Phillips screws to attach lower mounting tabs into the console side panels. The bottom edge of the bracket sits flush with the 12V cigar power panel.



562-427-8177



www.pciraceradios.com



6185 Phyllis Drive, Cypress, CA 90630

