

TURBO KIT

2017-2020 Can-am X3 R Models

PARTS LIST

- | | | | |
|---|--------------------|---|-------------------|
| 1 | TURBO ASSEMBLY | 2 | HOSE CLAMPS |
| 1 | WASTEGATE ACTUATOR | 3 | 5/16" HOSE CLAMP |
| × | 1 INTAKE TUBE | 1 | 5/8" HOSE CLAMP |
| 1 | FLANGE | 1 | 1" HOSE CLAMP |
| 1 | GASKET | 1 | 1.1/4" HOSE CLAMP |
| 1 | 3/4" BARB FITTING | | |
| 1 | 1/16" BARB FITTING | | |

PLEASE READ ALL DIRECTIONS BEFORE STARTING INSTALLATION.

×

96010011

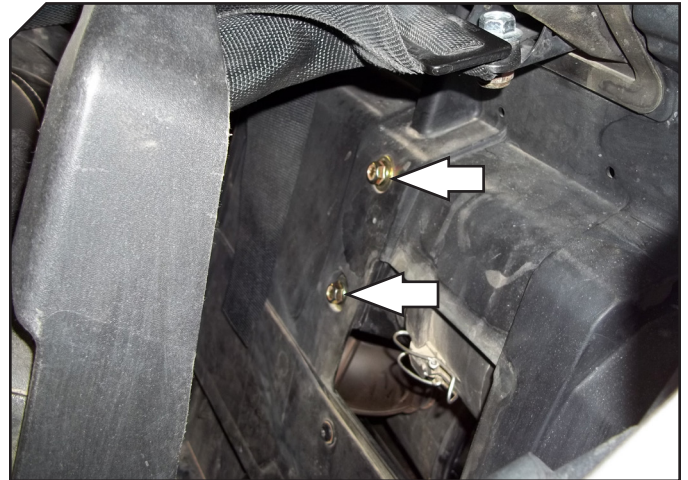
ATV
UTV
TRV
TRV

INSTALLATION INSTRUCTIONS

Refer to the service manual for detailed instructions on how to remove the stock turbo assembly.

You will need to remove:

- Seats
- Access panel behind seats
- Heat shields
- Intake tube
- Airbox
- Turbo assembly



REMOVE AIR BOX BOLTS

Remove the clutch cover intake hose.

Loosen the clamp for the airbox intake hose

Remove the airbox assembly

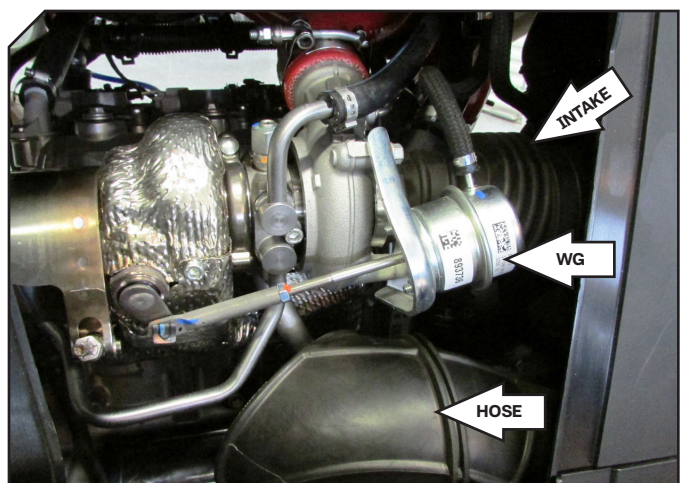


REMOVE AIR BOX

Remove the stock wastegate and bracket.
The stock bracket and hardware will be reused.

Remove the clutch cover intake hose.

Remove the intake tube from the turbo

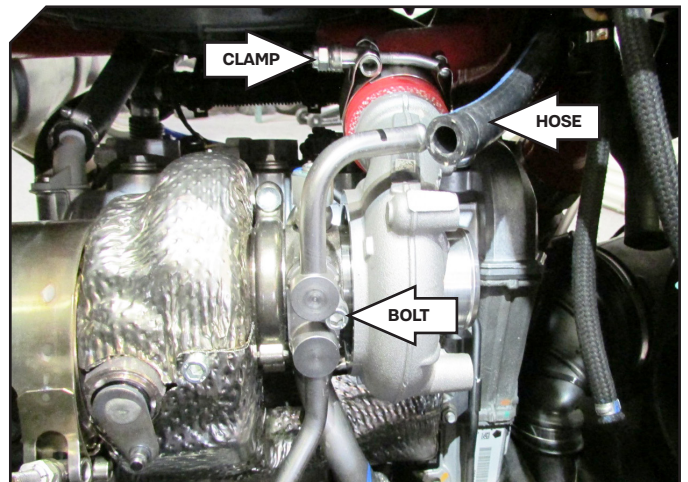


REMOVE WASTEGATE AND HOSES

INSTALLATION INSTRUCTIONS

Clamp the coolant hose to keep the coolant from draining. Remove the coolant line from the turbo by removing the bolt and nut retaining the line in place. You will need to cut the clamp to remove the hose. See the next pic for location of the nut.

Loosen the clamp for the charge tube.

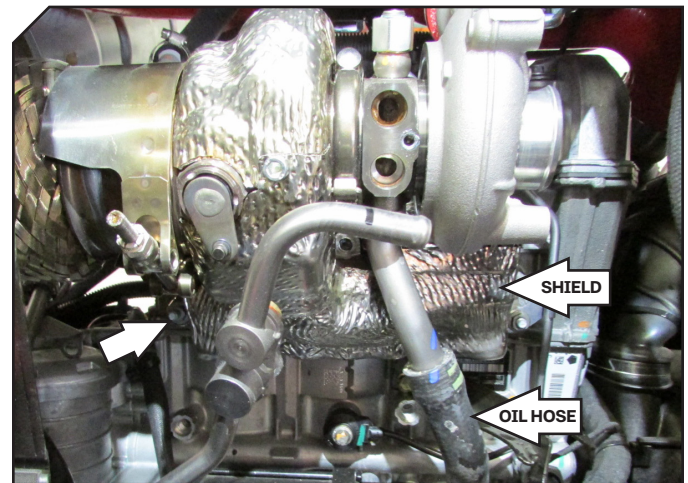


REMOVE COOLANT HOSE

Remove the oil drain hose
You will need to cut the clamp to remove the hose

The arrow on the left side of this pic indicates the location of the nut that needs to be removed for the coolant drain hose from previous step.

Remove the lower heat shield. There are 3 screws holding it in place.

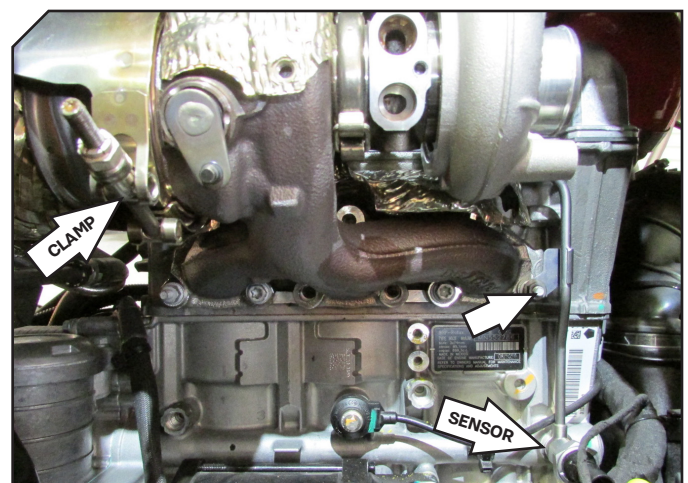


REMOVE OIL DRAIN HOSE

Remove the oil pressure sensor and hard oil line.

Loosen the V-band clamp holding the exhaust to the turbo.

Remove the 9 bolts holding the exhaust manifold in place and remove the stock turbo.



REMOVE STOCK TURBO

INSTALLATION INSTRUCTIONS

With the stock turbo removed, remove the stock heat shield and install on the new turbo.

Remove the oil drain tube from the stock turbo and install on the new turbo.

Using the supplied gasket install the new turbo onto the engine.



INSTALL HEAT SHIELD

Cut the stock airbox flange using a hacksaw or similar tool so that flange outlet is flush.



CUT AIRBOX FLANGE

Cut a section out of the flange.

This will allow you to squeeze the opening and remove the flange from the airbox housing.



REMOVE FLANGE

INSTALLATION INSTRUCTIONS

Install the supplied barb fitting into the Dynojet flange.

Install the Dynojet flange into the stock airbox paying attention to the position of the barb fitting.

You will need to use a soft mallet to get the flange to seat into the airbox.



INSTALL DYNOJET FLANGE

Install the Dynojet intake tube onto the turbo using the supplied clamp.

Install the airbox using the supplied clamp.

Connect the crankcase breather hose to the Dynojet tube using the supplied barb fitting and stock clamp.



INSTALL CRANKCASE HOSE

Use the stock bracket and hardware to mount the wastegate actuator to the turbo.

It is recommended to check the crack pressure of the wastegate which should be set to 10psi. Refer to this video if needed - <https://www.youtube.com/watch?v=5TEDJaH4NxU>

Reconnect all hoses and lines using the supplied clamps.

Check coolant and oil levels before starting vehicle.



INSTALL WASTEGATE ACTUATOR



PUSH THE LIMIT

2191 MENDENHALL DRIVE, NORTH LAS VEGAS, NV 89081 - 800-992-4993 - DYNOJET.COM

© 2019 DYNOJET RESEARCH ALL RIGHTS RESERVED