

Thank you for purchasing this Dynojet kit. This kit has been developed for a motorcycle which is set to the parameters listed at the right in the "Stage" description. If your motorcycle does not meet any of these parameters please check with Dynojet before installation. For technical assistance contact your Dynojet distributor or call Dynojet U.S.A. (800)-992-4993

2191 Mendenhall Dr. Suite 105  
North Las Vegas, NV 89031  
TEL: 702-399-1423  
FAX: 702-399-1431  
8am-5pm Pacific Time  
Monday through Friday

Website Address  
<http://www.dynojet.com>

The manufacturer and seller make no warranties express or implied which extend beyond the description of the goods contained herein. Any description or this product is for the purpose of identifying it and shall not be deemed to create an express warranty.



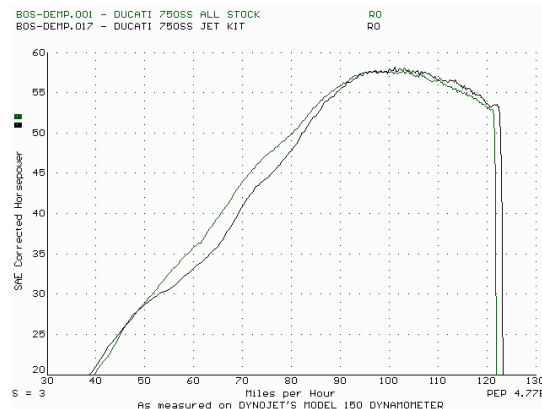
**7205.001**

U.S. Models Only

*1997-2001 Ducati M-750*

**Stage 2**

For mildly tuned machines using the stock airbox with lid removed and K&N filter. May also be used with a good aftermarket exhaust system K&N filter #DU-0900



*This graph shows a typical gain with a Dynojet jet kit.*

# WARNING

**NO SMOKING!  
NO OPEN FLAME!  
WHILE INSTALLING  
YOUR DYNOMETER KIT**

## Parts List

2	Main Jet	YJ144
2	Main Jet	YJ148
4	Main Jet O'ring	YJ-0
2	Fuel Needles	DNT729
2	Slide Springs	DSP007
2	E-Clips	DE0001
2	Adjusting Washers	DW0001
1	Plug Drill	DD #5/32
1	Screw	DS0001

## STAGE TWO INSTRUCTIONS

**DYNOJET**

**7205.001**

1. Remove the vacuum slides from carbs. Remove the stock needles and spacers, noting order of assembly (Fig. A).
2. Install Dynojet needles on groove #3 from the top. Use all stock spacers (Fig. A). Install the small Dynojet washers above the E-clip. After installing the slides in the carbs be sure to check slide movement manually.
3. Install the Dynojet slide springs (DSP007) in place of the stock slide springs, making sure springs are aligned properly. You may use the stock springs for slower throttle response.
4. Install the Dynojet main jets provided. The main jet is a press in jet located next to the large head Mikuni jet. There is a small retaining plate that secures the main jet in place. Remove the large head jets, retaining plates, and then the main jets. Swap the o-rings from the stock main jet to the Dynojet main jets and reinstall all pieces. Use the YJ144 main jets with the stock exhaust, or use YJ148 main jets with an aftermarket exhaust or slip-on with a high flowing baffle.
5. Locate the fuel mixture plug (Fig. B). If you see a screw head at Fig. B proceed to adjusting procedure. With the 5/32 drill bit provided drill through the plugs. **NOTE:** The mixture screw is directly underneath this plug, be ready to pull back the instant you break through. Use screw provided to secure and remove this plug. Carefully turn mixture screws clockwise until lightly seated, then back out 3.5 turns.

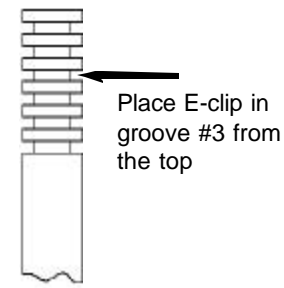


Fig. A

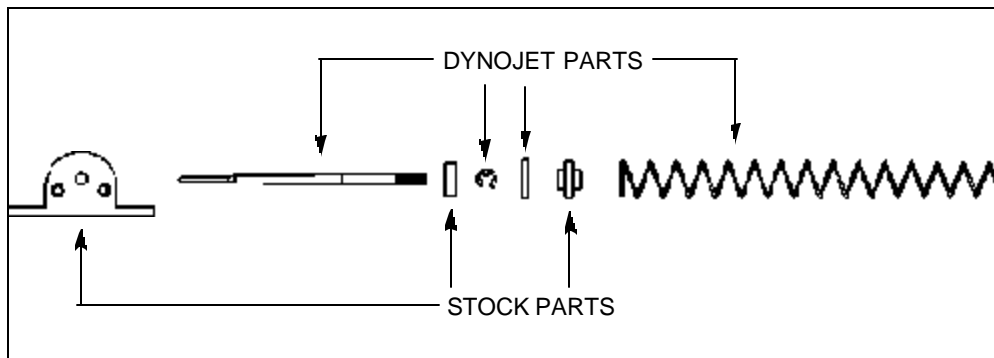


Fig. B

