

Thank you for purchasing this Dynojet kit. This kit has been developed for a motorcycle which is set to the parameters listed at the right in the "Stage" description. If your motorcycle does not meet any of these parameters please check with Dynojet before installation. For technical assistance contact your Dynojet distributor or call Dynojet U.S.A. (800)-992-4993

2191 Mendenhall Dr. Suite 105  
North Las Vegas, NV 89081  
TEL: 702-399-1423  
FAX: 702-399-1431  
8am-5pm Pacific Time  
Monday through Friday

Website Address  
<http://www.dynojet.com>

The manufacturer and seller make no warranties express or implied which extend beyond the description of the goods contained herein. Any description of this product is for the purpose of identifying it and shall not be deemed to create an express warranty.

# Dynojet

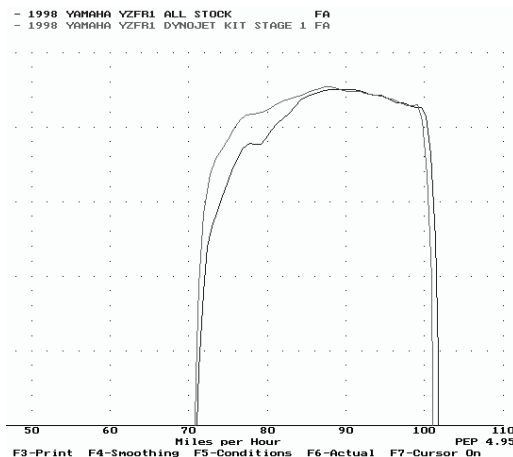
**4170.001**

U.S Models Only

2001-2005 Yamaha FZ1

## Stage 1

For mildly tuned machines using the stock airbox, with stock filter. May also be used with a good aftermarket slip-on exhaust system. This kit was designed with the EXUP valve retained.



*This graph shows a typical gain with a Dynojet jet kit.*

# WARNING

**NO SMOKING!  
NO OPEN FLAME!  
WHILE INSTALLING  
YOUR DYNOJET KIT**

## PARTSLIST

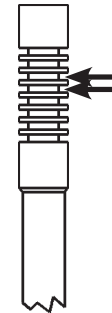
4	Main Jets	DJ118
4	Main Jets	DJ120
4	Main Jets	DJ122
4	Main Jets	DJ124
4	Main Jets	DJ126
4	Main Jets	DJ128
4	Fuel Needles	DNO761
4	Adjusting Washers	DW0001
4	E-Clips	DE0001
4	Needle Springs	DSP77
1	Screw	DS0001
1	Plug Drill	DD 5/32

## STAGE ONE INSTRUCTIONS

**Dynojet**

**4170.001**

1. Remove the vacuum slides from the carbs. Remove the stock needles and spacers, noting the order of assembly (Fig. A).
2. Install the Dynojet needles on groove #3 from the top for cylinders 1&4 and groove #4 from the top for cylinders 2&3. Use all stock spacers (Fig. A). The small Dynojet washers are for half step increments and do not have to be installed at this time. **NOTE: The DSP77 springs do not have to be used, they are supplied in case the stock springs are misplaced.** After installing the slides in the carbs be sure to check slide movement manually.
3. Remove the stock main jets and install the Dynojet main jets provided. If you are running the stock exhaust install the DJ122 main jets. If you are running an aftermarket slip-on exhaust with a high flowing baffle, use the DJ124 main jets. The extra main jets are for high altitude applications. Be sure that the jet you are changing is the main jet.
4. Locate the fuel mixture plug (Fig. B). If you see a screw head at Fig. B proceed to adjusting procedure. With the DD #5/32 drill bit provided carefully drill through the plugs. **NOTE: The mixture screw is directly underneath this plug, be ready to pull back on the drill the instant you break through.** Use screw provided to secure and remove this plug. Carefully turn mixture screws clockwise until lightly seated, then back out 2 turns.



Place E-clip in groove #3 from the top for Cylinders 1&4 and groove #4 from the top for Cylinder 2&3

Fig.A

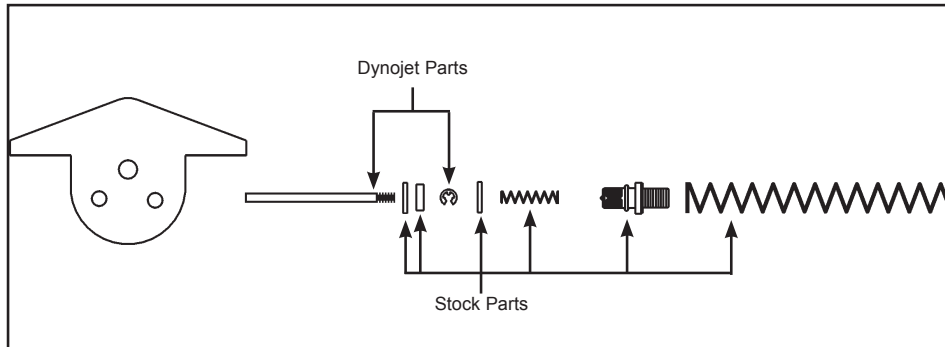


Fig. B Mixture Screw Plug

