

Thank you for purchasing this Dynojet kit. This kit has been developed for a motorcycle which is set to the parameters listed at the right in the "Stage" description. If your motorcycle does not meet any of these parameters, please check with Dynojet before installation. For technical assistance contact your Dynojet distributor or call Dynojet U.S.A. (800)-992-4993

2191 Mendenhall Dr. Suite 105  
North Las Vegas, NV 89081  
TEL: 702-399-1423  
FAX: 702-399-1431  
8am-5pm Pacific Time  
Monday through Friday

Website Address  
<http://www.dynojet.com>

The manufacturer and seller make no warranties express or implied which extend beyond the description of the goods contained herein. Any description of this product is for the purpose of identifying it and shall not be deemed to create an express warranty.

# Dynojet

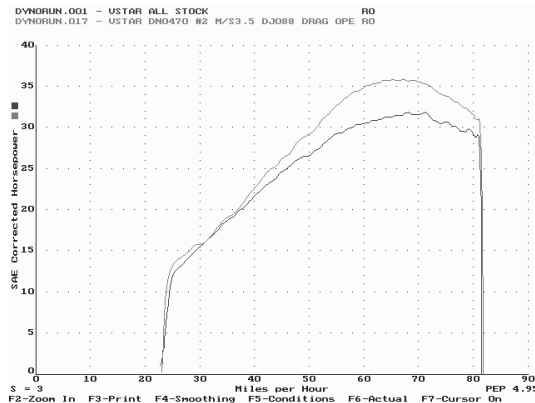
4166.001

U.S Models Only

2000-2007 Yamaha TT-R125 & L

## Stage 2

For mildly tuned machines using the stock airbox with the snorkel removed with the stock or K&N filter. May also be used with a good aftermarket exhaust system. K&N filter #YA-0085



*This graph shows a typical gain with a Dynojet jet kit.*

# WARNING

**NO SMOKING!  
NO OPEN FLAME!  
WHILE INSTALLING  
YOUR DYNOJET KIT**

## PARTSLIST

1	Main Jet	DJ088
1	Main Jet	DJ092
1	Main Jet	DJ096
1	Main Jet	DJ100
1	Main Jet	DJ104
1	Fuel Needle	DNO153
1	Adjusting Washer	DW0001
1	E-Clip	DE0001
1	Screw	DS0001
1	Plug Drill	DD 5/32

## STAGE TWO INSTRUCTIONS

Remove the intake snorkel from the top of the airbox.

**Dynojet**

**4166.001**

1. Unscrew the carb top. Disconnect the throttle cable from the slide. Remove the needle retainer (Fig.A). Remove the stock needle noting order of assembly (Fig. A).
2. Install the Dynojet needle with the E-clip in groove #3 from the top using all of the stock spacers (Fig. A). Install the Dynojet washer above the e-clip.
3. Remove the float bowl. Remove the stock main jet and replace with the Dynojet main jet provided. The main jet cup will ***NOT*** be reused (FIG. B). If you are running the stock exhaust use the DJ096 main jet. If you are running an aftermarket exhaust or slip-on with high flowing baffles, use the DJ100 main jet. Be sure that the jet you are changing is the main jet.
4. Locate the fuel mixture screw (Fig. B), if you see a screw head at Fig. B proceed to the adjusting procedure. With the DD #5/32 drill provided, carefully drill through the plug. ***NOTE: The mixture screw is directly underneath this plug, be ready to pull back on the drill the instant you break through.*** Use screw provided to secure and remove this plug. Carefully turn mixture screw in until lightly seated, then back out 3.5 full turns.

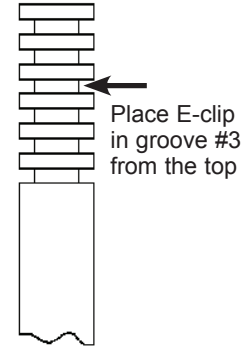


Fig. A

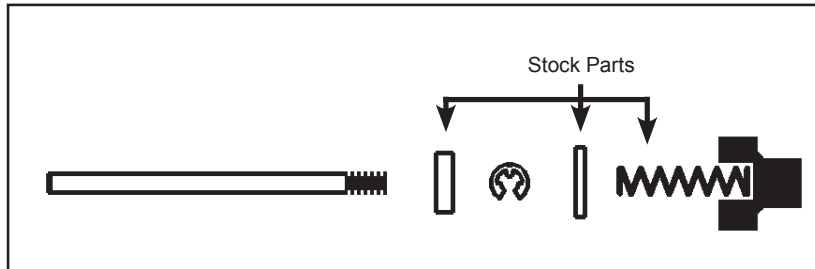


Fig. B

