



Air suspension Skid plate (Passenger side)

Here is the contents on the kit.

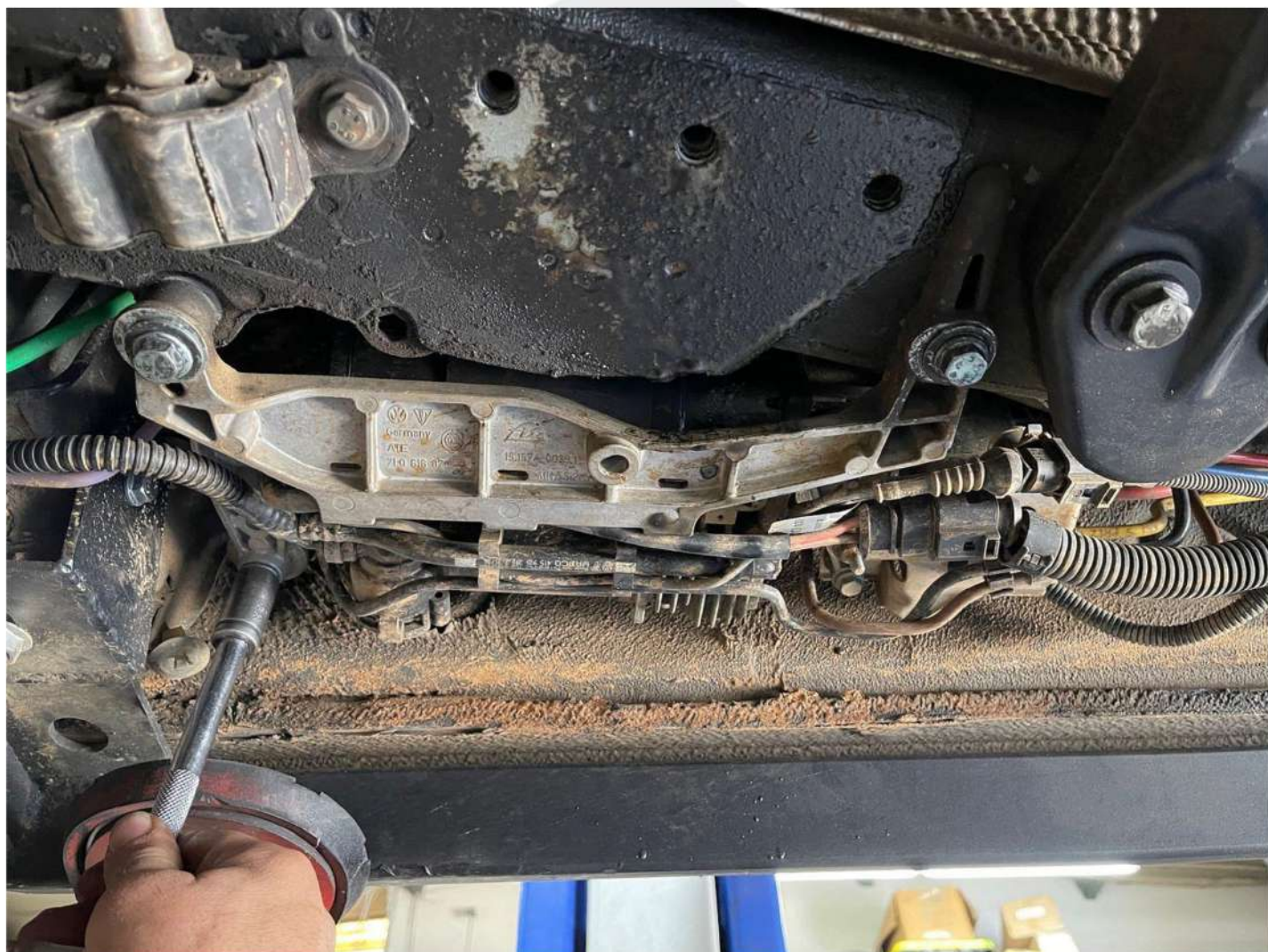
1 skid.

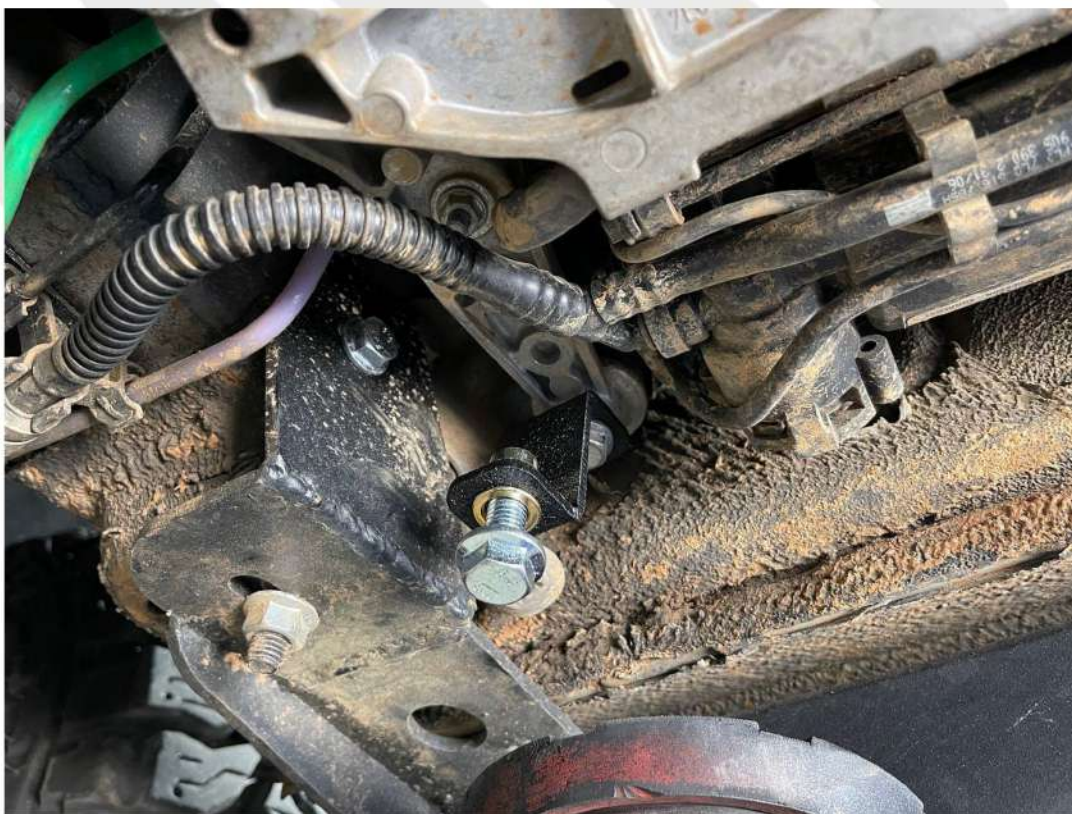
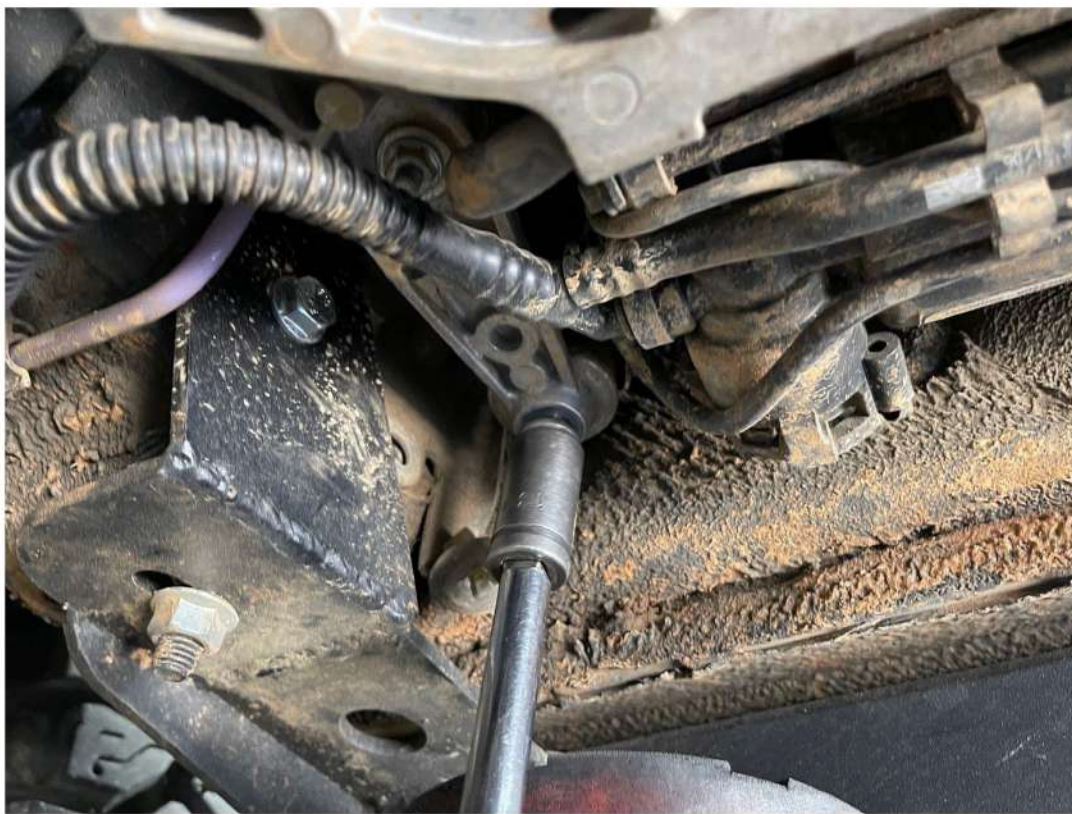
1 bag of hardware including 1 bracket and 1 bolt.





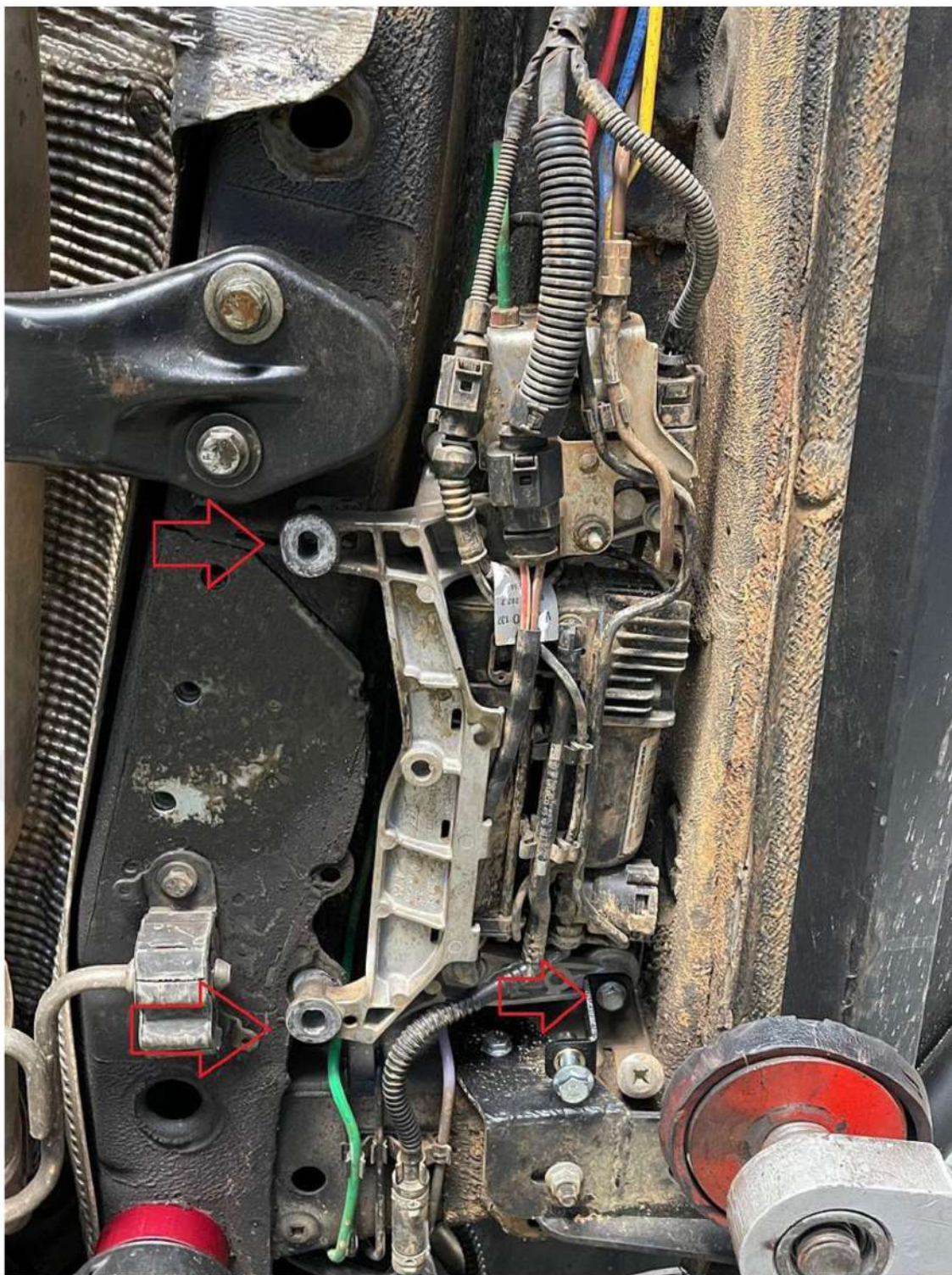
Remove this bolt first and install supplied bracket. If you install the bracket crooked you can still access the bracket later on with the shield installed with the hole we created in the skid. It is easier to install the shield with this bracket installed first so when you remove the other two mounting bolts the compressor doesn't move.





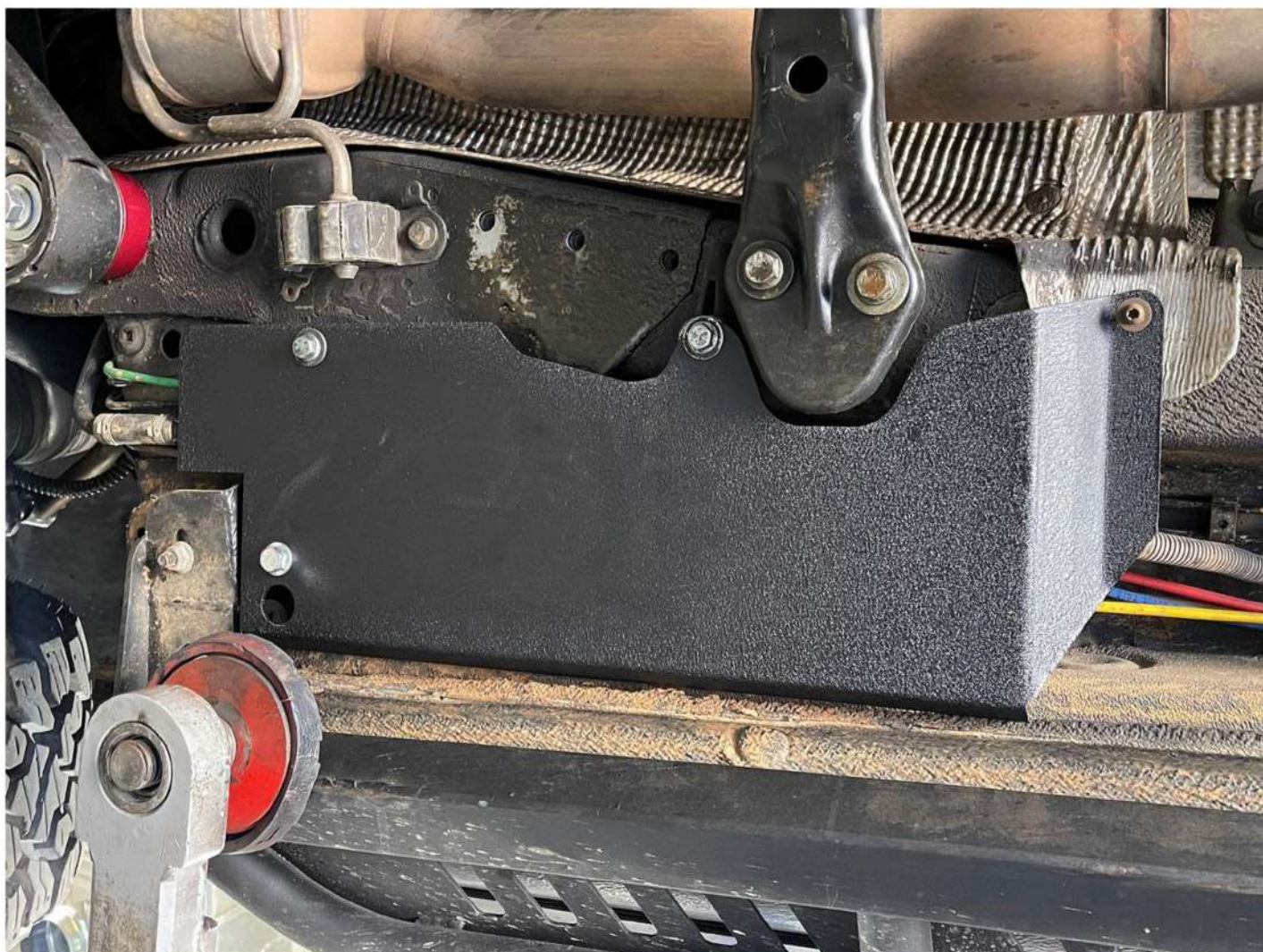


Remove the remaining two bolts.





Now Install the shield using the 2 13mm compressor bolts and the last bolt is the Screw used to hold the OEM plastic panel on the chassis.



***IF YOU HAVE ANY QUESTIONS, COMMENTS, OR CONCERNS RELATED TO YOUR PRODUCT
PLEASE CONTACT US!***