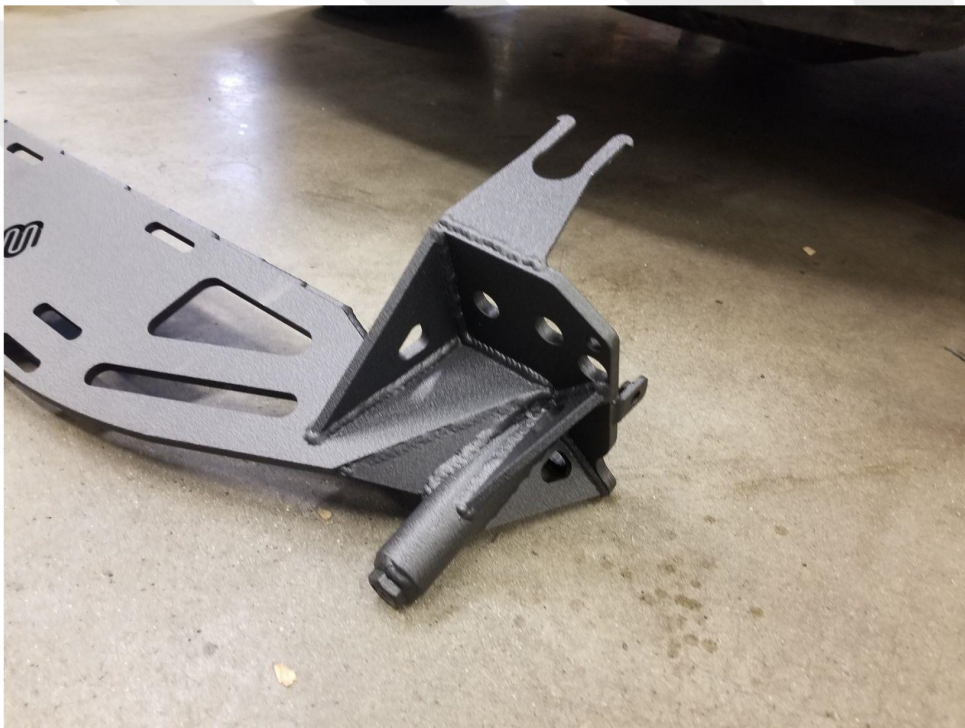




Gen 1 Winch mount installation guide





Remove 4 mounting bolts on each side (8 total) for the OEM bumper reinforcement.





Remove 4 mounting bolts on each side (8 total) for the OEM bumper reinforcement.



Remove OEM horn mounting bracket and it will be transferred onto the new hitch mount.



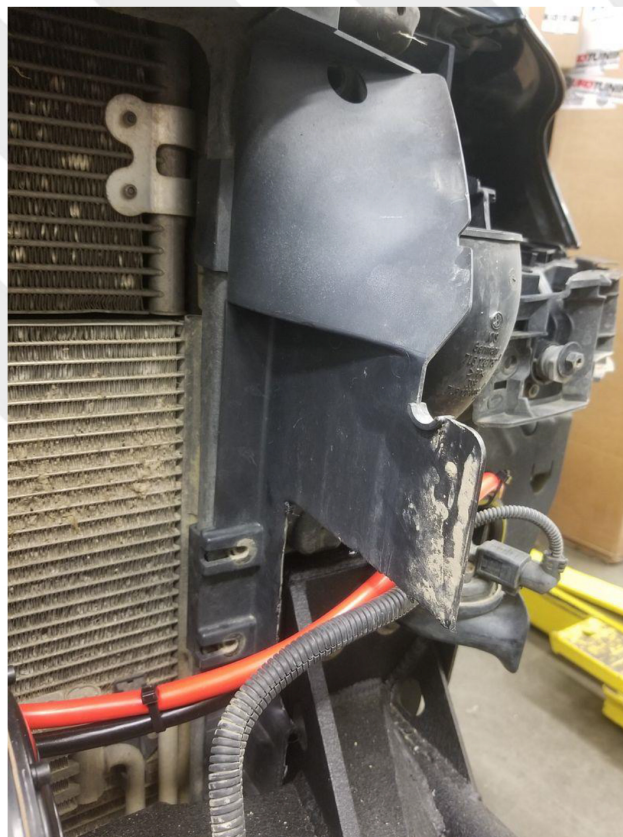
There is a clip on the radiator mount that is built into the OEM hitch mount. This needs to be unclipped from each side to remove the OEM bumper support. The new one will be installed the same way as the OEM. Using some lubricant on the radiator mount bushing will make reinstallation easier.







The radiator shroud plastics will need to be trimmed on each side.





The support bar that is attached to the bottom side in the center will need to be cut off to install the winch mount. See below in the center behind the plastic bumper frame.







Now install the winch mount.





Install your winch accordingly.

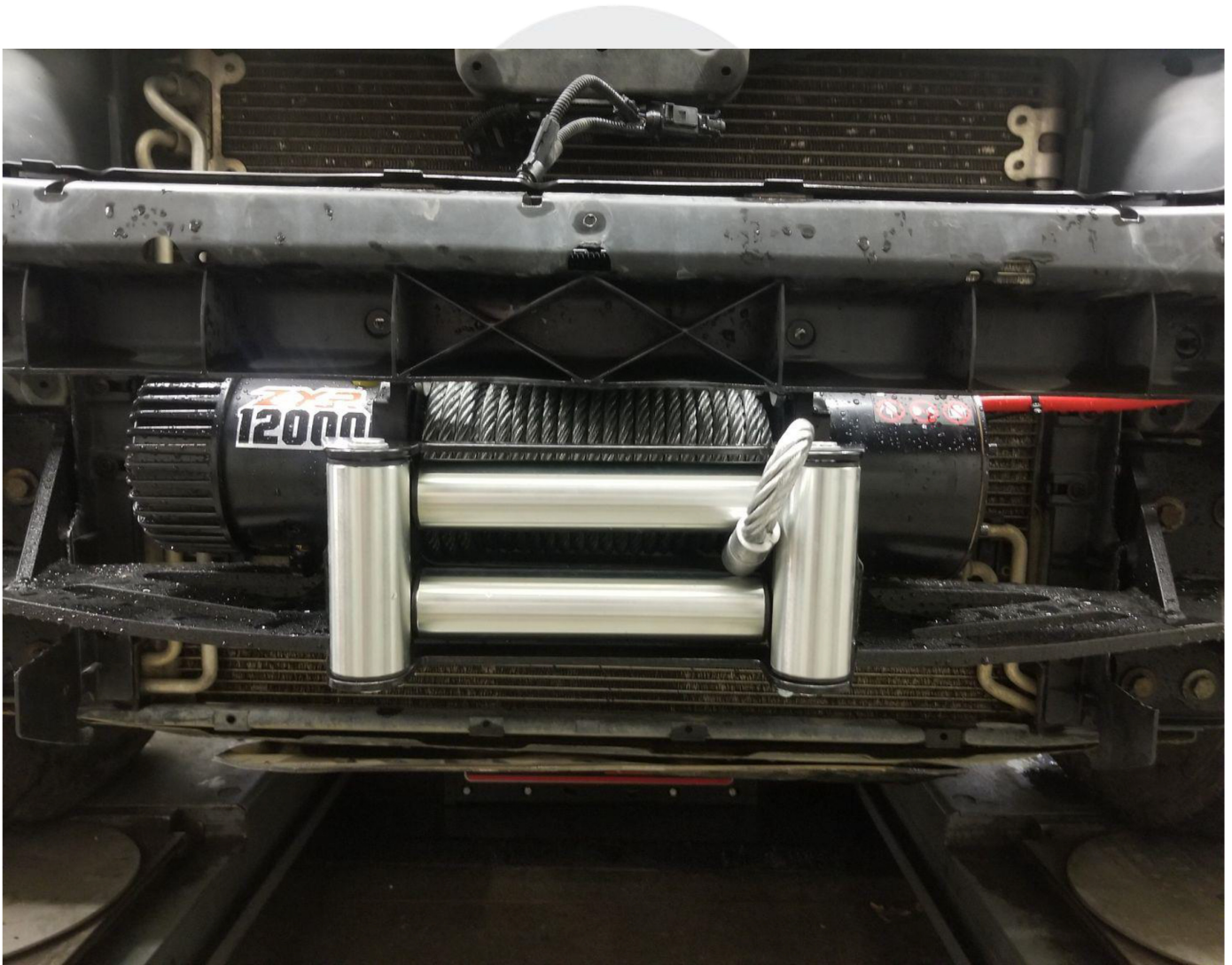








Your fairlead mount will be installed according to which brand winch you go with. We include a fairlead mount bracket with your order as well that is removable. Trim your bumper accordingly and install.





Seen below with optional recovery points and Eurowise tow eyelets.



***IF YOU HAVE ANY QUESTIONS, COMMENTS, OR CONCERNS RELATED TO YOUR PRODUCT
PLEASE CONTACT US!***